

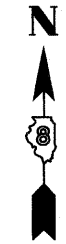
PART OF THE N.W. 1/4 OF SECTION 19, T6N, R10W, OF THE 3RD PM, MADISON COUNTY, ILLINOIS

CONST. @ CURVE C1
 PI STA. = 630+53.90
 Δ = 11° 39' 50" (LT)
 D = 4° 42' 42"
 R = 1,216.04'
 T = 124.21'
 L = 247.55'
 E = 6.33'
 P.C. STA. = 629+29.69
 P.T. STA. = 631+77.24

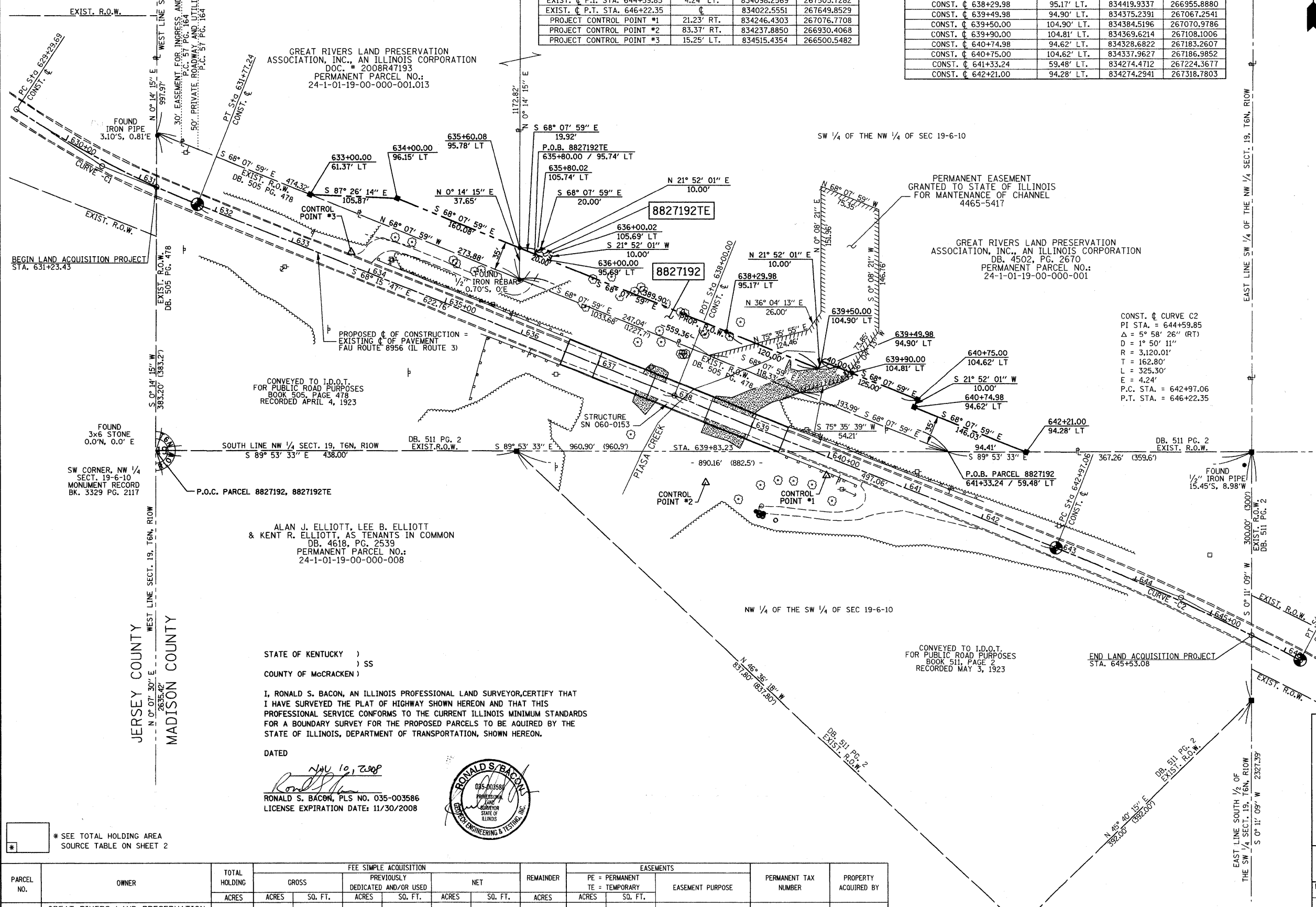
COORDINATES AND BEARINGS SHOWN HEREON ARE BASED ON SURVEY CONTROL DATA AS PROVIDED BY THE ILLINOIS DEPARTMENT OF TRANSPORTATION, PROJECT COORDINATES ARE ON GROUND DATA.

CENTERLINE COORDINATE TABLE			
STATION	OFFSET	NORTH	EAST
EXIST. @ P.C. STA. 629+29.69	0	834687.6417	266095.2549
EXIST. @ P.I. STA. 630+53.90	6.33' RT.	834619.2676	266198.9462
EXIST. @ P.T. STA. 631+77.24	0	834573.2686	266314.3195
EXIST. @ P.O.T. STA. 638+00.00	0	834342.6323	266892.7939
EXIST. @ P.C. STA. 642+97.06	0	834158.5482	267354.5076
EXIST. @ P.I. STA. 644+59.85	4.24' LT.	834098.2569	267505.7282
EXIST. @ P.T. STA. 646+22.35	0	834022.5551	267649.8529
PROJECT CONTROL POINT #1	21.23' RT.	834246.4303	267076.7708
PROJECT CONTROL POINT #2	83.37' RT.	834237.8850	266930.4068
PROJECT CONTROL POINT #3	15.25' LT.	834515.4354	266500.5482

COORDINATE TABLE			
STATION	OFFSET	NORTH	EAST
CONST. @ 633+00.00	61.37' LT.	834584.8154	266451.0786
CONST. @ 634+00.00	96.15' LT.	834580.0812	266556.8461
CONST. @ 636+00.00	95.78' LT.	834520.4593	266705.4067
CONST. @ 635+73.88	60.75' LT.	834482.8085	266705.2506
CONST. @ 635+80.00	95.74' LT.	834513.0392	266723.8956
CONST. @ 635+80.02	105.74' LT.	834522.3197	266727.6201
CONST. @ 636+00.00	95.69' LT.	834505.5901	266742.4566
CONST. @ 636+00.02	105.69' LT.	834514.8706	266746.1811
CONST. @ 638+29.98	95.17' LT.	834419.9337	266955.8880
CONST. @ 639+49.98	94.90' LT.	834375.2391	267067.2541
CONST. @ 639+50.00	104.90' LT.	834384.5196	267070.9786
CONST. @ 639+90.00	104.81' LT.	834369.6214	267108.1006
CONST. @ 640+74.98	94.62' LT.	834328.6822	267183.2607
CONST. @ 640+75.00	104.62' LT.	834337.9627	267186.9852
CONST. @ 641+33.24	59.48' LT.	834274.4712	267224.3677
CONST. @ 642+21.00	94.28' LT.	834274.2941	267318.7803



SPACE RESERVED FOR RECORDING OFFICER



STATE OF KENTUCKY)
) SS
 COUNTY OF McCRACKEN)

I, RONALD S. BACON, AN ILLINOIS PROFESSIONAL LAND SURVEYOR, CERTIFY THAT I HAVE SURVEYED THE PLAT OF HIGHWAY SHOWN HEREON AND THAT THIS PROFESSIONAL SERVICE CONFORMS TO THE CURRENT ILLINOIS MINIMUM STANDARDS FOR A BOUNDARY SURVEY FOR THE PROPOSED PARCELS TO BE ACQUIRED BY THE STATE OF ILLINOIS, DEPARTMENT OF TRANSPORTATION, SHOWN HEREON.

DATED Nov 10, 2008
 RONALD S. BACON, PLS NO. 035-003586
 LICENSE EXPIRATION DATE: 11/30/2008



GEOTECH
 ENGINEERING & TESTING, INC.

500 South 17th Street
 Paducah, Kentucky 42003
 Phone: (270) 443-1995
 Fax: (270) 443-1804
 REGISTRATION NO. 184-003258

ILLINOIS DEPARTMENT OF TRANSPORTATION
PLAT OF HIGHWAYS

FAU ROUTE 8956 (IL ROUTE 3)
 SECTION 59BR-1
 MADISON COUNTY
 JOB NO. R-98-027-08

STATION 631+23.43 TO STATION 645+53.08
 SCALE: 1" = 60'

ILLINOIS DEPARTMENT OF TRANSPORTATION
 DIVISION OF HIGHWAYS/REGION 5/DISTRICT 8
 1102 EASTPORT PLAZA DRIVE
 COLLINSVILLE, ILLINOIS 62234-6198

F.A.U. RTE.	SECTION	COUNTY	TOTAL SHEETS	SHEET NO.
8956	59BR-1	MADISON	75	24

CONTRACT NO. 76B18
 ILLINOIS FED. AID PROJECT

PARCEL NO.	OWNER	TOTAL HOLDING ACRES	FEE SIMPLE ACQUISITION				REMAINDER ACRES	EASEMENTS		PERMANENT TAX NUMBER	PROPERTY ACQUIRED BY		
			GROSS ACRES	SO. FT.	PREVIOUSLY DEDICATED AND/OR USED ACRES	SO. FT.		NET ACRES	SO. FT.			PE = PERMANENT ACRES	TE = TEMPORARY ACRES
8827192	GREAT RIVERS LAND PRESERVATION ASSOCIATION, INC. TITLE REPORT NO. 18-2007MA-4173.0	74.66	0.6932	30,199	0	0	0.6932	30,199	73.9668	TE 0.0046	TE 200	DRIVEWAY CONSTRUCTION	24-1-01-19-00-000-001 24-1-01-19-00-000-001.013