

STATE OF ILLINOIS  
DEPARTMENT OF TRANSPORTATION

NORTH EDGE OF SHOULDER

| Location                           | Station   | Offset | Theoretical Grade Elevations |
|------------------------------------|-----------|--------|------------------------------|
| West End of West Approach Pavement | 636+52.50 | -20.00 | 443.75                       |
| A1                                 | 636+62.50 | -20.00 | 443.80                       |
| A2                                 | 636+72.50 | -20.00 | 443.85                       |
| East End of West Approach Pavement | 636+82.50 | -20.00 | 443.90                       |

NORTH EDGE OF PAVEMENT

| Location                           | Station   | Offset | Theoretical Grade Elevations |
|------------------------------------|-----------|--------|------------------------------|
| West End of West Approach Pavement | 636+52.50 | -12.00 | 443.92                       |
| A1                                 | 636+62.50 | -12.00 | 443.97                       |
| A2                                 | 636+72.50 | -12.00 | 444.02                       |
| East End of West Approach Pavement | 636+82.50 | -12.00 | 444.07                       |

STAGE CONSTRUCTION JOINT

| Location                           | Station   | Offset | Theoretical Grade Elevations |
|------------------------------------|-----------|--------|------------------------------|
| West End of West Approach Pavement | 636+52.50 | -3.50  | 444.05                       |
| A1                                 | 636+62.50 | -3.50  | 444.10                       |
| A2                                 | 636+72.50 | -3.50  | 444.15                       |
| East End of West Approach Pavement | 636+82.50 | -3.50  | 444.20                       |

☉ ROADWAY & PROFILE GRADE

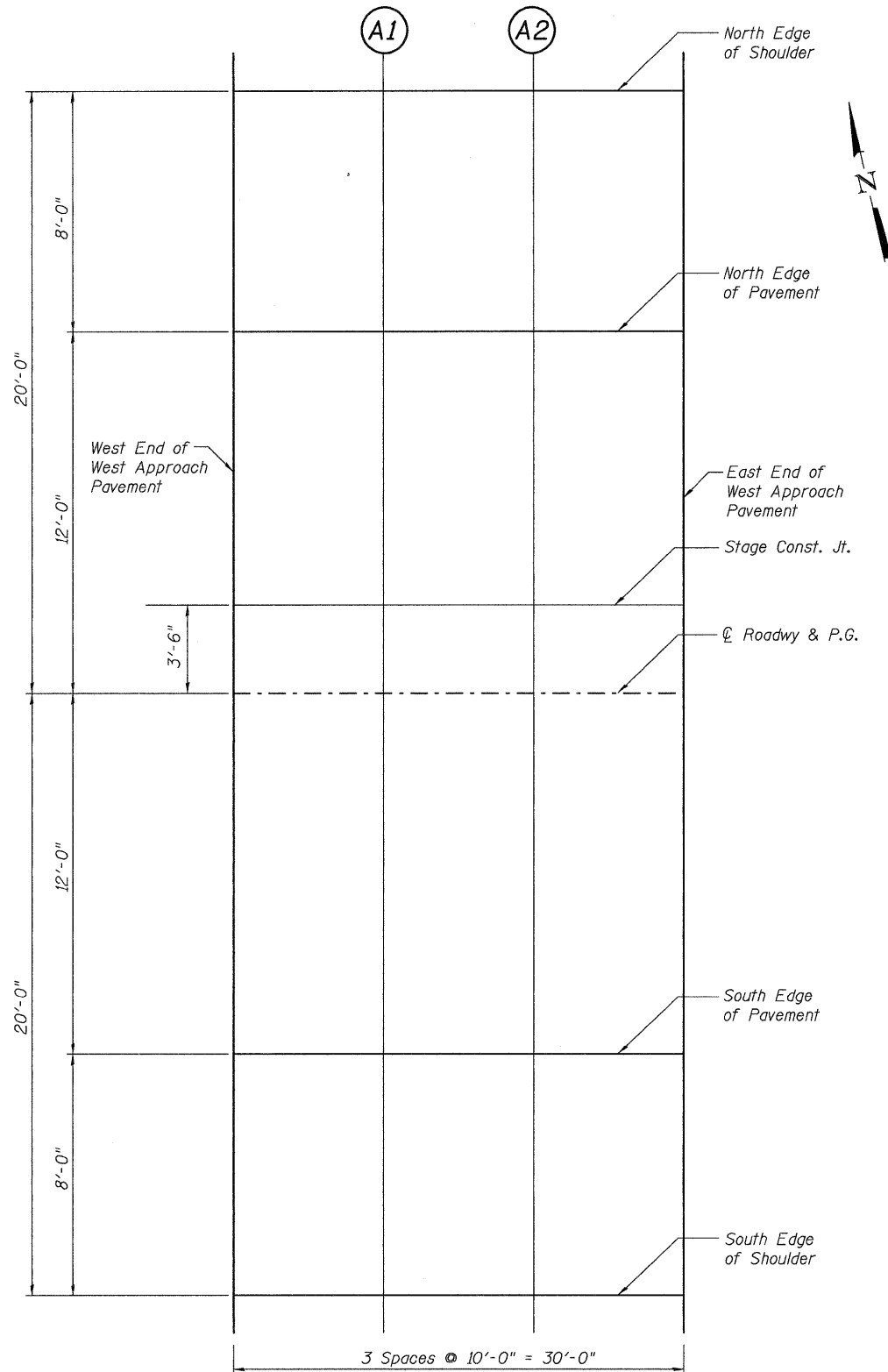
| Location                           | Station   | Offset | Theoretical Grade Elevations |
|------------------------------------|-----------|--------|------------------------------|
| West End of West Approach Pavement | 636+52.50 | 0.00   | 444.11                       |
| A1                                 | 636+62.50 | 0.00   | 444.16                       |
| A2                                 | 636+72.50 | 0.00   | 444.21                       |
| East End of West Approach Pavement | 636+82.50 | 0.00   | 444.26                       |

SOUTH EDGE OF PAVEMENT

| Location                           | Station   | Offset | Theoretical Grade Elevations |
|------------------------------------|-----------|--------|------------------------------|
| West End of West Approach Pavement | 636+52.50 | -12.00 | 443.92                       |
| A1                                 | 636+62.50 | -12.00 | 443.97                       |
| A2                                 | 636+72.50 | -12.00 | 444.02                       |
| East End of West Approach Pavement | 636+82.50 | -12.00 | 444.07                       |

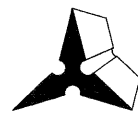
SOUTH EDGE OF SHOULDER

| Location                           | Station   | Offset | Theoretical Grade Elevations |
|------------------------------------|-----------|--------|------------------------------|
| West End of West Approach Pavement | 636+52.50 | -20.00 | 443.75                       |
| A1                                 | 636+62.50 | -20.00 | 443.80                       |
| A2                                 | 636+72.50 | -20.00 | 443.85                       |
| East End of West Approach Pavement | 636+82.50 | -20.00 | 443.90                       |



**PLAN**  
West Approach

|          |     |
|----------|-----|
| DESIGNED | DB  |
| CHECKED  | RS  |
| DRAWN    | ER  |
| CHECKED  | WWH |



**Juneau Associates, Inc. P.C.**  
CONSULTING ENGINEERS AND LAND SURVEYORS  
2100 State Street  
Grafton City, Illinois 62040  
Phone: (618) 871-1400  
Fax: (618) 452-5541  
100 North Research Drive  
Edwardsville, Illinois 62025  
Phone: (618) 659-0800 / (618) 659-0800  
Fax: (618) 659-0941  
Registered Professional Service Corporation License No. 184-003389

Notes:

Elevations are at top of concrete.

All stations and offsets are given with respect to centerline of profile grade.

**TOP OF APPROACH  
SLAB ELEVATIONS  
ILLINOIS ROUTE 3 OVER  
PIASA CREEK  
F.A.U. ROUTE 8956 SEC 59BR-1  
MADISON COUNTY  
STATION 638+11.00  
STRUCTURE NO. 060-0343**

|                          |                        |                   |                    |                    |                 |
|--------------------------|------------------------|-------------------|--------------------|--------------------|-----------------|
| SHEET NO. 9<br>28 SHEETS | F.A.U. RTE.<br>8956    | SECTION<br>59BR-1 | COUNTY<br>MADISON  | TOTAL SHEETS<br>75 | SHEET NO.<br>38 |
|                          | STRUCTURE NO. 060-0343 |                   | CONTRACT NO. 76B18 |                    |                 |
| FED. ROAD DIST. NO.      |                        | ILLINOIS          | FED. AID PROJECT   |                    |                 |