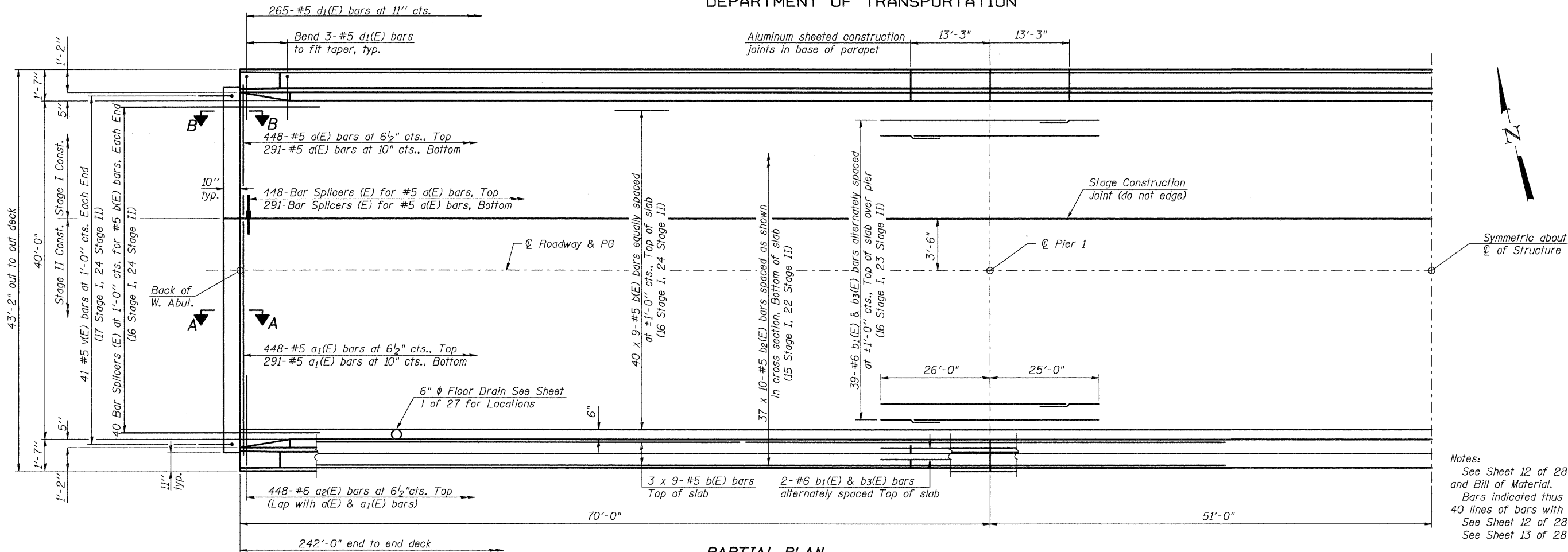
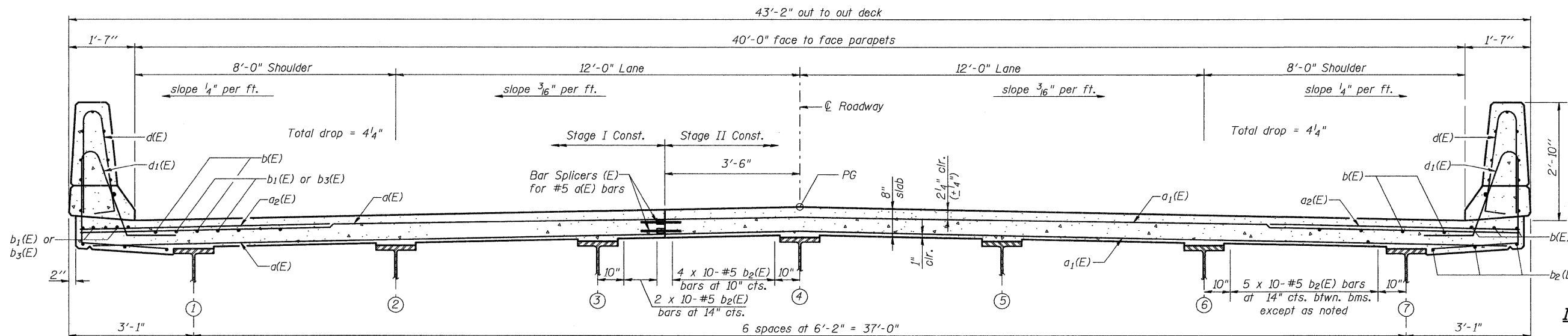


STATE OF ILLINOIS
DEPARTMENT OF TRANSPORTATION



Notes:
See Sheet 12 of 28 for superstructure details and Bill of Material.
Bars indicated thus 40 x 6-#5 etc. indicates 40 lines of bars with 6 lengths per line.
See Sheet 12 of 28 for parapet reinforcement.
See Sheet 13 of 28 for Sec. A-A and Sec. B-B.

PARTIAL PLAN



MIN. BAR LAP
#5 bars = 1'-8"
#6 bars = 2'-0"

NEAR PIER

CROSS SECTION
(Looking East)

NEAR MIDSPAN

SUPERSTRUCTURE
ILLINOIS ROUTE 3 OVER
PIASA CREEK
F.A.U. ROUTE 8956 SEC 59BR-1
MADISON COUNTY
STATION 638+11.00
STRUCTURE NO. 060-0343

DESIGNED	DB
CHECKED	RS
DRAWN	ER
CHECKED	WWH



Juneau Associates, Inc. P.C.
CONSULTING ENGINEERS AND LAND SURVEYORS
2198 State Street
Grafton City, Illinois 62040
Phone: (618) 977-1400
Fax: (618) 452-5541
100 North Research Drive
Edwardsville, Illinois 62025
Phone: (618) 659-0900/(618) 659-0800
Fax: (618) 659-0941
Registered Professional Service Corporation License No. 184-003389

SHEET NO. 11 28 SHEETS	F.A.U. RTE.	SECTION	COUNTY	TOTAL SHEETS	SHEET NO.
	8956	59BR-1	MADISON	75	40
STRUCTURE NO. 060-0343		CONTRACT NO. 76B18			
FED. ROAD DIST. NO.		ILLINOIS FED. AID PROJECT			