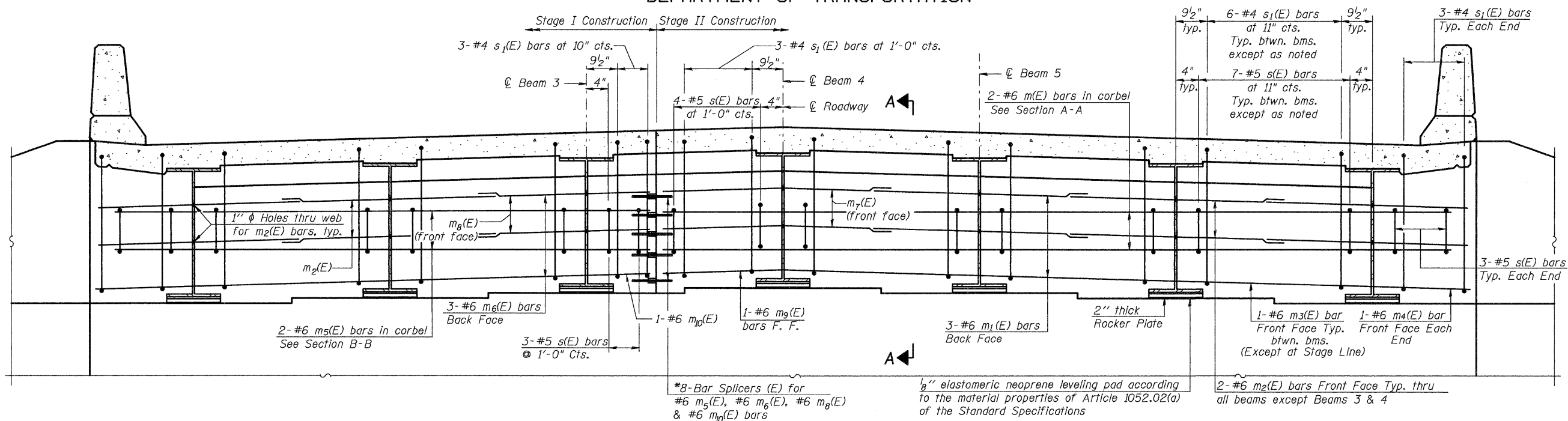


STATE OF ILLINOIS
DEPARTMENT OF TRANSPORTATION



DIAPHRAGM ELEVATION AT ABUTMENT

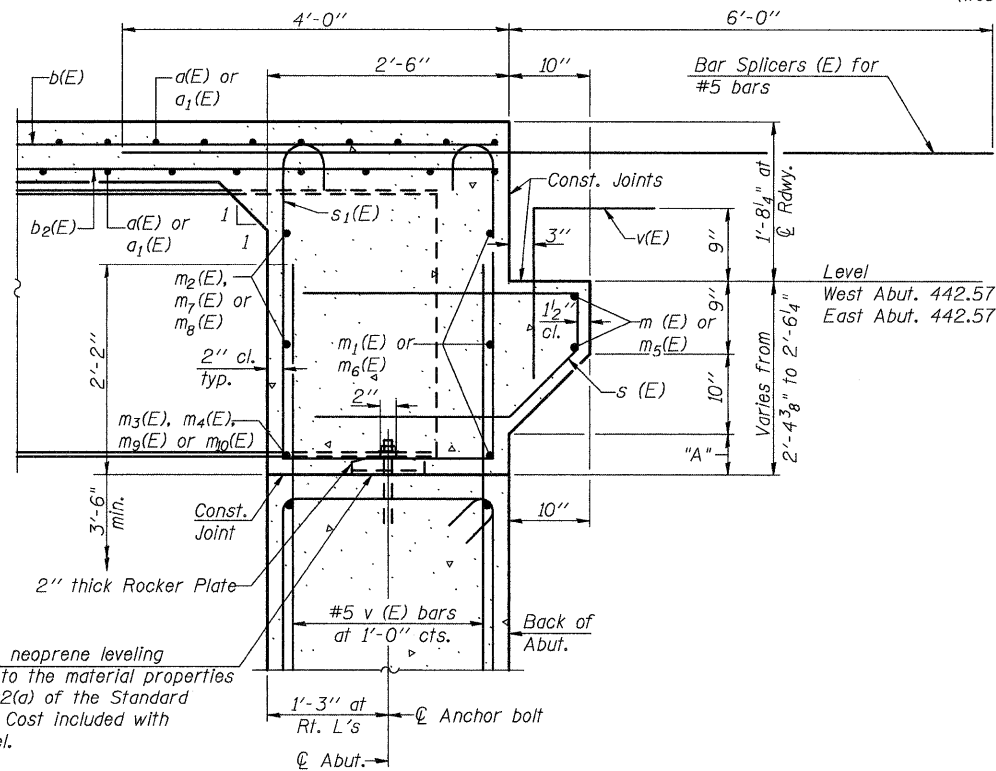
East Abutment Looking East
(West Abutment Similar, But Opposite Hand)

* Cut Bar Splicer for m₆(E) bars to fit.

Notes:
Reinforcement bars in diaphragm are billed with superstructure on sheet 12 of 28
Concrete in diaphragm is included with Concrete Superstructure on sheet 12 of 28
For details of bars s(E) & s₁(E) see sheet 12 of 28
The s(E) and s₁(E) bars shall be placed parallel to the beams. Spacing for these bars shall be at right angles to the beams.

MIN. BAR LAP

#6 bar = 2'-7"



SECTION A-A

Dimensions at right angles to abutment, except as shown

Juneau Associates, Inc. P.C.
CONSULTING ENGINEERS AND LAND SURVEYORS

2100 State Street
Grafton City, Illinois 62040
Phone: (618) 977-1400
Fax: (618) 652-9541
100 North Research Drive
Edwardsville, Illinois 62025
Phone: (618) 659-0900 / (618) 659-0800
Fax: (618) 659-0941
Registered Professional Service Corporation License No. 184-003389

DIMENSION "A"

Beam	1	2	3	4	5	6	7
W. Abut	11 7/8"	10 1/4"	9 3/8"	8"	9 3/8"	10 1/4"	11 7/8"
E. Abut	11 7/8"	10 1/4"	9 3/8"	8"	9 3/8"	10 1/4"	11 7/8"

See Section A-A and Section B-B for Dimension "A" locations.

DESIGNED	DB
CHECKED	RS
DRAWN	ER
CHECKED	WWH

SHEET NO. 13 28 SHEETS	F.A.U. RTE. 8956	SECTION 59BR-1	COUNTY MADISON	TOTAL SHEETS 75	SHEET NO. 42
	STRUCTURE NO. 060-0343		CONTRACT NO. 76B18		
FED. ROAD DIST. NO.		ILLINOIS	FED. AID PROJECT		

DIAPHRAGM DETAILS
ILLINOIS ROUTE 3 OVER
PIASA CREEK
F.A.U. ROUTE 8956 SEC 59BR-1
MADISON COUNTY
STATION 638+11.00
STRUCTURE NO. 060-0343