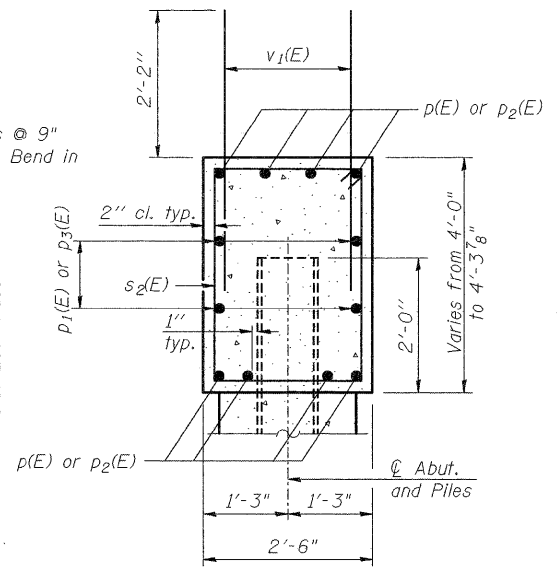
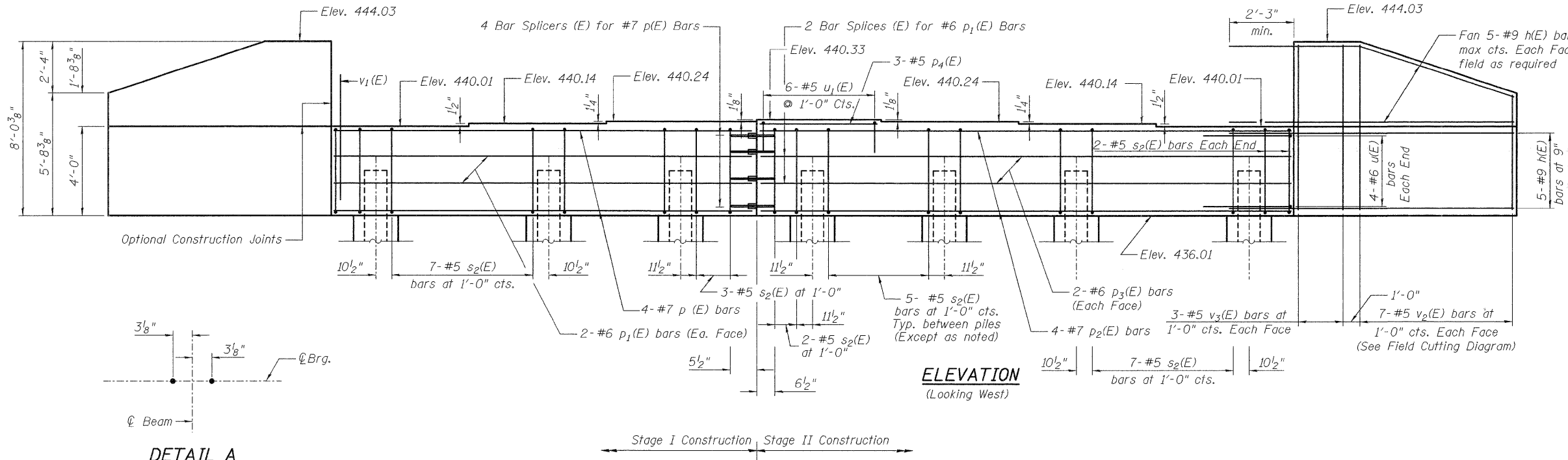


Notes: Four steps monolithically with cap.

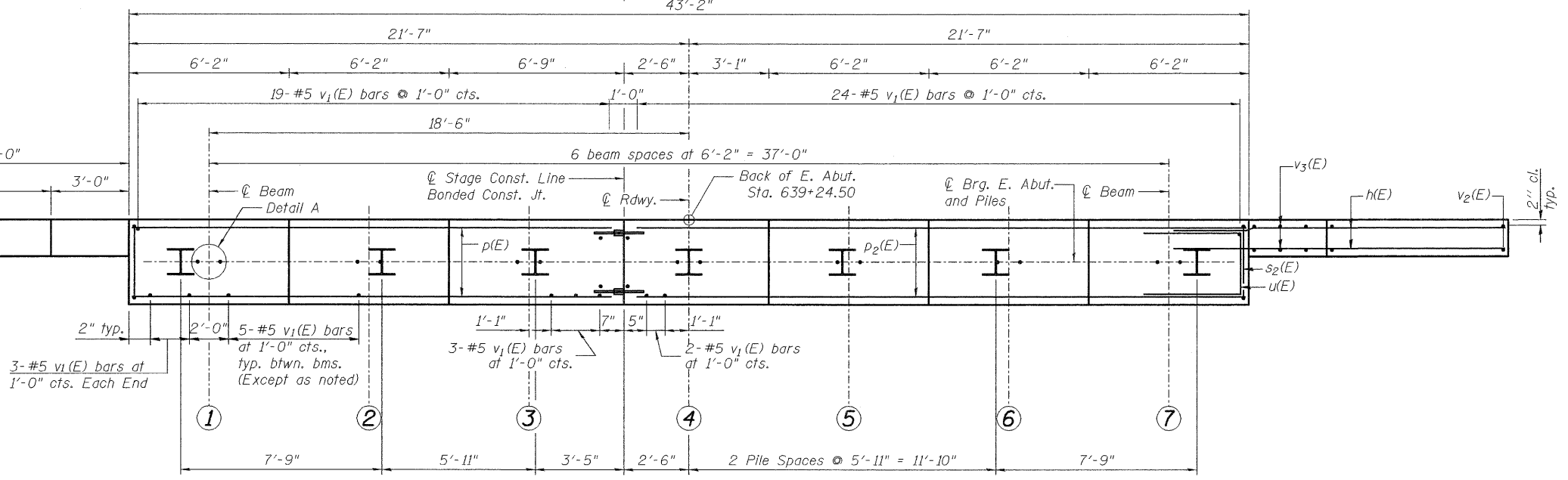
STATE OF ILLINOIS  
DEPARTMENT OF TRANSPORTATION



Bar	No.	Size	Length	Shape
h(E)	40	#9	12'-6"	—
p (E)	8	#7	18'-10"	—
p <sub>1</sub> (E)	4	#6	18'-10"	—
p <sub>2</sub> (E)	8	#7	23'-10"	—
p <sub>3</sub> (E)	4	#6	23'-10"	—
p <sub>4</sub> (E)	3	#5	5'-4"	—
s <sub>2</sub> (E)	38	#5	12'-7"	□
u <sub>1</sub> (E)	8	#6	8'-1"	—
u <sub>2</sub> (E)	6	#5	4'-2"	—
v <sub>1</sub> (E)	79	#5	4'-4"	—
v <sub>2</sub> (E)	14	#5	13'-0"	—
v <sub>3</sub> (E)	12	#5	7'-8"	—
Structure Excavation		Cu. Yd.	136	
Concrete Structures		Cu. Yd.	22.0	
Reinforcement Bars, Epoxy Coated		Pound	3940	
Furnishing Steel Piles HP12x53		Foot	444	
Driving Piles		Foot	444	
Test Pile Steel HP12x53		Each	1	
Concrete Encasement		Cu. Yd.	2.5	
Bar Splicers		Each	12	
Pile Shoes		Each	7	

For details of Bar Splicers, see sheet 24 of 28.  
For HP Pile Details see sheet 22 of 28.  
Space reinforcement in cap to miss anchor bolts.

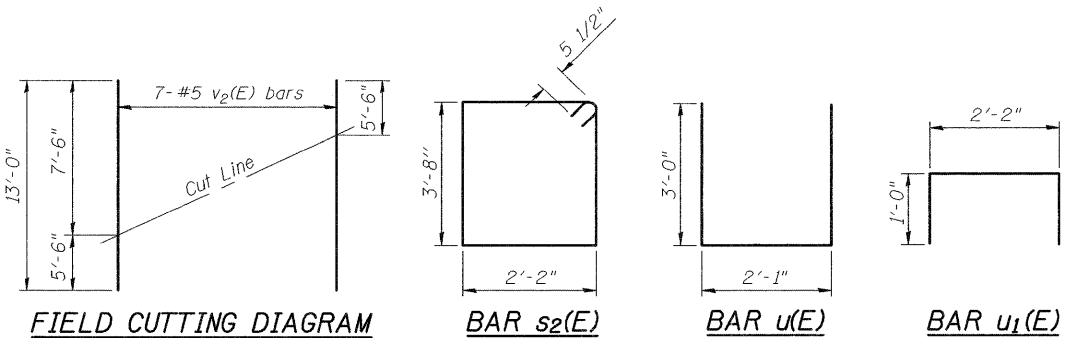
**DETAIL A**



**PILE DATA**

Type: HP 12x53  
Nominal Required Bearing: 340 kips  
Factored Resistance Available: 170 kips  
Est. Length: 74 ft.  
No. Production Piles: 6  
No. Test Piles: 1

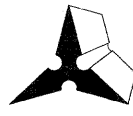
**FIELD CUTTING DIAGRAM**



Order v<sub>2</sub>(E) full length. Cut as shown and use remainder of bars in opposite face.

**EAST ABUTMENT**  
**ILLINOIS ROUTE 3 OVER**  
**PIASA CREEK**  
**F.A.U. ROUTE 8956 SEC 59BR-1**  
**MADISON COUNTY**  
**STATION 638+11.00**  
**STRUCTURE NO. 060-0343**

DESIGNED	DB
CHECKED	RS
DRAWN	ER
CHECKED	WWH



**Juneau Associates, Inc. P.C.**  
CONSULTING ENGINEERS AND LAND SURVEYORS  
2100 State Street  
Granite City, Illinois 62040  
Phone: (618) 937-1400  
Fax: (618) 452-5541  
100 North Research Drive  
Edwardsville, Illinois 62025  
Phone: (618) 659-0000 (618) 656-0000  
Fax: (618) 659-0941  
Registered Professional Service Corporation License No. 184-003389

SHEET NO. 17 28 SHEETS	F.A.U. RTE.	SECTION	COUNTY	TOTAL SHEETS	SHEET NO.
	8956	59BR-1	MADISON	46	46
STRUCTURE NO. 060-0343		CONTRACT NO. 76B18			
FED. ROAD DIST. NO.		ILLINOIS FED. AID PROJECT			