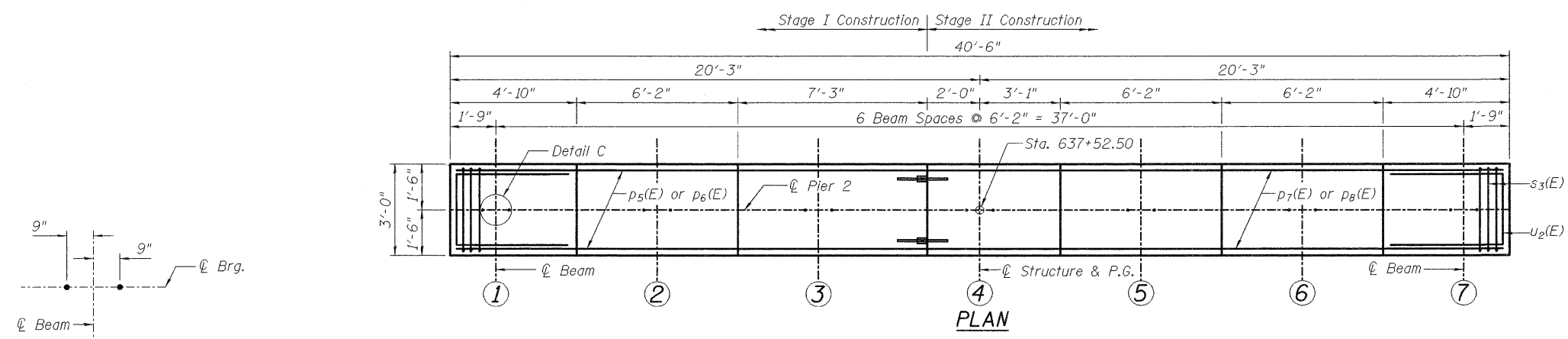
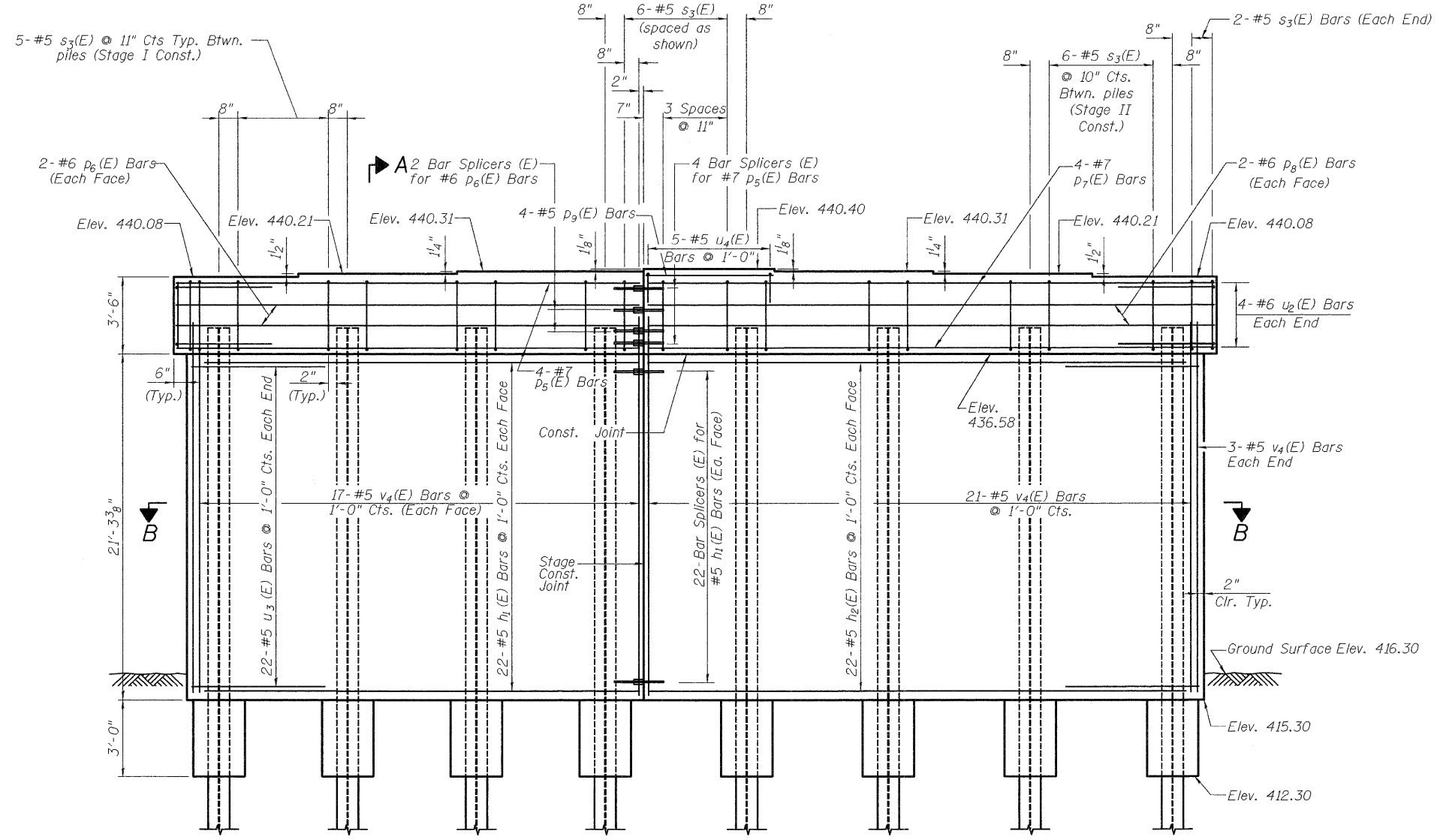
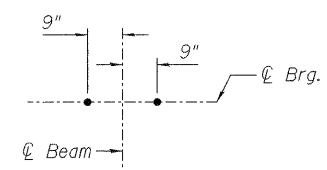


STATE OF ILLINOIS
DEPARTMENT OF TRANSPORTATION



DETAIL C



ELEVATION
(Looking East)

PILE DATA

Type: HP 12x74
Nominal Required Bearing: 584 kips
Factored Resistance Available: 290 kips
Est. Length: 82 ft.
No. Production Piles: 7
No. Test Piles: 1

PIER 2
ILLINOIS ROUTE 3 OVER
PIASA CREEK
F.A.U. ROUTE 8956 SEC 59BR-1
MADISON COUNTY
STATION 638+11.00
STRUCTURE NO. 060-0343

DESIGNED	DB
CHECKED	RS
DRAWN	ER
CHECKED	WWH

Juneau Associates, Inc. P.C.
CONSULTING ENGINEERS AND LAND SURVEYORS

2100 State Street
Granite City, Illinois 62040
Phone: (618) 977-1400
Fax: (618) 451-5541
Registered Professional Service Corporation License No. 184-003389

100 North Research Drive
Edwardsville, Illinois 62026
Phone: (618) 659-0900/(618) 659-0900
Fax: (618) 659-0941

SHEET NO. 20	F.A.U. RTE.	SECTION	COUNTY	TOTAL SHEETS	SHEET NO.
	8956	59BR-1	MADISON		49
28 SHEETS	STRUCTURE NO. 060-0343		CONTRACT NO. 76B18		
FED. ROAD DIST. NO.		ILLINOIS		FED. AID PROJECT	