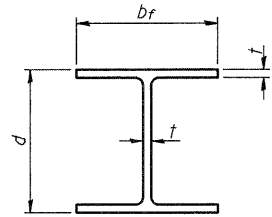
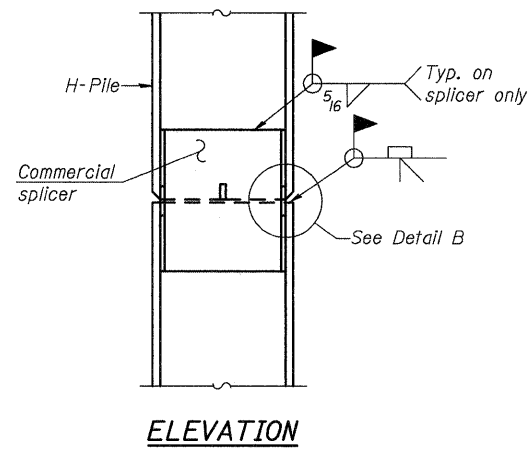


STATE OF ILLINOIS
DEPARTMENT OF TRANSPORTATION

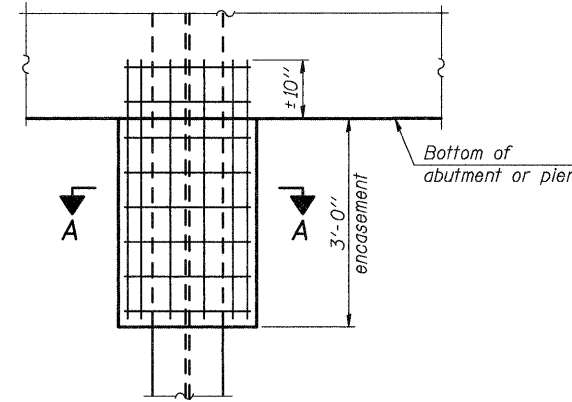


STEEL PILE TABLE

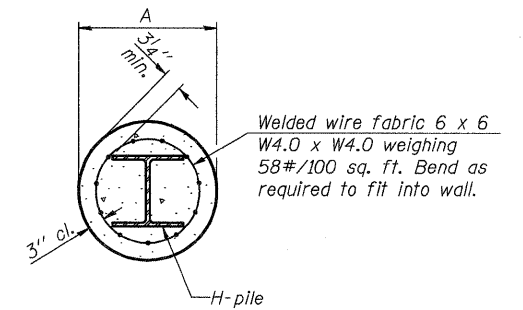
Designation	Depth d	Flange width bf	Web and Flange thickness t	Encasement diameter A
HP 14x117	14 1/4"	14 7/8"	13/16"	30"
x102	14"	14 3/4"	11/16"	30"
x89	13 7/8"	14 3/4"	5/8"	30"
x73	13 5/8"	14 5/8"	1/2"	30"
HP 12x84	12 1/4"	12 1/4"	11/16"	24"
x74	12 1/8"	12 1/4"	5/8"	24"
x63	12"	12 1/8"	1/2"	24"
x53	11 3/4"	12"	7/16"	24"
HP 10x57	10"	10 1/4"	9/16"	24"
x42	9 3/4"	10 1/8"	7/16"	24"
HP 8x36	8"	8 1/8"	7/16"	18"



ELEVATION



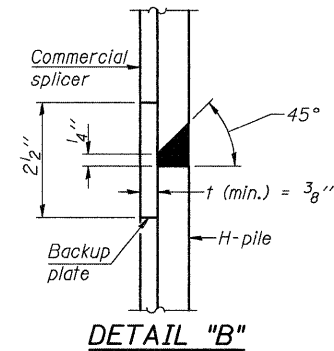
ELEVATION



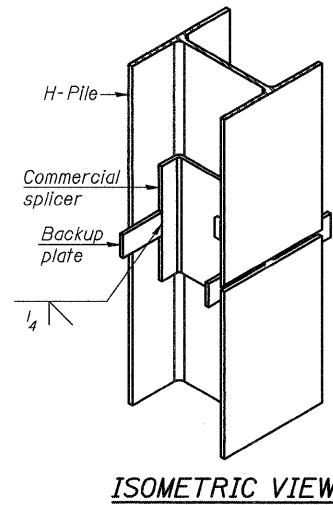
SECTION A-A

Note: Forms for encasement may be omitted when soil conditions permit.

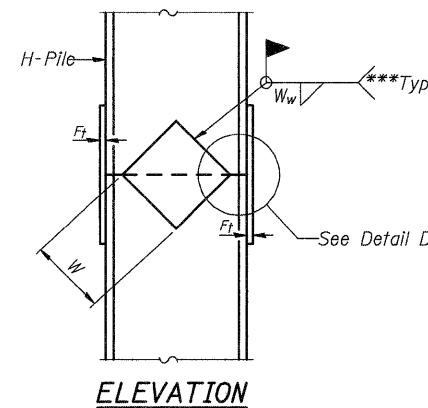
PILE ENCASUREMENT



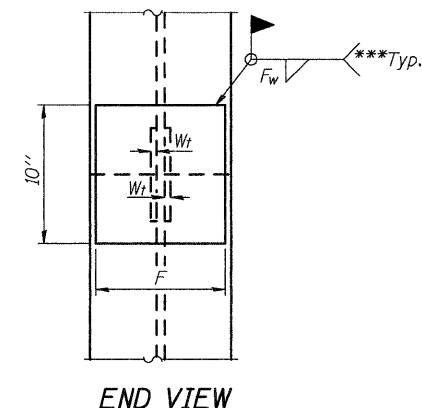
DETAIL "B"



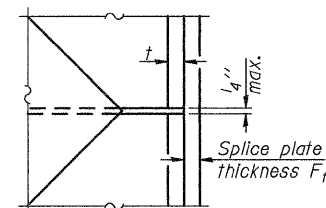
ISOMETRIC VIEW



ELEVATION



END VIEW



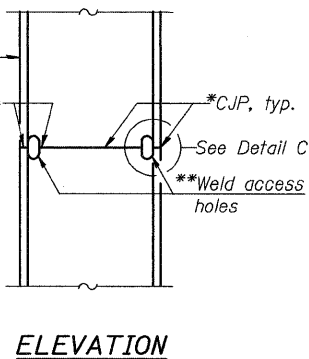
DETAIL D

Designation	F	Ft	Fw	W	Wt	Ww
HP 14x117	12 1/2"	1"	7/8"	7 3/4"	5 1/2"	1/2"
x102	12 1/2"	7/8"	3/4"	7 3/4"	5 1/2"	1/2"
x89	12 1/2"	3/4"	11/16"	7 3/4"	5 1/2"	1/2"
x73	12 1/2"	5/8"	9/16"	7 3/4"	5 1/2"	1/2"
HP 12x84	10"	7/8"	11/16"	6 1/2"	5 1/2"	1/2"
x74	10"	7/8"	11/16"	6 1/2"	5 1/2"	1/2"
x63	10"	5/8"	1/2"	6 1/2"	5 1/2"	3/8"
x53	10"	5/8"	1/2"	6 1/2"	5 1/2"	3/8"
HP 10x57	8"	3/4"	9/16"	5 1/4"	5 1/2"	3/8"
x42	8"	5/8"	9/16"	5 1/4"	5 1/2"	3/8"
HP 8x36	7"	5/8"	7/16"	4 1/4"	5 1/2"	3/8"

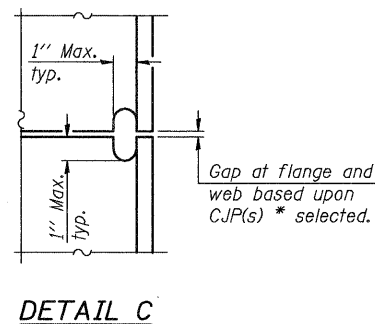
HP PILE DETAILS
ILLINOIS ROUTE 3 OVER
PIASA CREEK
F.A.U. ROUTE 8956 SEC 59BR-1
MADISON COUNTY
STATION 638+11.00
STRUCTURE NO. 060-0343

Note: The steel H-piles shall be according to AASHTO M270 Grade 50.

WELDED PLATE FIELD SPLICE



ELEVATION



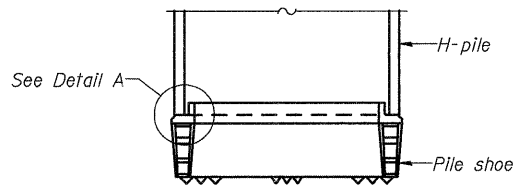
DETAIL C

COMPLETE PENETRATION WELD SPLICE

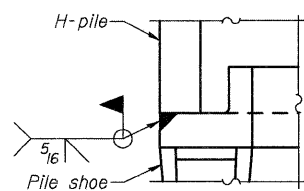
*Use joint conforming to Figure 3.4 in AWS D1.1, Structure Welding Code-Steel.

**Preparation per Fig. 5.2 in AWS D1.1, Structure Welding Code-Steel.

***Interrupt welds 1/4" from end of each pile.



ELEVATION



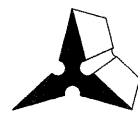
DETAIL A

H-PILE SHOE ATTACHMENT

DESIGNED	DB
CHECKED	RS
DRAWN	ER
CHECKED	WWH

F-HP

5-16-08



Juneau Associates, Inc. P.C.
CONSULTING ENGINEERS AND LAND SURVEYORS
2100 State Street
Grafton City, Illinois 62040
Phone: (618) 977-1400
Fax: (618) 452-9541
100 North Research Drive
Edwardsville, Illinois 62025
Phone: (618) 659-0900/(618) 659-0800
Fax: (618) 659-0941
Registered Professional Service Corporation License No. 184-003389

SHEET NO. 22 28 SHEETS	F.A.U. RTE. 8956	SECTION 59BR-1	COUNTY MADISON	TOTAL SHEETS 75	SHEET NO. 51
	STRUCTURE NO. 060-0343		CONTRACT NO. 76B18		
FED. ROAD DIST. NO.		ILLINOIS		FED. AID PROJECT	