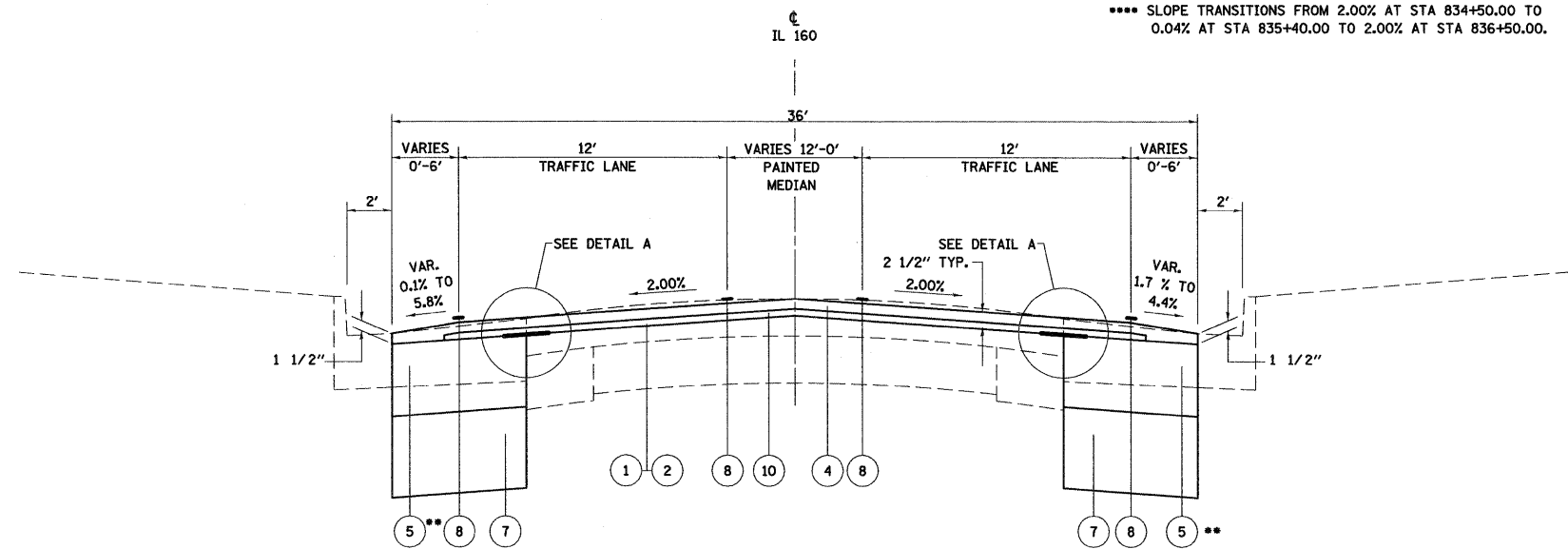


IL 160
TYPICAL SECTION
STA 834+62.50 TO STA 838+70.15

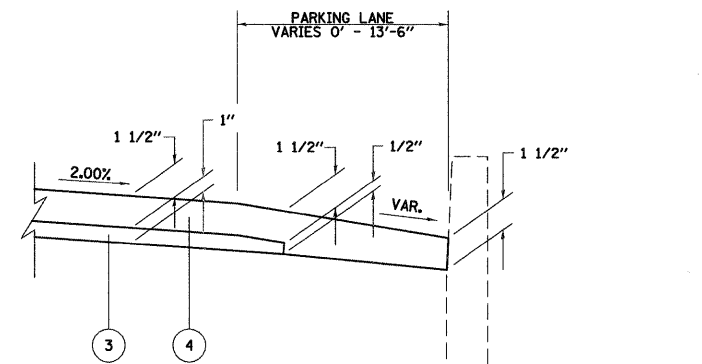
- PROPOSED HOT-MIX ASPHALT BASE COURSE BEGINS: STA 835+89 RT
- PROPOSED CURB AND GUTTER ENDS: STA. 837+50 RT
STA. 838+30 LT
- SLOPE TRANSITIONS FROM 2.00% AT STA 835+10.00 TO 0.16% AT STA 835+40.00 TO 2.00% AT STA 835+70.00.
SLOPE TRANSITIONS FROM 2.00% AT STA 838+20.00 TO 1.00% AT STA 838+66.09 TO 2.00% AT STA 839+00.00.
- SLOPE TRANSITIONS FROM 2.00% AT STA 834+50.00 TO 0.04% AT STA 835+40.00 TO 2.00% AT STA 836+50.00.



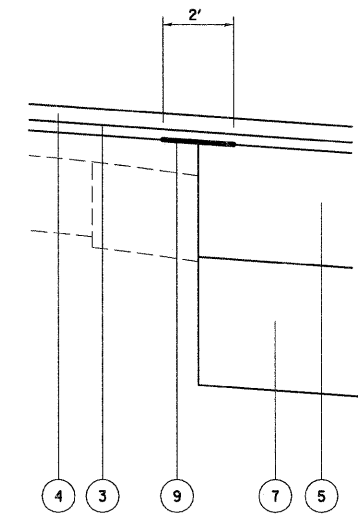
IL 160
TYPICAL SECTION
STA 838+70.15 TO STA 840+70

- PROPOSED HOT-MIX ASPHALT BASE COURSE ENDS STATION 840+00.00

- PROPOSED LEGEND**
- 1 PROPOSED BITUMINOUS MATERIALS (PRIME COAT)
 - 2 PROPOSED AGGREGATE PRIME COAT
 - 3 PROPOSED LEVELING BINDER (MACHINE METHOD) N70, 3/4" AND VARIES (1/2" TO 2 1/2")
 - 4 PROPOSED HOT-MIX ASPHALT SURFACE COURSE N70, 1 1/2" AND VARIES
 - 5 PROPOSED HOT-MIX ASPHALT BASE COURSE, IL-19.0, N70, 11"
 - 6 PROPOSED CURB AND GUTTER, TYPE B-6.24
 - 7 PROPOSED SUB-BASE GRANULAR MATERIAL, TYPE A 12"
 - 8 PROPOSED PAVEMENT MARKING, LINE 4"
 - 9 PROPOSED STRIP REFLECTIVE CRACK CONTROL TREATMENT
 - 10 PROPOSED LEVELING BINDER (MACHINE METHOD) N70, 1"



APPLICATION OF RESURFACING
OF PARKING LANES / SHOULDERS
FOR THIS SECTION



DETAIL A

FILE NAME =	USER NAME = paul	DESIGNED - JWS	REVISED -	STATE OF ILLINOIS DEPARTMENT OF TRANSPORTATION	PROPOSED TYPICAL SECTIONS, IL ROUTE 160	F.A.P. RTE. 690	SECTION 41X-RS-1	COUNTY MADISON	TOTAL SHEETS 58	SHEET NO. 11	
FILEL	PLOT SCALE = 20,000 ' / IN.	DRAWN - WJS	REVISED -			SCALE:	SHEET NO. 2 OF 6 SHEETS	STA. TO STA.	FED. ROAD DIST. NO.	ILLINOIS FED. AID PROJECT	CONTRACT NO. 76C35
	PLOT DATE = 1/13/2009	CHECKED - BRM	REVISED -								
		DATE - 9-30-08	REVISED -								