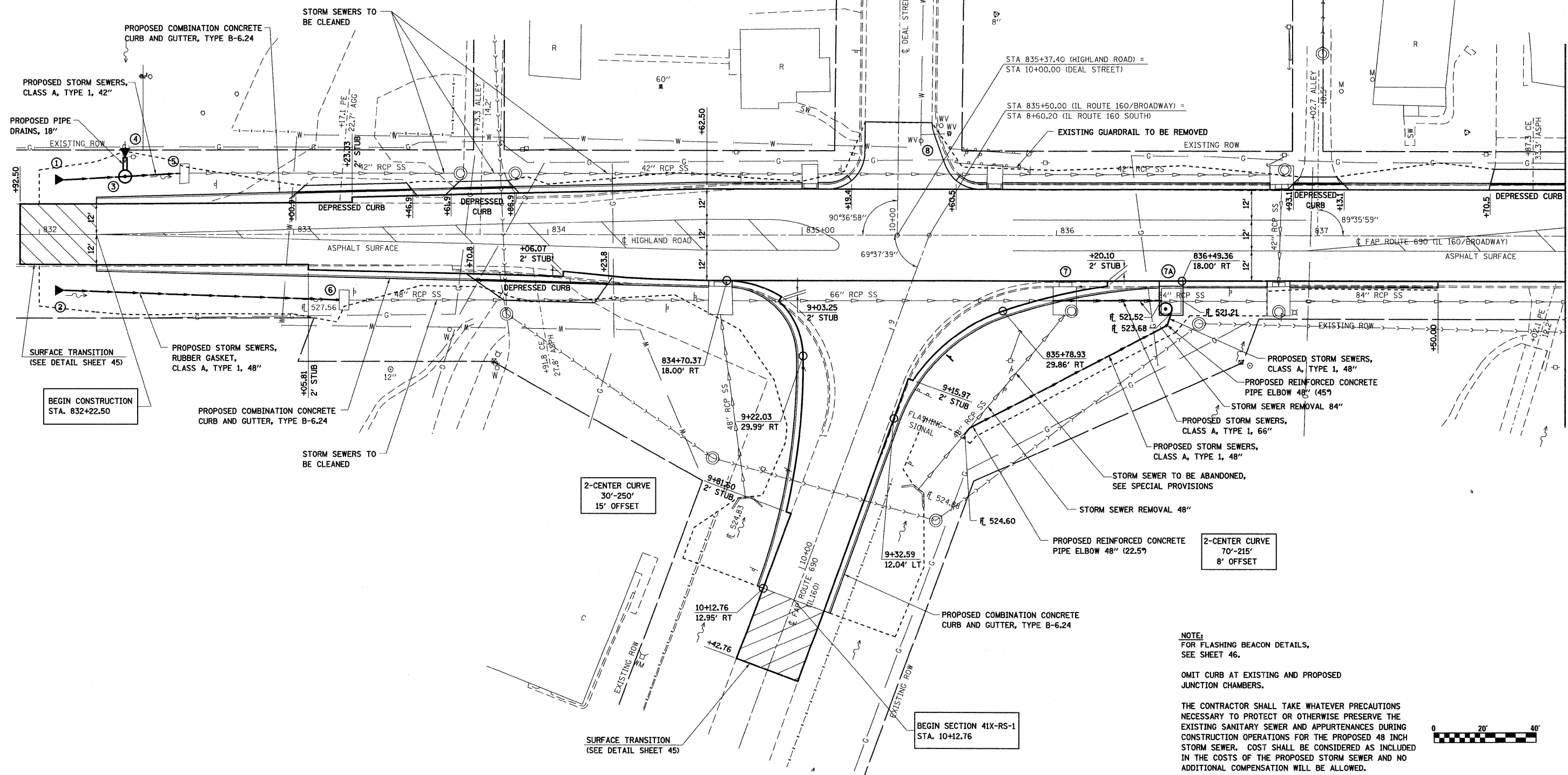


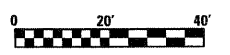
- ① STA. 832+10.00, 21.4' LT
PROPOSED PRECAST REINFORCED
CONCRETE FLARED END SECTIONS, 42"
ELEV. 527.92
- ② STA. 832+10.00, 21.4' RT
PROPOSED PRECAST REINFORCED
CONCRETE FLARED END SECTIONS, 48"
ELEV. 527.65
- ③ STA. 832+33.75, 22.63' LT
PROPOSED MANHOLES, TYPE A, 6' DIAMETER,
TYPE 1 FRAME, CLOSED LID
W/ FLAT TOP SLAB
GR. 531.66
ELEV. 526.40
- ④ STA. 832+33.75, 30.00' LT
PROPOSED METAL END SECTIONS, 18"
ELEV. 529.00
- ⑤ STA. 832+57.08, 23.9' LT
EXISTING INLET TO BE RECONSTRUCTED, SPECIAL
GR. 530.98
ELEV. 525.74
- ⑥ STA. 833+19.86, 26.00' RT
EXISTING INLET TO BE RECONSTRUCTED, SPECIAL
GR. 531.32
ELEV. 525.12
- ⑦ STA. 836+03.23, 25.8' RT
REMOVE EXISTING JUNCTION BOX
- ⑦A STA. 836+45.13, 25.74' RT
PROPOSED JUNCTION CHAMBER
SEE DETAIL SHEET 41-42
GR. 531.86
ELEV. (GUTTER) 530.78
- ⑧ STA. 835+47, 36.9' RT
EXISTING VALVE BOX
TO BE ADJUSTED



NOTE:
FOR FLASHING BEACON DETAILS,
SEE SHEET 46.

OMIT CURB AT EXISTING AND PROPOSED
JUNCTION CHAMBERS.

THE CONTRACTOR SHALL TAKE WHATEVER PRECAUTIONS
NECESSARY TO PROTECT OR OTHERWISE PRESERVE THE
EXISTING SANITARY SEWER AND APPURTENANCES DURING
CONSTRUCTION OPERATIONS FOR THE PROPOSED 48 INCH
STORM SEWER. COST SHALL BE CONSIDERED AS INCLUDED
IN THE COSTS OF THE PROPOSED STORM SEWER AND NO
ADDITIONAL COMPENSATION WILL BE ALLOWED.



FILE NAME =	USER NAME = paul	DESIGNED - ESW	REVISED -	STATE OF ILLINOIS DEPARTMENT OF TRANSPORTATION	PLAN SHEET, IL ROUTE 160	F.A.P. RTE. 690	SECTION 41X-RS-1	COUNTY MADISON	TOTAL SHEETS 58	SHEET NO. 19	
S:\Projects\407-0029-RW IL 160 (HIGHLAND)\dgn\CADD Sheets\0876C35-411-plan.dgn	PLOT SCALE = 20.000' / IN.	CHECKED - BRM	REVISED -			SCALE: 1" = 20'		SHEET NO. 1 OF 9 SHEETS		STA. 832+00.00 TO STA. 838+00.00	
PLOT DATE = 1/13/2009	DATE - 9-29-08	REVISED -	REVISED -			CONTRACT NO. 76C35		FED. ROAD DIST. NO. ILLINOIS FED. AID PROJECT			