

TRAFFIC SIGNAL SCHEDULE

CODED NO	DESCRIPTION	UNIT	TOTAL QUANTITY	CONSTRUCTION CODE		
				100% STATE ROADWAY 1000-2A	50% CITY ROADWAY 1000-2A	100% CITY ROADWAY 1000-2A
81000400	CONDUIT IN TRENCH, 1 1/4" DIA., GALVANIZED STEEL	FOOT	24	24		
81000500	CONDUIT IN TRENCH, 1 1/2" DIA., GALVANIZED STEEL	FOOT	28	28		
87301215	ELECTRIC CABLE IN CONDUIT, SIGNAL NO. 14, 2C	FOOT	61	61		
88500100	INDUCTIVE LOOP DETECTOR	EACH	18	18		
88600100	DETECTOR LOOP, TYPE I	FOOT	3394	3394		
89501510	RELOCATE EXISTING FLASHING BEACON	EACH	1	1		

GENERAL NOTES

ALL TRAFFIC SIGNAL CABLE SHALL BE #14 AWG STRANDED COPPER UNLESS OTHERWISE SPECIFIED.

THE LOCATION OF ALL DETECTOR LOOPS SHALL BE APPROVED BY THE ENGINEER BEFORE ANY SLOTS ARE SAWED IN THE PAVEMENT. DETECTOR LOOPS SHALL BE CENTERED IN RESPECTIVE LANE.

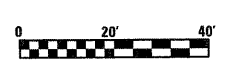
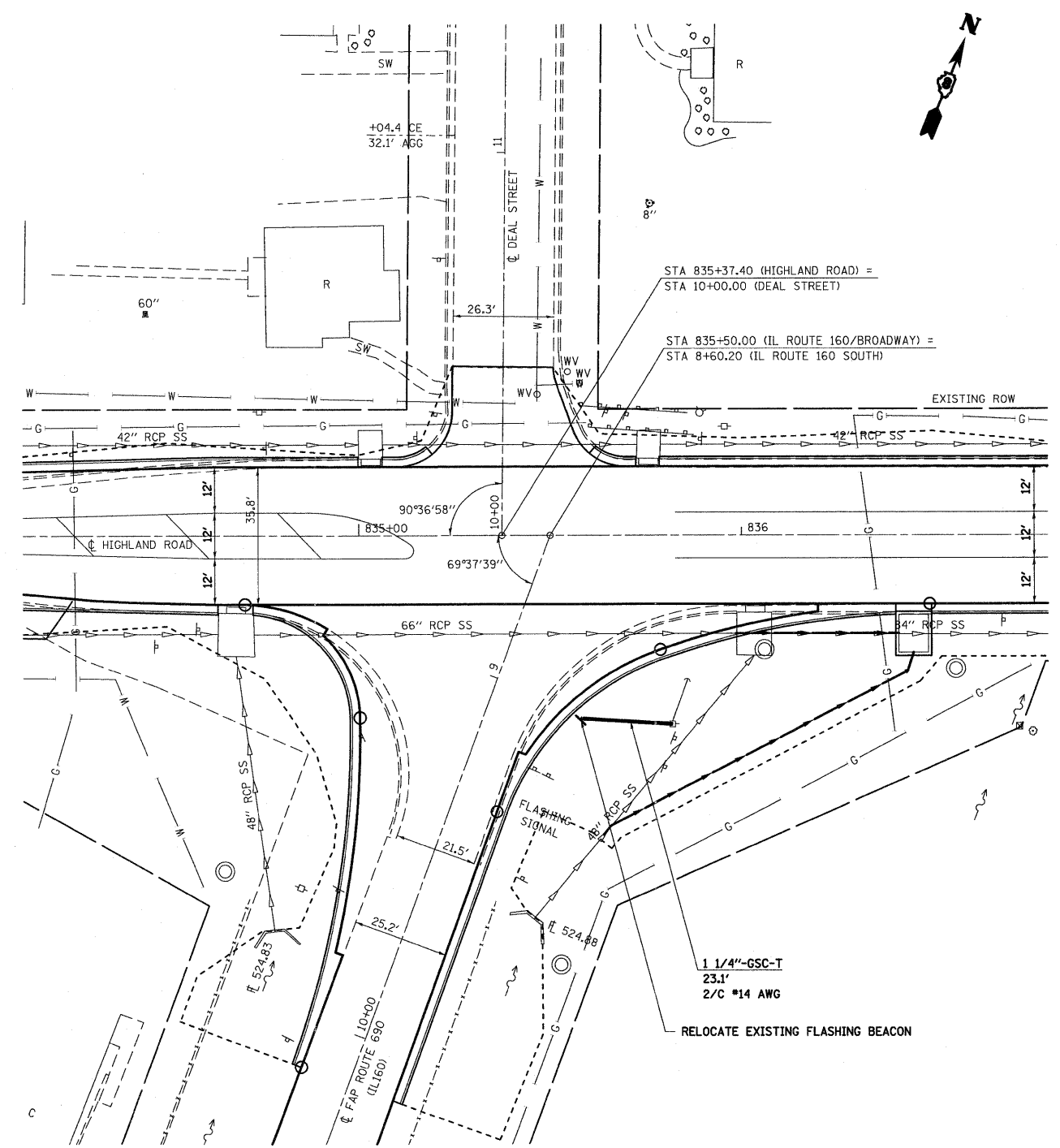
DETECTOR LOOP LEAD-IN SPLICES SHALL BE MADE IN A HANDHOLE. CONDUCTORS SHALL BE SPLICED IN A RIGID MOLD. ROSIN CORE SOLDER SHALL BE USED.

THE NUMBER OF TURNS FOR INDUCTIVE LOOP INSTALLATION SHALL BE AS FOLLOWS:
ALL QUADRAPOLE LOOPS SHALL BE 3-6-3 6'X50'.

IN AREAS THAT ARE TO RECEIVE HOT-MIX ASPHALT LEVELING BINDER AND SURFACE OVERLAYS THE DETECTOR LOOPS SHALL BE INSTALLED AFTER THE LEVELING BINDER AND PRIOR TO THE SURFACE COURSE.

CABLE DIAGRAM LEGEND

- ELECTRIC CABLE IN CONDUIT
- - - EXISTING ELECTRIC CABLE IN CONDUIT
- S PROPOSED CABLE SPLICE (SEE GENERAL NOTES)
- 2/C ELECTRIC CABLE IN CONDUIT, NO. 14 2/C
- 5/C ELECTRIC CABLE IN CONDUIT, NO. 14 5/C
- 7/C ELECTRIC CABLE IN CONDUIT, NO. 14 7/C
- 2/C #6 AWG ELECTRIC CABLE IN CONDUIT, NO. 6 2/C (SERVICE)
- ID IN ELECTRIC CABLE LEAD-IN, 1 PAIR
- CD CALL DELAY (SEE GENERAL NOTES)
- CCO CALL CARRY OVER (SEE GENERAL NOTES)
- *6 INDICATES AMERICAN WIRE GAUGE (AWG) SIZE 6 CONDUCTORS (SEE GENERAL NOTES)



FILE NAME =	USER NAME = paul	DESIGNED - ESW	REVISED -	STATE OF ILLINOIS DEPARTMENT OF TRANSPORTATION	TRAFFIC SIGNAL SHEET, FLASHING BEACON, IL ROUTE 160	F.A.P. RTE. 690	SECTION 41X-RS-1	COUNTY MADISON	TOTAL SHEETS 58	SHEET NO. 46	
Si\Projects\407-0029-81V IL 160 (98)HILAND\dn\CA00 Sheets\0876C35-ah1-fa.dgn	PLOT SCALE = 20,000' / IN.	DRAWN - WJS	REVISED -			SCALE: 1" = 20'	SHEET NO. 1 OF 5 SHEETS	STA. 832+00.00 TO STA. 838+00.00	FED. ROAD DIST. NO. ILLINOIS FED. AID PROJECT	CONTRACT NO. 76C35	
	PLOT DATE = 1/14/2009	CHECKED - BRM	REVISED -								
		DATE - 9-29-08	REVISED -								