

STATE OF ILLINOIS  
 DEPARTMENT OF TRANSPORTATION  
 DIVISION OF HIGHWAYS

**PROPOSED  
 HIGHWAY PLANS**

FAP ROUTE: 788 (RELOCATED IL 3)  
 DEMOLITION  
 SECTION: 520-2-2DM7  
 MADISON COUNTY  
 C-98-013-09  
 D-98-018-09

FOR INDEX OF SHEETS, SEE SHEET NO. 2

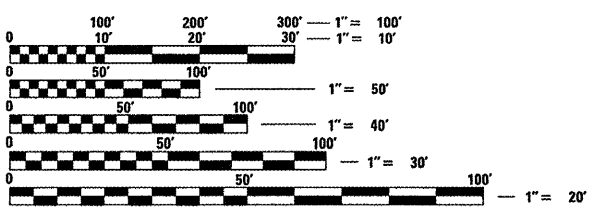
F.A. RTE.	SECTION	COUNTY	TOTAL SHEETS	SHEET NO.
788	520-2-2DM6-1	MADISON	5	1
FED. ROAD DIST. NO.	ILLINOIS	CONTRACT NO. 76C73		

D-98-066-00



LOCATION OF SECTION INDICATED THUS: - ■ -

FULL SIZE SCALES:  
 PLAN 1" = 20'  
 PROFILE HORIZ. 1" = 20'  
 PROFILE VERT. 1" = 5'  
 CROSS SECTIONS HORIZ. 1" = 10'  
 CROSS SECTIONS VERT. 1" = 5'

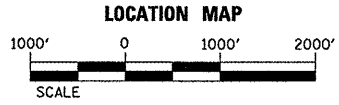
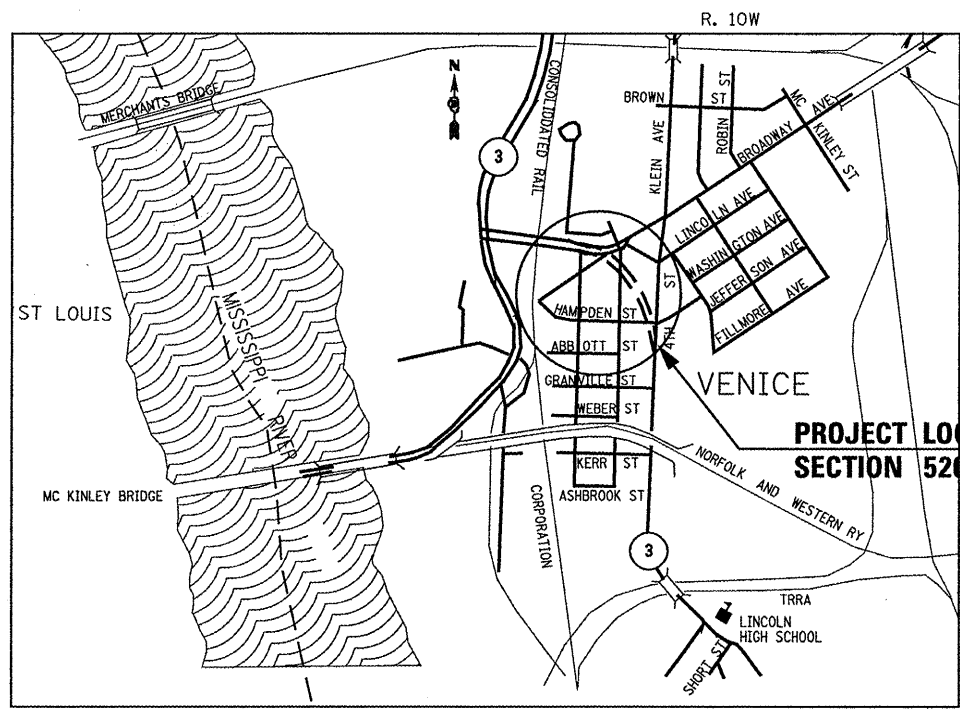


FULL SIZE PLANS HAVE BEEN PREPARED USING STANDARD ENGINEERING SCALES. REDUCED SIZED PLANS WILL NOT CONFORM TO STANDARD SCALES. IN MAKING MEASUREMENTS ON REDUCED PLANS, THE ABOVE SCALES MAY BE USED.

J.U.L.I.E.  
 JOINT UTILITY LOCATION INFORMATION FOR EXCAVATION  
 1-800-892-0123  
 OR 811

PROJECT ENGINEER : MICHAEL D. PRITCHETT (618) 346-3180  
 SQUAD LEADER : JANE CHASTAIN MERCER (618) 346-3206

CONTRACT NO. 76C73



PROJECT LOCATION  
 SECTION 520-2-2DM7

FINAL PLANS  
 JANUARY 9, 2009

PLANS PREPARED BY:  
 JACOBS ENGINEERING GROUP, INC.  
 501 NORTH BROADWAY  
 ST. LOUIS, MO 63102

STATE OF ILLINOIS  
 DEPARTMENT OF TRANSPORTATION  
 DIVISION OF HIGHWAYS

SUBMITTED 1-15-2009  
 Deputy Director of Highways, Region 5 Engineer  
 March 27, 2009  
 Engineer of Design and Environment  
 March 27, 2009  
 Director of Highways, Chief Engineer



SIGNATURE: *Todd A. Welz*  
 DATE: 1/09/09  
 LICENSE EXPIRES: 11/30/09

PRINTED BY THE AUTHORITY  
 OF THE STATE OF ILLINOIS

01/14/2009  
 Wednesday, January 14, 2009 8:13:20 PM  
 P:\C\13681\788\cd\782\c\w\1\Demo Plans 12-19-08\3-n\at\le.dgn LV=11-643  
 [BL] LV=  
 REF - LOCATION

INDEX OF SHEETS

- 1 COVER SHEET
- 2 INDEX OF SHEETS AND GENERAL NOTES
- 3 SUMMARY OF QUANTITIES
- 4-5 DETAILED LOCATION MAPS

BUILDING REMOVAL KEY

BUILDING NO.	PARCEL NO.	DESCRIPTION
1.	8015041	780 SQ.FT. ONE-STORY WOOD FRAME BUILDING WITH CRAWL SPACE
2.	8015022	990 SQ.FT. ONE-STORY WOOD FRAME BUILDING WITH FULL BASEMENT

GENERAL NOTES

ALL AREAS DISTURBED FOR ANY REASON SHALL BE SEEDED WITH CLASS 2 SEEDING AS DIRECTED BY THE ENGINEER.

MULCH SHALL CONFORM TO SECTION 251 OF THE STANDARD SPECIFICATIONS. MULCH SHALL CONFORM TO METHOD 2, PROCEDURE 2 AS SPECIFIED IN ARTICLE 251.03.

ILLINOIS STATE LAW REQUIRES A 48-HOUR NOTICE BE GIVEN TO ALL UTILITIES BEFORE DIGGING. FIELD MARKING OF FACILITIES MAY BE OBTAINED BY CONTACTING J.U.L.I.E. OR, FOR NON-MEMBERS, BY CONTACTING THE UTILITY COMPANY DIRECTLY. THE FOLLOWING AGENCIES ARE KNOWN TO HAVE FACILITIES WITHIN THE PROJECT AREA.

- AMEREN IP
- AT&T DISTRIBUTION
- AT&T TRANSMISSION
- CENTERPOINT ENERGY PIPELINE SERVICES
- CHARTER COMMUNICATIONS
- CONSOLIDATED TELEPHONE
- ILLINOIS AMERICAN WATER CO.
- LEVEL 3 COMMUNICATIONS
- MCI
- NETWORKS, 360
- QWEST
- SPRINT

CITY OF VENICE - (618) 877-1400  
 METRO EAST SANITARY DISTRICT - (618) 452-9400

MEMBERS OF J.U.L.I.E. (800)-892-0123 ARE INDICATED BY \*.  
 NON-J.U.L.I.E. MEMBERS MUST BE NOTIFIED INDIVIDUALLY.

ALL BASEMENTS OR VOIDS SHALL BE FILLED WITH SUITABLE MATERIAL AS SPECIFIED IN THE STANDARD SPECIFICATION, ARTICLE 1003.01 AS STATED IN THE SPECIAL PROVISIONS. STEEL SLAG SAND SHALL NOT BE USED.

ALL PUBLIC OR CITY OWNED SIDEWALKS SHALL REMAIN.  
 ANY DAMAGE SHALL BE THE RESPONSIBILITY OF THE CONTRACTOR.

STANDARDS

- 701006 - 03
- 701801 - 04
- 701901 - 01

FILE NAME = r3nfnote_new.dgn	USER NAME = rossr1	DESIGNED - R. ROSS	REVISED -
		DRAWN - R. ROSS	REVISED -
		CHECKED - T. WELZ	REVISED -
		DATE - 12-19-08	REVISED -

**STATE OF ILLINOIS  
 DEPARTMENT OF TRANSPORTATION**

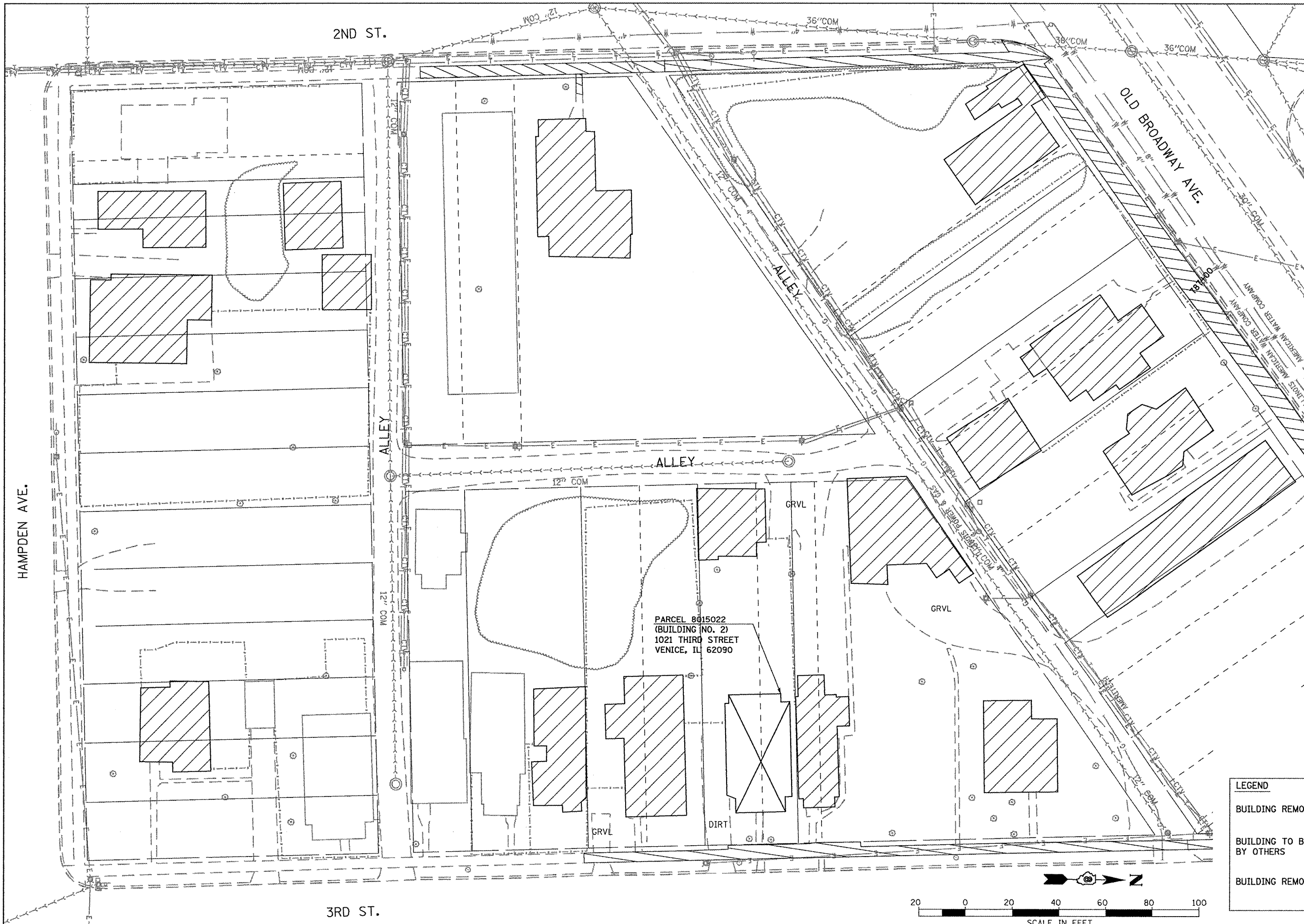
**INDEX OF SHEETS AND GENERAL NOTES**

SCALE: SHEET NO. 1 OF 1 SHEETS STA. TO STA.

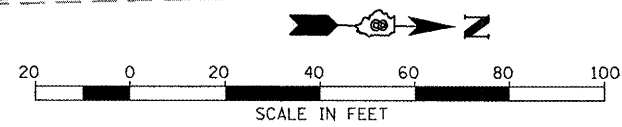
F.A. RTE.	SECTION	COUNTY	TOTAL SHEETS	SHEET NO.
788	520-2-2DM7	MADISON	5	2
CONTRACT NO. 76C73				
FED. ROAD DIST. NO. ILLINOIS FED. AID PROJECT				







LEGEND	
BUILDING REMOVAL	
BUILDING TO BE REMOVED BY OTHERS	
BUILDING REMOVED PREVIOUSLY	



FILE NAME = r3ndemo88\_new.dgn

USER NAME = rossr1	DESIGNED - R. ROSS	REVISED -
PLOT SCALE = \$SCALE\$	DRAWN - R. ROSS	REVISED -
PLOT DATE = 01/08/2009	CHECKED - T. WELZ	REVISED -
	DATE - 12-19-08	REVISED -

**STATE OF ILLINOIS  
DEPARTMENT OF TRANSPORTATION**

<b>DETAILED LOCATION MAP</b>			
SCALE:	SHEET NO. 2 OF 2 SHEETS	STA.	TO STA.

F.A. RTE.	SECTION	COUNTY	TOTAL SHEETS	SHEET NO.
788	520-2-2DM7	MADISON	5	5
CONTRACT NO. 76C73				
FED. ROAD DIST. NO.	ILLINOIS FED. AID PROJECT			

**FINAL PLANS**