

F.A. RTE.	SECTION	COUNTY	TOTAL SHEETS	SHEET NO.
776	102B-1	HAMILTON	53	1
FED. ROAD DIST. NO.	ILLINOIS	CONTRACT NO. 78016		

D-99-039-07

STATE OF ILLINOIS
DEPARTMENT OF TRANSPORTATION
DIVISION OF HIGHWAYS

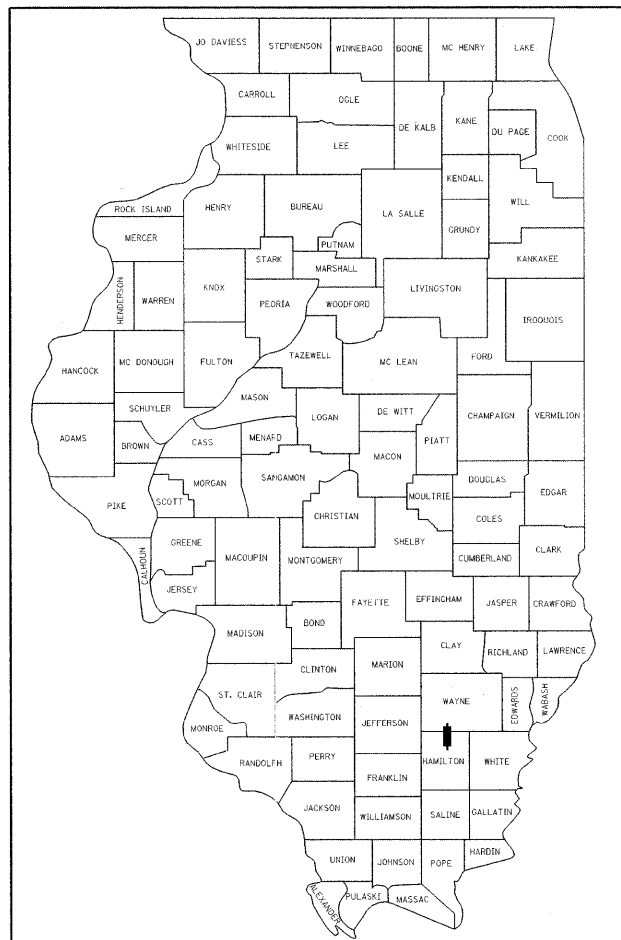
**PROPOSED
HIGHWAY PLANS**

FAP ROUTE 776 (IL ROUTE 242)
SECTION (102)B-1
PROJECT NO. *BRF-0776(026)*
HAMILTON COUNTY
C-99-041-07
STRUCTURE REPLACEMENT OVER
SHELTON CREEK

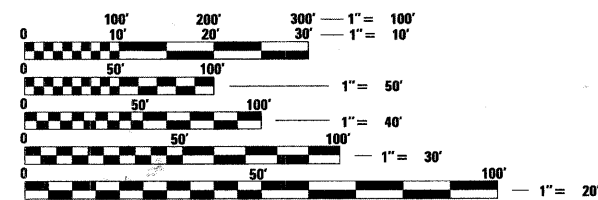
FOR INDEX OF SHEETS, SEE SHEET NO. 2
FOR SUMMARY OF QUANTITIES, SEE SHEET NO. 3

TRAFFIC DATA

2007 ADT = 1020
20% TRUCKS
POSTED SPEED 55 MPH



LOCATION OF SECTION INDICATED THUS: -



CROUCH TOWNSHIP

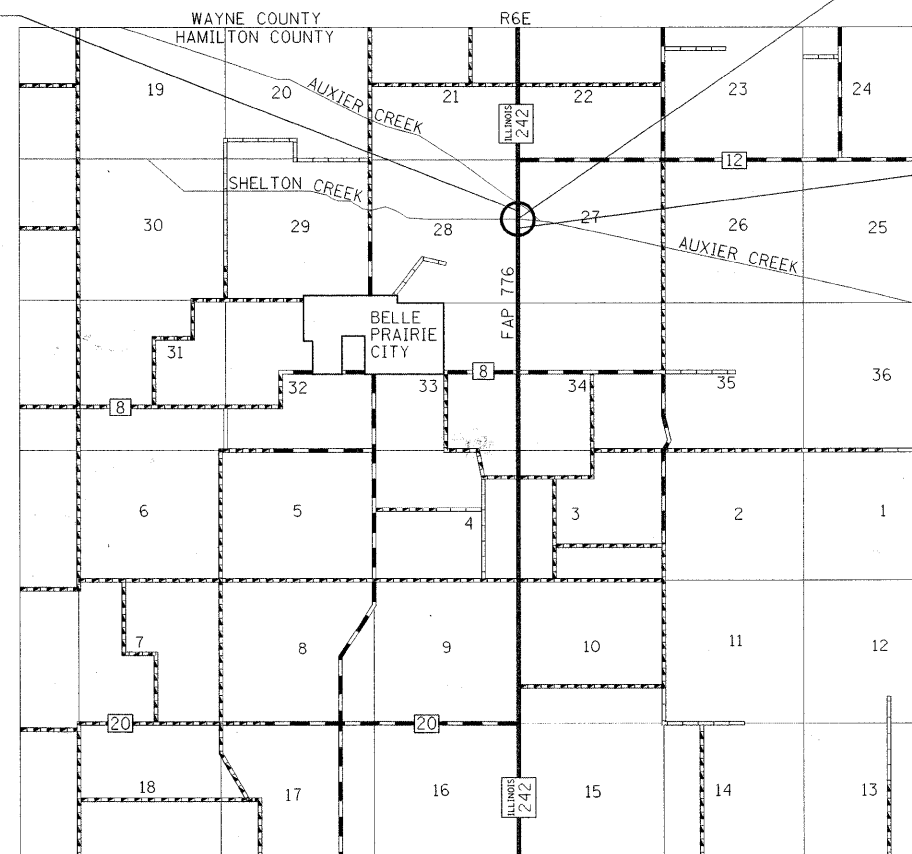
FULL SIZE PLANS HAVE BEEN PREPARED USING STANDARD ENGINEERING SCALES. REDUCED SIZED PLANS WILL NOT CONFORM TO STANDARD SCALES. IN MAKING MEASUREMENTS ON REDUCED PLANS, THE ABOVE SCALES MAY BE USED.

J.U.L.I.E.
JOINT UTILITY LOCATION INFORMATION FOR EXCAVATION
1-800-892-0123
OR 811

PROJECT ENGINEER DAVID PICHE, (618) 549-2171

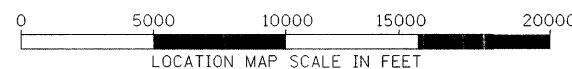
CONTRACT NO. 78016

PROJECT BEGINS
STA. 468 + 06



PROPOSED BRIDGE
OVER SHELTON CREEK
STRUCTURE NO. 033-0053
THREE SPAN STEEL WIDE
FLANGE BEAM BRIDGE
118' 0" BK TO BK ABUTMENTS
32' 0" CLEAR WIDTH
10 DEGREE LEFT AHEAD SKEW
CL STRUCTURE STA 470 + 76.00

PROJECT ENDS
STA. 474 + 18



ROADWAY LENGTH = 464 FT
BRIDGE LENGTH = 148 FT

NET LENGTH OF PROJECT = 612 FT
GROSS LENGTH OF PROJECT = 612 FT

PLANS PREPARED BY:
JACOBS ENGINEERING GROUP INC.
501 NORTH BROADWAY
ST. LOUIS, MISSOURI 63102

STATE OF ILLINOIS
DEPARTMENT OF TRANSPORTATION
DIVISION OF HIGHWAYS

SUBMITTED *Jan 27* 20 *09*

Mary C. Romie
DEPUTY DIRECTOR OF HIGHWAYS, REGION ENGINEER

March 27, 20 09
Charles J. Ingersoll
ENGINEER OF DESIGN AND ENVIRONMENT

March 27, 20 09
Christine M. Reed
DIRECTOR OF HIGHWAYS, CHIEF ENGINEER



Todd A. Welz
SIGNATURE
DATE *11/15/09*
LICENSE EXPIRES: *11/30/09*

**PRINTED BY THE AUTHORITY
OF THE STATE OF ILLINOIS**