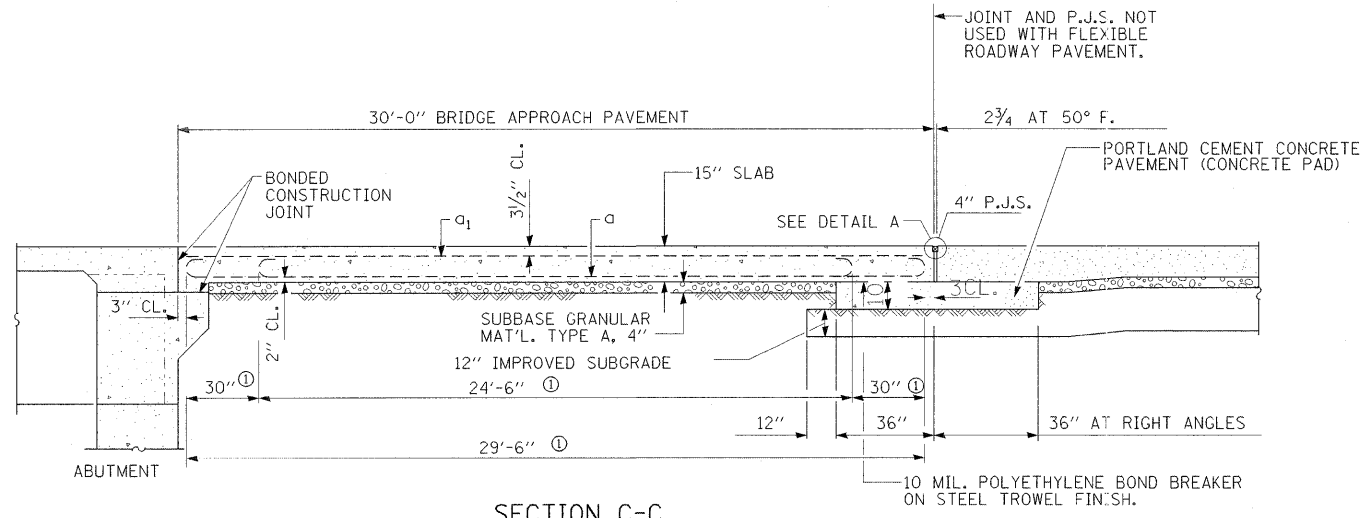


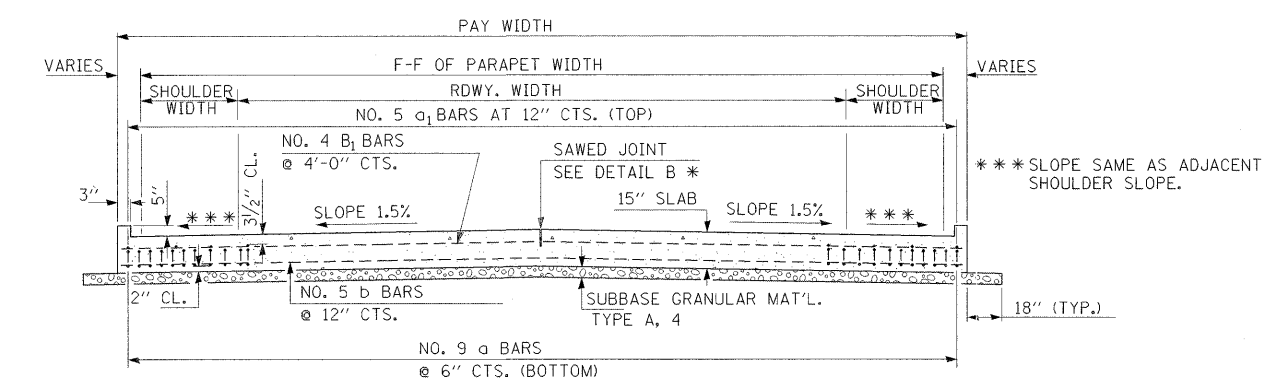
GENERAL NOTES

THICKNESS-T=THICKNESS OF PAVEMENT.
 SEE STANDARD 421001 FOR REINFORCEMENT DETAILS NOT SHOWN.
 SEE STANDARD 420001 FOR JOINT DETAILS NOT SHOWN.
 ALL DIMENSIONS ARE IN INCHES UNLESS OTHERWISE SHOWN.



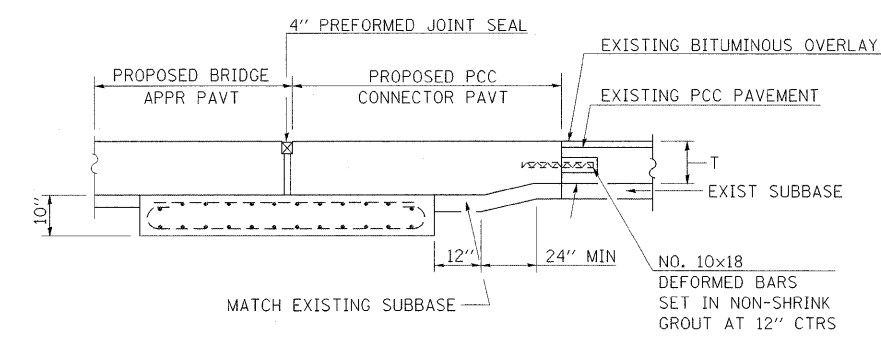
SECTION C-C

① STAGGER NO. 9 A BARS AS SHOWN ON PLAN - FULL WIDTH

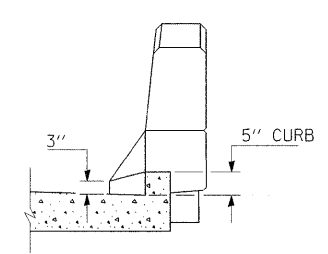


SECTION D-D

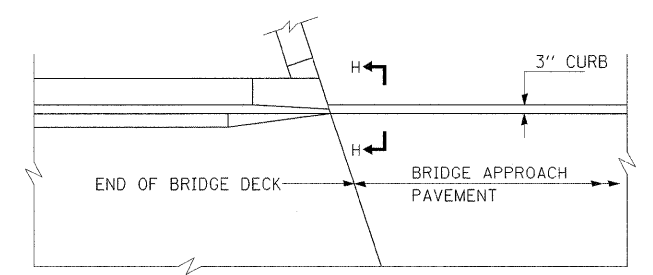
(SEE PLAN FOR DIMENSIONS NOT SHOWN)



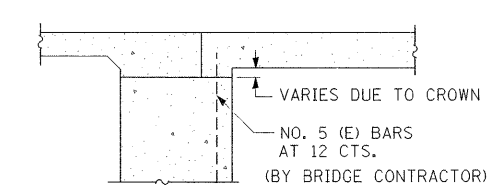
SECTION G-G - RIGID PAVEMENT



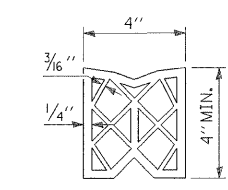
SECTION H - H



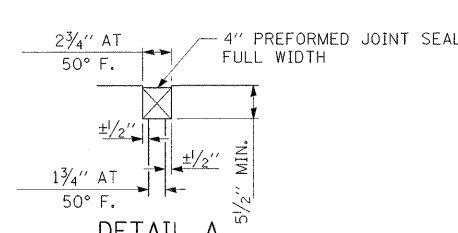
PARAPET TO CURB TRANSITION INTEGRAL ABUTMENT



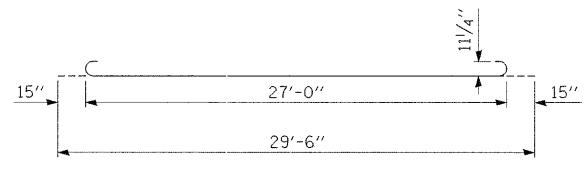
SECTION E-E (INTEGRAL ABUTMENTS)



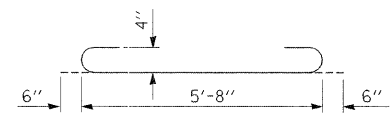
PREFORMED JOINT SEAL



DETAIL A



BAR a



BAR a2

DESIGN STRESSES

FY = 60,000 P.S.I.
 F'C = 3,500 P.S.I.
 N = 8.5

FILE NAME = d978016-shr-details01.dgn	USER NAME = weaverlg	DESIGNED - APF	REVISED -	STATE OF ILLINOIS DEPARTMENT OF TRANSPORTATION	DETAILS - BRIDGE APPROACH SLAB	F.A. RTE. 776	SECTION (102)B-1	COUNTY HAMILTON	TOTAL SHEETS 53	SHEET NO. 18	
		DRAWN - APF	REVISED -			CONTRACT NO. 78016					
		CHECKED - RSB	REVISED -			FED. ROAD DIST. NO. ILLINOIS FED. AID PROJECT					
		DATE - 1/15/2009	REVISED -			SHEET NO. 1 OF 1 SHEETS					