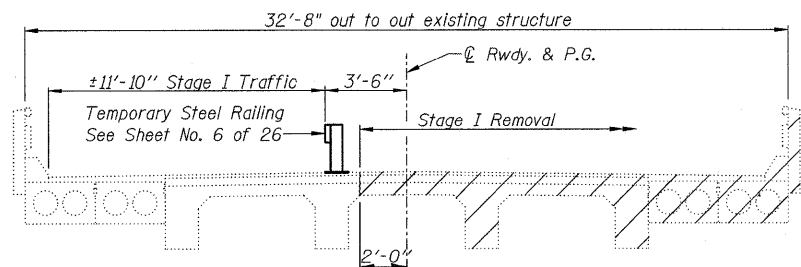
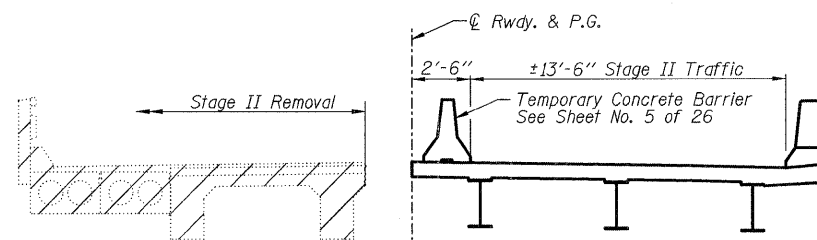


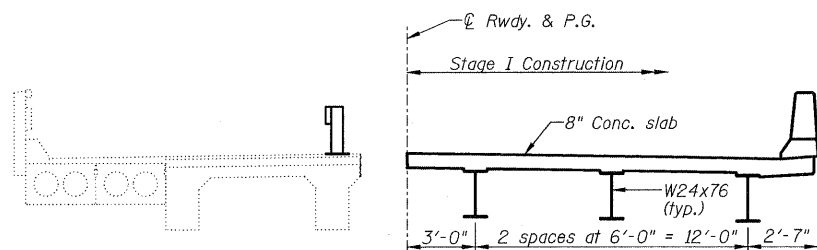
STATE OF ILLINOIS
DEPARTMENT OF TRANSPORTATION



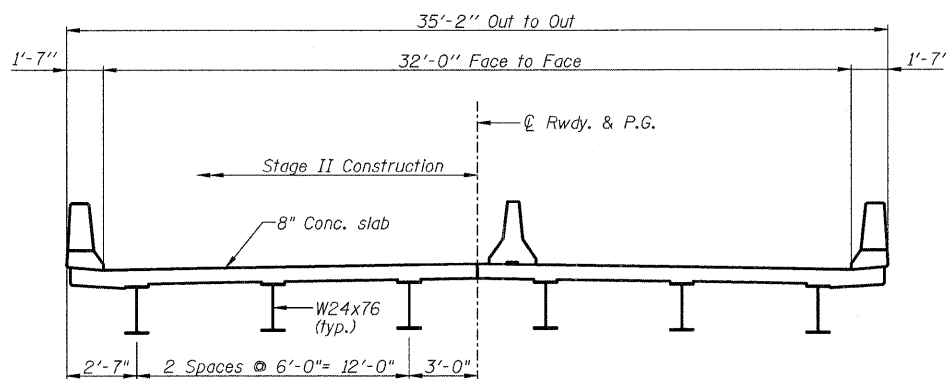
STAGE I REMOVAL



STAGE II REMOVAL



STAGE I CONSTRUCTION



STAGE II CONSTRUCTION

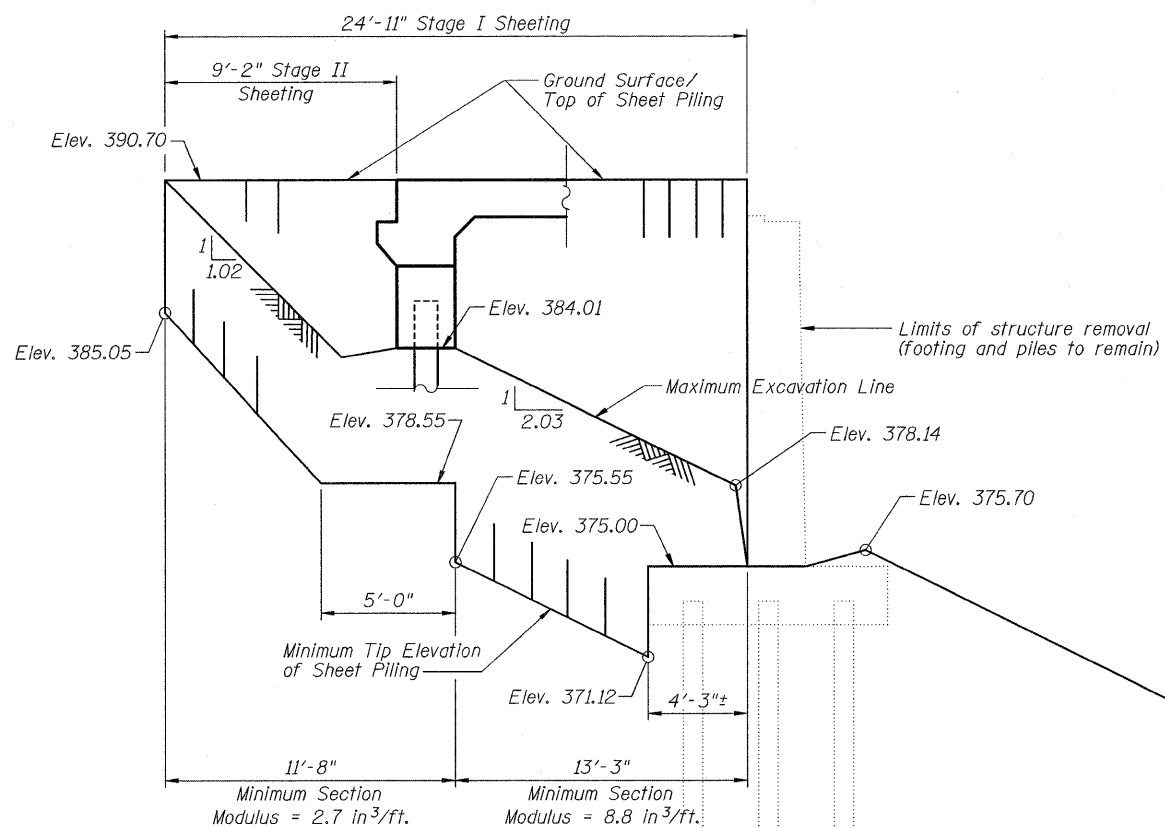
Notes:

Excavation behind existing abutment walls shall be performed to balance front and back soil pressure before removing the existing superstructure. The Contractor shall sawcut the upper portion of the existing abutment at the stage removal line before Stage I removal to ensure the remaining portion will not be prematurely damaged.

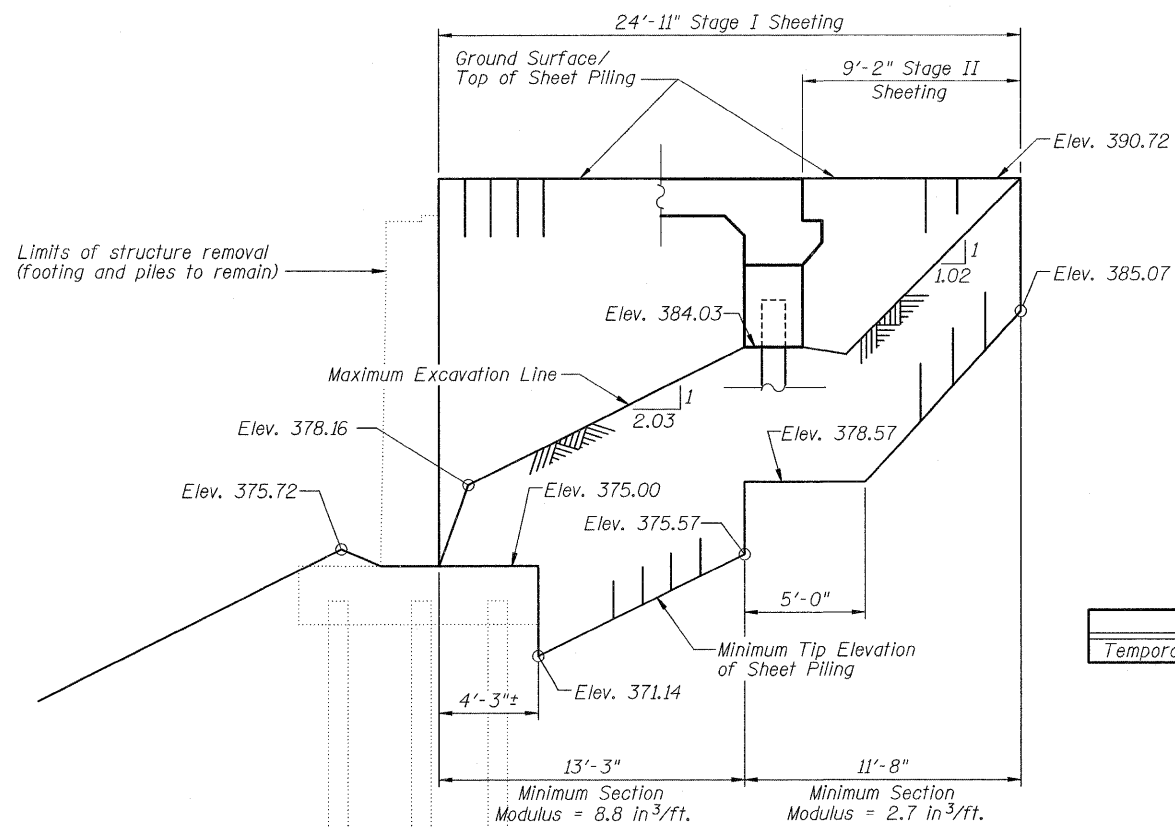
If the Contractor chooses to alter the temporary cantilevered sheet piling design requirements shown on the plans, a design submittal including plan details and calculations will be required for review and acceptance by the Engineer.

The Contractor shall connect the first sheet to the existing abutment wall to ensure stability of sheets driven to the top of the existing footing. This connection shall be reviewed and accepted by the Engineer and included in the cost for Temporary Sheet Piling.

Stage Construction Sections are shown Looking South.



TEMPORARY SHEET PILING
(at North Abutment)



TEMPORARY SHEET PILING
(at South Abutment)

BILL OF MATERIAL

ITEM	UNIT	TOTAL
Temporary Sheet Piling	Sq. Ft.	686

STAGE CONSTRUCTION DETAILS
IL ROUTE 242 OVER
SHELTON CREEK
STATION 470+76

DESIGNED - C.J.W.
CHECKED - FRK
DRAWN - J.L.R.
CHECKED - C.J.W.

SHEET NO. 4	F.A.P. RTE.	SECTION	COUNTY	TOTAL SHEETS	SHEET NO.
	776	(102)B-1	HAMILTON	53	31
26 SHEETS	S.N. 033-0053		CONTRACT NO. 78016		
	FED. ROAD DIST. NO.	ILLINOIS	FED. AID PROJECT		

