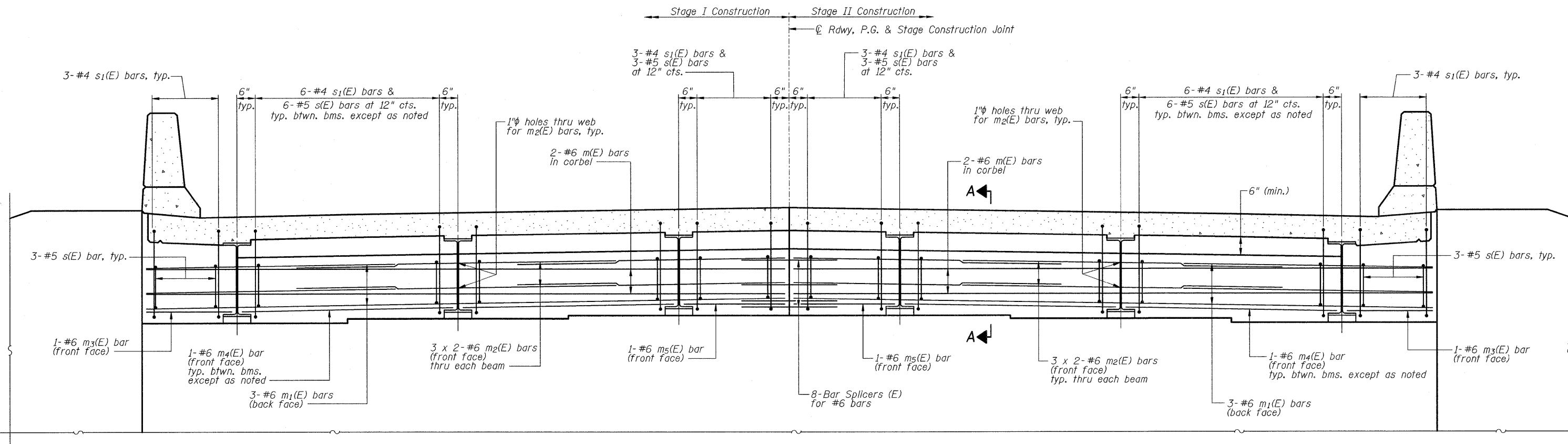
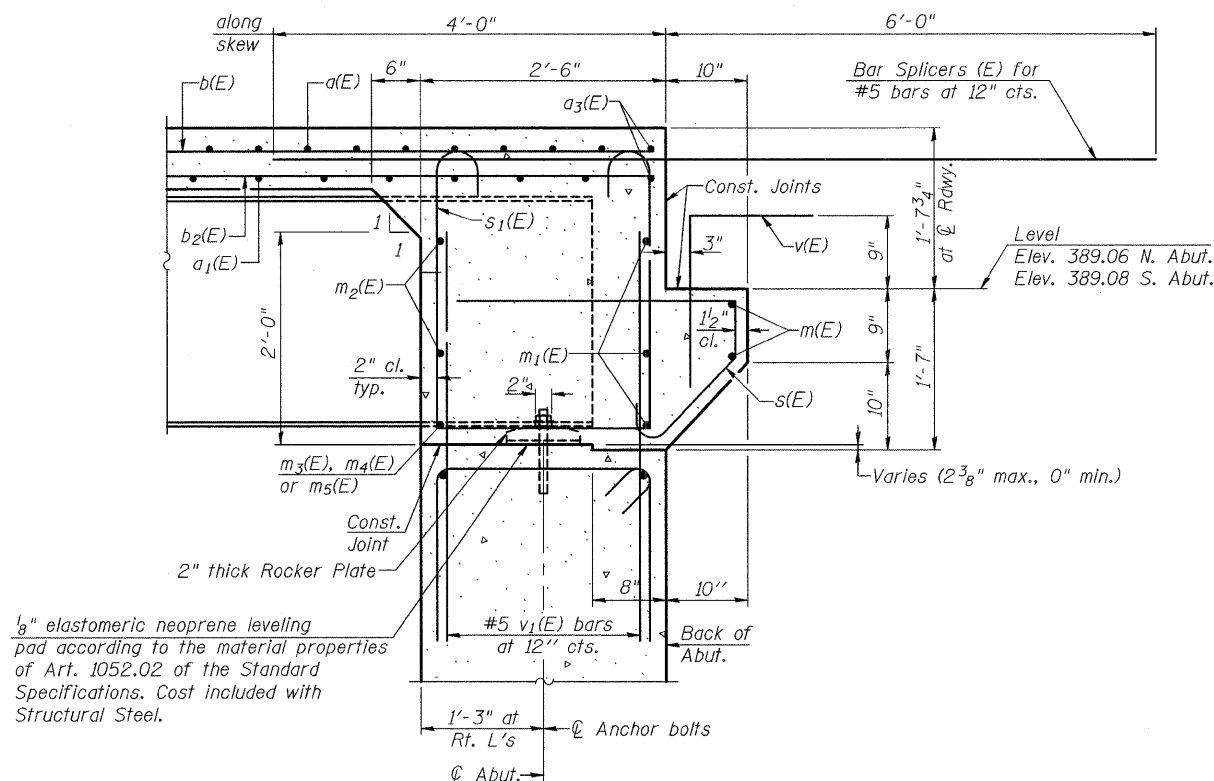


STATE OF ILLINOIS
DEPARTMENT OF TRANSPORTATION



DIAPHRAGM ELEVATION AT ABUTMENT
(North Abutment shown, looking North. South Abutment similar.)



Notes:
Reinforcement bars in diaphragm are billed with superstructure on sheet 14 of 26.
Concrete in diaphragm is included with Concrete Superstructure on sheet 14 of 26.
For details of bars s(E) & s₁(E) see sheet 14 of 26.
The s(E) and s₁(E) bars shall be placed parallel to the structural steel beams. Spacing for these bars shall be at right angles to the beams.

MIN. BAR LAP
(Diaphragms)
#6 bar = 2'-9"

DESIGNED - NK
CHECKED - CJW
DRAWN - JLR
CHECKED - CJW

SECTION A-A
Dimensions at right angles to abutment, except as shown.

DIAPHRAGM DETAILS
IL ROUTE 242 OVER
SHELTON CREEK
STATION 470+76

SHEET NO. 15	F.A.P. RTE.	SECTION	COUNTY	TOTAL SHEETS	SHEET NO.
	776	(102)B-1	HAMILTON	53	42
26 SHEETS	S.N. 033-0053		CONTRACT NO. 78016		
FED. ROAD DIST. NO.		ILLINOIS	FED. AID PROJECT		

JACOBS