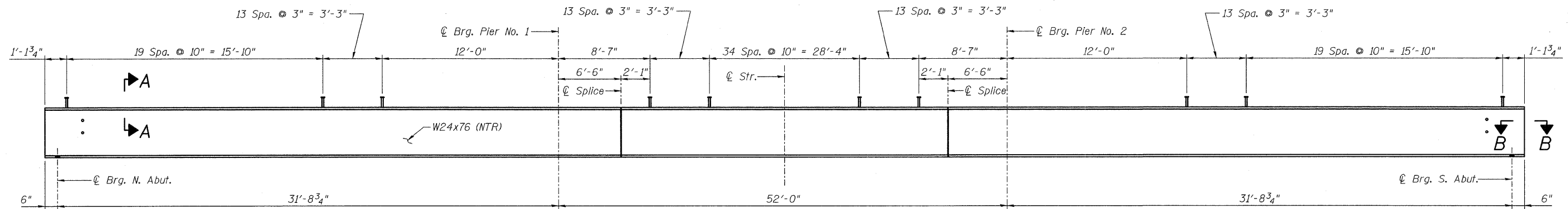


STATE OF ILLINOIS
DEPARTMENT OF TRANSPORTATION

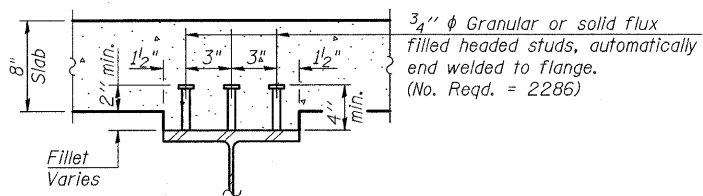


BEAM ELEVATION
(6 Required)

TOP OF BEAM ELEVATIONS

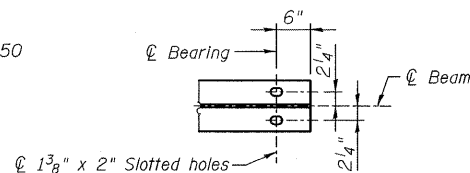
Location	Beam 1	Beam 2	Beam 3	Beam 4	Beam 5	Beam 6
℄ Brg. at North Abut.	389.68	389.79	389.88	389.88	389.79	389.68
℄ Brg. at Pier 1	389.69	389.79	389.89	389.89	389.79	389.68
℄ North Splice	389.69	389.80	389.89	389.89	389.80	389.69
℄ South Splice	389.70	389.80	389.90	389.90	389.80	389.69
℄ Brg. at Pier 2	389.70	389.81	389.90	389.90	389.81	389.70
℄ Brg. at South Abut.	389.70	389.81	389.91	389.91	389.81	389.70

Notes:
Top of Beam Elevations shown for fabrication only.



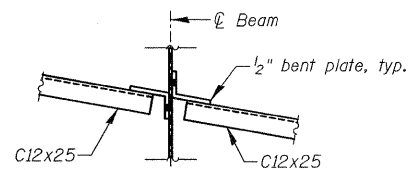
SECTION A-A

Notes:
Load carrying components designated "NTR" shall conform to the Supplemental Requirements for Notch Toughness, Zone 2.
Structural steel shall be AASHTO M270 Grade 50 except as noted.

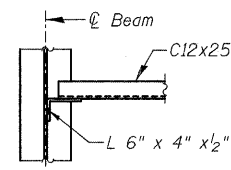


SECTION B-B

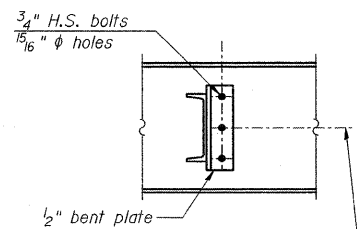
(S. Abut. end shown,
N. Abut. end similar)



SECTION C-C

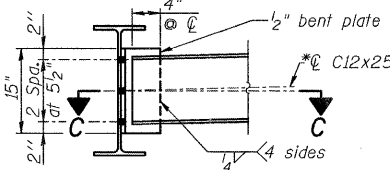


SECTION D-D

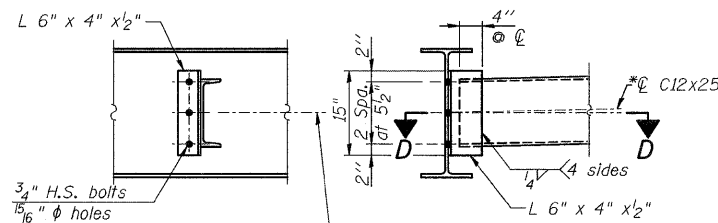


*℄ Beam web and
℄ C12x25 at end
of channel

INTERIOR DIAPHRAGM • PIERS



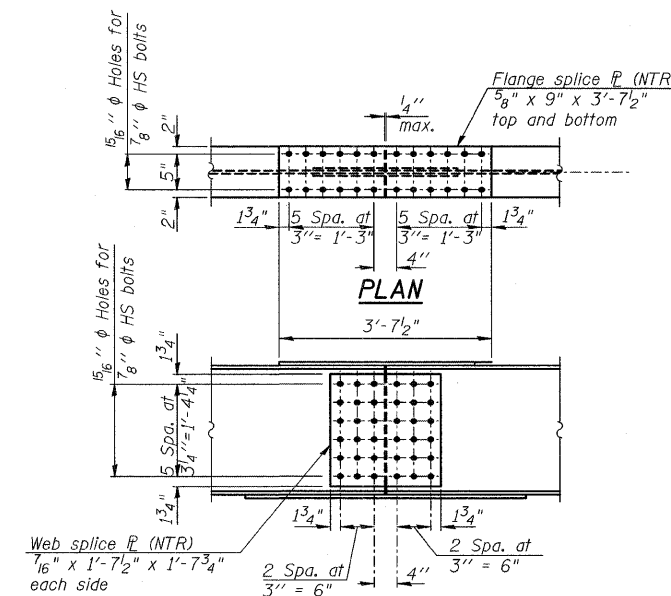
Note: Opposite side diaphragm
not shown for clarity.



*℄ Beam web and
℄ C12x25 at end
of channel

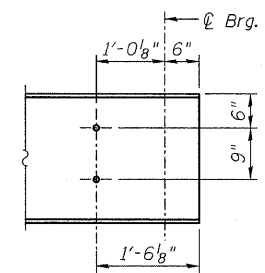
INTERIOR DIAPHRAGM

Note:
Two hardened washers required for each
set of oversized holes.
*Alternate channel C12x30 is permitted to facilitate
material acquisition. Calculated weight of
structural steel is based on the lighter section.
The alternate, if utilized, shall be provided at
no additional cost to the Department.
See sheet 16 of 26 for location of diaphragms.



**ELEVATION
SPLICE DETAIL**

(12 Required)



END OF GIRDER ELEVATION

(S. Abut. end shown,
N. Abut. end similar)

**BEAM DETAILS
IL ROUTE 242 OVER
SHELTON CREEK
STATION 470+76**

DESIGNED - CJW
CHECKED - MJC/DBB
DRAWN - JLR
CHECKED - CJW

SHEET NO. 17 26 SHEETS	F.A.P. RTE. 776	SECTION (102)B-1	COUNTY HAMILTON	TOTAL SHEETS 53	SHEET NO. 44
	S.N. 033-0053		CONTRACT NO. 78016		
FED. ROAD DIST. NO. ILLINOIS FED. AID PROJECT					

JACOBS