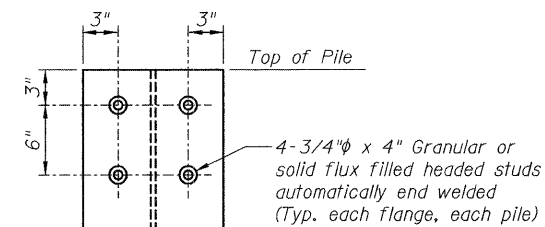
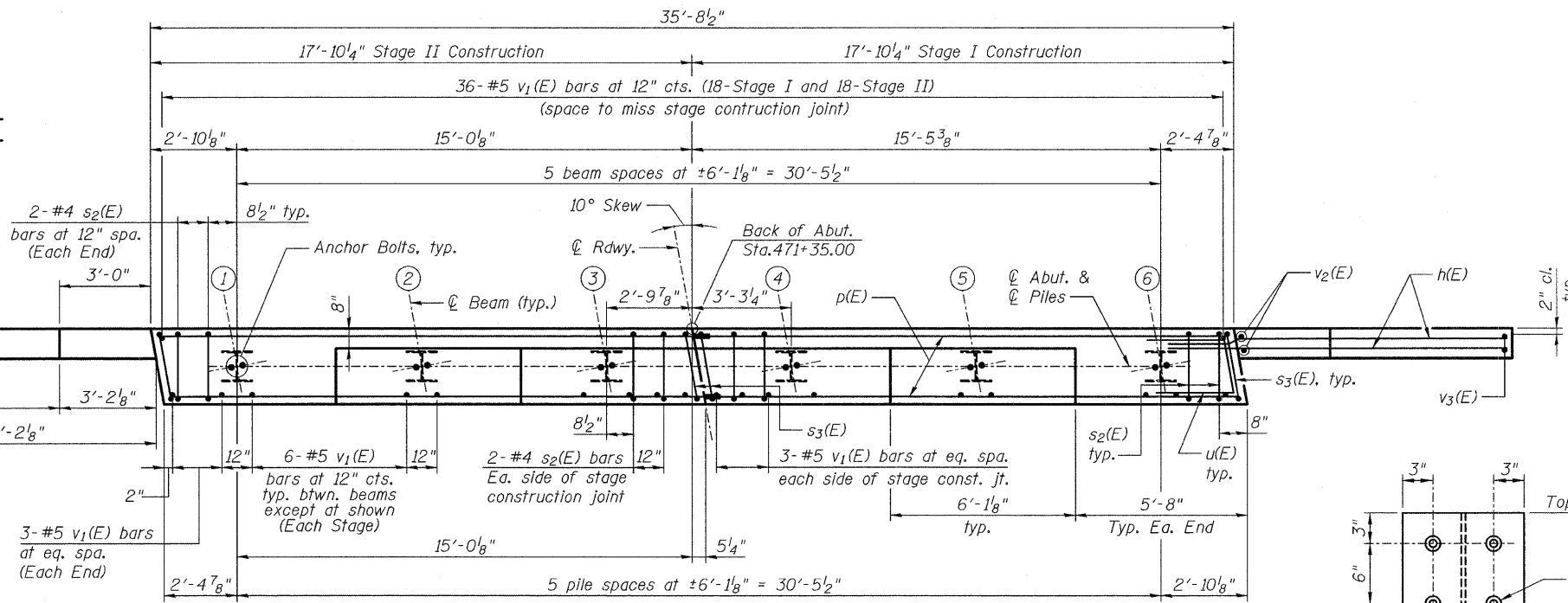
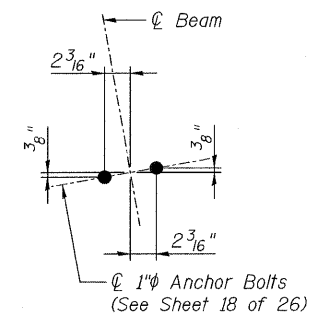
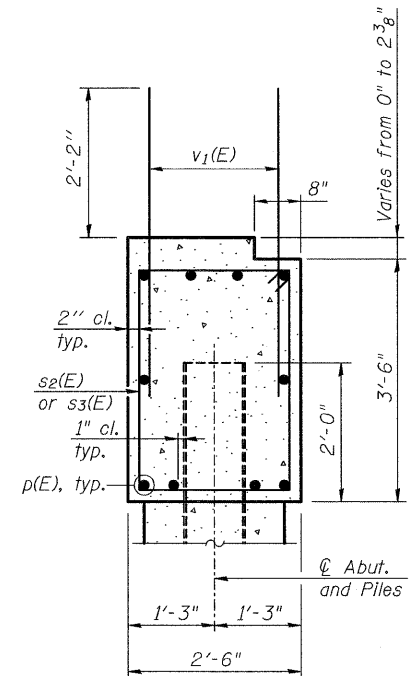
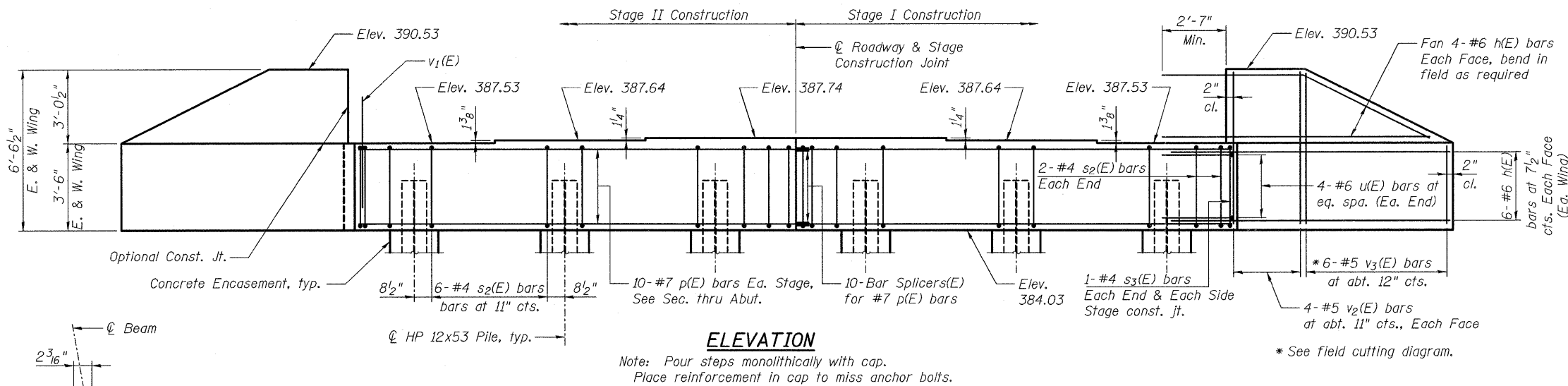


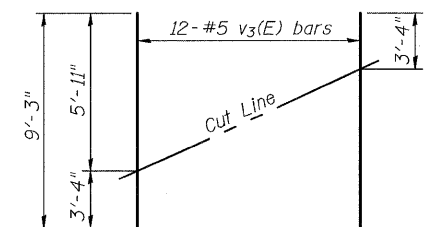
STATE OF ILLINOIS
DEPARTMENT OF TRANSPORTATION



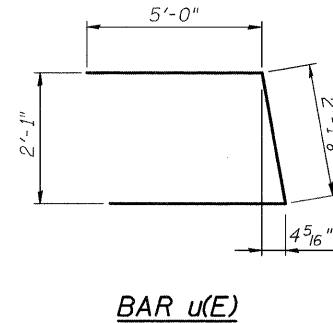
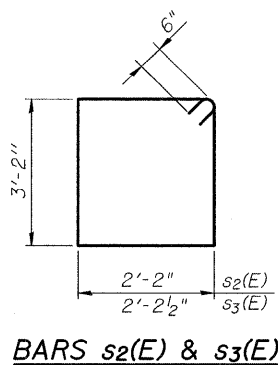
BILL OF MATERIAL

Bar	No.	Size	Length	Shape
h(E)	40	#6	12'-1"	—
p(E)	20	#7	17'-7"	—
s ₂ (E)	32	#4	11'-8"	□
s ₃ (E)	4	#4	11'-9"	□
u(E)	8	#6	12'-1"	∩
v ₁ (E)	72	#5	4'-4"	—
v ₂ (E)	16	#5	6'-3"	—
v ₃ (E)	12	#5	9'-3"	—
Structure Excavation			Cu. Yd.	76.7
Concrete Structures			Cu. Yd.	15.5
Stud Shear Connectors			Each	48
Reinforcement Bars, Epoxy Coated			Pound	2,420
Bar Splicers			Each	10
Furnishing Steel Piles, HP 12x53			Foot	280
Driving Piles			Foot	280
Test Pile Steel HP 12x53			Each	1
Pile Shoes			Each	6
Concrete Encasement			Cu. Yd.	2.1

For details of Bar Splicers, see sheet 24 of 26.
For details of piles and Concrete Encasement, see sheet 23 of 26.



Order v₃(E) full length. Cut as shown and use remainder of bars in opposite face.



PILE DATA

Type: Steel HP 12x53
Nominal Required Bearing: 419 kips
Factored Resistance Available: 209 kips
Est. Length: 56 ft
No. Production Piles: 5
No. Test Piles: 1

DESIGNED	-	NK
CHECKED	-	CJW
DRAWN	-	CLS
CHECKED	-	CJW

SHEET NO. 20 26 SHEETS	F.A.P. RTE. 776	SECTION (102)B-1	COUNTY HAMILTON	TOTAL SHEETS 53	SHEET NO. 47
	S.N. 033-0053		CONTRACT NO. 78016		
FED. ROAD DIST. NO. ILLINOIS FED. AID PROJECT					

