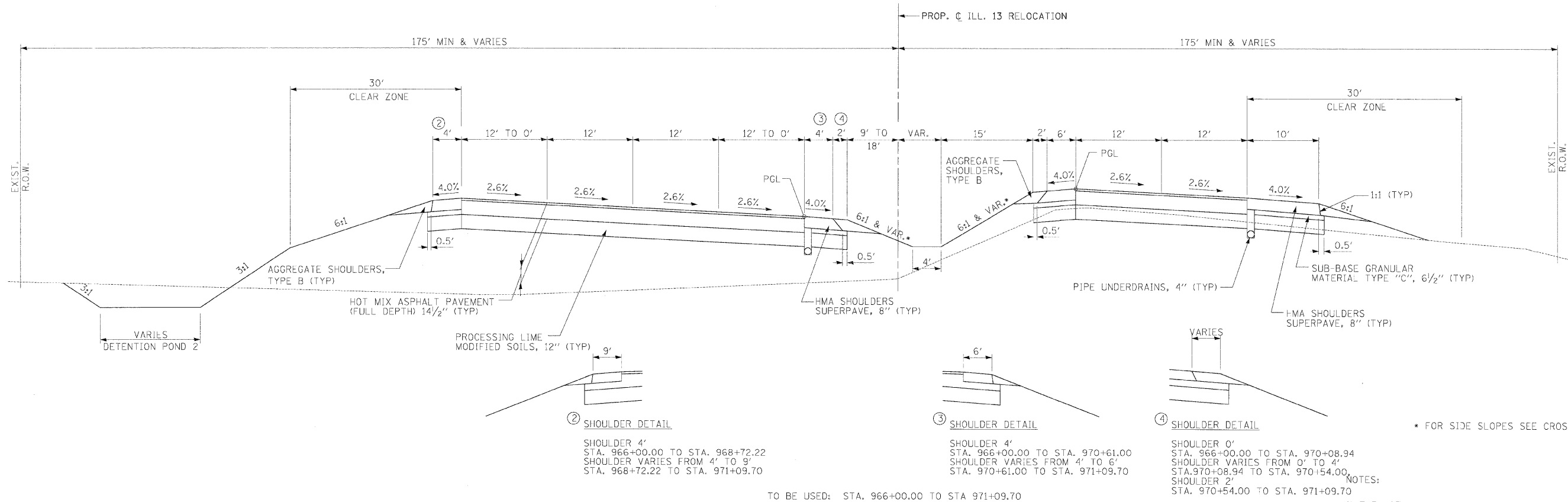
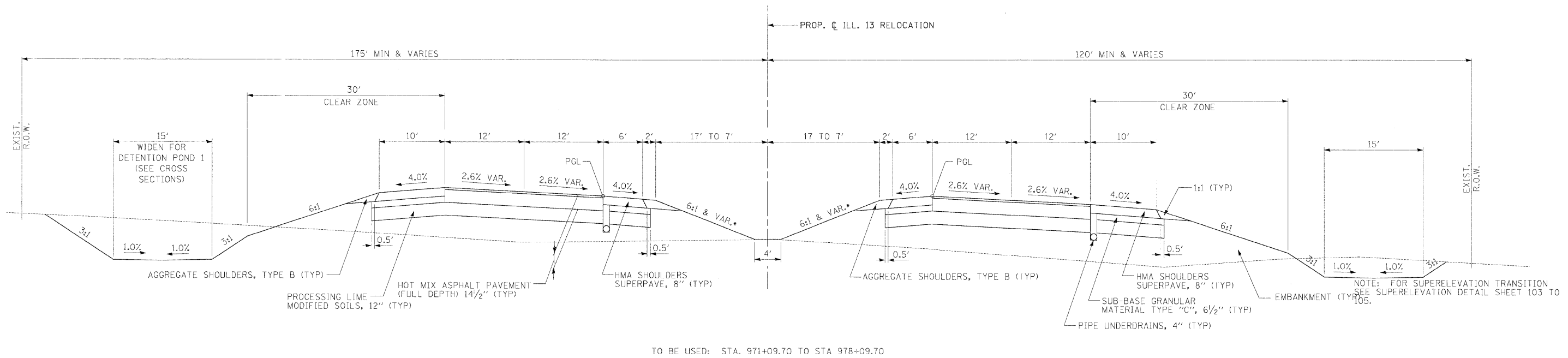


FAP R.T.E.	SECTION	COUNTY	TOTAL SHEETS	SHEET NO.
331	3-2, BX-1, 4-2	SALINE	220	13
STA.		TO STA.		
FED. ROAD DIST. NO.		ILLINOIS FED. AID PROJECT		

TYPICAL SECTIONS
PROPOSED ILL. 13 RELOCATION



② SHOULDER DETAIL

SHOULDER 4'
STA. 966+00.00 TO STA. 968+72.22
SHOULDER VARIES FROM 4' TO 9'
STA. 968+72.22 TO STA. 971+09.70

③ SHOULDER DETAIL

SHOULDER 4'
STA. 966+00.00 TO STA. 970+61.00
SHOULDER VARIES FROM 4' TO 6'
STA. 970+61.00 TO STA. 971+09.70

④ SHOULDER DETAIL

SHOULDER 0'
STA. 966+00.00 TO STA. 970+08.94
SHOULDER VARIES FROM 0' TO 4'
STA. 970+08.94 TO STA. 970+54.00
SHOULDER 2'
STA. 970+54.00 TO STA. 971+09.70

* FOR SIDE SLOPES SEE CROSS-SECTIONS

NOTES:
1) THE HOT MIX ASPHALT PAVEMENT (FULL DEPTH) WILL INCLUDE 1.5" SUPERPAVE SURFACE COURSE, MIX E

NOT TO SCALE

CHECKED BY: B.W. PLOT DATE: 2/22/2009
DRAWN BY: DMS PLOT SCALE: 1/2"=1'-0"

M:\PROJECTS\PROJECTS\ROADWAY\COMMON\Reference Files
Active File: 1304_1305.dgn