

AP. RTE.	SECTION	COUNTY	TOTAL SHEETS	SHEET NO.
331	3-2, 8X-1, 4-2	SALINE	220	29
STA.		TO STA.		
FED. ROAD DIST. NO.		ILLINOIS FED. AID PROJECT		

CURVE	P.I. STATION	Δ	D	T	L	R	M	CHORD
452	1078+72.72	28° 04' 05"	7° 50' 55"	182.47'	357.61'	730.00'	21.79'	354.05'
453	1087+85.30	73° 28' 29"	7° 16' 49"	587.41'	1,009.23'	787.00'	156.31'	941.48'
2500	205+99.16	39° 05' 45"	14° 19' 26"	142.02'	272.94'	400.00'	23.06'	267.68'

STATION	NORTHING	EASTING	REMARKS
1078+72.72	391,014.82	928,008.40	P.I. CURVE 452 ILL. 13 RELOCATION
1076+90.25	391,144.71	927,880.24	P.C. CURVE 452 ILL. 13 RELOCATION
1080+47.86	390,839.91	928,060.36	P.T. CURVE 452 ILL. 13 RELOCATION
1087+85.30	390,133.01	928,270.38	P.I. CURVE 453 ILL. 13 RELOCATION
1081+97.89	390,696.09	928,103.09	P.C. CURVE 453 ILL. 13 RELOCATION
1092+07.12	390,133.22	928,857.79	P.T. CURVE 453 ILL. 13 RELOCATION
1093+96.24	390,133.29	929,046.91	P.O.T. ILL. 13 RELOCATION
205+99.16	390,183.47	927,763.34	P.I. CURVE 2500 OLD ILL. 13
204+57.13	390,196.20	927,621.89	P.C. CURVE 2500 OLD ILL. 13
207+30.07	390,262.80	927,881.14	P.T. CURVE 2500 OLD ILL. 13

N 391,432.95  
E 927,595.04

ALIGNMENT TIE POINT  
STA. 1072+84.98 ILL. 13 RELOCATION =  
STA. 45+84.14 U.S. ROUTE 45

N 391,144.71  
E 927,880.24

ALIGNMENT TIE POINT  
STA. 1076+90.25 ILL. 13 RELOCATION

N 390,839.91  
E 928,060.36

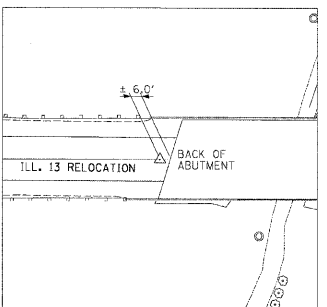
ALIGNMENT TIE POINT  
STA. 1080+47.86 ILL. 13 RELOCATION

N 390,696.09  
E 928,103.09

ALIGNMENT TIE POINT  
STA. 1081+97.89 ILL. 13 RELOCATION

N 390,133.22  
E 928,857.79

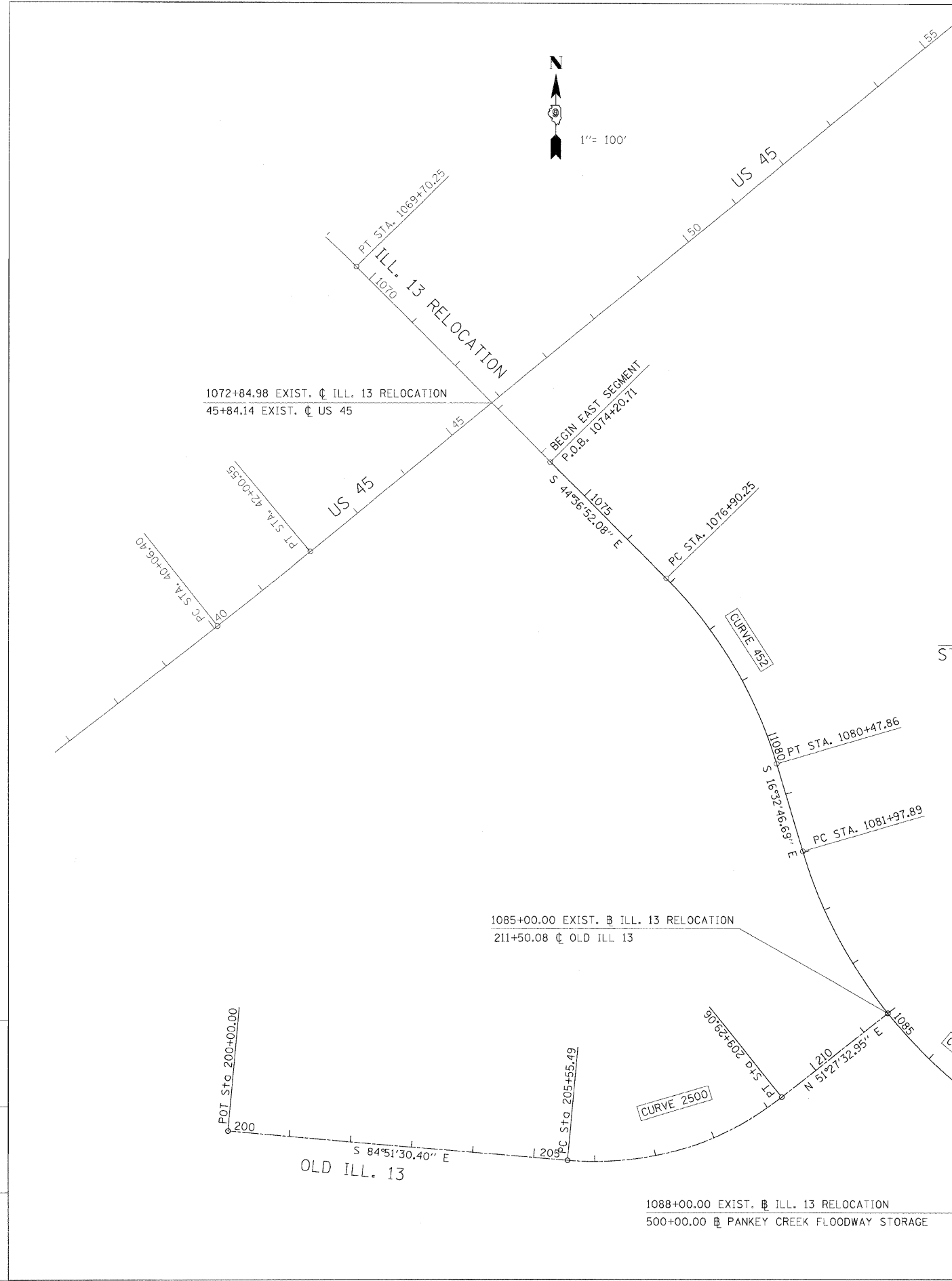
ALIGNMENT TIE POINT  
STA. 1092+07.12 ILL. 13 RELOCATION



ALIGNMENT TIE POINT  
STA. 1093+96.24 ILL. 13 RELOCATION

CHECKED BY: PLOT DATE 2/22/2009  
DRAWN BY: PLOT SCALE 1/100.00

M:\PROJECTS\ROADWAY\COMMON\ACTIVE FILES\03-32766.dgn



**U. S. ROUTE 45  
ALIGNMENT & TIES  
STA. 1074 + 20.71 TO STA. 1093 + 96.24  
ILL. 13 RELOCATION**