

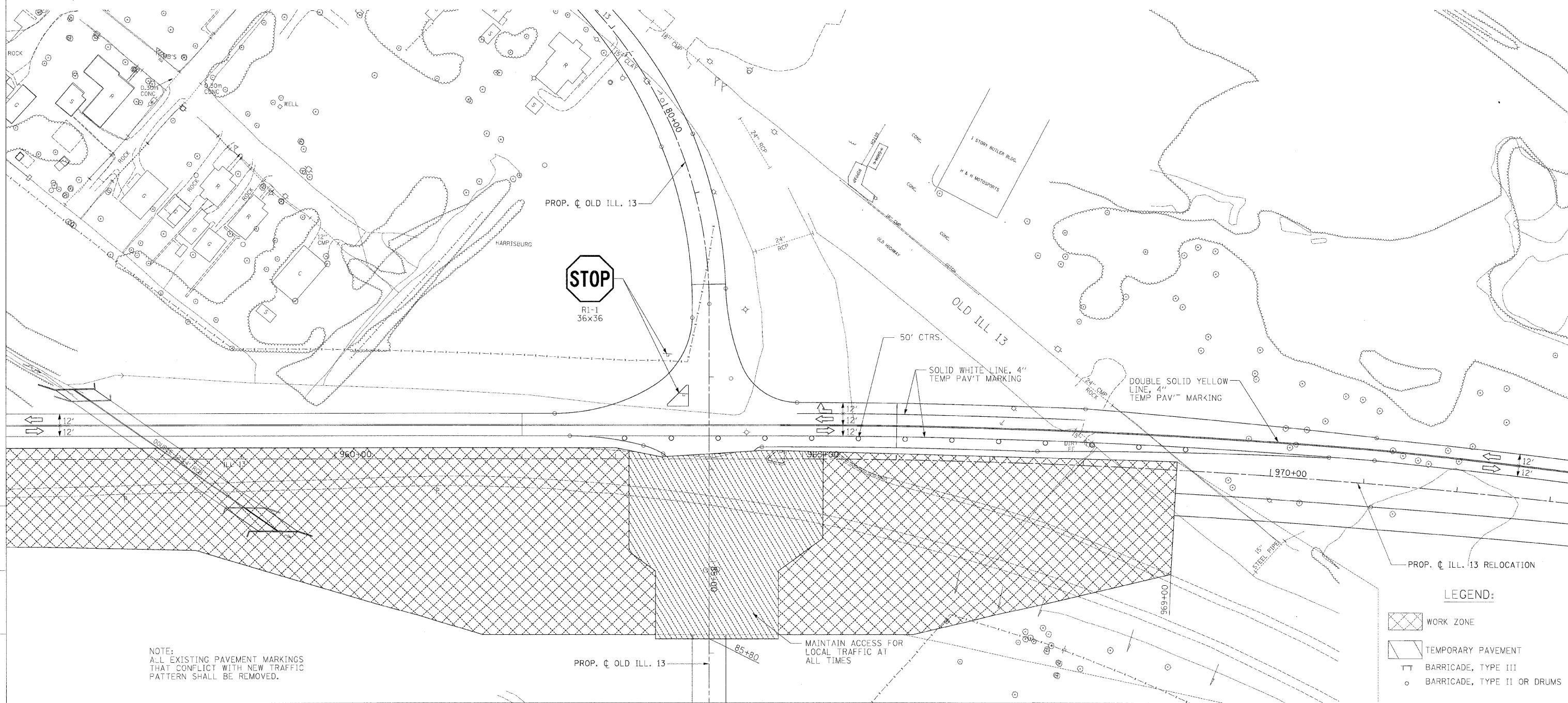
FAP RTE.	SECTION	COUNTY	TOTAL SHEETS	SHEET NO.
331	3-2, BX-1, 4-2	SALINE	220	38

STA.	TO STA.

FED. ROAD DIST. NO.	ILLINOIS	FED. AID PROJECT



CHECKED BY: BJW
 DRAWN BY: DMS
 PLOT DATE: 2/2/2009
 P.L.O. SCALE: 1/4"= 50'



NOTE:
 ALL EXISTING PAVEMENT MARKINGS
 THAT CONFLICT WITH NEW TRAFFIC
 PATTERN SHALL BE REMOVED.

PROP. C ILL. 13 RELOCATION

LEGEND:

- WORK ZONE
- TEMPORARY PAVEMENT
- BARRICADE, TYPE III
- BARRICADE, TYPE II OR DRUMS