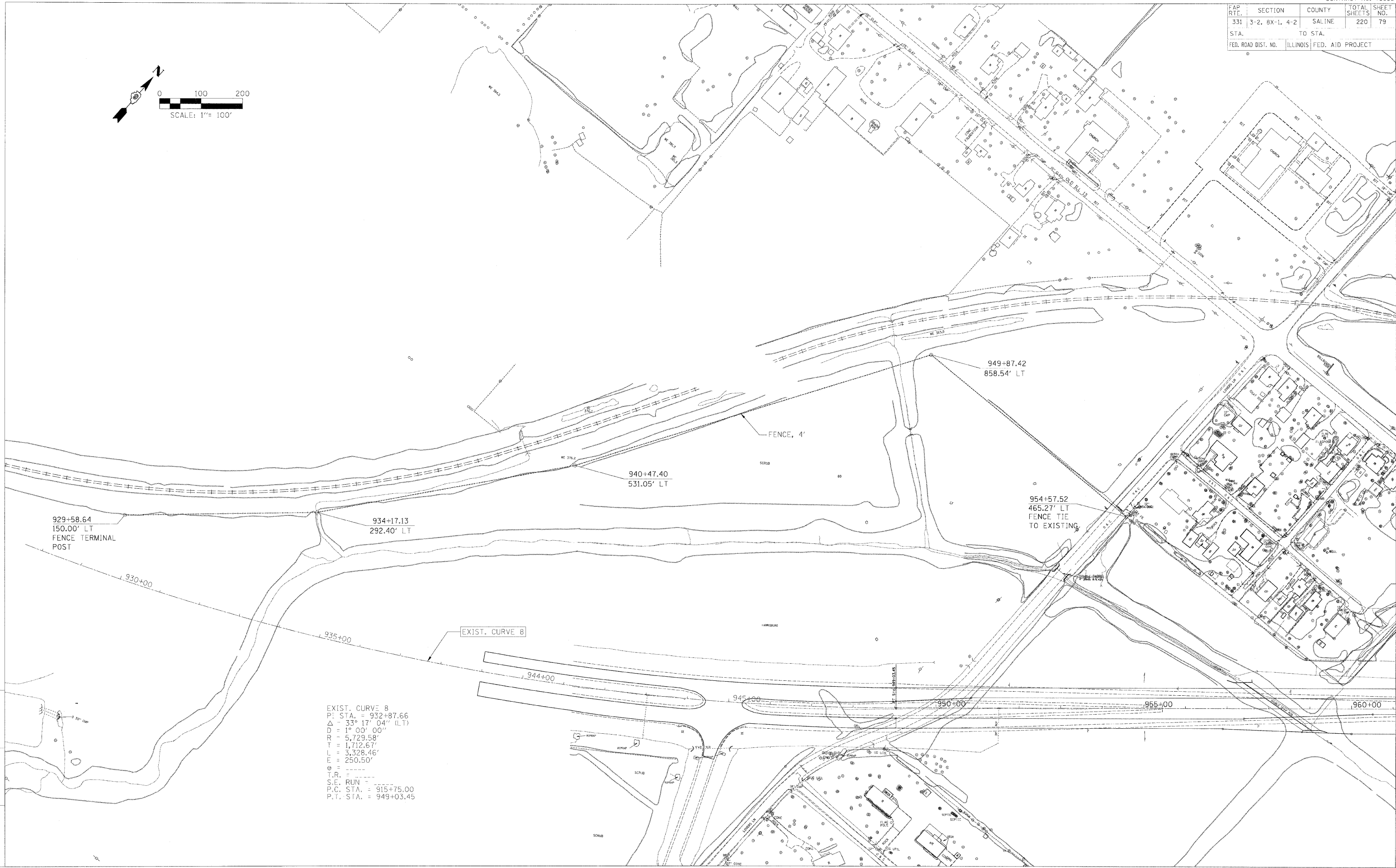


FAP RTE.	SECTION	COUNTY	TOTAL SHEETS	SHEET NO.
331	3-2, 8X-1, 4-2	SALINE	220	79
STA.		TO STA.		
FED. ROAD DIST. NO.		ILLINOIS	FED. AID PROJECT	



929+58.64
150.00' LT
FENCE TERMINAL
POST

934+17.13
292.40' LT

940+47.40
531.05' LT

949+87.42
858.54' LT

954+57.52
465.27' LT
FENCE TIE
TO EXISTING

EXIST. CURVE 8
P.I. STA. = 932+87.66
Δ = 33° 17' 04" (LT)
D = 1° 00' 00"
R = 5,729.58'
T = 1,712.67'
L = 3,328.46'
E = 250.50'
e = ----
T.R. = ----
S.E. RUN = ----
P.C. STA. = 915+75.00
P.T. STA. = 949+03.45

PROJECT: PRO-2526-ROADWAY/COMMONZ
 Active File: Re-fencing Plans
 C:\FENCING\007

CHECKED BY: BJW
 DRAWN BY: DMS
 PLOT DATE: 2/2/2009
 PLOT SCALE: 1/8"=1'