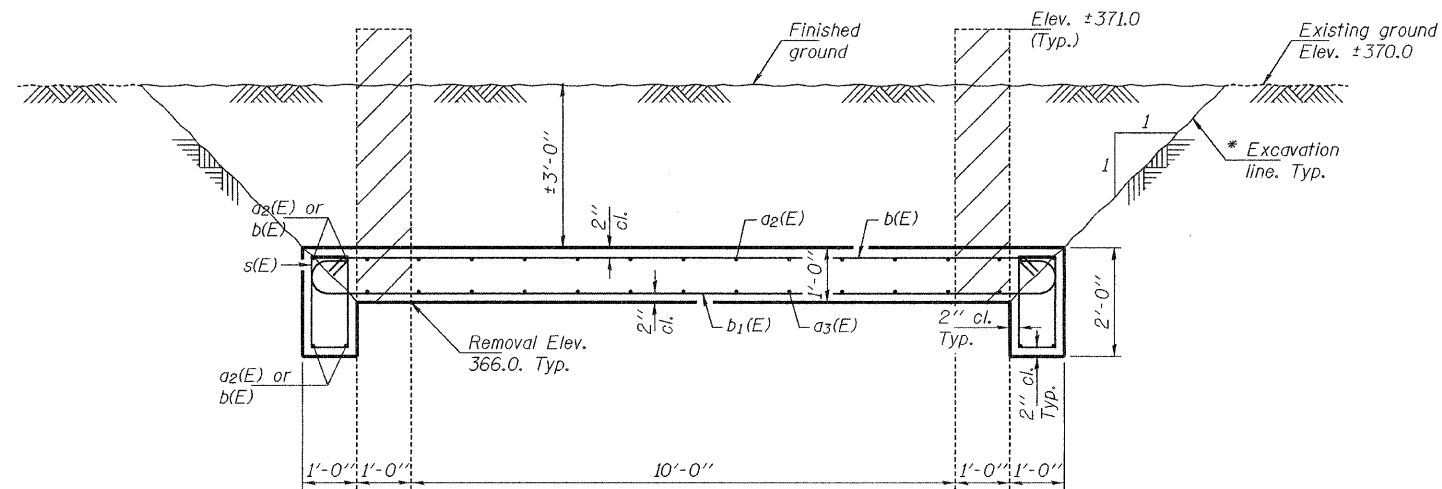
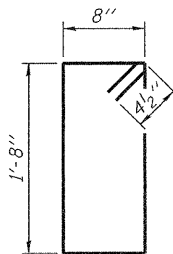


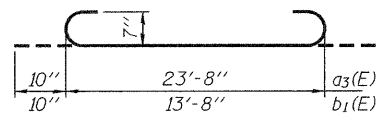
STATE OF ILLINOIS  
DEPARTMENT OF TRANSPORTATION



\* Limits of excavation to be determined in the field.  
Cost Included with Cap Mine Shaft

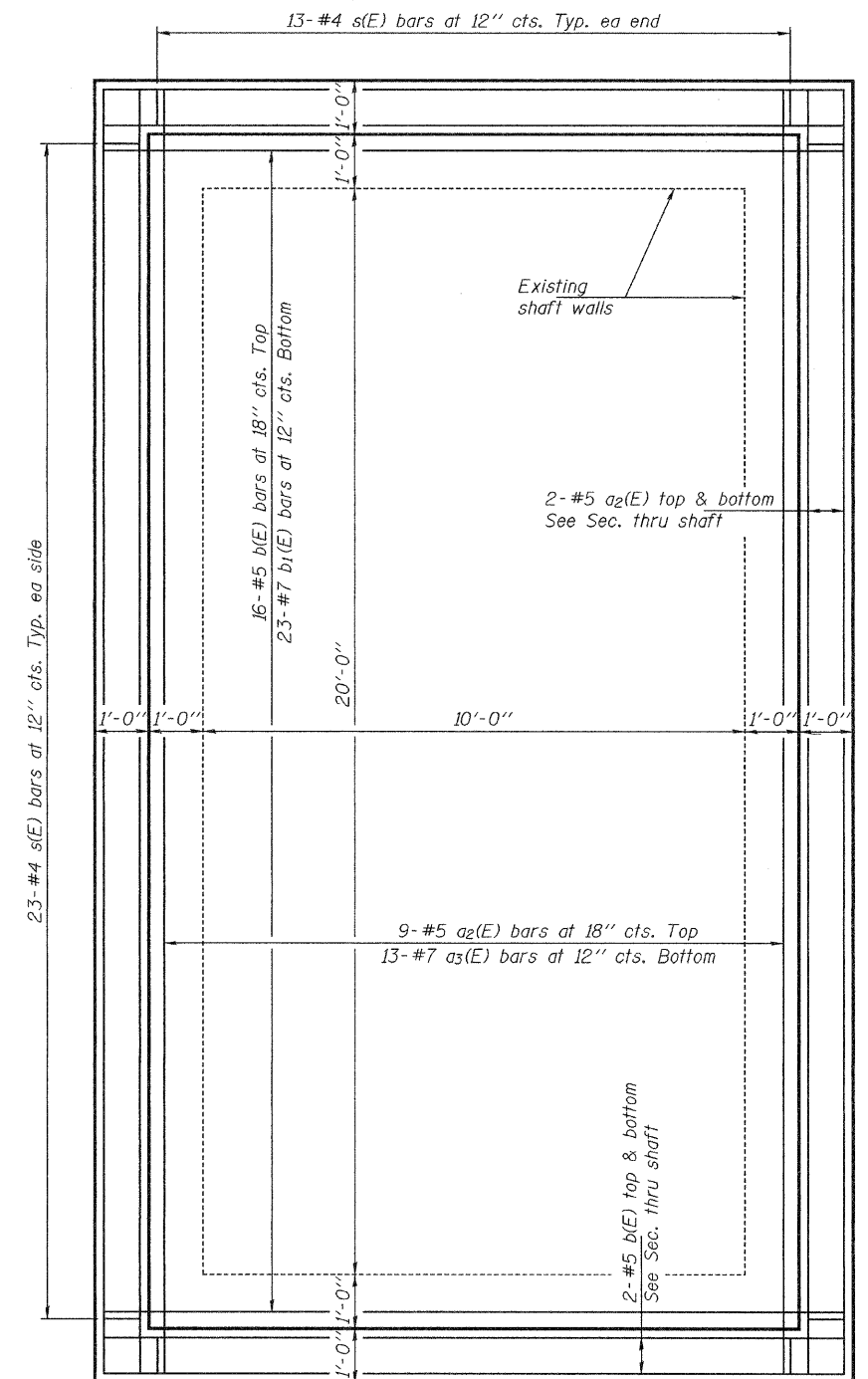


BAR s(E)



BARS a3(E) & b1(E)

SECTION THRU SHAFT  
Hatched areas indicate concrete removal



PLAN

10'-0" X 20'-0" MAIN SHAFT CAP  
STA. 980+00

MATERIAL LIST

(For information only)

Bar	No.	Size	Length	Shape
a2(E)	17	#5	23'-8"	—
a3(E)	13	#7	25'-4"	⌋
b(E)	24	#5	13'-8"	—
b1(E)	23	#7	15'-4"	⌋
s(E)	72	#4	5'-5"	⌋
Concrete Structures		Cu. Yd.	15.1	
Concrete Removal		Cu. Yd.	11.9	
Reinforcement Bars, Epoxy Coated		Pound	2420	

BILL OF MATERIAL

Item	Unit	Quantity
Cap Mine Shaft	Each	1

DESIGNED	VHV
CHECKED	DAB
DRAWN	balva
CHECKED	VHV DAB

MARCH 20, 2009  
EXAMINED *Carl Perry*  
ENGINEER OF STRUCTURAL SERVICES  
PASSED *Ralph E. Anderson*  
ENGINEER OF BRIDGES AND STRUCTURES

SHEET NO. 2	F.A.P. RTE.	SECTION	COUNTY	TOTAL SHEETS	SHEET NO.
2 SHEETS	331	3-2, (8X-1)B, 4-2	SALINE	220	87a
FED. ROAD DIST. NO.		ILLINOIS FED. AID PROJECT		CONTRACT NO. 78058	