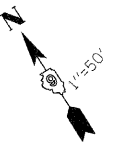
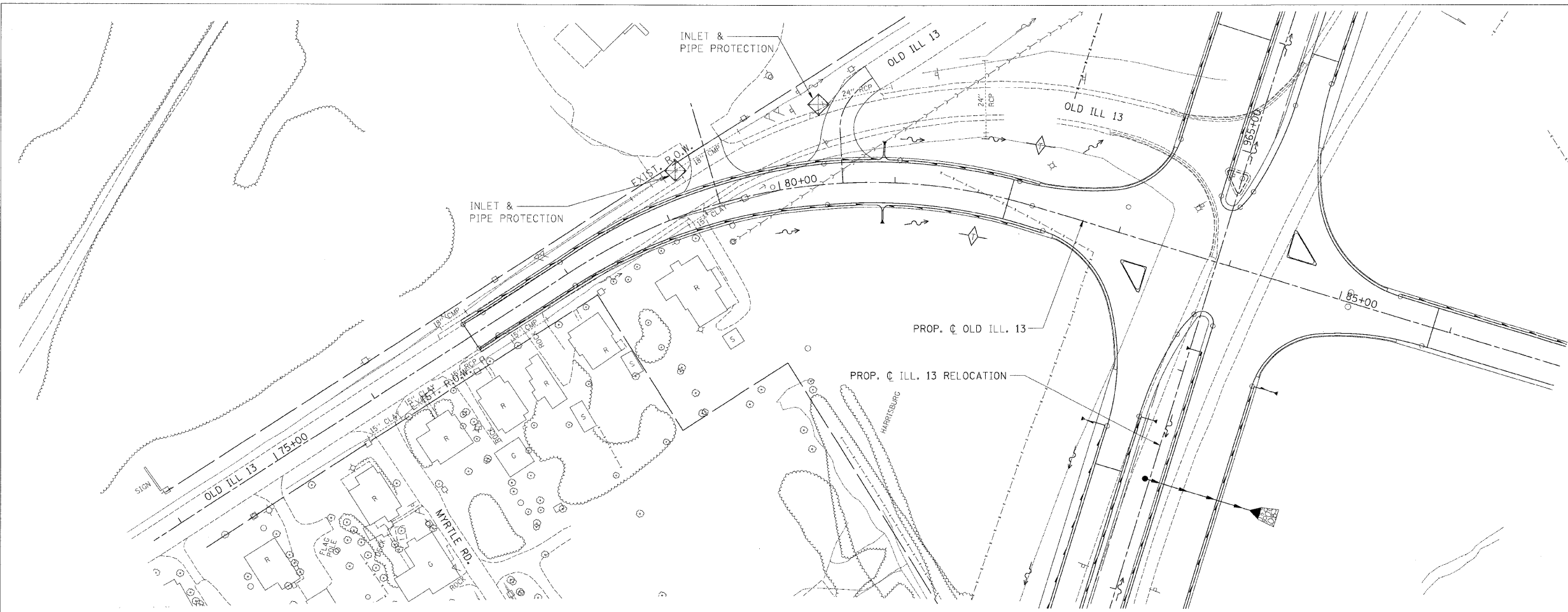


F.A. RTE.	SECTION	COUNTY	TOTAL SHEETS	SHEET NO.
331		SALINE	220	97
STA.		TO STA.		
FED. ROAD DIST. NO.		ILLINOIS FED. AID PROJECT		
3-2, (8X-1)B, 4-2				



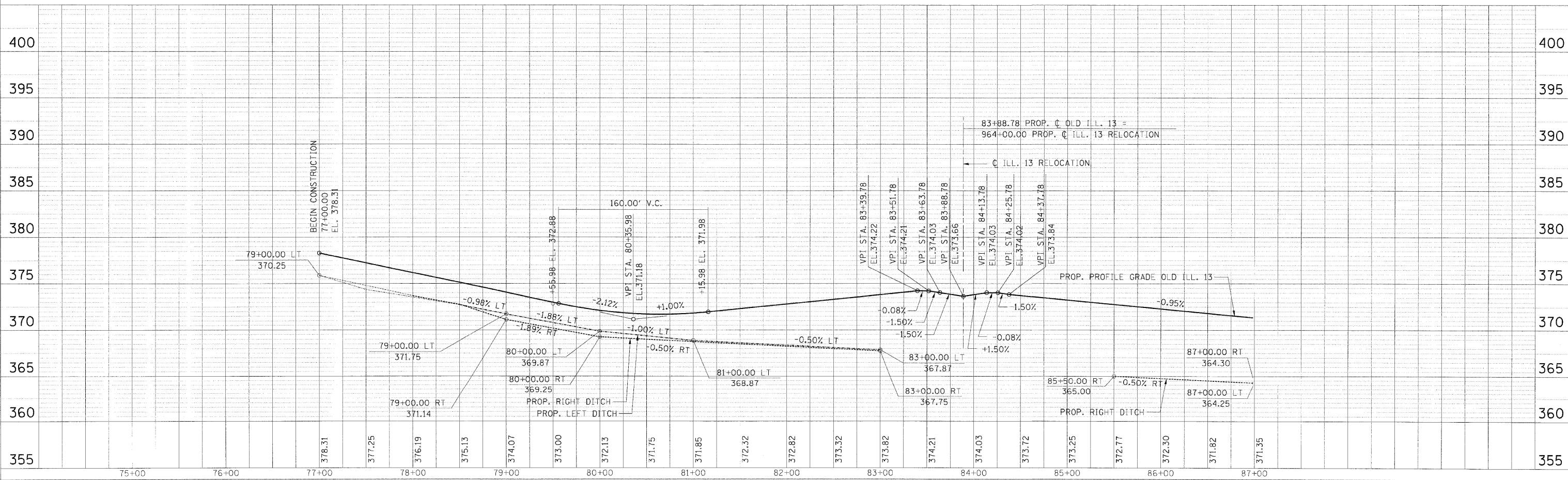
DATE	BY
3/2/08	...
REVISION	...
NO. 1	...
NO. 2	...
NO. 3	...
NO. 4	...
NO. 5	...
NO. 6	...
NO. 7	...
NO. 8	...
NO. 9	...
NO. 10	...

DRAWN BY	DATE
...	3/2/08
CHECKED BY	...
...	...
...	...



DATE	BY
3/2/08	...
REVISION	...
NO. 1	...
NO. 2	...
NO. 3	...
NO. 4	...
NO. 5	...
NO. 6	...
NO. 7	...
NO. 8	...
NO. 9	...
NO. 10	...

M:\PROJECTS\PROJ356\ROADWAY\COMMON\Reference Files
Active File: erp356-001.dgn



TEMPORARY EROSION PLAN - OLD ILL.13 - STA. 77+00.00 TO STA. 88+00.00