

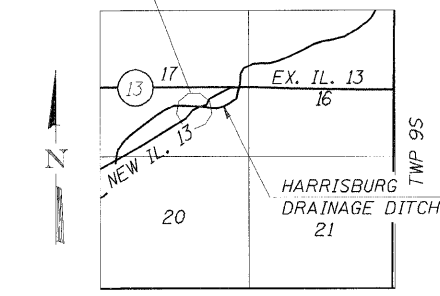
STATE OF ILLINOIS  
DEPARTMENT OF TRANSPORTATION

PROP. IMPROVEMENT RANGE 6E 3rd PM

ROUTE NO.	SECTION	COUNTY	TOTAL SHEETS	SHEET NO.	SHEET NO. 1 OF 4 SHEETS
331	(8-1)A	SALINE	220	115	
FED. ROAD DIST. NO. 7		ILLINOIS		FED. AID PROJECT-	
CONTRACT NO. 78058					

Bench Mark: BM #318 chiseled square in south end of double box culvert under lovers lane at station 953+00 at 310' left of center line. Elevation 374.02

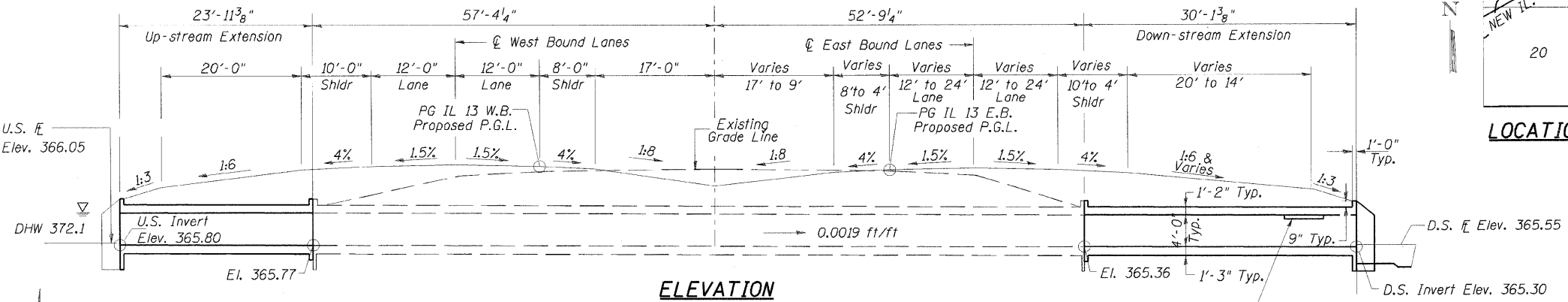
Existing Structure: S.N. 083-2013, double box culvert, 25'-0" out to out of exterior walls, 192'-0" long. Originally built in 1996. Built as FAP 331, Section (8-1)A at station 958+28. The contractor shall extend the culvert at both ends. Traffic shall be maintained during the construction by staging. (See roadway plans for details) no salvage. Precast option is not allowed



LOCATION SKETCH

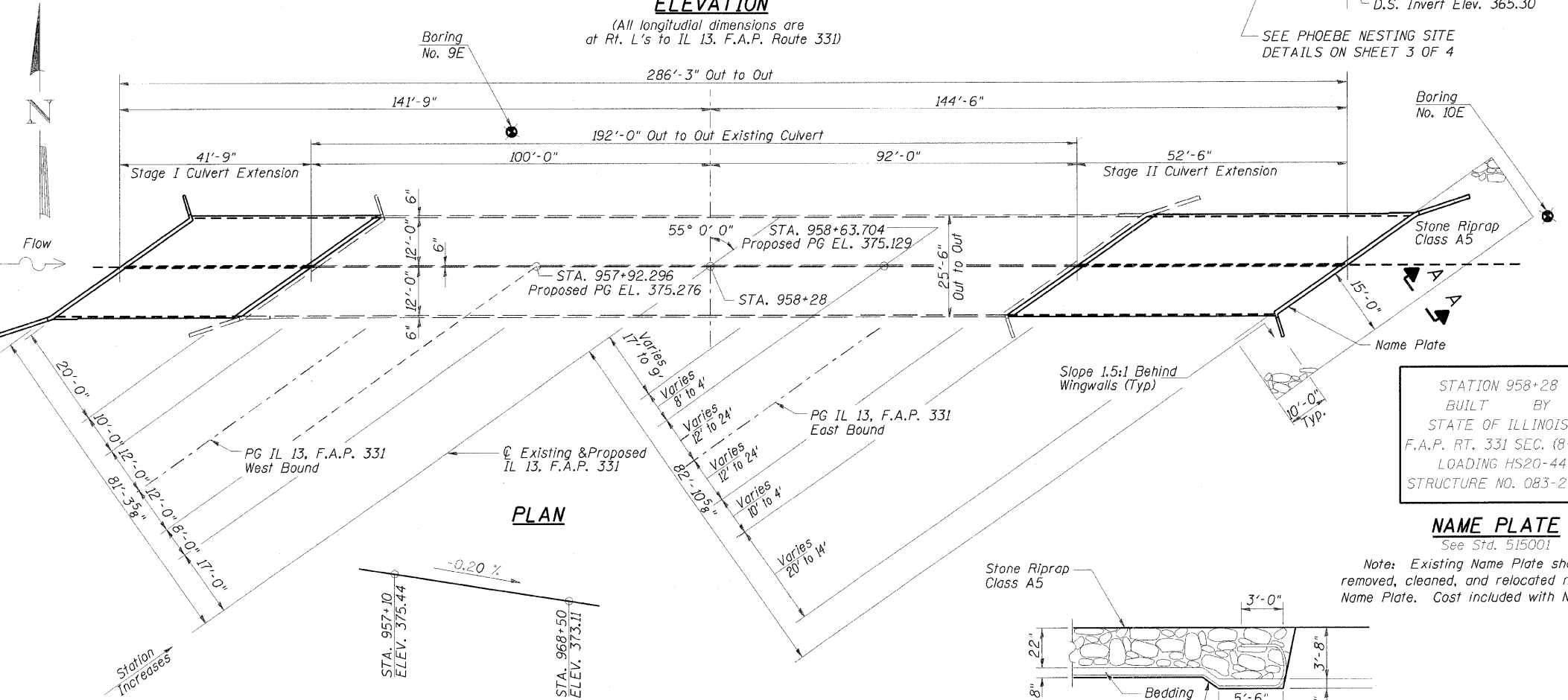
GENERAL NOTES

1. Reinforcement bars shall conform to the requirements of ASTM A 706 Gr 60.
2. Reinforcement bars designated (E) shall be epoxy coated.
3. Plan dimensions and details relative to existing plans are subject to nominal construction variations. The contractor shall field verify existing dimensions and details affecting new construction and make necessary approved adjustments prior to construction or ordering of materials. Such variations shall not be cause for additional compensation for a change in scope of the work, however, the Contractor will be paid for the quantity actually furnished at the unit price bid for the work.
4. Layout of the slope protection system may be varied to suit ground conditions in the field as directed by the Engineer.



ELEVATION

(All longitudinal dimensions are at Rt. L's to IL 13, F.A.P. Route 331)



PLAN

PROFILE GRADE

ILLINOIS 13  
(ALONG MEDIAN EDGE OF ROADWAY)

WATERWAY INFORMATION

DRAINAGE AREA = 0.70 SQ. MI.		EXT. LOW GRADE ELEV. = 372.4' @ STA. 80+50 on OLD IL 13		PROP. LOW GRAD ELEV. = 372.4' @ STA. 80+50 on OLD IL 13						
FLOOD	FREQ. YR.	Q C.F.S.	OPENING SQ.FT.		NATURAL H.W.E.		HEAD - FT.		HEADWATER EL.	
			EXIST.	PROP.	PROP.	EXIST.	PROP.	EXIST.	PROP.	
	10	544	96	96	370.0	0.3	0.2	370.3	370.2	
Design	50	885	96	96	372.1	0.2	0.0	372.3	372.1	
Base	100	1039	96	96	373.3	0.1	0.0	373.4	373.3	
Overtopping	55/56	899/939	96	96	372.4	0.0	0.0	372.4	372.4	

TOTAL BILL OF MATERIALS

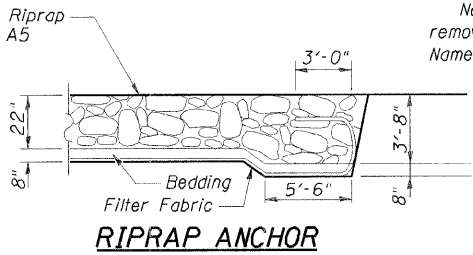
ITEM	UNIT	QUANTITY	PAY ITEM
STONE RIPRAP, CLASS A5	TON	190	28100209
FILTER FABRIC	SQ YD	125	28200200
NAME PLATES	EACH	1	51500100
EXPANSION BOLTS 3/4 INCH	EACH	114	54002020
CONCRETE BOX CULVERTS	CU YD	260	54003000
REINFORCEMENT BARS, EPOXY COATED	POUND	69,185	50800205

STATION 958+28  
BUILT BY  
STATE OF ILLINOIS  
F.A.P. RT. 331 SEC. (8-1)A  
LOADING HS20-44  
STRUCTURE NO. 083-2013

NAME PLATE

See Std. 515001

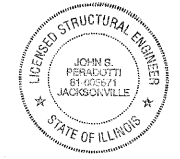
Note: Existing Name Plate shall be carefully removed, cleaned, and relocated next to new Name Plate. Cost included with Name Plates.



RIPRAP ANCHOR

APPROVED FOR STRUCTURAL ADEQUACY ONLY

John S. Peradotti  
ENGINEER OF BRIDGES AND STRUCTURES



John S. Peradotti 3-15-09  
JOHN S. PERADOTTI  
ILLINOIS STRUCTURAL NO. 081-005671  
EXPIRES 11-30-2010

LOADING HS20-44

Allow 50 lb/ft<sup>2</sup> for future wearing surface.

DESIGN SPECIFICATIONS

1996 AASHTO with 1997, 1998, 1999, 2000 and 2002 Interims.

DESIGN STRESSES

FIELD UNITS  
f'c = 3,500 psi  
fy = 60,000 psi (Reinf.)

GENERAL PLAN  
F.A.P. RTE 331 SEC. (8-1)A  
OVER HARRISBURG  
DRAINAGE DITCH  
SALINE COUNTY  
STATION 958+28  
STRUCTURE 083-2013

HR  
HURST - ROSCHE  
ENGINEERS, INC.

DESIGNED	J.S.P.
CHECKED	M.E.B.
DRAWN	M.L.K.
CHECKED	J.S.P./M.E.B.