

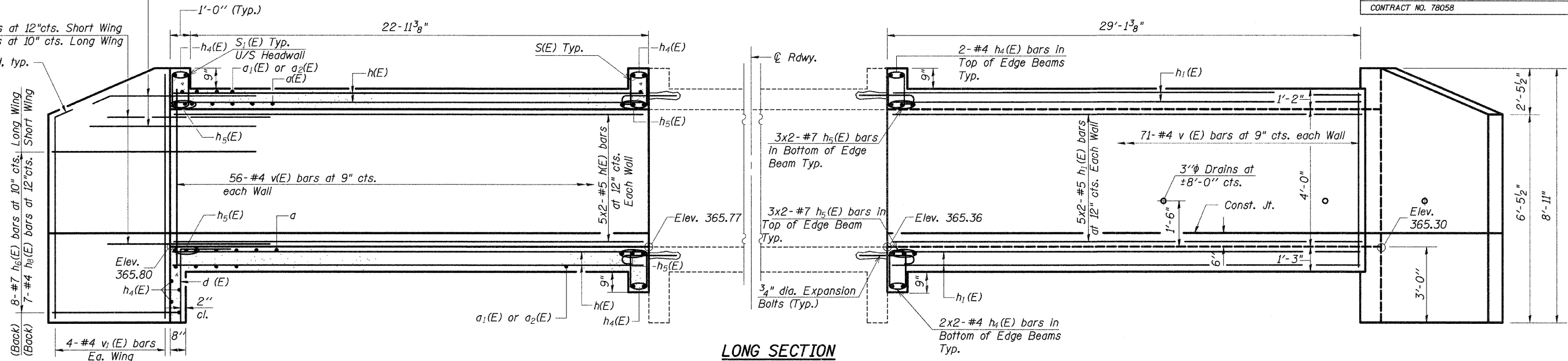
STATE OF ILLINOIS
DEPARTMENT OF TRANSPORTATION

ROUTE NO.	SECTION	COUNTY	TOTAL SHEETS	SHEET NO.
331	(8-1A)	SALINE	220	116
FED. ROAD DIST. NO. 7		ILLINOIS	FED. AID PROJECT-	
CONTRACT NO. 78058				

SHEET NO. 2 OF
4 SHEETS

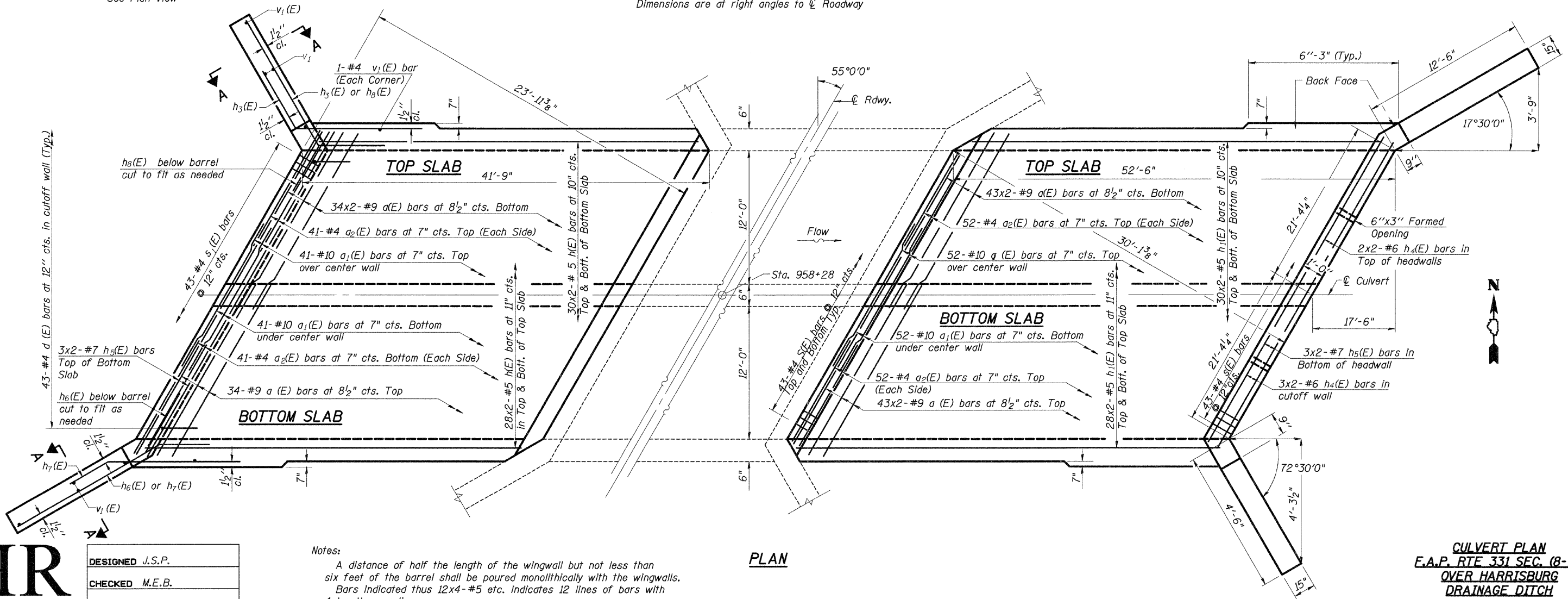
(Back)
3-# 4 h₃(E) bars at 12 cts. Short Wing
3-# 7 h₇(E) bars at 10" cts. Long Wing

(Front)
5-# 4 h₃(E) bars at 12" cts. Short Wing
6-# 7 h₇(E) bars at 10" cts. Long Wing



LONG SECTION

Dimensions are at right angles to ϕ Roadway



PLAN

Notes:

A distance of half the length of the wingwall but not less than six feet of the barrel shall be poured monolithically with the wingwalls.
Bars indicated thus 12x4-#5 etc. indicates 12 lines of bars with 4 lengths per line.
See sheet 3 of 4 for section A-A.

HR
HURST - ROSCHE
ENGINEERS, INC.

DESIGNED	J.S.P.
CHECKED	M.E.B.
DRAWN	M.L.K.
CHECKED	J.S.P./M.E.B.

CULVERT PLAN
E.A.P. RTE 331 SEC. (8-1A)
OVER HARRISBURG
DRAINAGE DITCH
SALINE COUNTY
STATION 958+28
STRUCTURE 083-2013