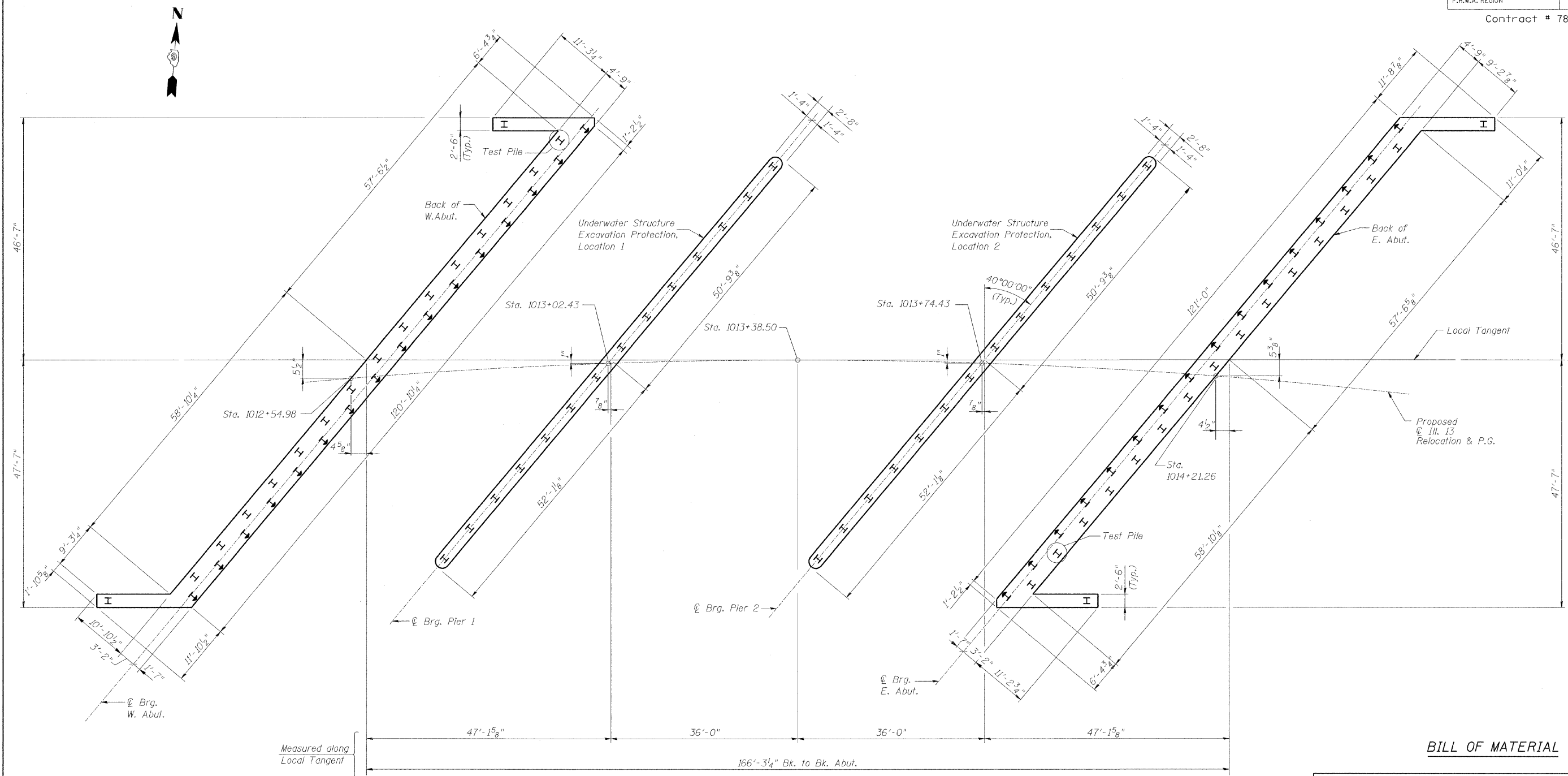


ROUTE NO.	SECTION	COUNTY	TOTAL SHEETS	SHEET NO.
F.A.P. 331	(8X-1)B	SALINE CO.	220	120
STA.		TO STA.		
F.H.W.A. REGION		ILLINOIS	PROJECT	

Contract # 78058



FOUNDATION LAYOUT

BILL OF MATERIAL

Pay Item	UNIT	QUANTITY
Underwater Structure Excavation Protection, Location 1	Each	1
Underwater Structure Excavation Protection, Location 2	Each	1

NOTES:

1. For Pile layout and details see Sheets S15 and S17.
2. For HP Pile Details see sheet S20.

DESIGNED	RJW
CHECKED	WJZ
DRAWN	LM
CHECKED	WJZ

**benesch**  
 alfred benesch & company  
 Engineers • Surveyors • Planners  
 205 North Michigan Avenue, Suite 2400  
 Chicago, Illinois 60601  
 312-565-0450

ILLINOIS DEPARTMENT OF TRANSPORTATION  
 RELOCATED ILLINOIS ROUTE 13 OVER  
 HARRISBURG DITCH  
 F.A.P. 331 SECTION (8X-1)B  
**FOUNDATION LAYOUT**  
 SN: 083-0060  
 SALINE CO., IL.  
 STA. 1013+38.50  
 DATE: FEB 4, 2009