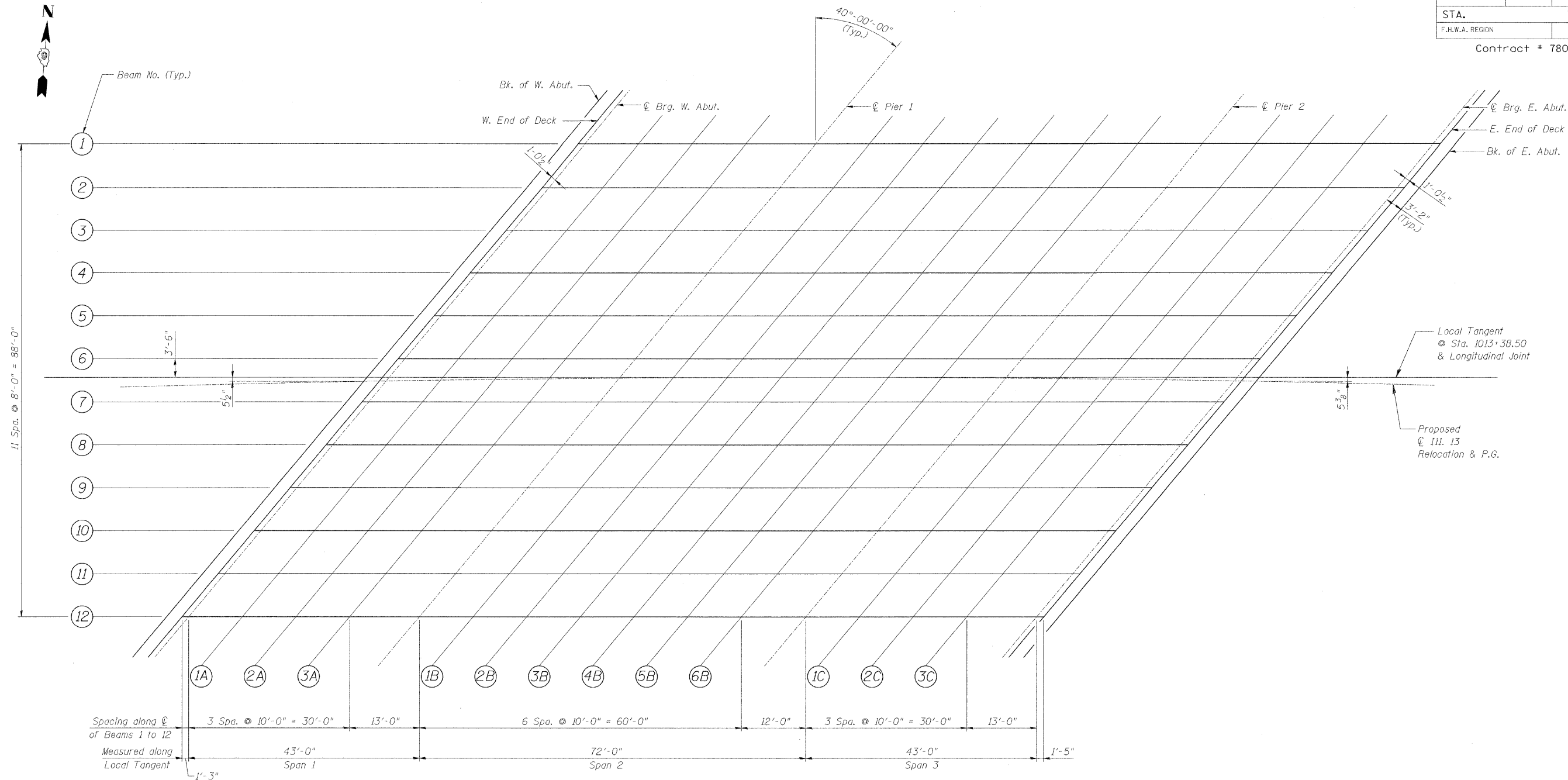
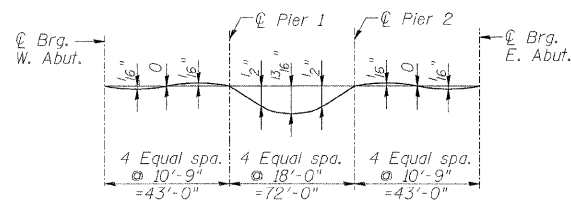


ROUTE No.	SECTION	COUNTY	TOTAL SHEETS	SHEET NO.
F.A.P. 331	(8X-I)B	SALINE CO.	220	121
STA.		TO STA.		
F.H.W.A. REGION		ILLINOIS	PROJECT	

Contract # 78058



PLAN

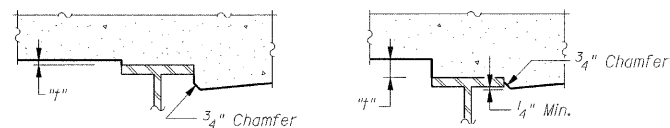


DEAD LOAD DEFLECTION DIAGRAM

(Due to weight of concrete only)
(Deck & Parapet)

Note:

The above deflections are not to be used in the field if the Engineer is working from the grade elevations adjusted for dead load deflections as shown on Sheets S5 & S6.



AT MINIMUM FILLET

AT MAXIMUM FILLET

To determine "t": After all structural steel has been erected, elevations at the top of flanges of the beams shall be taken at intervals shown above. These elevations subtracted from the "Theoretical Grade Elevations Adjusted for Dead Load Deflection" shown on Sheets S5 & S6 minus slab thickness, equal the fillet heights "t" above top flange of beams.

FILLET HEIGHTS

NOTES:

1. For stations and top of slab elevations, see Sheets S5 & S6.

DESIGNED	EJB
CHECKED	MRB
DRAWN	LM
CHECKED	MRB

benesch

alfred benesch & company
Engineers • Surveyors • Planners
205 North Michigan Avenue, Suite 2400
Chicago, Illinois 60601
312-565-0450
JOB NO. 3526

ILLINOIS DEPARTMENT OF TRANSPORTATION
RELOCATED ILLINOIS ROUTE 13 OVER
HARRISBURG DITCH
F.A.P. 331 SECTION (8X-I)B

DECK SCREED PLAN

SN: 083-0060
SALINE CO., IL.

STA. 1013+38.50
DATE: FEB 4, 2009