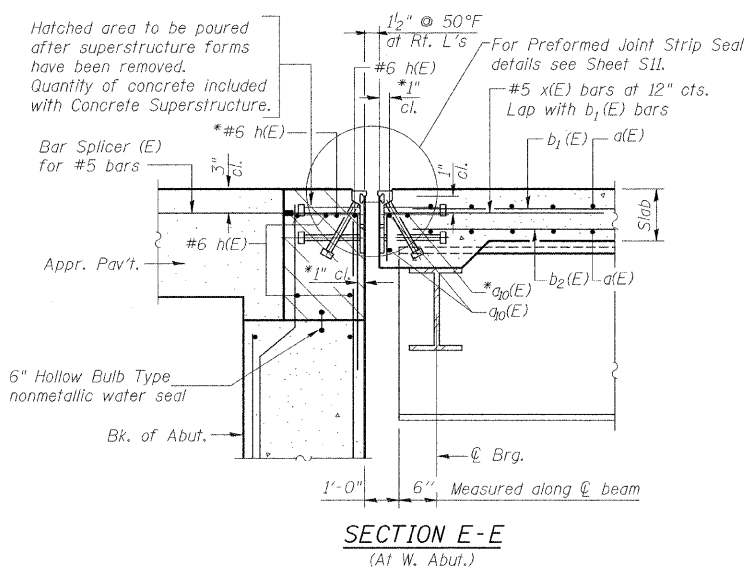


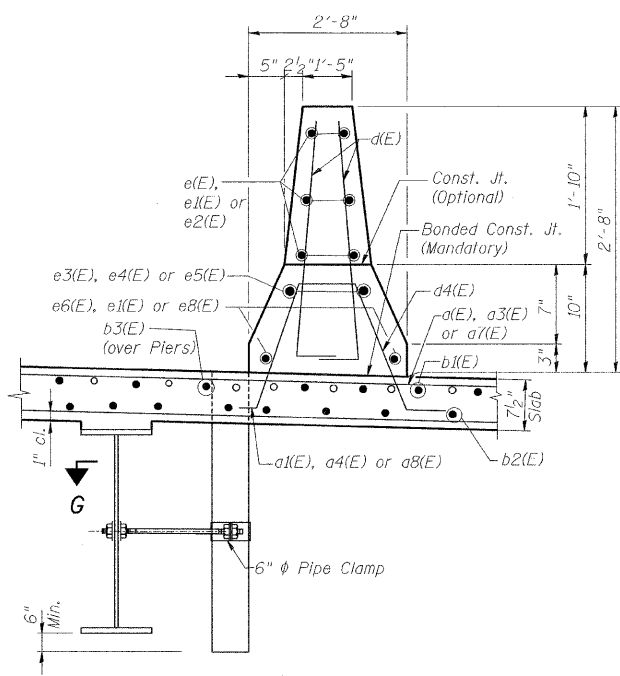
ROUTE No.	SECTION	COUNTY	TOTAL SHEETS	SHEET NO.
F.A.P. 331	(8X-1)B	SALINE CO.	220	126
STA.		TO STA.		
F.H.W.A. REGION		ILLINOIS	PROJECT	

Contract # 78058  
**BILL OF MATERIAL**

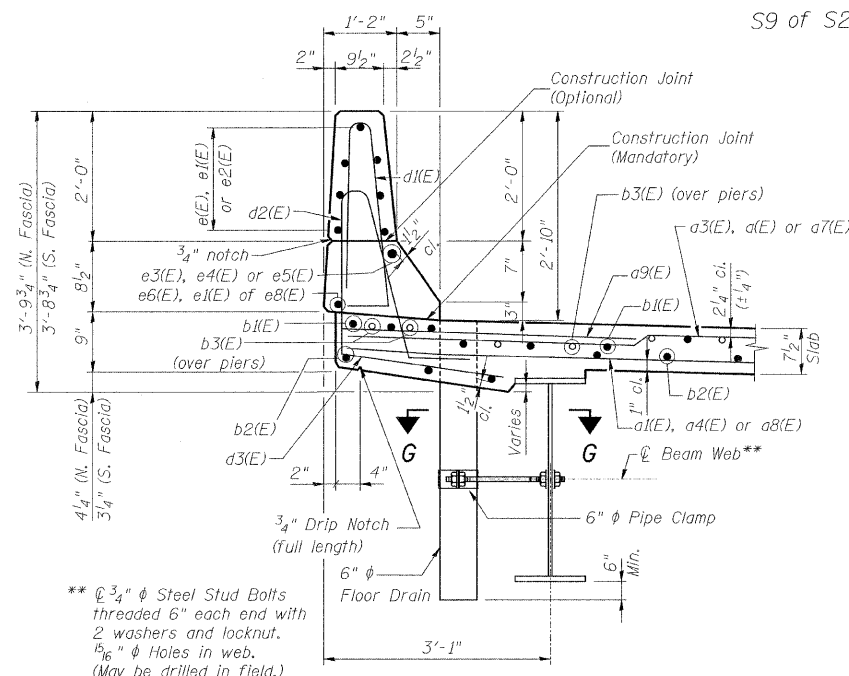
Bar	No.	Size	Length	Shape
a(E)	866	#5	32'-9"	—
a1(E)	396	#5	36'-0"	—
a2(E)	201	#5	26'-6"	—
a3(E)	53	#5	33'-6"	—
a4(E)	37	#5	39'-6"	—
a5(E)	51	#5	38'-6"	—
a6(E)	34	#5	31'-6"	—
a7(E)	62	#5	38'-0"	—
a8(E)	42	#5	38'-0"	—
a9(E)	350	#6	6'-0"	—
a10(E)	16	#5	31'-6"	—
b(E)	480	#5	34'-0"	—
b2(E)	564	#5	28'-7"	—
b3(E)	186	#6	34'-0"	—
d(E)	354	#5	3'-0"	—
d1(E)	354	#5	5'-7"	—
d2(E)	354	#5	7'-9"	—
d4(E)	177	#5	4'-10"	—
x(E)	180	#5	4'-1"	—
e(E)	80	#4	17'-9"	—
e1(E)	144	#4	7'-9"	—
e2(E)	60	#4	18'-2"	—
e3(E)	8	#8	36'-0"	—
e4(E)	16	#8	7'-9"	—
e5(E)	8	#8	30'-3"	—
e6(E)	8	#4	36'-0"	—
e8(E)	8	#4	29'-0"	—
Pay Item	Unit	Total		
Floor Drains	Each	16		
Concrete Superstructure	Cu. Yd.	447.9		
Bridge Deck Grooving	Sq. Yd.	1,513		
Protective Coat	Sq. Yd.	1,860		
Reinf. Bars, Epoxy Coated	Pound	119,890		



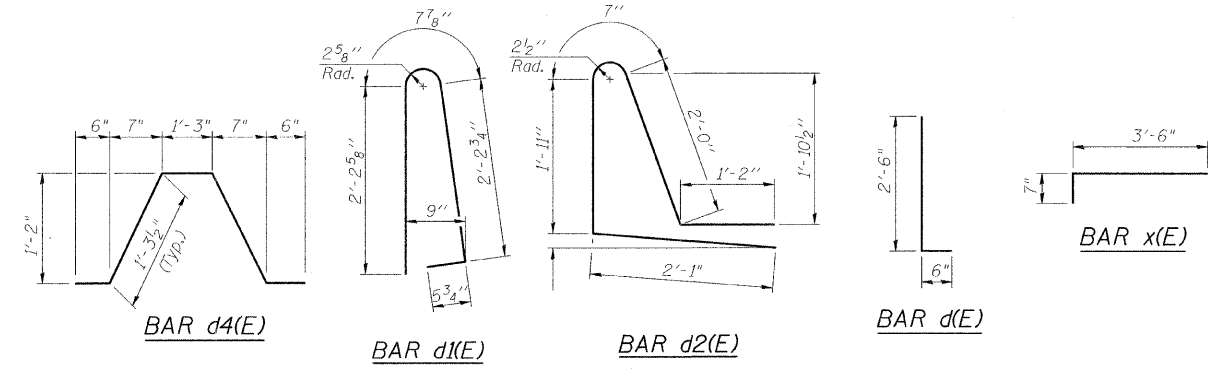
\*Place a<sub>10</sub>(E) and h<sub>2</sub>(E) bars in back of anchor bolt as shown if required to maintain 1" clear (+0-b<sub>1</sub>). Anchor bolts should be tied to a<sub>10</sub>(E) and h<sub>2</sub>(E) bars.



SECTION THRU MEDIAN



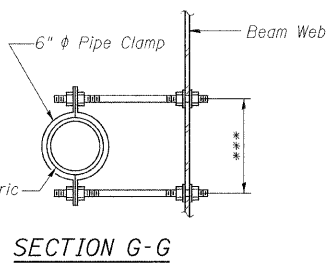
SECTION THRU PARAPET



**FIELD CUTTING DIAGRAMS**

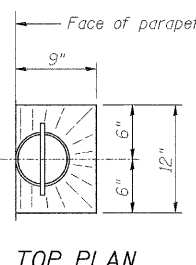
Cut and bundle bars in Sets, as shown. Use one Set at each end of deck.  
Order a3(E) thru a8(E) full length.

**benesch**  
alfred benesch & company  
Engineers • Surveyors • Planners  
205 North Michigan Avenue, Suite 2400  
Chicago, Illinois 60601  
312-665-0480  
JOB NO. 3526

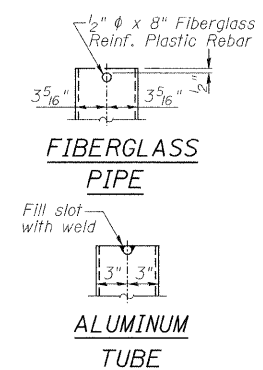


SECTION G-G

\*\*\* Dimension as required by Pipe Clamp.



TOP PLAN



**FLOOR DRAIN DETAILS**

**Note:**  
The exterior surfaces of the floor drains shall be painted with the finish coat as specified in the special provisions for Cleaning and Painting New Metal Structures. The exterior surfaces of the drains shall be cleaned according to Steel Structures Painting Council's Spec. SSPC-SPI prior to painting. Fiberglass pipe shall conform to ASTM D 2996, with short-time rupture strength hoop tensile stress of 30,000 p.s.i. minimum.

DESIGNED	KWS/EJB
CHECKED	MRB
DRAWN	LM
CHECKED	MRB

**NOTES:**  
1. All Bar dimensions are out to out.  
2. Work this sheet with Sheets S7, S8 and S10.

ILLINOIS DEPARTMENT OF TRANSPORTATION  
RELOCATED ILLINOIS ROUTE 13 OVER  
HARRISBURG DITCH  
F.A.P. 331 SECTION (8X-1)B

**DECK DETAILS**

SN: 083-0060  
SALINE CO., IL.  
STA. 1013+38.50  
DATE: FEB 4, 2009