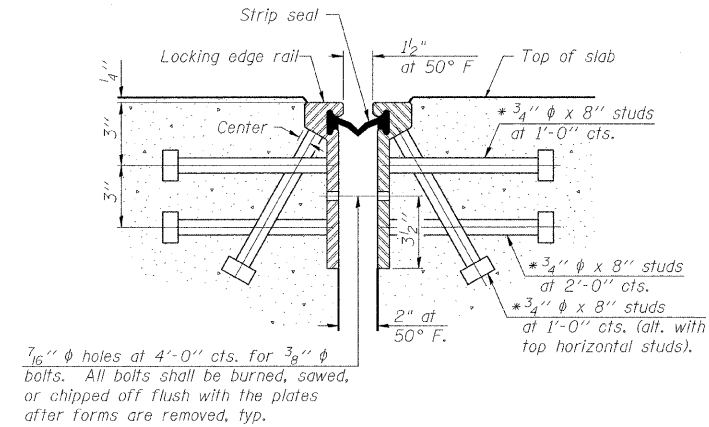


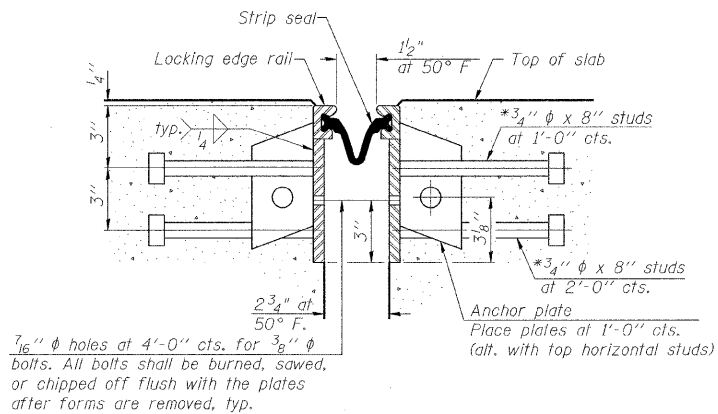
| | | | | |
|-----------------|---------|------------|--------------|-----------|
| ROUTE No. | SECTION | COUNTY | TOTAL SHEETS | SHEET NO. |
| F.A.P. 331 | (8X-1)B | SALINE CO. | 220 | 128 |
| STA. | | TO STA. | | |
| F.H.W.A. REGION | | ILLINOIS | PROJECT | |

Contract # 78058

* Granular or solid flux filled headed studs conforming to Article 1006.32 of the Std. Specs., automatically end welded.

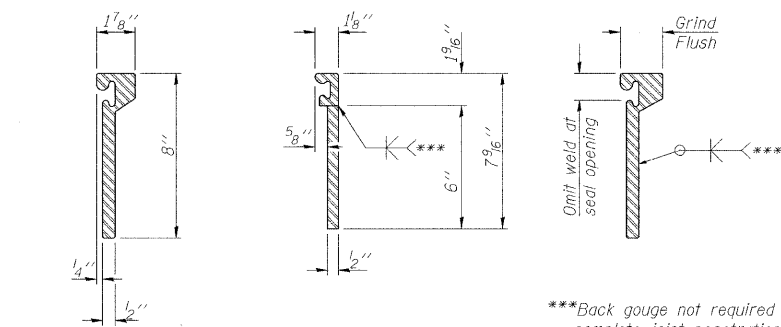


SECTION THRU ROLLED RAIL JOINT



SECTION THRU WELDED RAIL JOINT

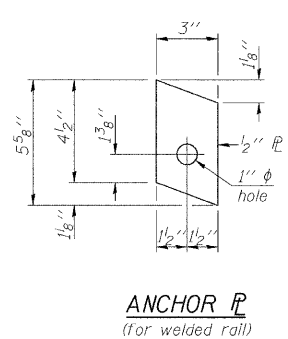
Notes:
 The strip seal shall be made continuous and shall have a minimum thickness of 1/4". The configuration of the strip seal shall match the configuration of the Locking Edge Rails. Open or "webbed" strip seal gland configurations are not permitted. The gland shall be sized for a maximum rated movement of 4 inches.
 The height and thickness of the Locking Edge Rails shown are minimum dimensions. The actual configuration of the Locking Edge Rails and matching strip seal may vary from manufacturer to manufacturer. Flanged edge rails will not be allowed. Locking Edge Rails may be spliced at slope discontinuities and stage construction joints.
 The manufacturer's recommended installation methods shall be followed. The joint opening and deck dimensions detailed on the superstructure are based on a rolled rail expansion joint. If the Contractor elects to use the welded rail expansion joint, the opening and deck dimensions shall be modified according to the dimensions detailed on this sheet. Required modifications shall be made at no additional cost to the State.
 All steel components shall be galvanized after fabrication according to Article 520.03 of the Standard Specifications.



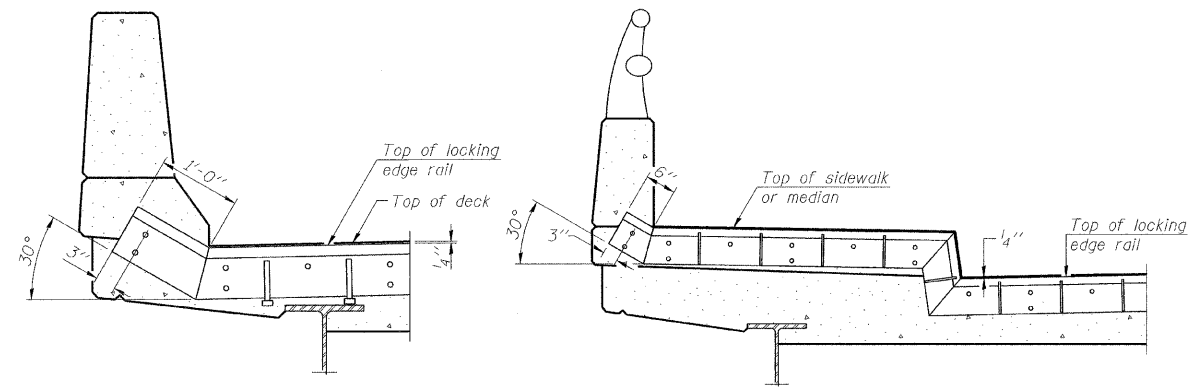
ROLLED EXTRUDED RAIL WELDED RAIL

LOCKING EDGE RAIL SPLICE

The inside of the locking edge rail groove shall be free of weld residue.



ANCHOR PLATE (for welded rail)

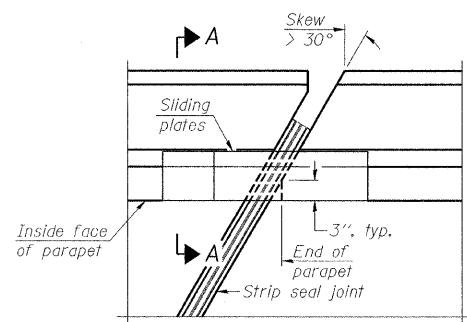


AT PARAPET

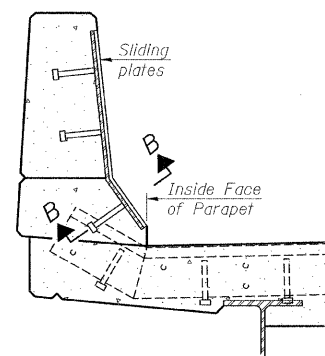
AT SIDEWALK OR MEDIAN

TYPICAL END TREATMENTS

LOCKING EDGE RAILS

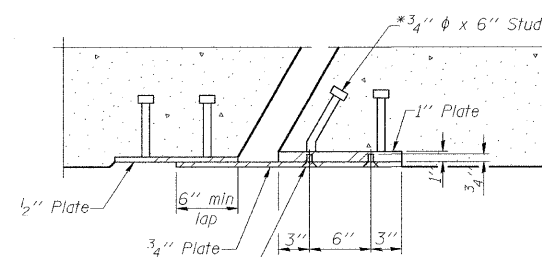


PLAN



SECTION A-A

POINT BLOCK DETAILS (for skews > 30°)



SECTION B-B

BILL OF MATERIAL

| Item | Unit | Total |
|----------------------------|------|-------|
| Preformed Joint Strip Seal | Foot | 242 |

| | |
|----------|-----|
| DESIGNED | AJK |
| CHECKED | KMP |
| DRAWN | VH |
| CHECKED | KMP |

EJ-SSJ

10-1-08

ILLINOIS DEPARTMENT OF TRANSPORTATION
 RELOCATED ILLINOIS ROUTE 13 OVER
 HARRISBURG DITCH
 F.A.P. 331 SECTION (8X-1)B
 PREFORMED JOINT STRIP SEAL

benesch

alfred benesch & company
 Engineers • Surveyors • Planners
 205 North Michigan Avenue, Suite 2400
 Chicago, Illinois 60601
 312-565-0450

SN: 083-0060
 SALINE CO., IL.

STA. 1013+38.50
 DATE: FEB 4, 2009