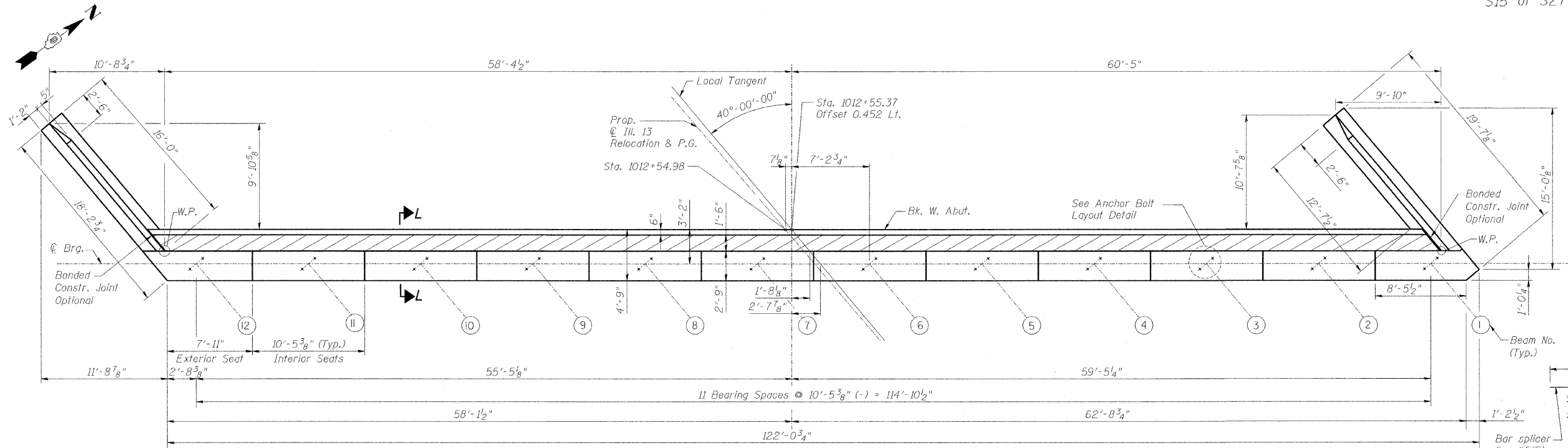
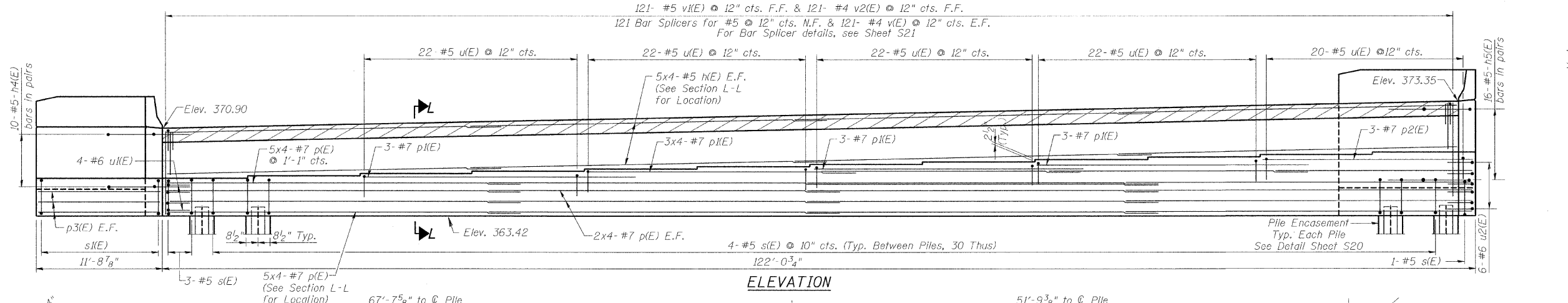


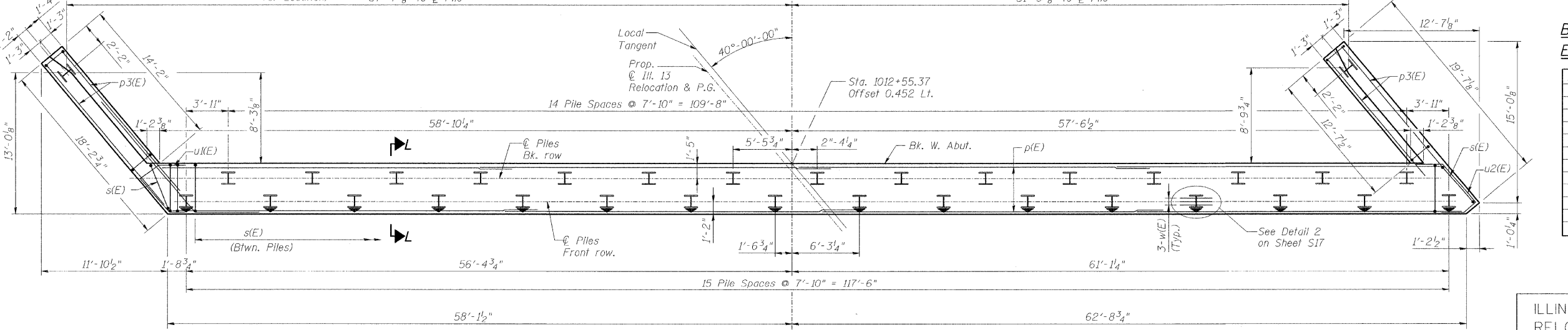
ROUTE NO.	SECTION	COUNTY	TOTAL SHEETS	SHEET NO.
F.A.P. 331	(8X-1)B	SALINE CO.	220	132
STA.	TO STA.			
F.H.W.A. REGION	ILLINOIS	PROJECT		



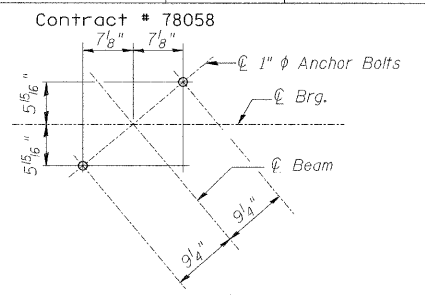
**TOP PLAN**



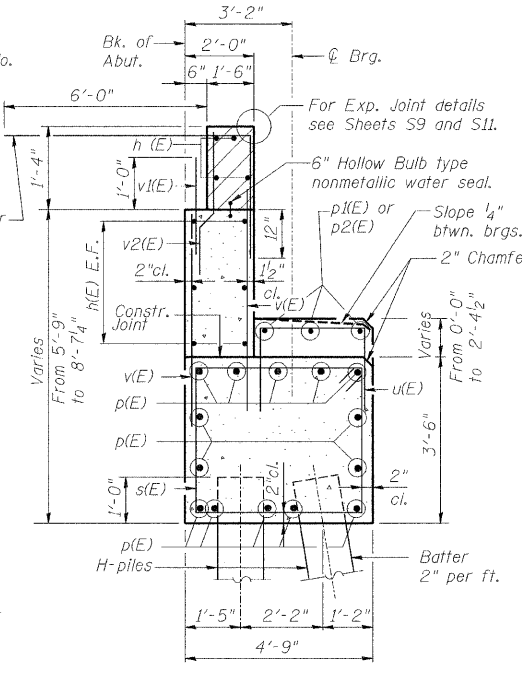
**ELEVATION**



**PLAN-PILE CAP**



**ANCHOR BOLT LAYOUT**



**SEC. L-L THRU ABUT.**

**BEAM SEAT ELEVATION**

Bm.	Elevation
1	369.29
2	369.08
3	368.87
4	368.66
5	368.44
6	368.23
7	368.01
8	367.80
9	367.58
10	367.36
11	367.14
12	366.92

**PILE DATA**

Type: HP14x73  
 Nominal Required Bearing: 576 kips  
 Allowable Resistance Available: 192 kips  
 Est. Lengths: 70 ft.  
 No. Production Piles: 32  
 No. Test Piles: 1

DESIGNED	RJW
CHECKED	WJZ
DRAWN	LM
CHECKED	HMA

**NOTES:**

- Space reinforcement bars in cap to miss Anchor
- For Wingwall Elevation and Details see Sheet S16.
- Indicates Battered Pile.
- Pour Steps monolithically with cap.
- Bars Indicated thus: 5x4-#7 etc., indicates 5 lines of #7 bars with 4 lengths per line.
- E.F. denotes each face.-F.F. denotes far face.-N.F. denotes near face.
- Hatched area to be poured after superstructure forms have been removed. Quantity of concrete included with Concrete Superstructure.
- Use the following minimum lap lengths unless otherwise noted: #4 - 1'-8", #5 - 2'-2", #6 - 2'-8", and #7 - 4'-10".

**benesch**  
 alfred benesch & company  
 Engineers • Surveyors • Planners  
 205 North Michigan Avenue, Suite 2400  
 Chicago, Illinois 60601  
 312-565-0450  
 JOB NO. 3526

ILLINOIS DEPARTMENT OF TRANSPORTATION  
 RELOCATED ILLINOIS ROUTE 13 OVER  
 HARRISBURG DITCH  
 F.A.P. 331 SECTION (8X-1)B  
**WEST ABUTMENT PLAN AND ELEVATION**

SN: 083-0060  
 SALINE CO., IL.  
 STA. 1013+38.50  
 DATE: FEB 4, 2009