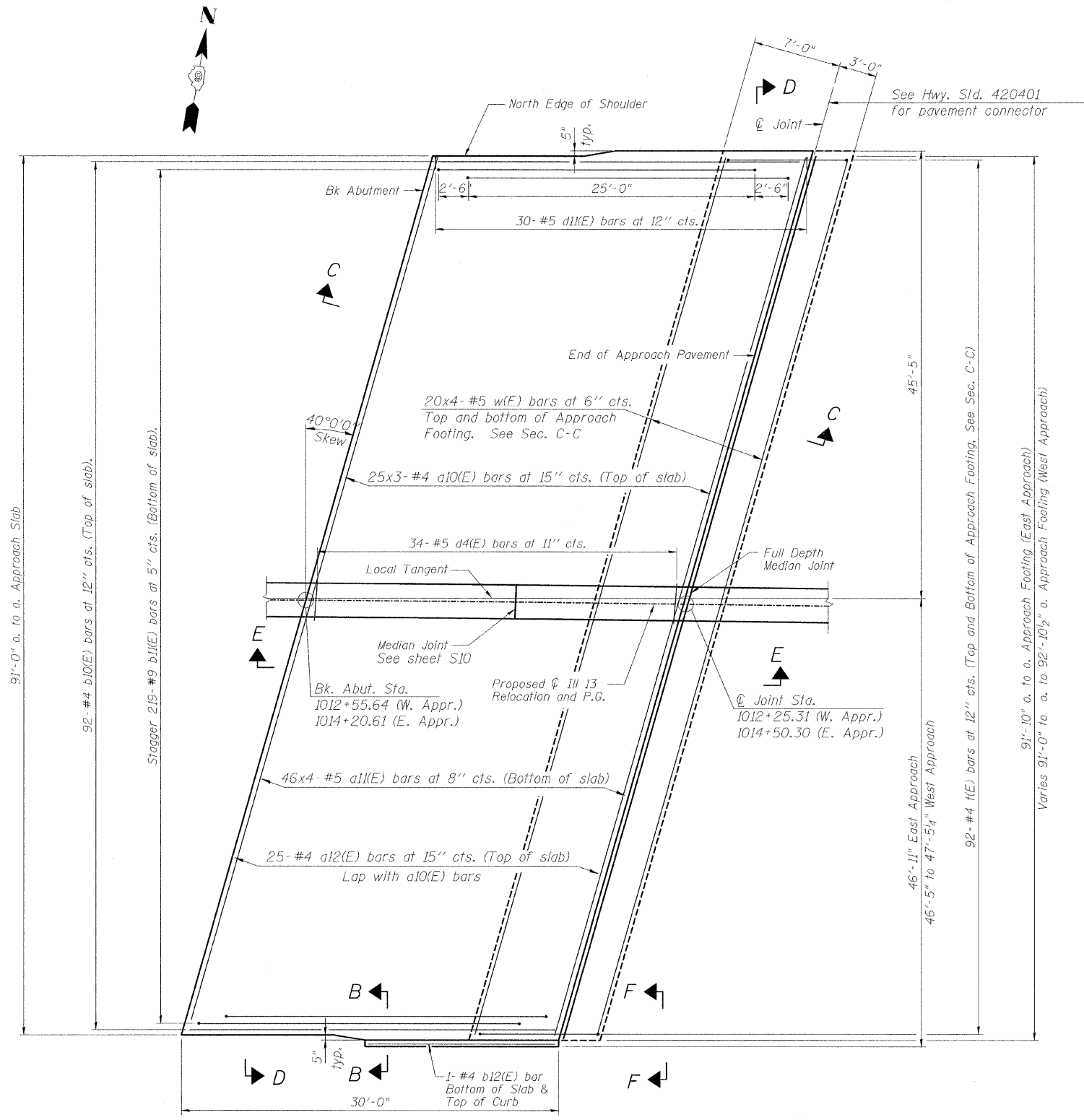


ROUTE No.	SECTION	COUNTY	TOTAL SHEETS	SHEET NO.
F.A.P. 331	(8X-1)B	SALINE CO.	220	141
STA.		TO STA.		
F.H.W.A. REGION		ILLINOIS	PROJECT	

Contract # 78058

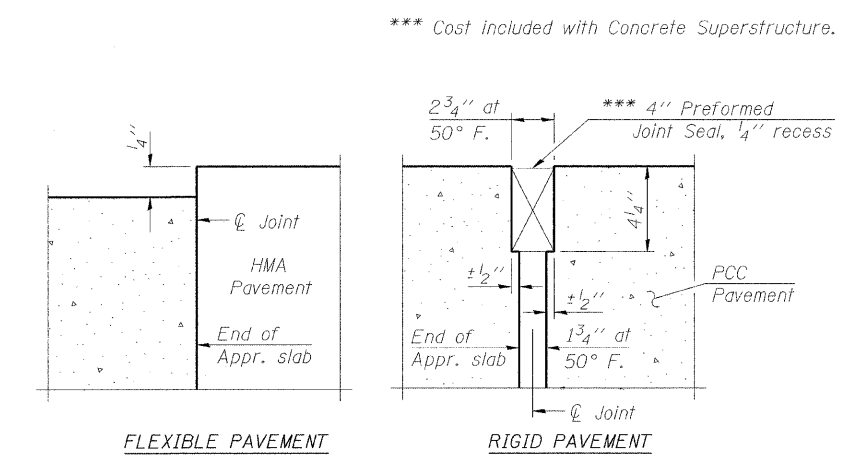


PLAN

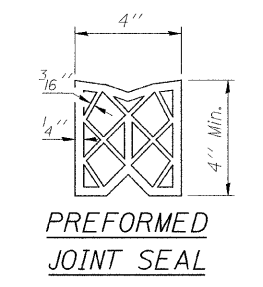
(East Approach Slab shown, West Approach Slab opposite hand except as noted)

* Tilt #9 b11(E) and a12(E) bars as required to maintain clearance.

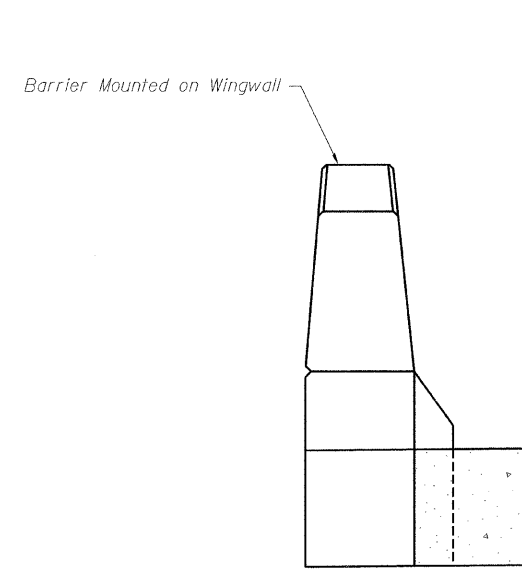
DESIGNED	AJK
CHECKED	KMP
DRAWN	AJK
CHECKED	KMP



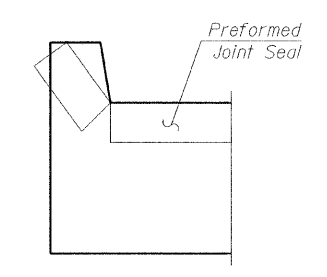
DETAIL A



PREFORMED JOINT SEAL



VIEW B-B



VIEW F-F

Angle Preformed Joint Seal at 45° at curbs when req'd for drainage.

- Notes:
1. See sheet S25 for Sections C-C & D-D and View E-E.
 2. a10(E), a11(E) and w(E) bar spacings measured perpendicular to local tangent.

benesch

alfred benesch & company
 Engineers • Surveyors • Planners
 205 North Michigan Avenue, Suite 2400
 Chicago, Illinois 60601
 312-565-0460
 JOB NO. 3526

ILLINOIS DEPARTMENT OF TRANSPORTATION
 RELOCATED ILLINOIS ROUTE 13 OVER
 HARRISBURG DITCH
 F.A.P. 331 SECTION (8X-1)B
 BRIDGE APPROACH SLAB DETAILS
 (1 OF 2)

SN: 083-0060
 SALINE CO., IL.

STA. 1013+38.50
 DATE: FEB 4, 2009