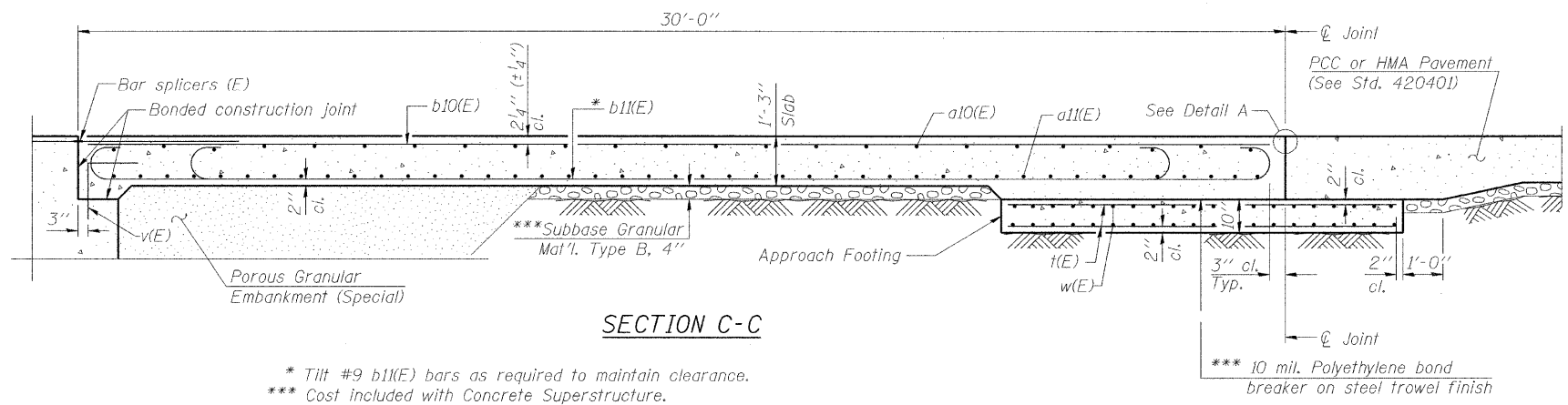


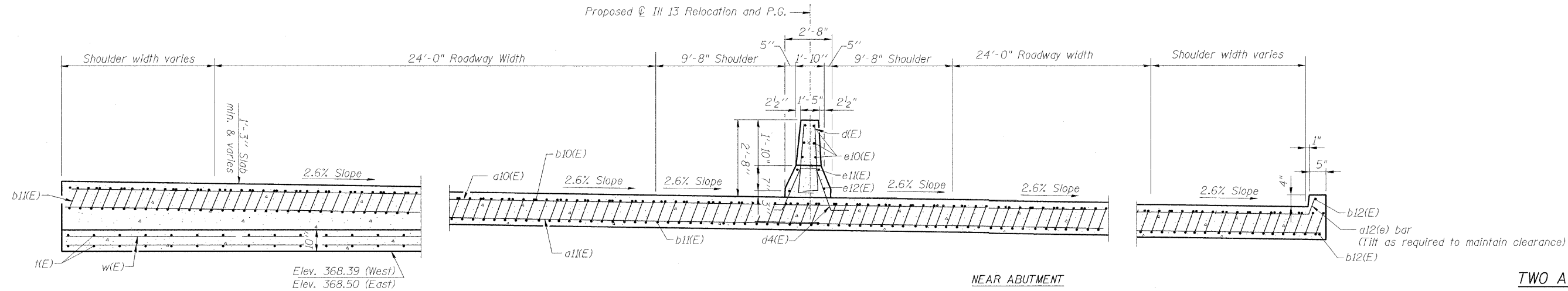
| | | | | |
|-----------------|---------|------------|--------------|-----------|
| ROUTE No. | SECTION | COUNTY | TOTAL SHEETS | SHEET NO. |
| F.A.P. 331 | (8X-1)B | SALINE CO. | 220 | 142 |
| STA. | | TO STA. | | |
| F.H.W.A. REGION | | ILLINOIS | PROJECT | |

Contract # 78058

- Notes:
1. See sheet S23 for Detail A and View B-B.
 2. Approach slab and parapet concrete shall be paid for as Concrete Superstructure.
 3. Approach footing concrete shall be paid for as Concrete Structures.
 4. Reinforcement shall be paid for as Reinforcement Bars, Epoxy Coated.
 5. The approach footing maximum applied service bearing pressure (Qmax) = 2.0 ksf.
 6. For bar splicer details, see sheet S21.
 7. For Porous Granular Embankment (Special) and drainage treatment details, see sheet S2.
 8. For Parapet Joint details, see sheet S10.



* Tilt #9 b11(E) bars as required to maintain clearance.
 *** Cost included with Concrete Superstructure.



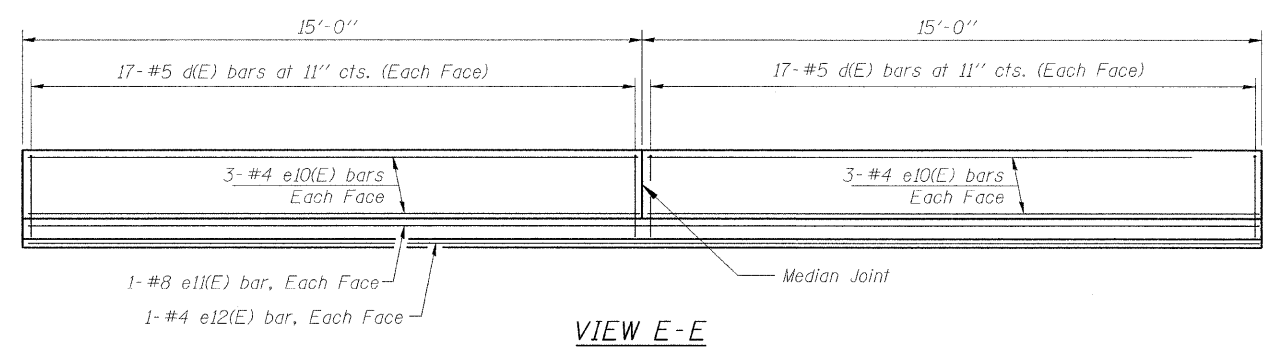
NEAR APPROACH FOOTING

SECTION D-D
 (See Plan for dimensions not shown)

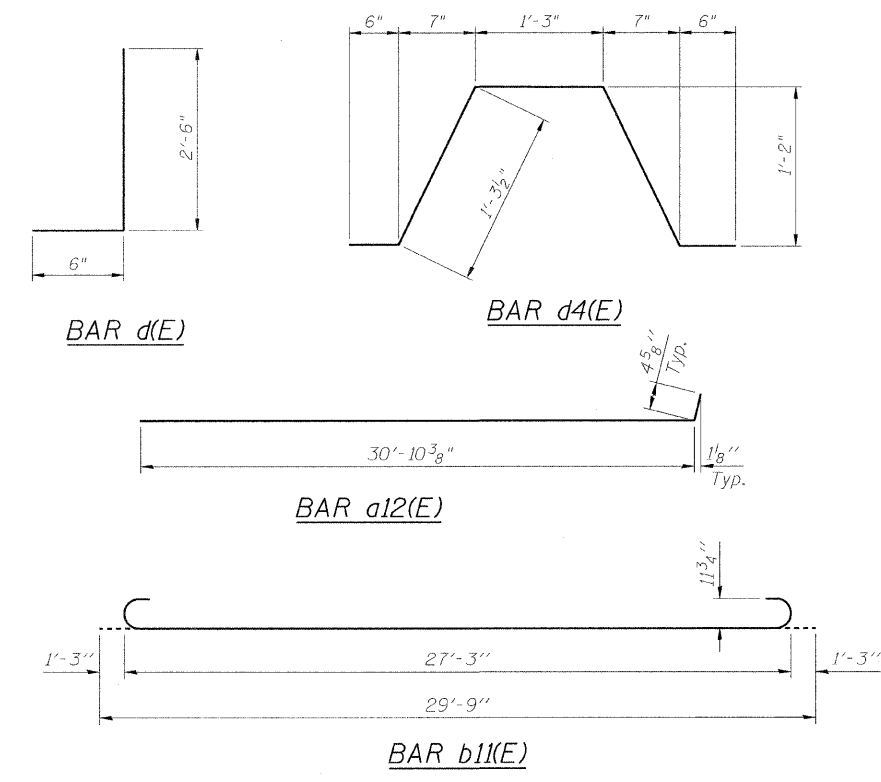
NEAR ABUTMENT

TWO APPROACHES
 BILL OF MATERIAL

| Bar | No. | Size | Length | Shape |
|----------------------------------|-----|---------|--------|-------|
| a10(E) | 150 | #4 | 30'-9" | — |
| a11(E) | 368 | #5 | 31'-3" | — |
| a12(E) | 50 | #4 | 31'-3" | — |
| b10(E) | 184 | #4 | 29'-8" | — |
| b11(E) | 438 | #9 | 29'-9" | — |
| b12(E) | 4 | #4 | 13'-8" | — |
| d(E) | 136 | #5 | 3'-0" | J |
| d4(E) | 68 | #5 | 4'-10" | ∩ |
| e10(E) | 24 | #4 | 14'-8" | — |
| e11(E) | 4 | #8 | 29'-8" | — |
| e12(E) | 4 | #4 | 29'-8" | — |
| t(E) | 368 | #4 | 9'-9" | — |
| w(E) | 320 | #5 | 31'-3" | — |
| Concrete Superstructure | | Cu. Yd. | 361.6 | |
| Concrete Structures | | Cu. Yd. | 74.0 | |
| Reinforcement Bars, Epoxy Coated | | Pound | 78,340 | |
| Protective Coat | | Sq. Yd. | 696 | |
| Bridge Deck Grooving | | Sq. Yd. | 565 | |



VIEW E-E



| | |
|----------|-----|
| DESIGNED | AJK |
| CHECKED | KMP |
| DRAWN | AJK |
| CHECKED | KMP |

benesch
 alfred benesch & company
 Engineers • Surveyors • Planners
 205 North Michigan Avenue, Suite 2400
 Chicago, Illinois 60601
 312-565-0450

ILLINOIS DEPARTMENT OF TRANSPORTATION
 RELOCATED ILLINOIS ROUTE 13 OVER
 HARRISBURG DITCH
 F.A.P. 331 SECTION (8X-1)B
 BRIDGE APPROACH SLAB DETAILS
 (2 OF 2)

SN: 083-0060
 SALINE CO., IL.
 STA. 1013+38.50
 DATE: FEB 4, 2009