







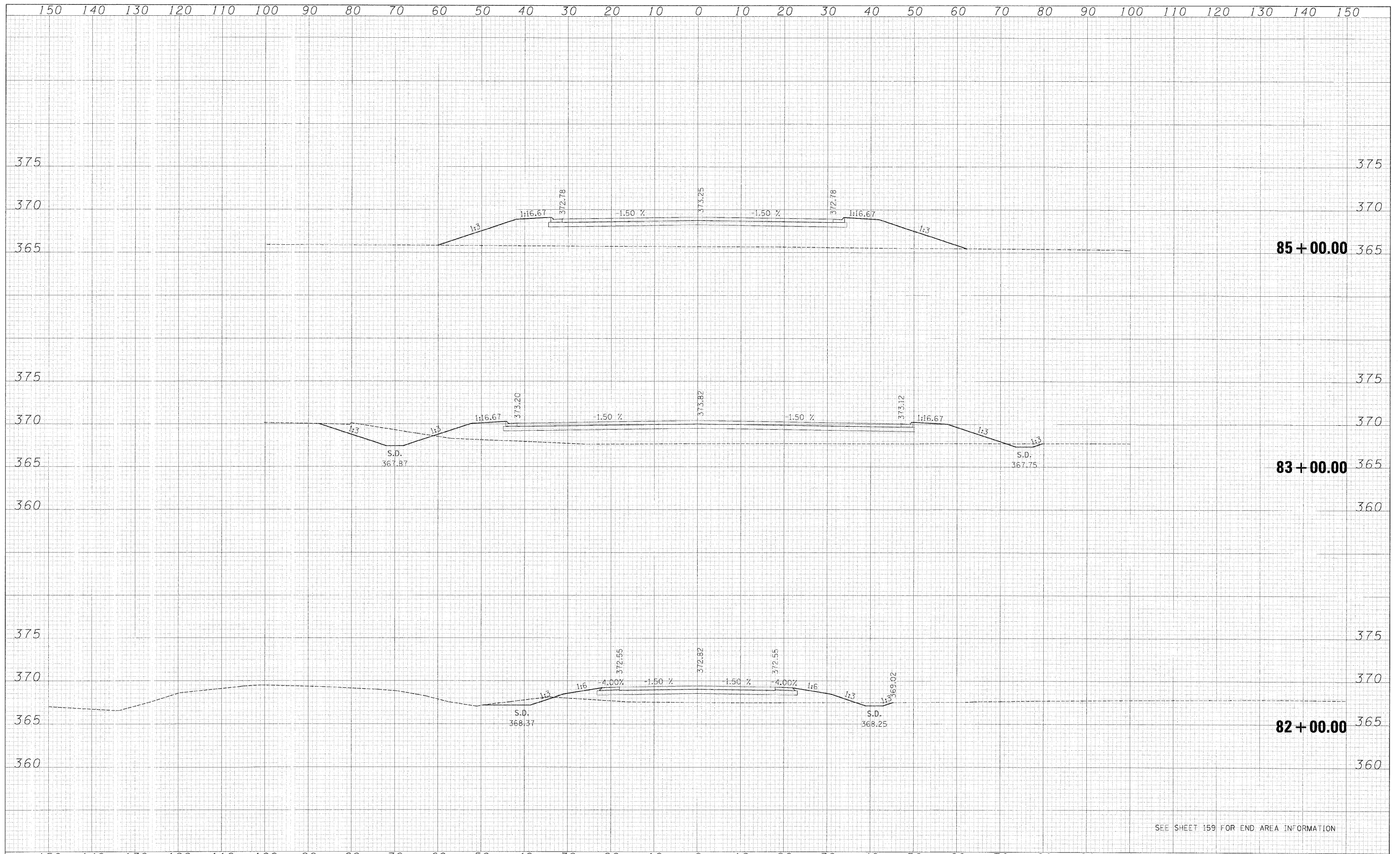






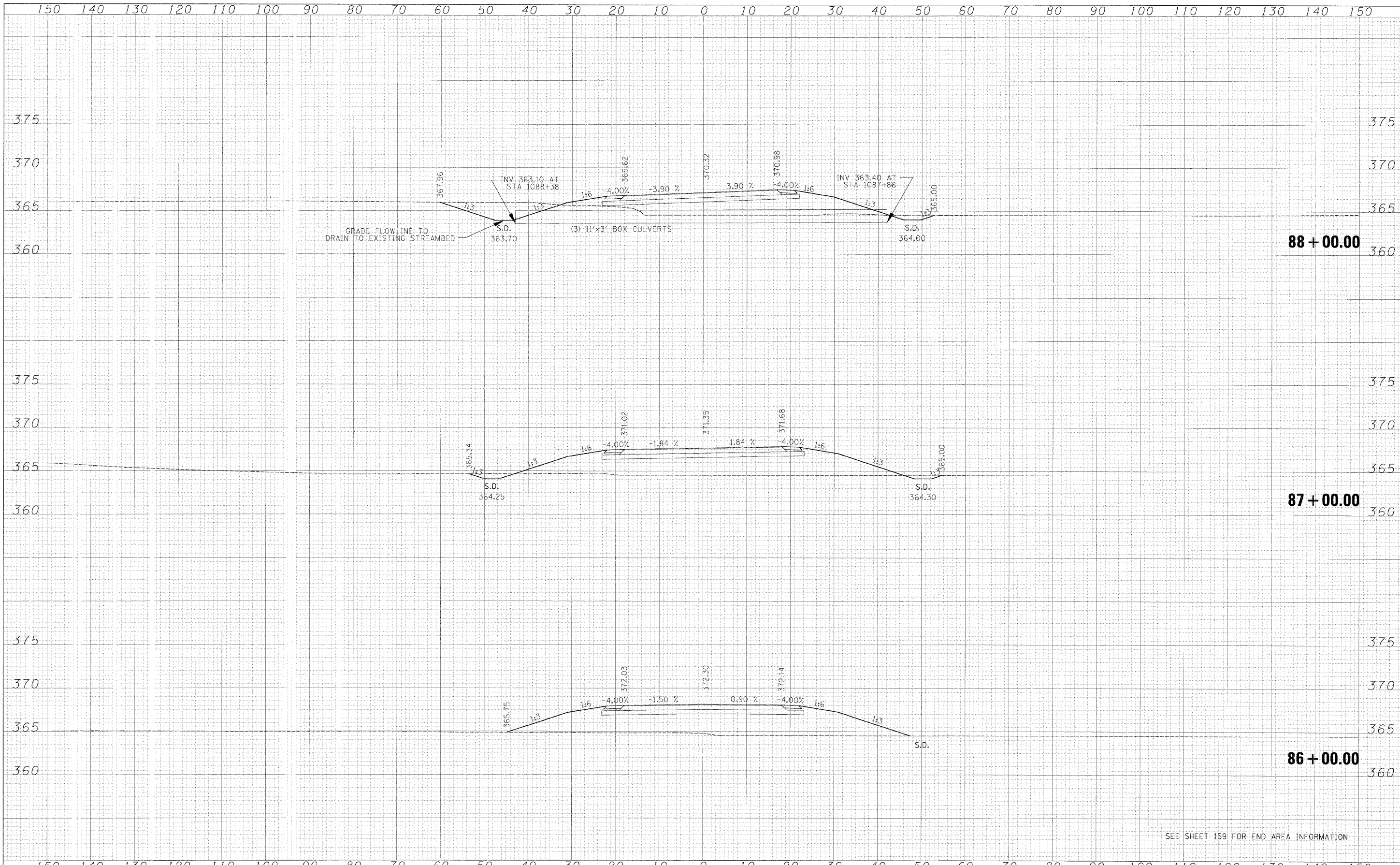
FINAL SURVEY	SUBMITTED	DATE
NOTE BOOK	PLOTTED	BY
AREAS	TEMPLATE	
CHECKED		
NO.		

ORIGINAL SURVEY	SUBMITTED	DATE
NOTE BOOK	PLOTTED	BY
AREAS	TEMPLATE	
CHECKED		
NO.		



SEE SHEET 159 FOR END AREA INFORMATION

FILE NAME - Old_IL13 West.Xsec.Sheets.dgn	USER NAME - lweigand	DESIGNED - BJW	REVISED -	STATE OF ILLINOIS DEPARTMENT OF TRANSPORTATION				CROSS SECTIONS-OLD ILL 13				F.A. RTE.	SECTION	COUNTY	TOTAL SHEET SHEETS NO.
	PLOT SCALE = 1:12	DRAWN - DWS	REVISED -									3-2, 8X-1, 18X-11B, 4-2	SALINE	205	
	PLOT DATE = 2/4/2009	CHECKED - JPN	REVISED -									CONTRACT NO. 78058			
		DATE - 02-02-09	REVISED -					SCALE: SHEET NO. OF SHEETS STA. 82+00.00 TO STA. 85+00.00				FED. ROAD DIST. NO. ILLINOIS FED. AID PROJECT			



DATE	
BY	
FINAL SURVEY	SURVEYED
NOTE BOOK NO.	PLOTTED
	TEMPLATE
	AREAS CHECKED
	AREAS CHECKED

DATE	
BY	
ORIGINAL SURVEY	SURVEYED
NOTE BOOK NO.	PLOTTED
	TEMPLATE
	AREAS CHECKED
	AREAS CHECKED

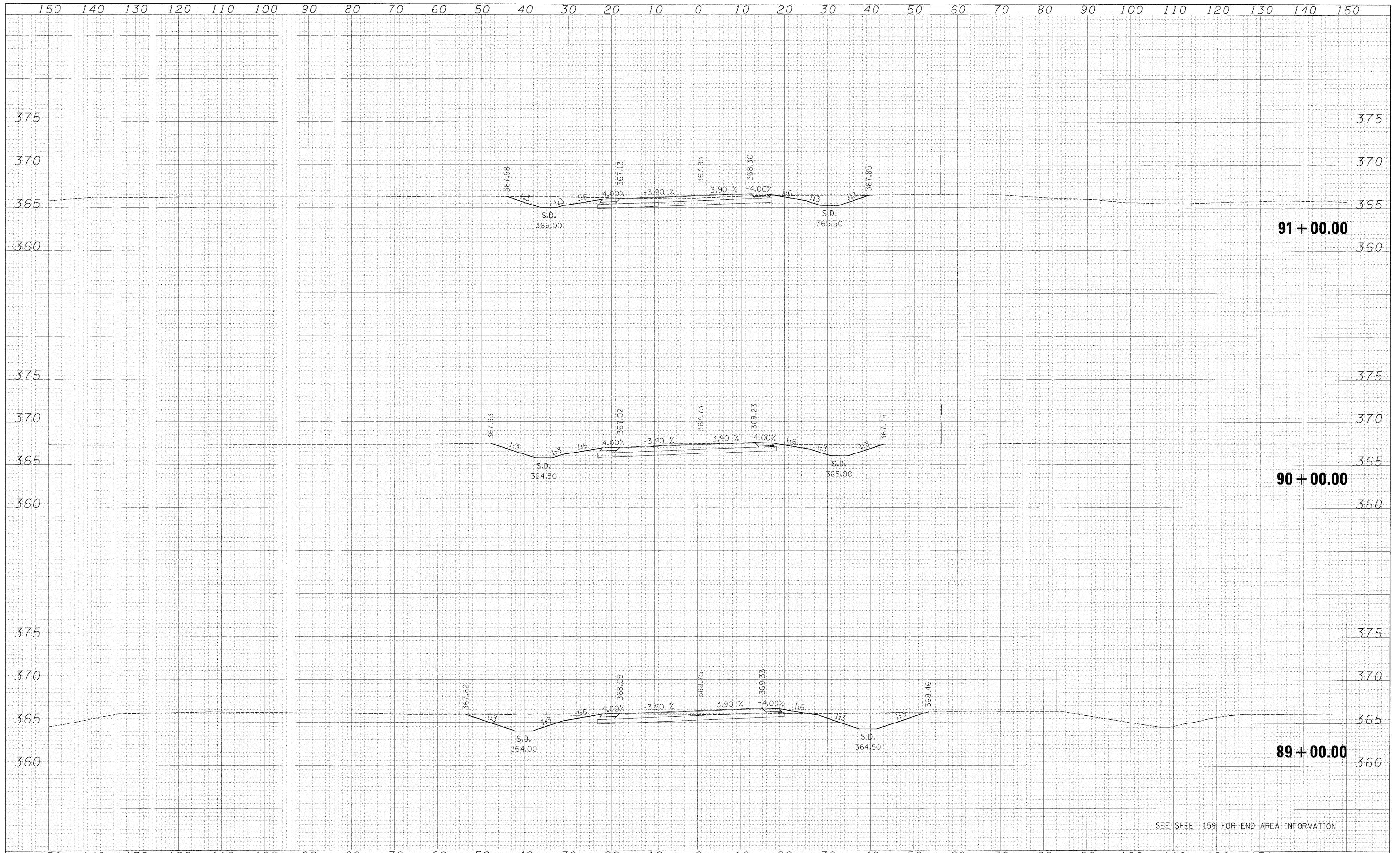
SEE SHEET 159 FOR END AREA INFORMATION

FILE NAME = Old:IL13 West.Xsec.Sheets.dgn	USER NAME = bweigand	DESIGNED - BJW	REVISED -	<b>STATE OF ILLINOIS</b> <b>DEPARTMENT OF TRANSPORTATION</b>	<b>CROSS SECTIONS-OLD ILL 13</b>			F.A. RTE.	SECTION	COUNTY	TOTAL SHEET NO.	
	PLOT SCALE = 1:10	DRAWN - DMS	REVISED -		SCALE:	SHEET NO.	OF	SHEETS	3-2, 8X-1, (8X-1)B, 4-2	SALINE	206	220
	PLOT DATE = 2/4/2009	CHECKED - JPN	REVISED -		STA. 86+00.00	TO STA. 88+00.00	CONTRACT NO. 78058					
		DATE - 02-02-09	REVISED -		FED. ROAD DIST. NO. [IL-INDIS] FED. AID PROJECT							



DATE	
BY	
FINAL SURVEY	SURVEYED
NOTE BOOK	PLOTTED
NO.	FILE NAME
	AREAS CHECKED

DATE	
BY	
ORIGINAL SURVEY	SURVEYED
NOTE BOOK	PLOTTED
NO.	FILE NAME
	AREAS CHECKED

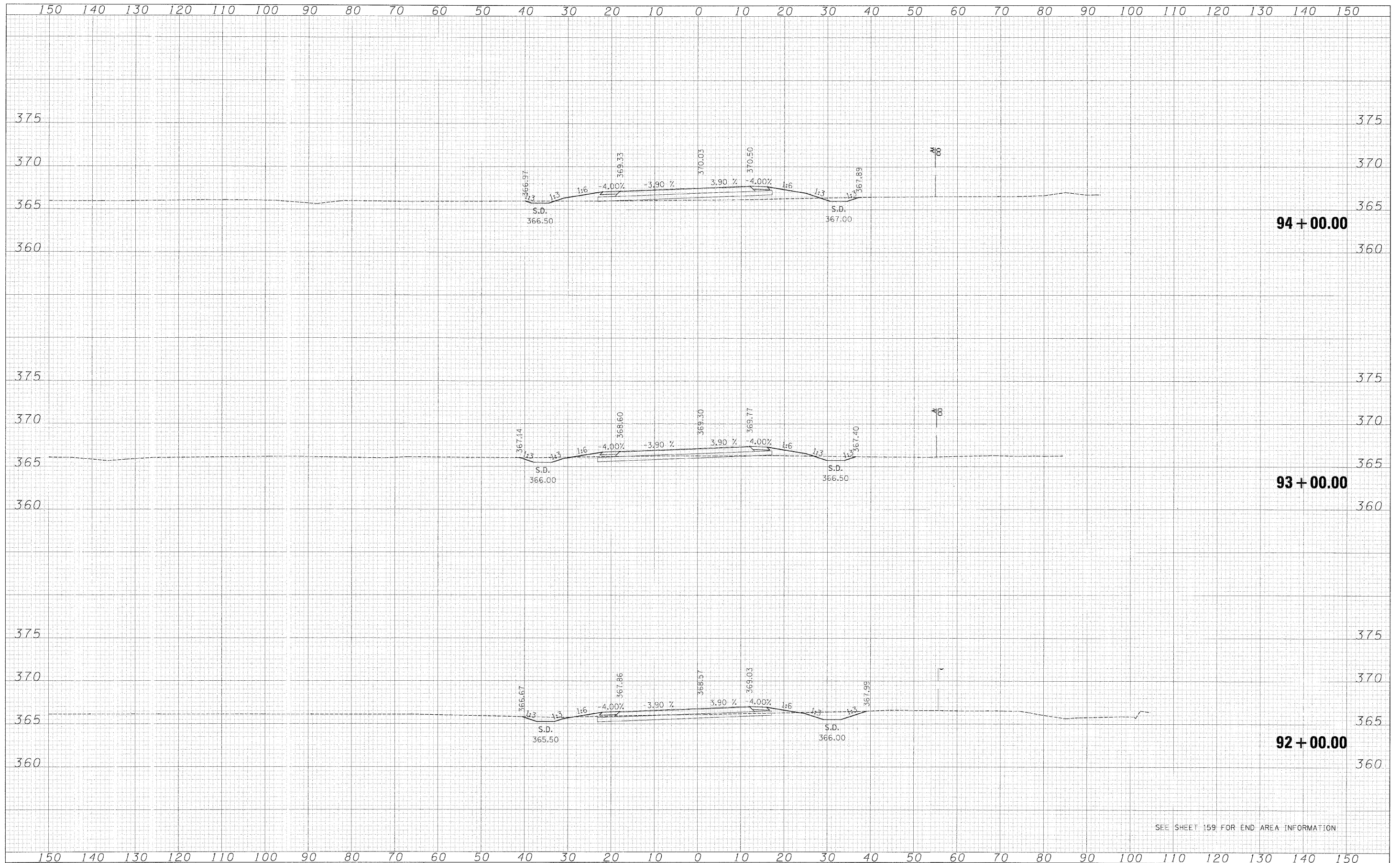


SEE SHEET 159 FOR END AREA INFORMATION

FILE NAME = Old Ill 13 West.Xsec.Sheets.cgn	USER NAME = bwe:gend	DESIGNED - BJW	REVISED -	<b>STATE OF ILLINOIS DEPARTMENT OF TRANSPORTATION</b>	<b>CROSS SECTIONS-OLD ILL 13</b>			F.A. RTE.	SECTION	COUNTY	TOTAL SHEETS	SHEET NO.
	PLT SCALE = 1:10	DRAWN - DMS	REVISED -		SCALE:	SHEET NO.	OF	SHEET'S	3-2, 8X-1, 4X-11B, 4-2	SALINE	207	220
	PLT DATE = 2/4/2009	CHECKED - JPN	REVISED -		STA. 89+00.00	TO STA. 91+00.00	CONTRACT NO. 78058					
		DATE - 02-02-09	REVISED -				FED. ROAD DIST. NO. ILLINOIS FED. AID PROJECT					

DATE	
BY	
NO.	
FINAL SURVEY	SURVEYED
NOTE BOOK	PLotted
AREAS CHECKED	TEMPLATE
	AREAS CHECKED

DATE	
BY	
NO.	
ORIGINAL SURVEY	SURVEYED
NOTE BOOK	PLotted
AREAS CHECKED	TEMPLATE
	AREAS CHECKED



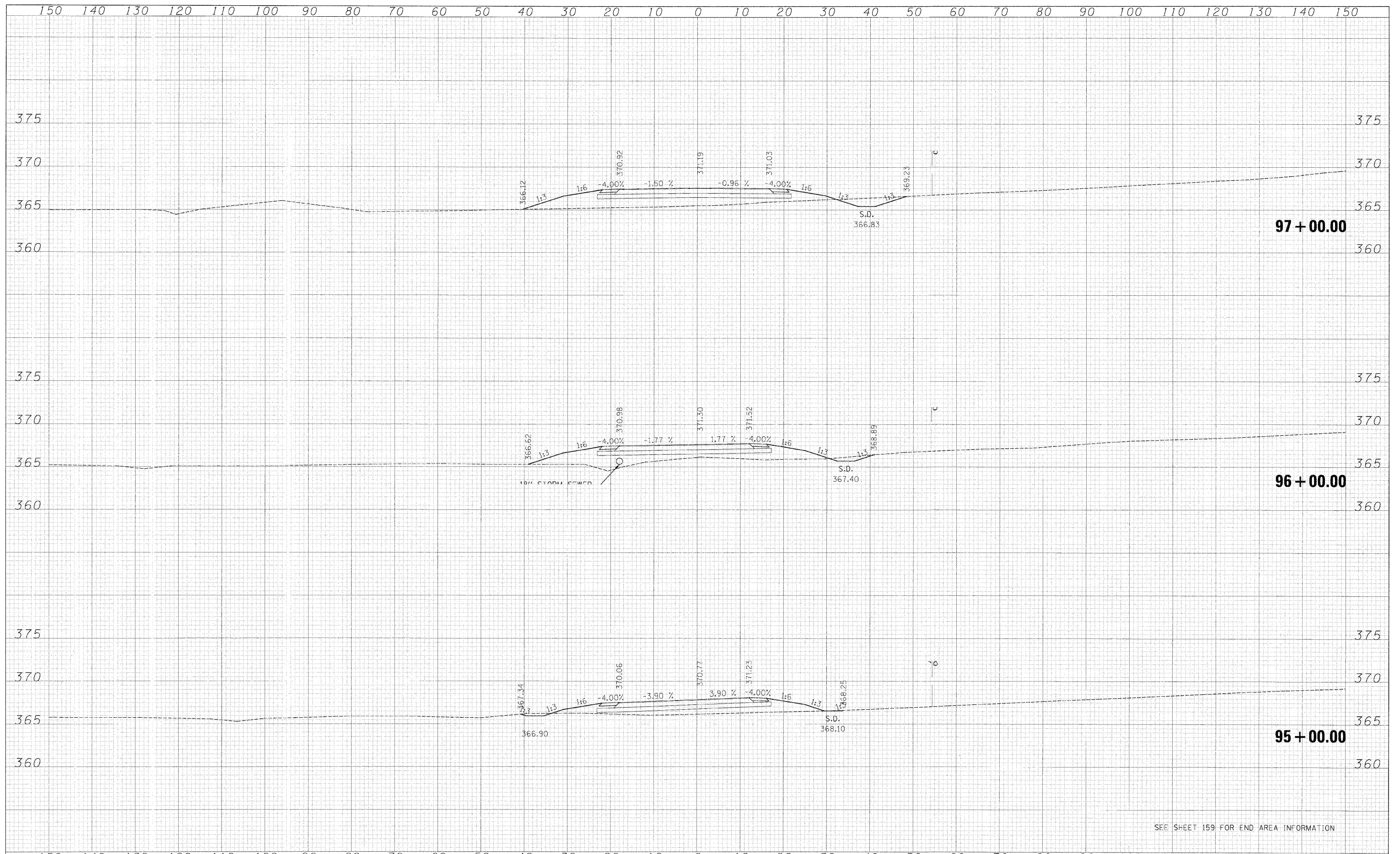
SEE SHEET 159 FOR END AREA INFORMATION

FILE NAME = Old_IL13_West_Xsec_Sheets.dgn	USER NAME = bweigend	DESIGNED - BJW	REVISED -	<p align="center"><b>STATE OF ILLINOIS</b> <b>DEPARTMENT OF TRANSPORTATION</b></p>	CROSS SECTIONS-OLD ILL 13				F.A. RTE.	SECTION	COUNTY	TOTAL SHEETS	SHEET NO.
	PLOT SCALE = 1:10	DRAWN - DMS	REVISED -		3-2, 8X-1, (8X-1)B, 4-2	SALINE	208	220					
	PLOT DATE = 2/4/2009	CHECKED - JPN	REVISED -		SCALE: SHEET NO. OF SHEETS STA. 92+00.00 TO STA. 94+00.00				FED. ROAD DIST. NO.	ILLINOIS FED. AID PROJECT	CONTRACT NO. 78058		
		DATE - 02-02-09	REVISED -										



DATE	
BY	
SERVICES	
PLOTTED	
TEMPLATE	
AREAS	
CHECKED	
NO.	

DATE	
BY	
SERVICES	
PLOTTED	
TEMPLATE	
AREAS	
CHECKED	
NO.	

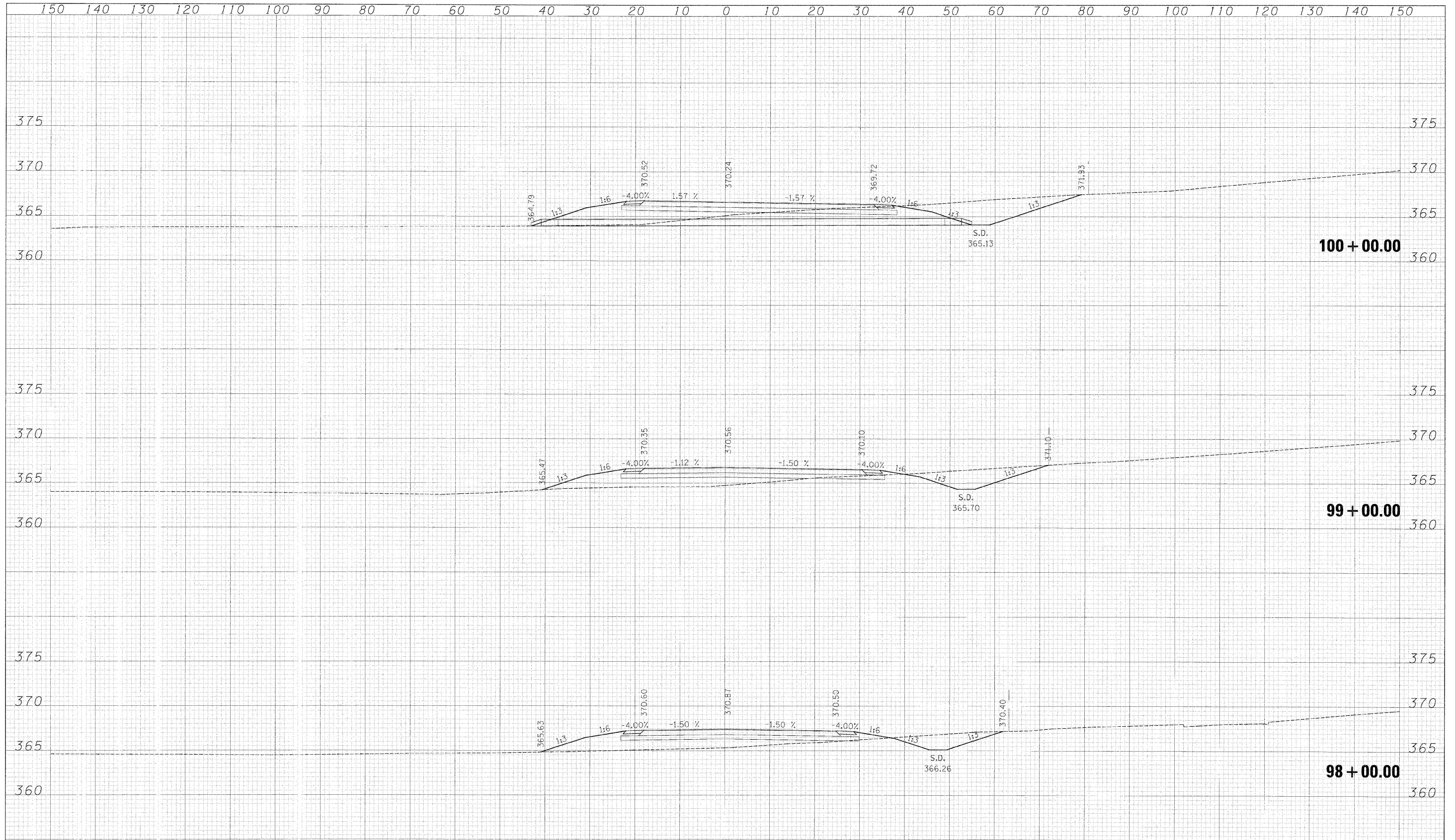


SEE SHEET 159 FOR END AREA INFORMATION

FILE NAME = Old.J1.13 West Xsec.Sheets.dgn	USER NAME = bwaigend	DESIGNED - BJW	REVISED -	<b>STATE OF ILLINOIS</b> <b>DEPARTMENT OF TRANSPORTATION</b>	<b>CROSS SECTIONS-OLD ILL 13</b>			F.A. RTE.	SECTION	COUNTY	TOTAL SHEETS	SHEET NO.
		DRAWN - DMS	REVISED -		3-2, 8X-1, (8X-1)B, 4-2	SALINE	209	220				
PLOT SCALE = 1:16		CHECKED - JPN	REVISED -		CONTRACT NO. 78058							
PLOT DATE = 2/4/2009		DATE - 02-02-09	REVISED -		SCALE:	SHEET NO.	OF	SHEETS	STA. 95+00.00	TO STA. 97+00.00	FED. ROAD DIST. NO.	ILLINOIS FED. AID PROJECT

DATE	
BY	
FINAL SURVEY NO. _____	
NOTE BOOK NO. _____	
SURVEYED _____	
PLOTTED _____	
TEMPERATURE _____	
AREAS CHECKED _____	

DATE	
BY	
ORIGINAL SURVEY NO. _____	
NOTE BOOK NO. _____	
SURVEYED _____	
PLOTTED _____	
TEMPERATURE _____	
AREAS CHECKED _____	



SEE SHEET 159 FOR FND AREA INFORMATION

FILE NAME = D:\JL13 West_Xsec_Sheets.dgn	USER NAME = bweigand	DESIGNED - BJW	REVISED -	<b>STATE OF ILLINOIS DEPARTMENT OF TRANSPORTATION</b>	<b>CROSS SECTIONS-OLD ILL 13</b>				F.A. RTE.	SECTION	COUNTY	TOTAL SHEETS	SHEET NO.
PLLOT SCALE = 1:10	PLLOT DATE = 2/4/2009	DRAWN - DMS	REVISED -		SCALE:	SHEET NO.	OF SHEETS	STA. 98+00.00	TO STA. 100+00.00	3-2, 8X-1, (8X-1)B, 4-2	SALINE	210	220
		CHECKED - JPN	REVISED -		CONTRACT NO. 78058								
		DATE - 02-02-09	REVISED -	FED. ROAD DIST. NO. ILLINOIS FED. AID PROJECT									











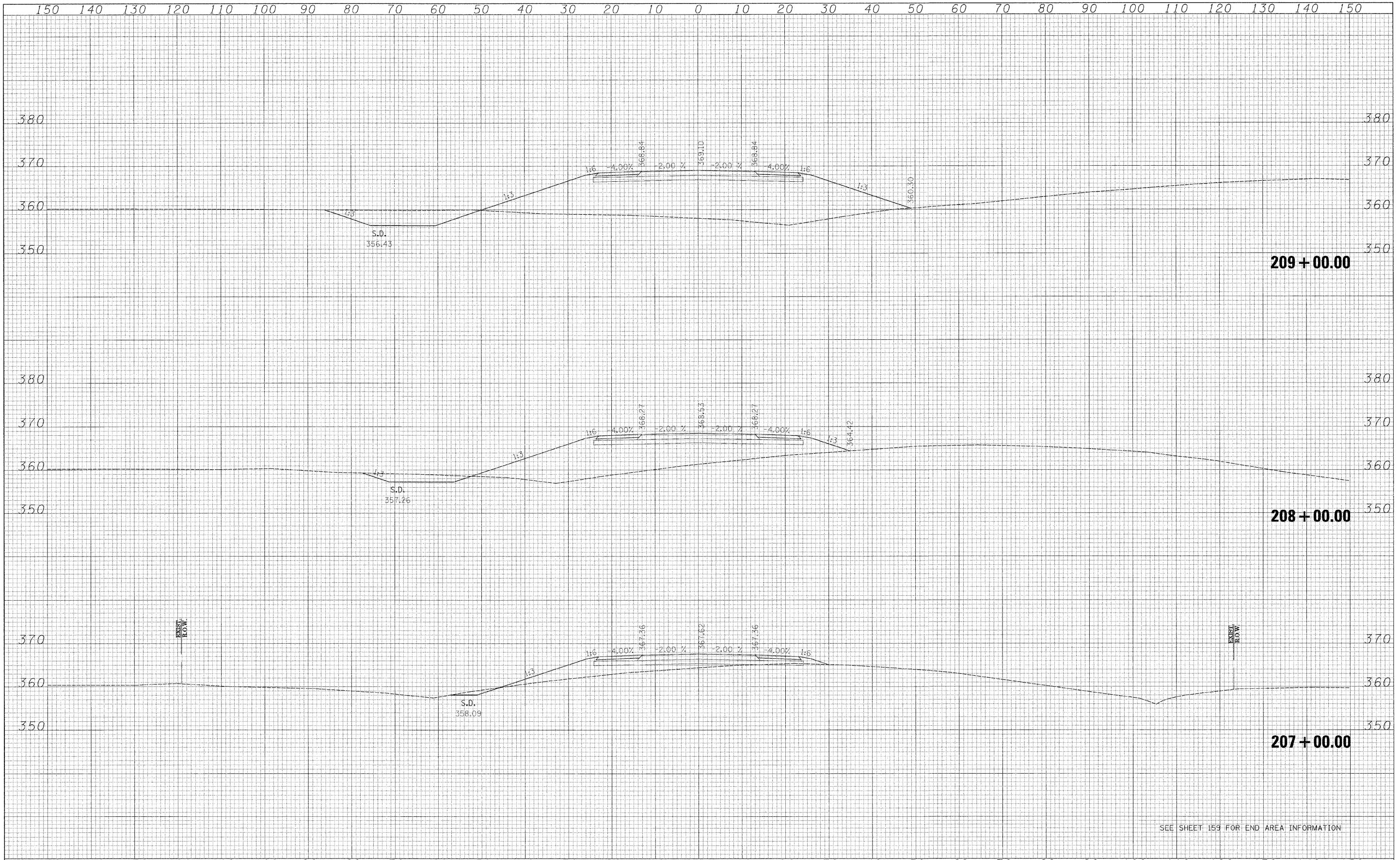












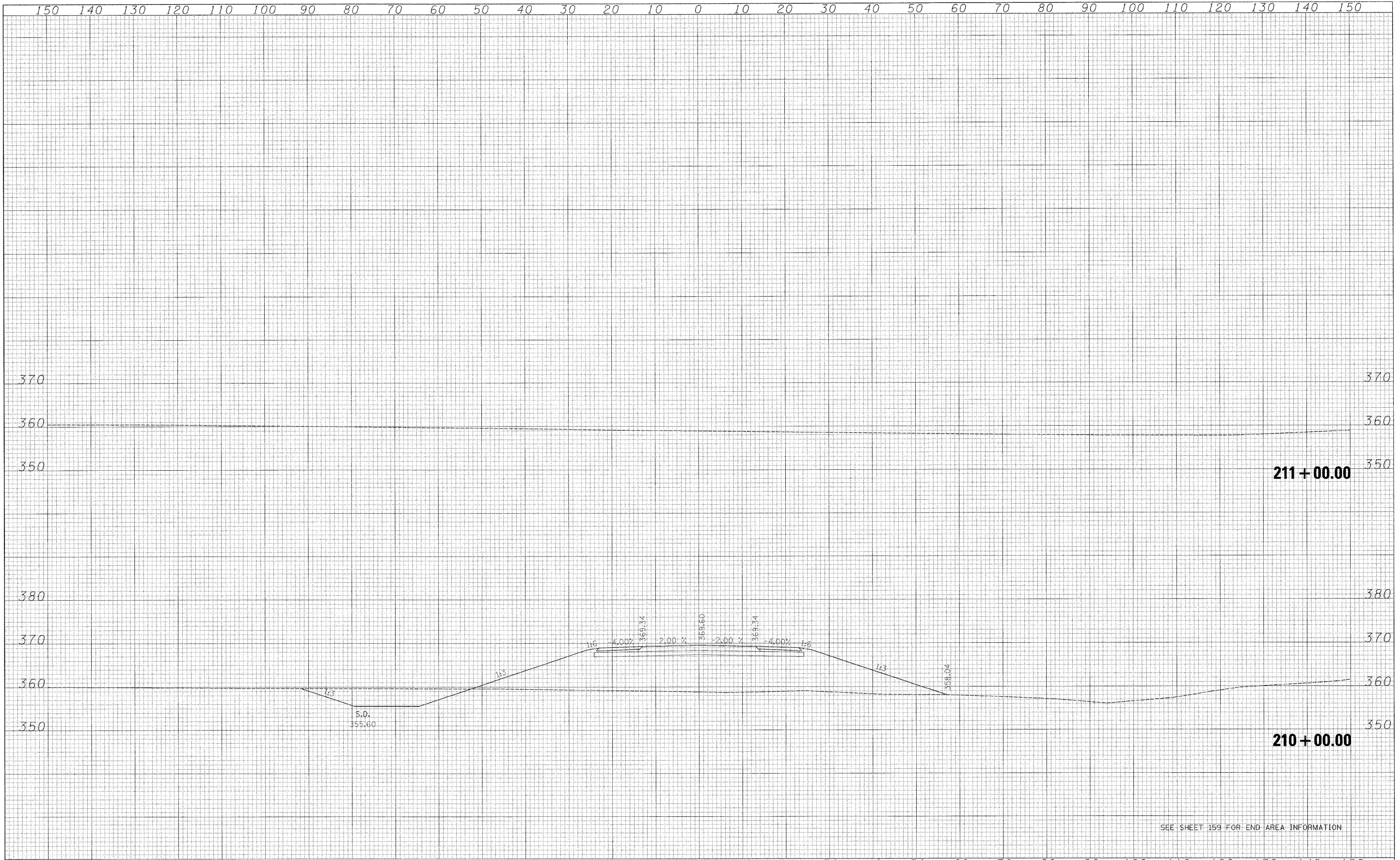
DATE \_\_\_\_\_  
 BY \_\_\_\_\_  
 SURVEYED \_\_\_\_\_  
 PLOTTED \_\_\_\_\_  
 NOTE BOOK \_\_\_\_\_  
 AREAS \_\_\_\_\_  
 AREAS CHECKED \_\_\_\_\_  
 NO. \_\_\_\_\_

DATE \_\_\_\_\_  
 BY \_\_\_\_\_  
 SURVEYED \_\_\_\_\_  
 PLOTTED \_\_\_\_\_  
 NOTE BOOK \_\_\_\_\_  
 AREAS \_\_\_\_\_  
 AREAS CHECKED \_\_\_\_\_  
 NO. \_\_\_\_\_

FILE NAME = Old_IL13_East_Xsec_Sheets.dgn	USER NAME = bwaigand	DESIGNED - BJW	REVISED -	<b>STATE OF ILLINOIS</b> <b>DEPARTMENT OF TRANSPORTATION</b>	<b>CROSS SECTIONS-OLD ILL 13</b>				F.A. RTE.	SECTION	COUNTY	TOTAL SHEETS	SHEET NO.
	PLOT SCALE = 1:12	DRAWN - DMS	REVISED -		3-2, 8X-1, (8X-1)B, 4-2	SALINE	217	220					
	PLOT DATE = 2/2/2009	CHECKED - JPN	REVISED -		CONTRACT NO. 78058								
		DATE - 02-02-09	REVISED -		SCALE:	SHEET NO.	OF	SHEETS	STA. 207+00.00	TO STA. 209+00.00	FED. ROAD DIST. NO.	ILLINOIS FED. AID PROJECT	

SEE SHEET 159 FOR END AREA INFORMATION





SEE SHEET 159 FOR END AREA INFORMATION

DATE	
BY	
FINAL SURVEY	
SURVEYED	
PLOTTED	
NOTE BOOK	
NO.	

DATE	
BY	
ORIGINAL SURVEY	
SURVEYED	
PLOTTED	
NOTE BOOK	
NO.	

FILE NAME = Old_IL13_East_Xsec_Sheets.dgn	USER NAME = bweisgard	DESIGNED - BJW	REVISED -	<b>STATE OF ILLINOIS DEPARTMENT OF TRANSPORTATION</b>	<b>CROSS SECTIONS-OLD ILL 13</b>		F.A. RTE.	SECTION	COUNTY	TOTAL SHEETS	SHEET NO.
	PLOT SCALE = 1:10	DRAWN - DMS	REVISED -		SCALE:	SHEET NO. OF SHEETS	STA. 210+00.00 TO STA. 211+00.00	3-2, 8X-1, (8X-1)B, 4-2	SALINE	218	220
	PLOT DATE = 2/2/2009	CHECKED - JPN	REVISED -							CONTRACT NO. 78058	
		DATE - 02-02-09	REVISED -							ILLINOIS FED. AID PROJECT	





