

F.A.I. RTE.	SECTION	COUNTY	TOTAL SHEETS	SHEET NO.
24	D9 CM DECK DRAIN EXT FY09-1	JOHNSON MASSAC	16	1
FED. ROAD DIST. NO. 7		ILLINOIS		

INDEX OF SHEETS

SHEET NO.	DESCRIPTION
1	COVER SHEET, INDEX OF SHEETS, STANDARDS
2	GENERAL NOTES, SIGNATURES
3	SUMMARY OF QUANTITIES
4	SCHEDULE OF QUANTITIES
5	DRAIN ELIMINATION DETAIL
6	DRAIN EXTENSION, STRUCT. NO. 044-0039 & 044-0040
7	DRAIN EXTENSION, STRUCT. NO. 044-0041
8	DRAIN EXTENSION, STRUCT. NO. 044-0043 & 044-0044
9	DRAIN EXTENSION, STRUCT. NO. 044-0045 & 044-0046
10	DRAIN EXTENSION, STRUCT. NO. 044-0047 & 044-0048
11	DRAIN EXTENSION, STRUCT. NO. 064-0016
12	DRAIN EXTENSION, STRUCT. NO. 064-0019
13	DRAIN EXTENSION, STRUCT. NO. 064-0022
14	DRAIN EXTENSION, STRUCT. NO. 064-0029
15	DRAIN EXTENSION, STRUCT. NO. 064-0037
16	DRAIN EXTENSION, STRUCT. NO. 064-0038

STATE OF ILLINOIS  
DEPARTMENT OF TRANSPORTATION  
DIVISION OF HIGHWAYS

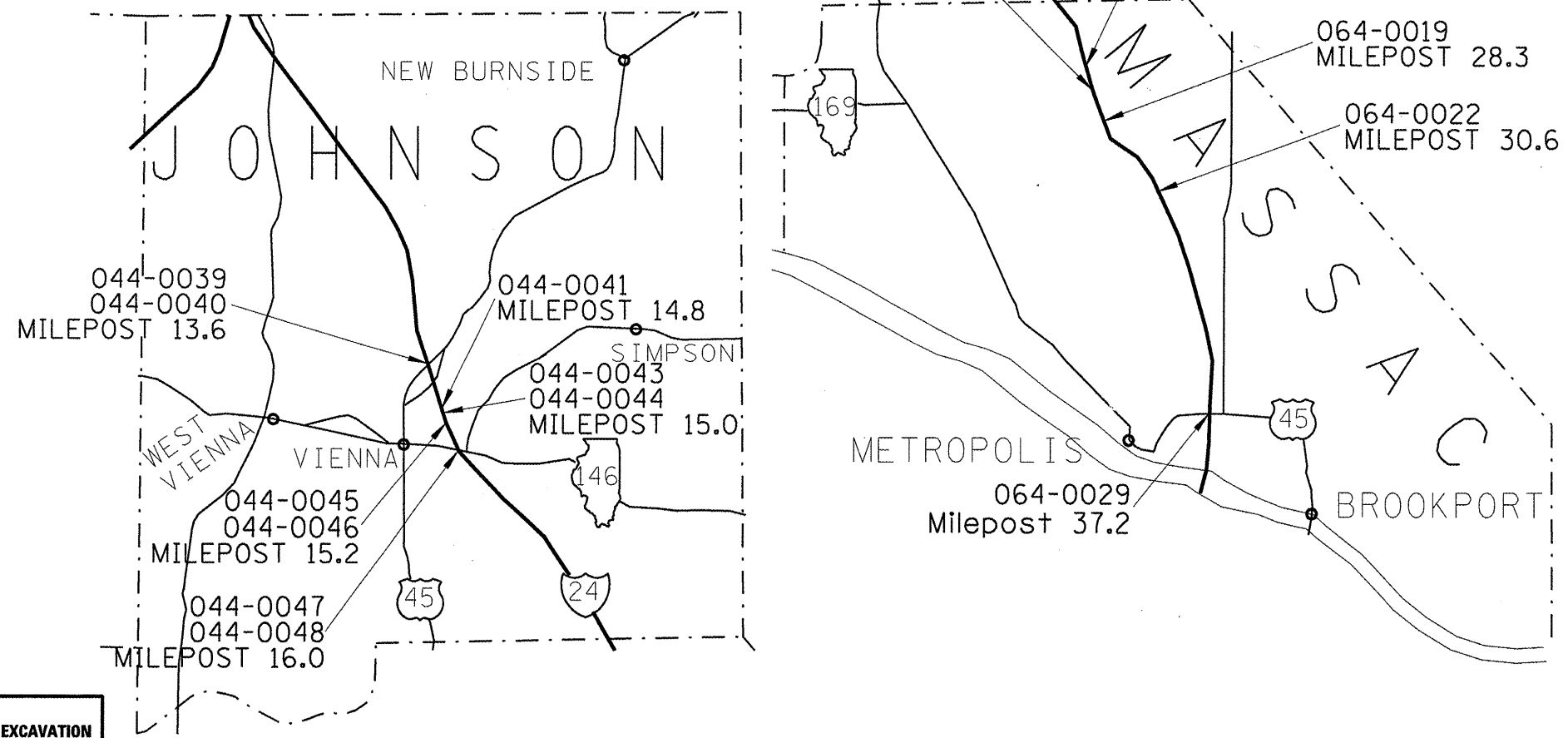
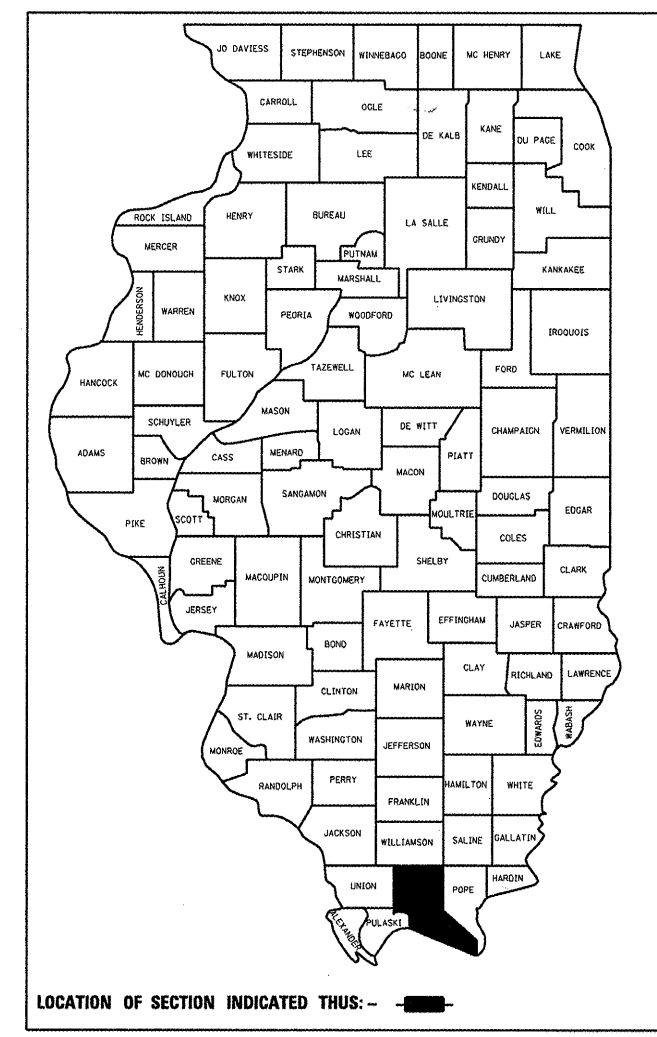
**PROPOSED  
HIGHWAY PLANS**

F.A.I. ROUTE 24  
SECTION D9 CM DECK DRAIN EXT FY09-1  
JOHNSON & MASSAC COUNTIES

C-99-029-09

STANDARDS

- 701006-03 OFF-ROAD, 2L, 2W, 2' TO 15' FROM EDGE OF PAV'T
- 701201-03 LANE CLOSURE, 2L, 2W, DAY ONLY
- 701101-02 OFF-ROAD, MULTI-LANE, 2' TO 15' FROM EDGE OF PAV'T
- 701406-05 LANE CLOSURE, MULTI-LANE
- 701901-01 TRAFFIC CONTROL DEVICES
- 701400-03



STATE OF ILLINOIS  
DEPARTMENT OF TRANSPORTATION  
DIVISION OF HIGHWAYS

SUBMITTED Jan 9, 2009  
Max Gramis  
DEPUTY DIRECTOR OF HIGHWAYS, REGION ENGINEER

March 27, 2009  
Charles J. Ingersoll  
ENGINEER OF DESIGN AND ENVIRONMENT

March 27, 2009  
Christie M. Reed  
DIRECTOR OF HIGHWAYS, CHIEF ENGINEER

J.U.L.I.E.  
JOINT UTILITY LOCATION INFORMATION FOR EXCAVATION  
1-800-892-0123  
OR 811

**PRINTED BY THE AUTHORITY  
OF THE STATE OF ILLINOIS**

PROJECT ENGINEER: CASEY N. TECKENBRUCK (618) 549-2171 CENTREX: 782-4554  
SOBUD LEADER: RITA GARDNER

CONTRACT NO. 78109

MAPS NOT TO SCALE

**GENERAL NOTES**

Plan dimensions and details relative to existing plans are subject to nominal construction variations. The Contractor shall field verify existing dimensions and details affecting new construction and make necessary approved adjustments prior to construction or ordering of materials. Such variations shall not be cause for additional compensation for a change in scope of the work, however, the Contractor will be paid for the quantity actually furnished at the unit price bid for the work.

All existing drains are 4" x 12" aluminum drains.

Commitments: None

Prepared By:	<i>Denni Hillgren</i> DISTRICT STUDIES & PLANS ENGINEER
Examined By:	<i>James Lewis Emery</i> DISTRICT LAND ACQUISITION ENGINEER
Examined By:	<i>Carrie Nelson</i> DISTRICT PROGRAM DEVELOPMENT ENGINEER
Examined By:	<i>Carl Wiley</i> DISTRICT OPERATIONS ENGINEER
Examined By:	<i>Jim Swathers</i> DISTRICT CONSTRUCTION ENGINEER
Examined By:	<i>Bruce Buehler</i> DISTRICT MATERIALS ENGINEER
Examined By:	<i>Jim Swathers</i> DISTRICT PROJECT IMPLEMENTATION ENGINEER
Examined By:	<i>Sammy [Signature]</i> ASSISTANT REGIONAL ENGINEER
Approved By:	<i>Max [Signature]</i> DEPUTY DIRECTOR OF HIGHWAYS, REGION 5 ENGINEER
DATE	Jan. 9 2009

FILE NAME =	USER NAME = gautneyrk	DESIGNED -	REVISED -	<b>STATE OF ILLINOIS DEPARTMENT OF TRANSPORTATION</b>	SCALE: _____	SHEET NO. _____ OF _____ SHEETS	STA. _____ TO STA. _____	F.A.I. RTE.	SECTION	COUNTY	TOTAL SHEETS	SHEET NO.
0:\Program Development\Studies and Plans	\Downstairs Design\ZBRIDGE MAINT\CONTRACT	DRAWN	REVISED		24	D9 CM DECK DRAIN EXT FY09-1	JOHNSON MASSAC	16	2			
	PLOT SCALE = 5.2963' / IN.	CHECKED -	REVISED -		<b>CONTRACT NO. 78109</b>							
	PLOT DATE = 12/22/2008	DATE -	REVISED -		FED. ROAD DIST. NO. ILLINOIS FED. AID PROJECT							

SUMMARY OF QUANTITIES

SFTY-2A

CONSTRUCTION TYPE CODE: SFTY-2A		100% STATE		RURAL COUNTY	
CODE NO.	ITEM DESCRIPTION	UNIT	TOTAL QUANTITY	JOHNSON	MASSAC
50300530	FLOOR DRAIN EXTENSION	EACH	153	62	91
67100100	MOBILIZATION	L SUM	1	0.5	0.5
70100450	TRAFFIC CONTROL AND PROTECTION, STANDARD 701201	L SUM	1	0.5	0.5
70100700	TRAFFIC CONTROL AND PROTECTION, STANDARD 701406	L SUM	1	0.5	0.5
X0321468	PLUG EXISTING DECK DRAINS	EACH	8	8	

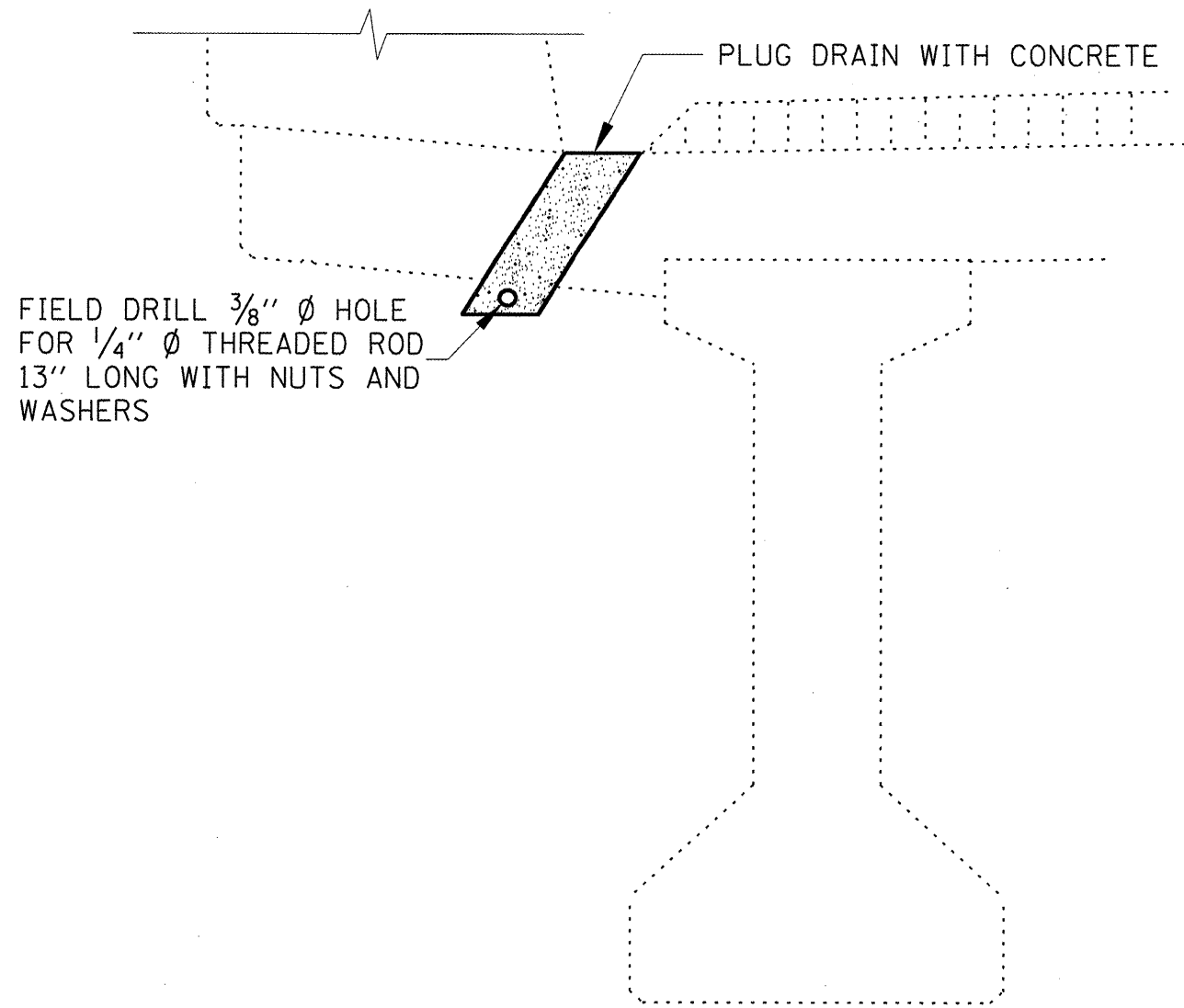
*Rev.*

DRAIN EXTENSIONS  
JOHNSON COUNTY

STRUCTURE NO.	FACILITY CARRIED	FEATURE CROSSED	QUANTITY (EACH)
044-0039	I-24	U. S. 45	4
044-0040	I-24	U. S. 45	4
044-0041	I-24	OLD BLOOMFIELD RD	2
044-0043	I-24	TUNNEL HILL TRAIL	6
044-0044	I-24	TUNNEL HILL TRAIL	6
044-0045	I-24	LITTLE CACHE CREEK	16
044-0046	I-24	LITTLE CACHE CREEK	20
044-0047	I-24	ILL. 146	2
044-0048	I-24	ILL. 146	2
TOTAL			62

DRAIN EXTENSIONS  
MASSAC COUNTY

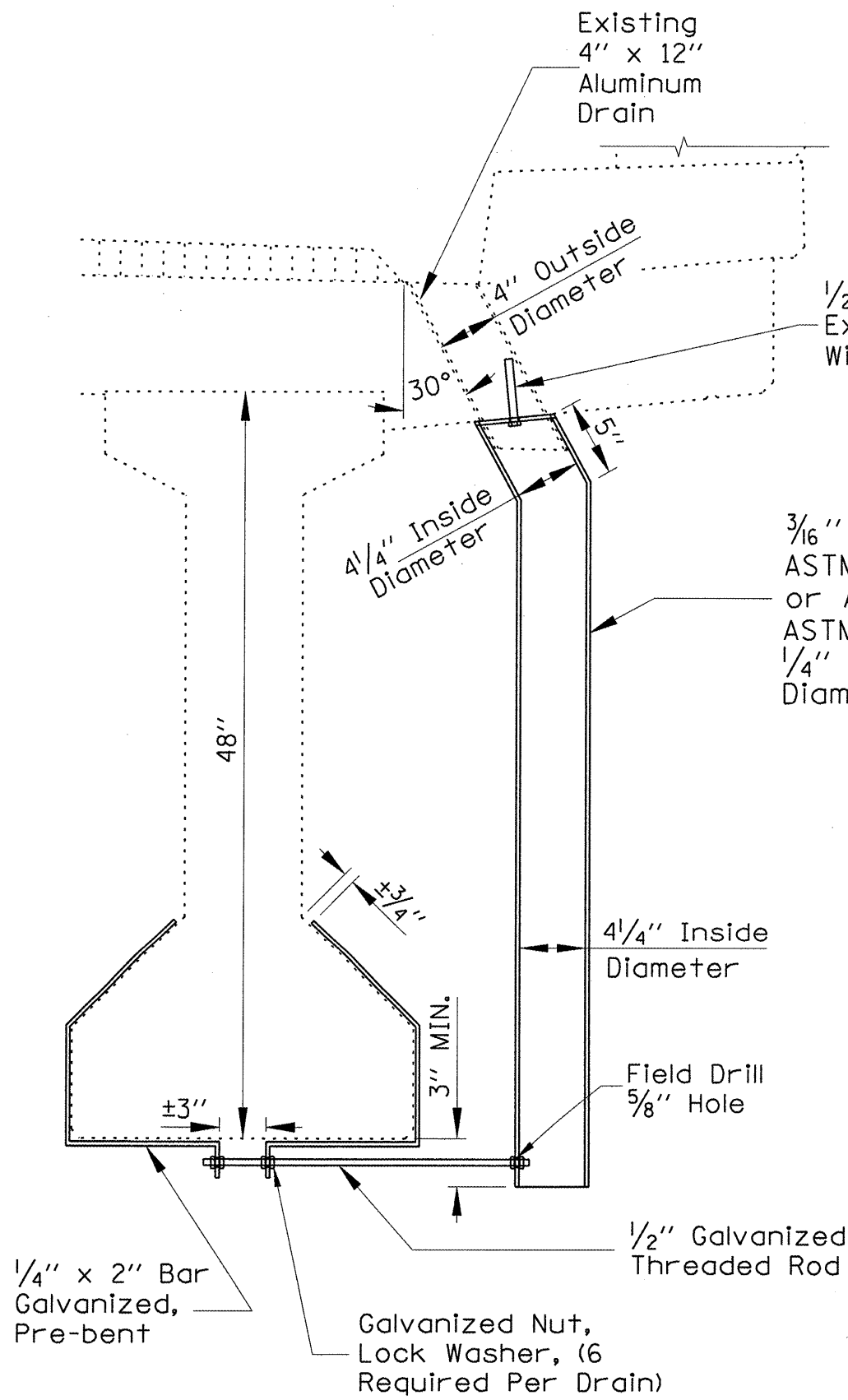
STRUCTURE NO.	FACILITY CARRIED	FEATURE CROSSED	QUANTITY (EACH)
064-0016	BIG BAY RD.	I-24	20
064-0019	BENTON RD.	I-24	8
064-0022	ROSEBUD RD.	I-24	32
064-0029	U. S. 45	I-24	8
064-0037	I-24 RAMP 160	NEW COLUMBIA DITCH	13
064-0038	I-24 RAMP 159	NEW COLUMBIA DITCH	10
TOTAL			91



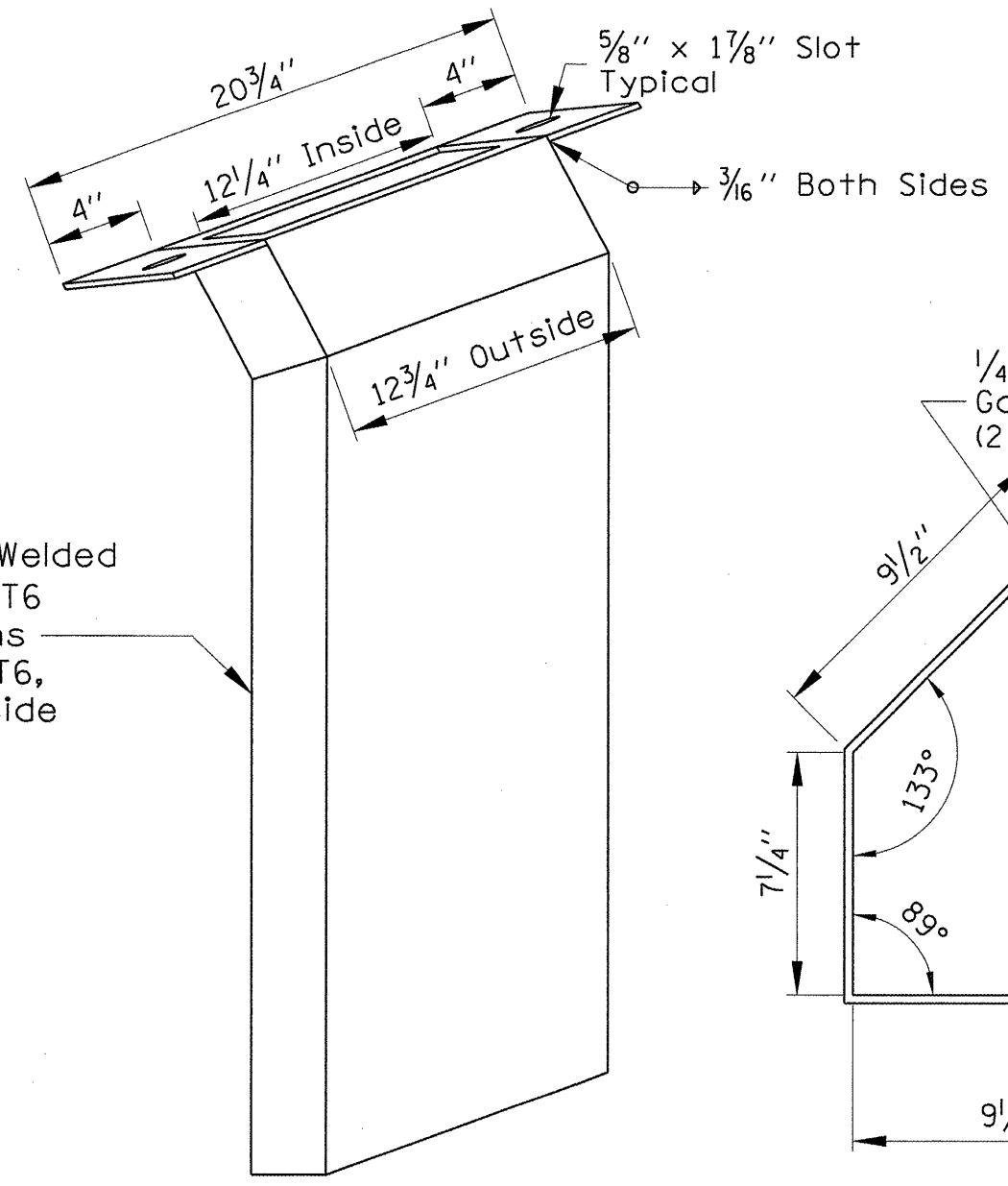
ELIMINATE DRAINS LOCATED WITHIN 5 FEET OF PIERS ON  
STRUCTURES 044-0045 AND 044-0046 ONLY.  
4 EACH STRUCTURE.

**DRAIN ELIMINATION DETAIL**  
**044-0045**  
**044-0046**

FILE NAME = D:\Program Development\Studies and Plan	USER NAME = goutheyrk	DESIGNED - ---	REVISED - ---	<b>STATE OF ILLINOIS DEPARTMENT OF TRANSPORTATION</b>	-----		F.A.I. RTE.	SECTION	COUNTY	TOTAL SHEETS	SHEET NO.
	\Downstairs Design\ZBRIDGE MAINT\CONTRACT	DRAWNAINS\78109_DR@INS .dgn	REVISED - ---		REVISED - ---	24	09 CM DECK DRAIN EXT FY09-1	JOHNSON MASSAC	16	5	
PLOT SCALE = 5.2953 ' / IN.	CHECKED - ---	REVISED - ---	REVISED - ---		SCALE: ----- SHEET NO. -- OF -- SHEETS STA. ----- TO STA. -----		<b>CONTRACT NO. 78109</b>				
PLOT DATE = 12/22/2008	DATE - -----	REVISED - ---	REVISED - ---		FED. ROAD DIST. NO. ILLINOIS FED. AID PROJECT						

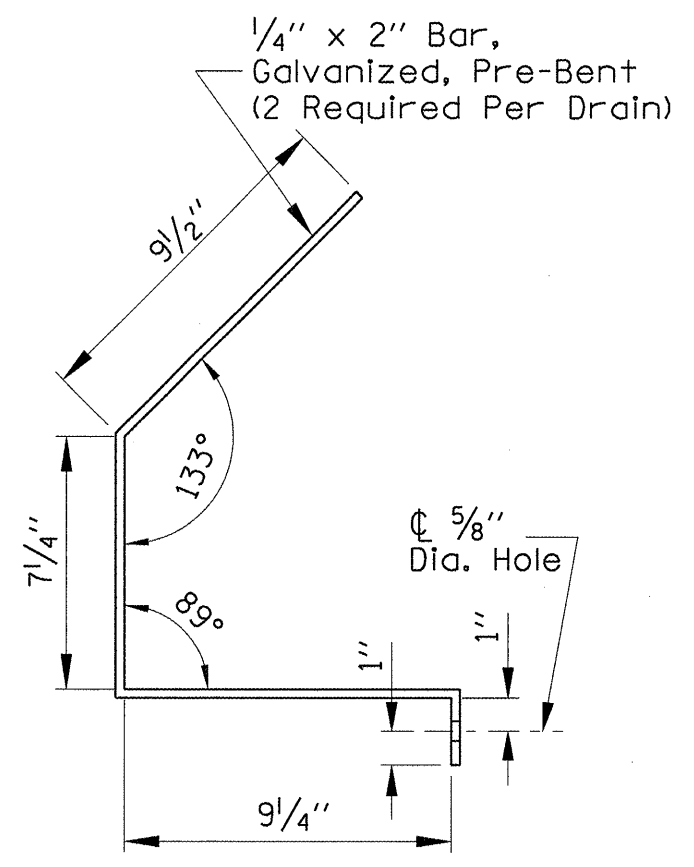


**SECTION AT DRAIN**



**FLOOR DRAIN  
EXTENSION DETAIL**

4 Locations Each Structure

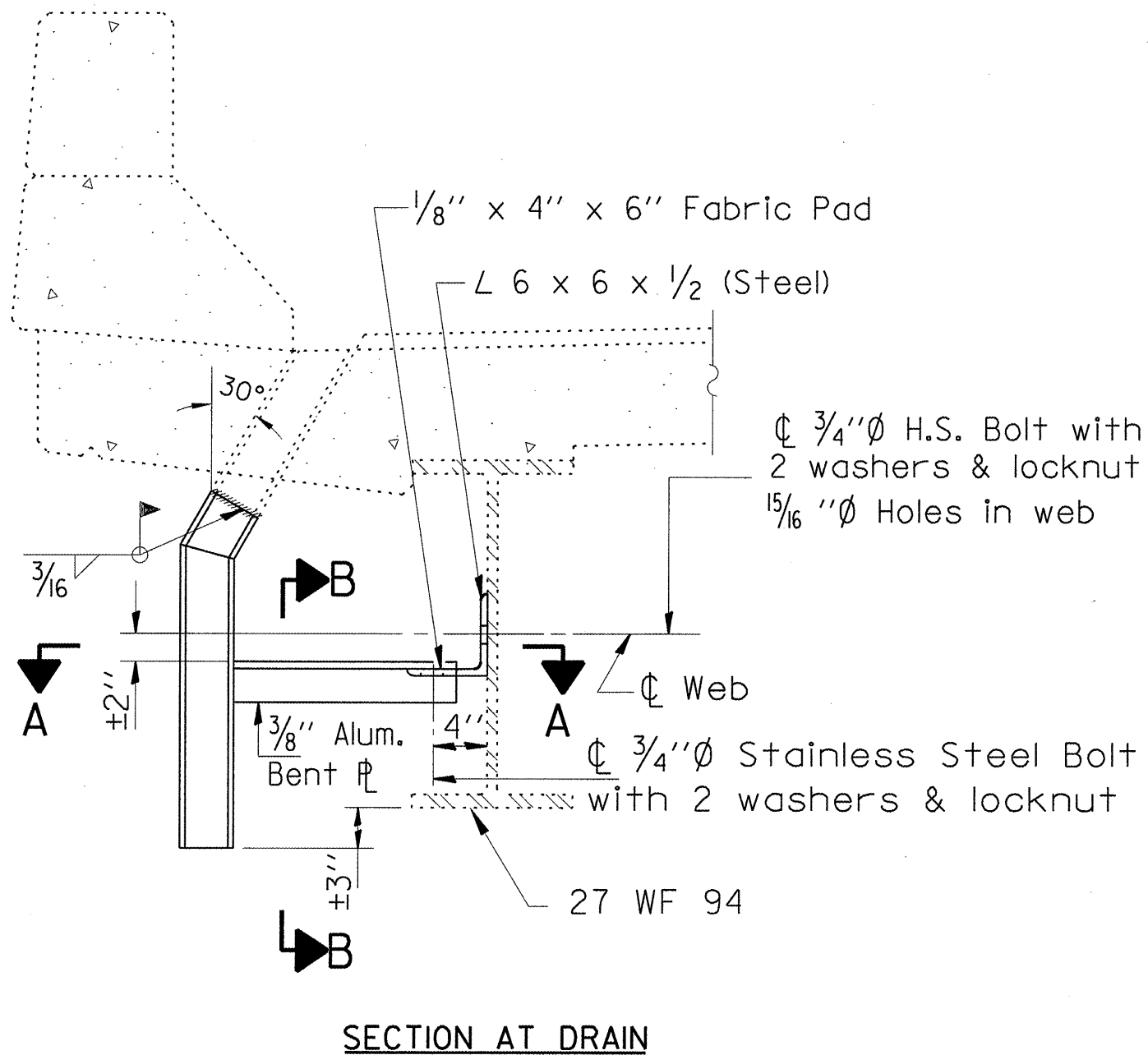


**BRACKET DETAIL**

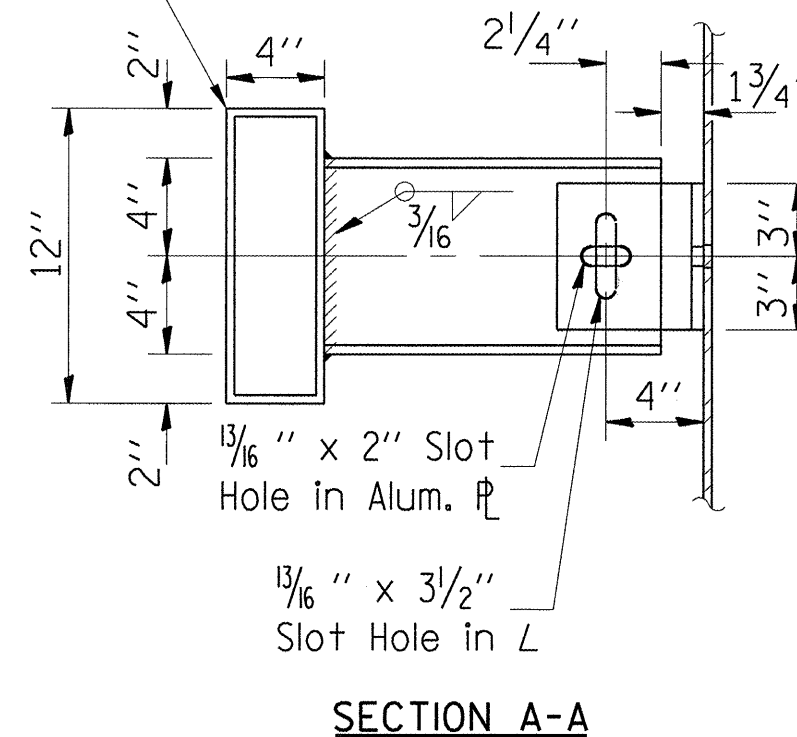
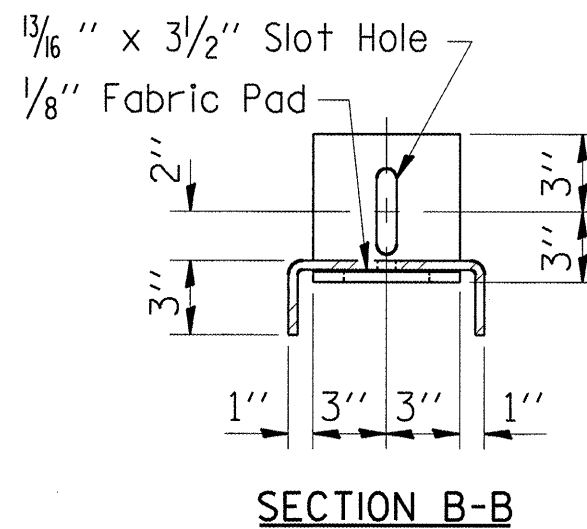
**FLOOR DRAIN EXTENSION**

044-0039  
044-0040

FILE NAME =	USER NAME = gautneyrk	DESIGNED -	REVISED -	<b>STATE OF ILLINOIS DEPARTMENT OF TRANSPORTATION</b>	F.A.I. RTE.	SECTION	COUNTY	TOTAL SHEETS	SHEET NO.
0:\Program Development\Studies and Plan	\Downstairs Design\ZBRIDGE MAINT\CONTRACT	DRWAINS\78109_DR@INS.dgn	REVISED -		24	09 CM DECK DRAIN EXT FY09-1	JOHNSON MASSAC	16	6
PLOT SCALE = 5.2953 / IN.	CHECKED -	REVISED -	REVISED -		<b>CONTRACT NO. 78109</b>				
PLOT DATE = 12/22/2008	DATE -	REVISED -	REVISED -		FED. ROAD DIST. NO. ILLINOIS FED. AID PROJECT				



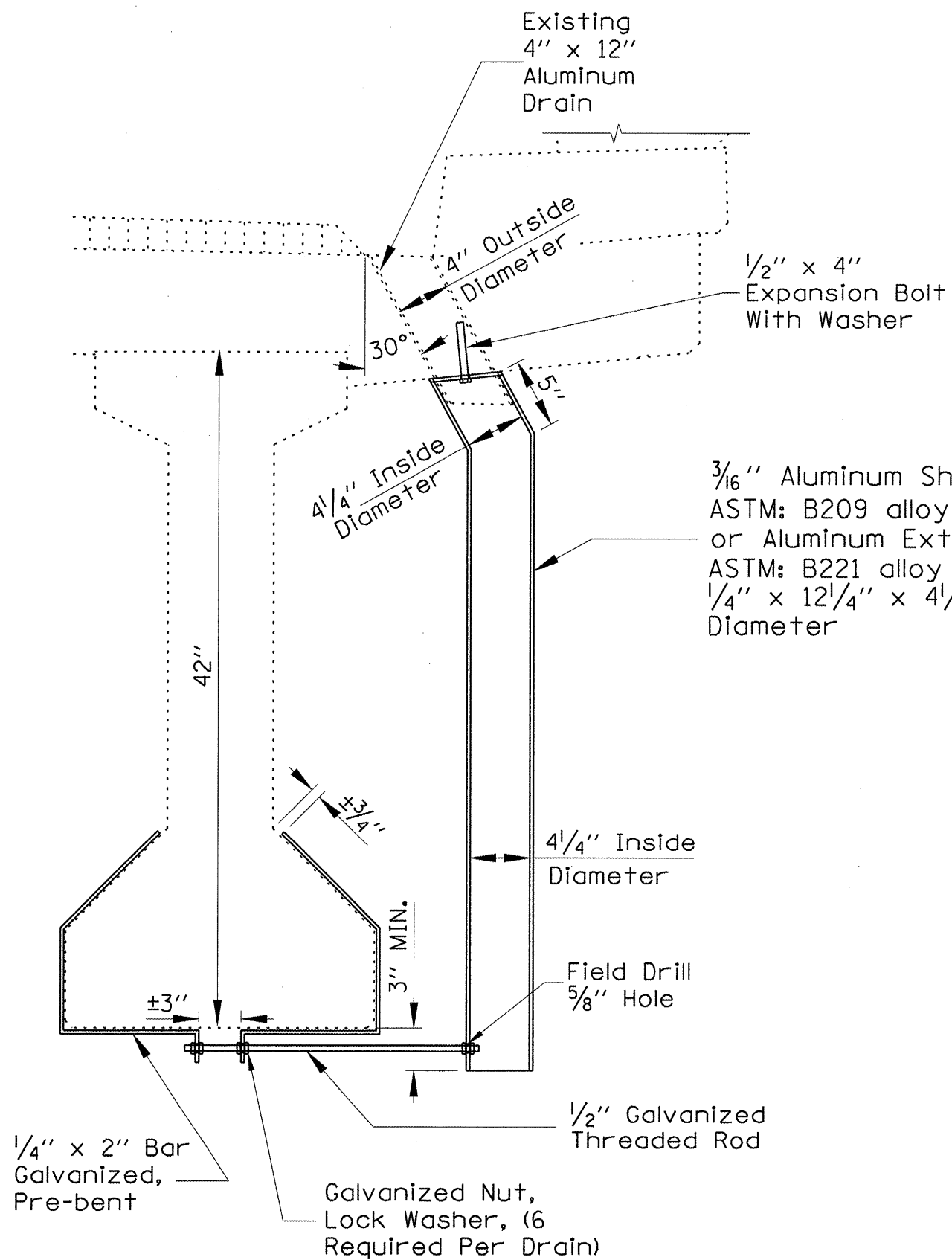
3/16" Aluminum Sheets Welded  
 ASTM: B209 alloy 6061-T6  
 or Aluminum Extrusions  
 ASTM: B221 alloy 6061-T6,



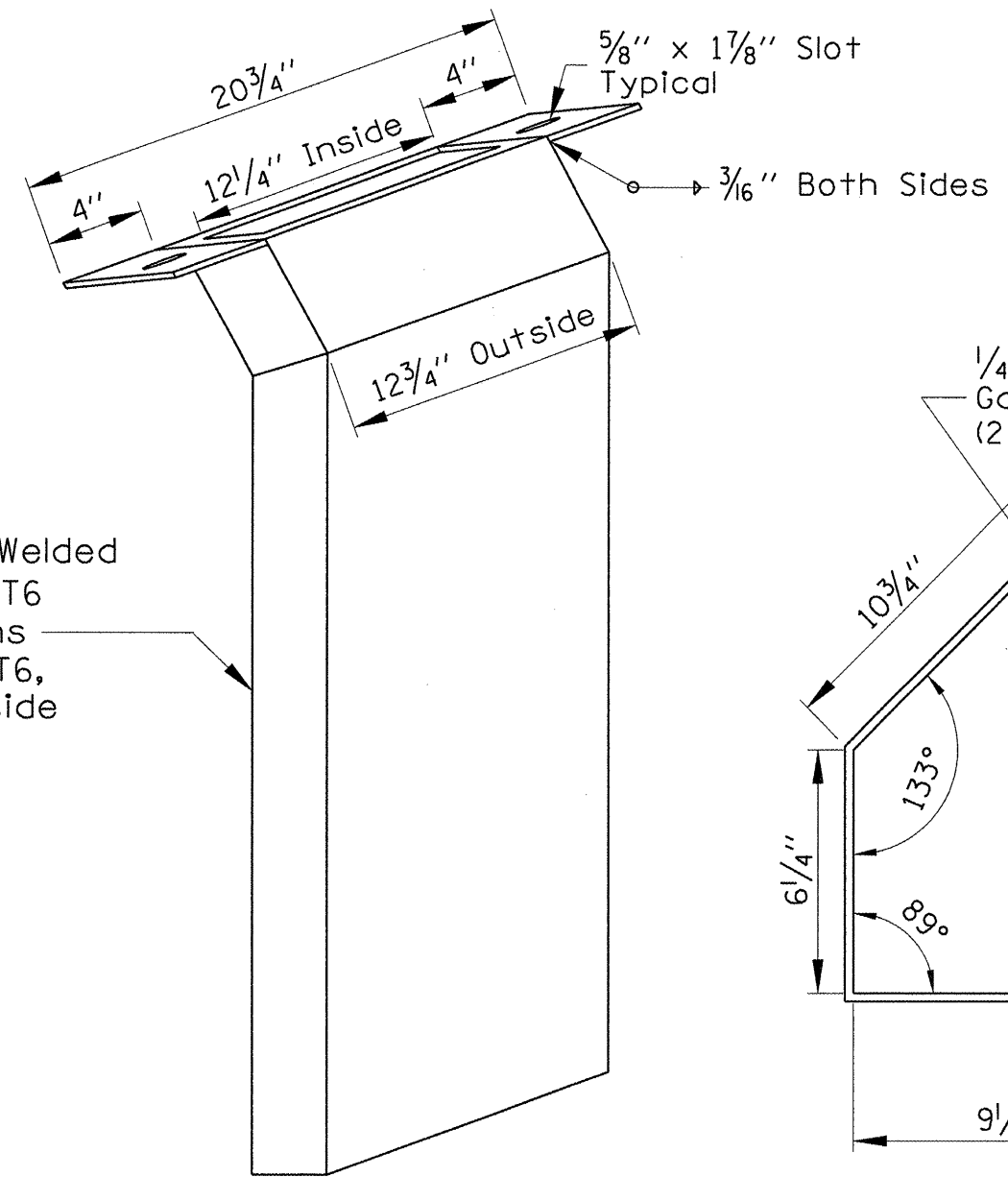
FLOOR DRAIN EXTENSION DETAIL  
 2 Locations

FLOOR DRAIN EXTENSION  
 044-004I

FILE NAME =	USER NAME = gautneyrk	DESIGNED -	REVISED -	<b>STATE OF ILLINOIS DEPARTMENT OF TRANSPORTATION</b>	SCALE: _____ SHEET NO. _____ OF _____ SHEETS STA. _____ TO STA. _____	F.A.L. RTE.	SECTION	COUNTY	TOTAL SHEETS	SHEET NO.	
D:\Program Development\Studies and Plan	XDownstairs Design\ZBRIDGE MAINT\CONTRACT	*DRAWINGS\78109_DRG\INS .dgn	REVISED -			24	09 CM DECK DRAIN EXT FY09-1	JOHNSON MASSACH	16	7	
PLOT SCALE = 5.2953' / IN.	CHECKED -	REVIS	REVISED -			CONTRACT NO. 78109					
PLOT DATE = 12/22/2008	DATE -	REVISED -	REVISED -			FED. ROAD DIST. NO. ILLINOIS FED. AID PROJECT					

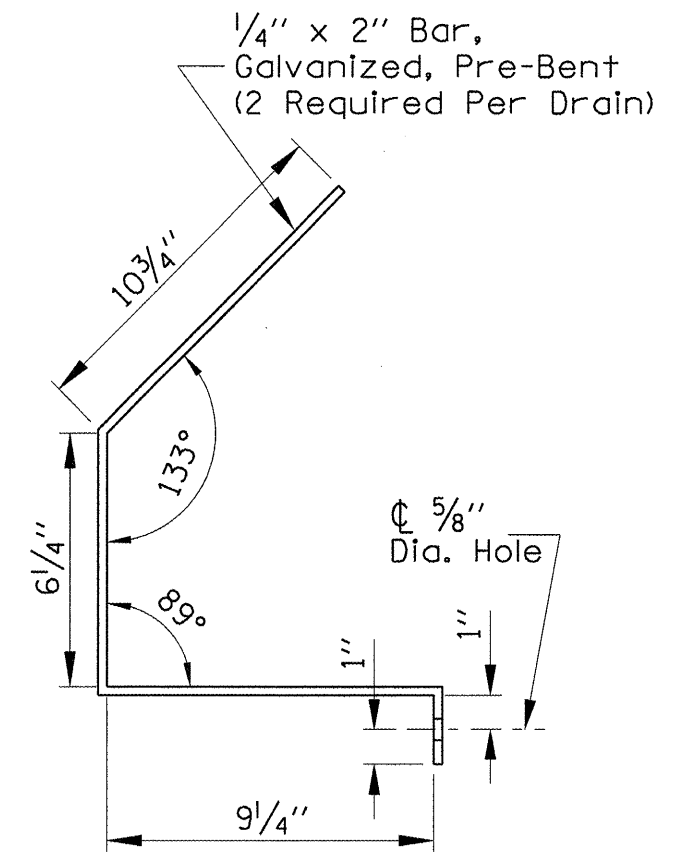


**SECTION AT DRAIN**



**FLOOR DRAIN  
EXTENSION DETAIL**

6 Locations Each Structure



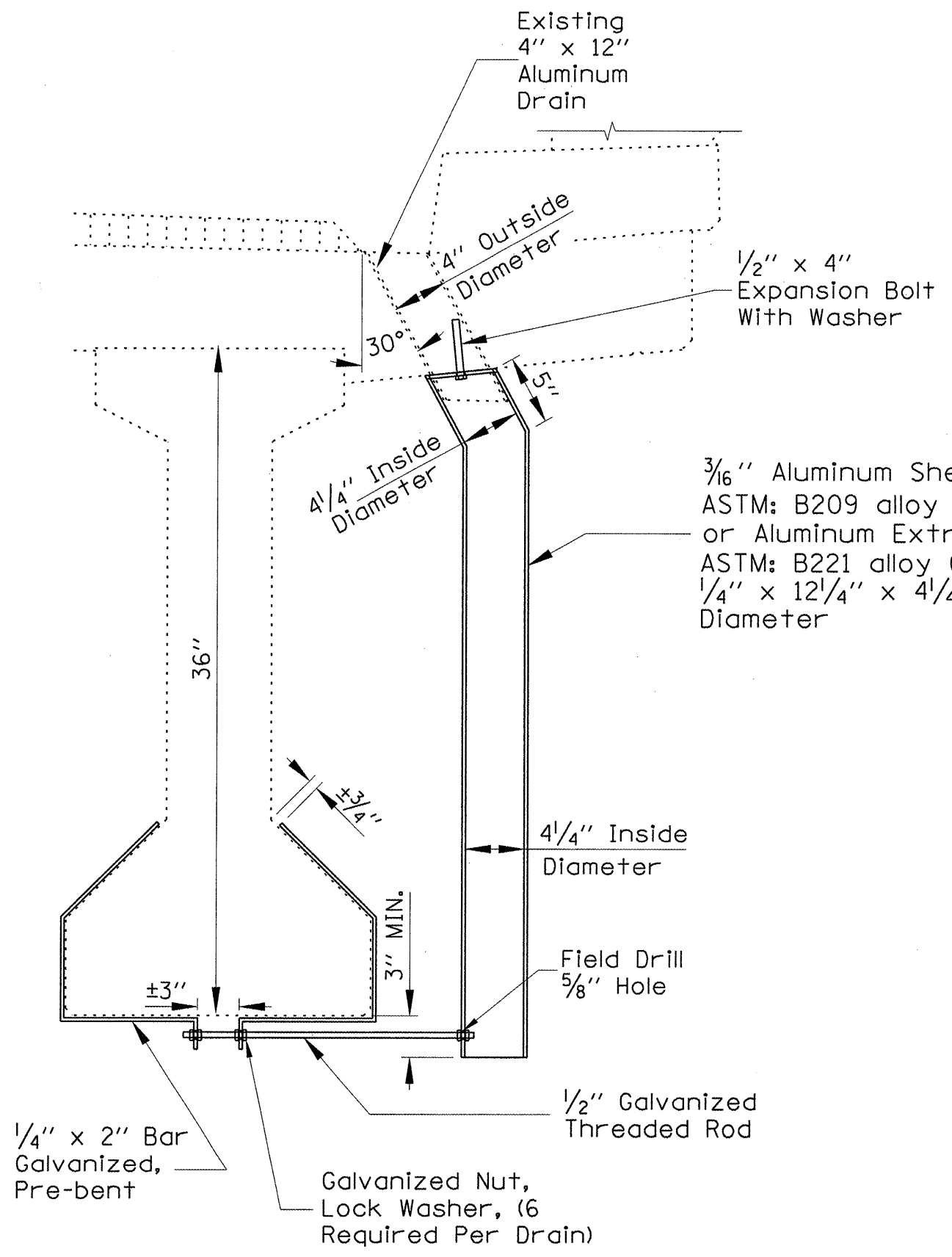
**BRACKET DETAIL**

**FLOOR DRAIN EXTENSION**

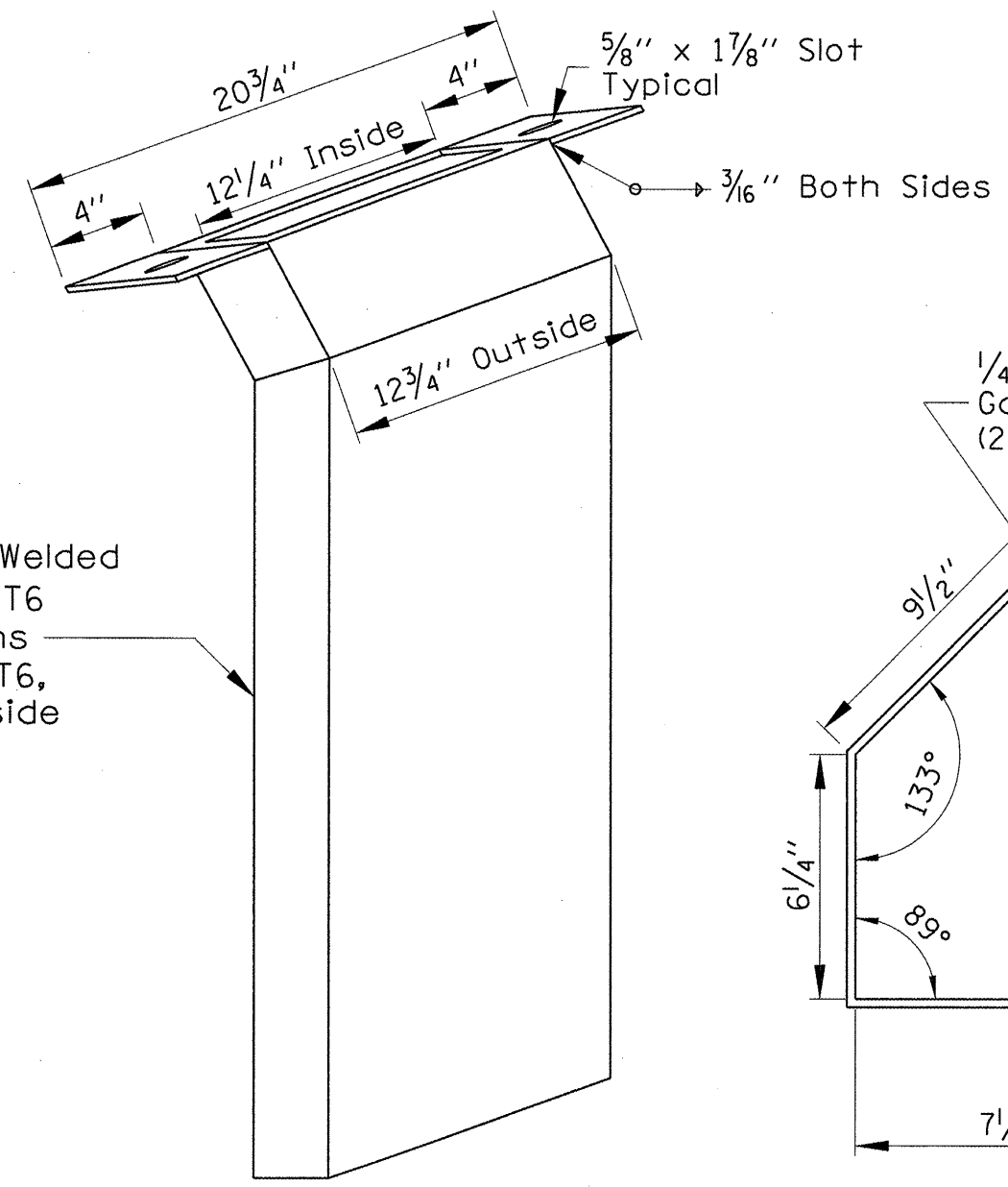
044-0043  
044-0044

FILE NAME =	USER NAME = gautneyrk	DESIGNED -	REVISED -	<b>STATE OF ILLINOIS DEPARTMENT OF TRANSPORTATION</b>	F.A.I. RTE.	SECTION	COUNTY	TOTAL SHEETS	SHEET NO.
D:\Program Development\Studies and Plan	NDownstairs Design\ZBRIDGE MAINT\CONTRACT	DRAWN	REVISED		24	09 CM DECK DRAIN EXT FY09-1	JOHNSON	16	8
PLOT SCALE = 5.2953 / IN.		CHECKED	REVISED		CONTRACT NO. 78109				
PLOT DATE = 12/22/2008		DATE	REVISED		ILLINOIS FED. AID PROJECT				
SCALE: _____ SHEET NO. _____ OF _____ SHEETS STA. _____ TO STA. _____									

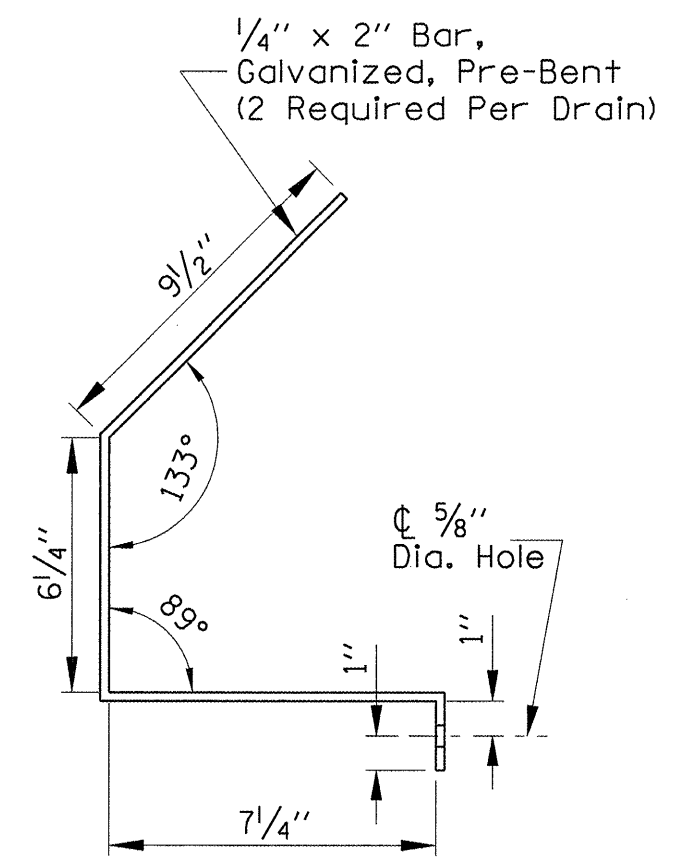




**SECTION AT DRAIN**



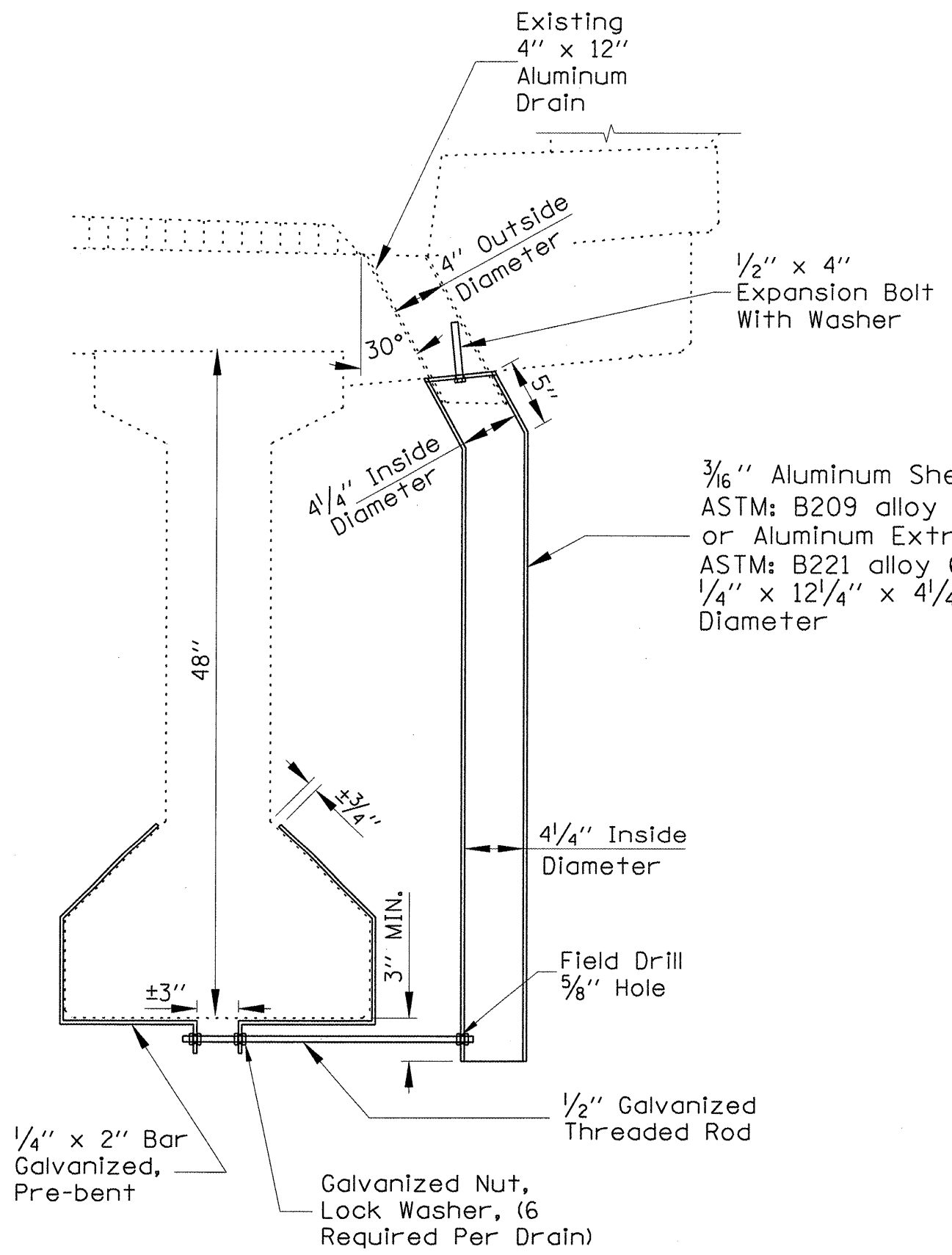
**FLOOR DRAIN  
EXTENSION DETAIL**  
16 Locations 044-0045  
20 Locations 044-0046



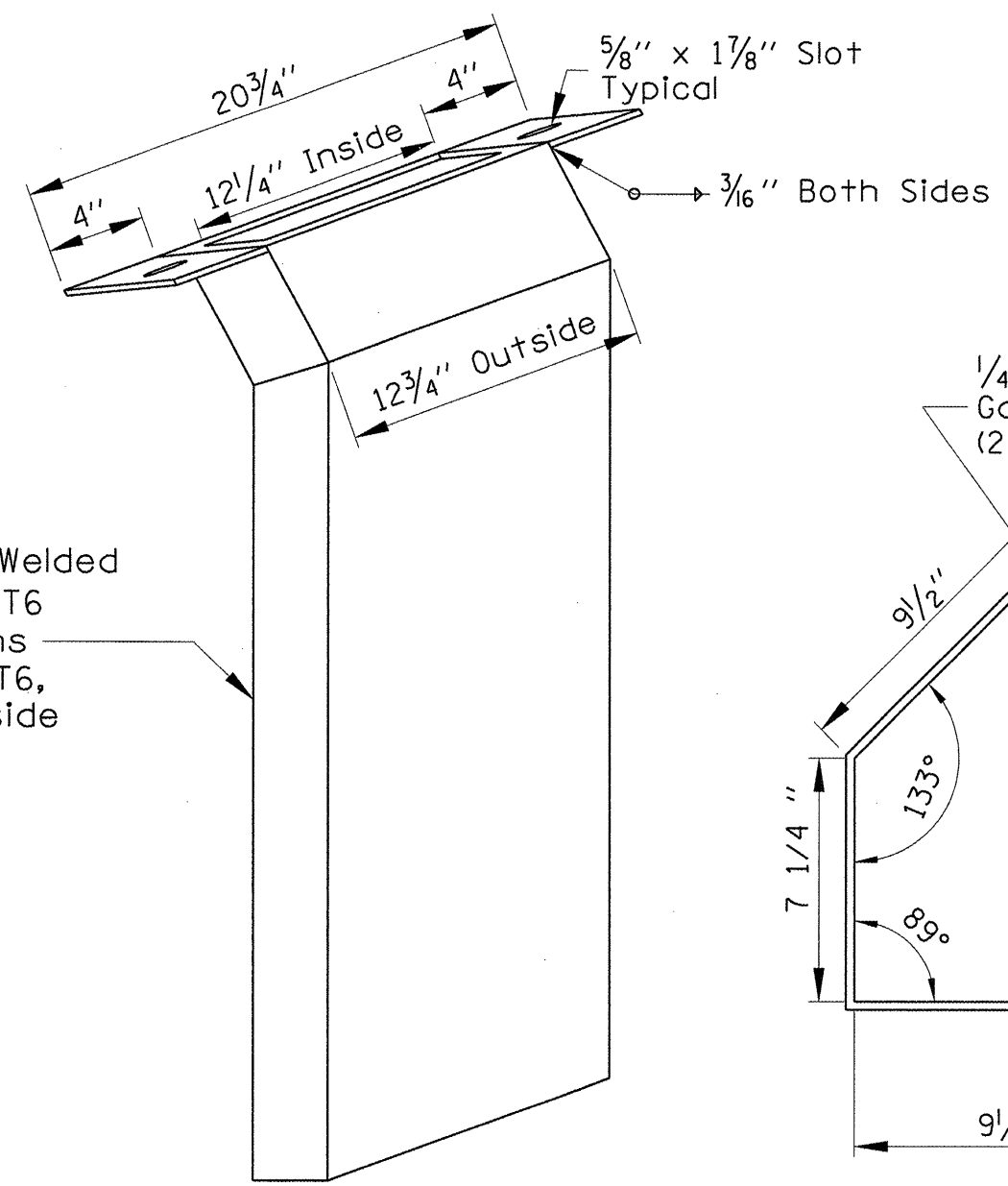
**BRACKET DETAIL**

**FLOOR DRAIN EXTENSION**  
044-0045  
044-0046

FILE NAME =	USER NAME = gautneyrk	DESIGNED -	REVISED -	<b>STATE OF ILLINOIS DEPARTMENT OF TRANSPORTATION</b>	SCALE: _____ SHEET NO. _____ OF _____ SHEETS STA. _____ TO STA. _____	F.A.I. RTE.	SECTION	COUNTY	TOTAL SHEETS	SHEET NO.
D:\Program Development\Studies and Plan	\Downstairs Design\ZBRIDGE MAINT\CONTRACT	DRAWN IN: 78109_DRAIN.dgn	REVISED -			24	09 CM DECK DRAIN EXT FY09-1	JOHNSON MASSAC	16	9
PLOT SCALE = 5.2953' / IN.	CHECKED -	REVISED -	CONTRACT NO. 78109							
PLOT DATE = 12/22/2008	DATE -	REVISED -	FED. ROAD DIST. NO. ILLINOIS FED. AID PROJECT							

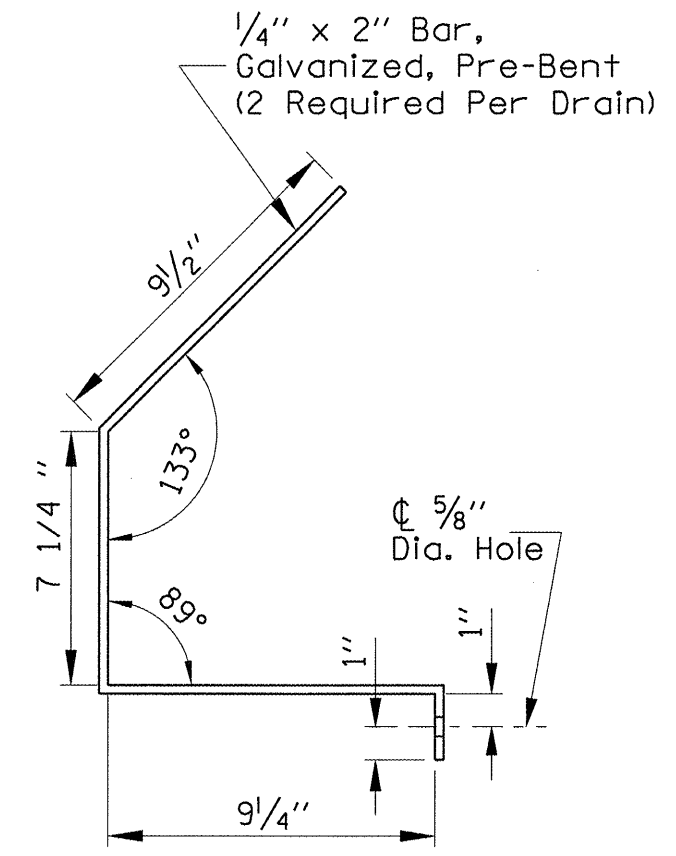


**SECTION AT DRAIN**



**FLOOR DRAIN  
EXTENSION DETAIL**

2 Locations Each Structure

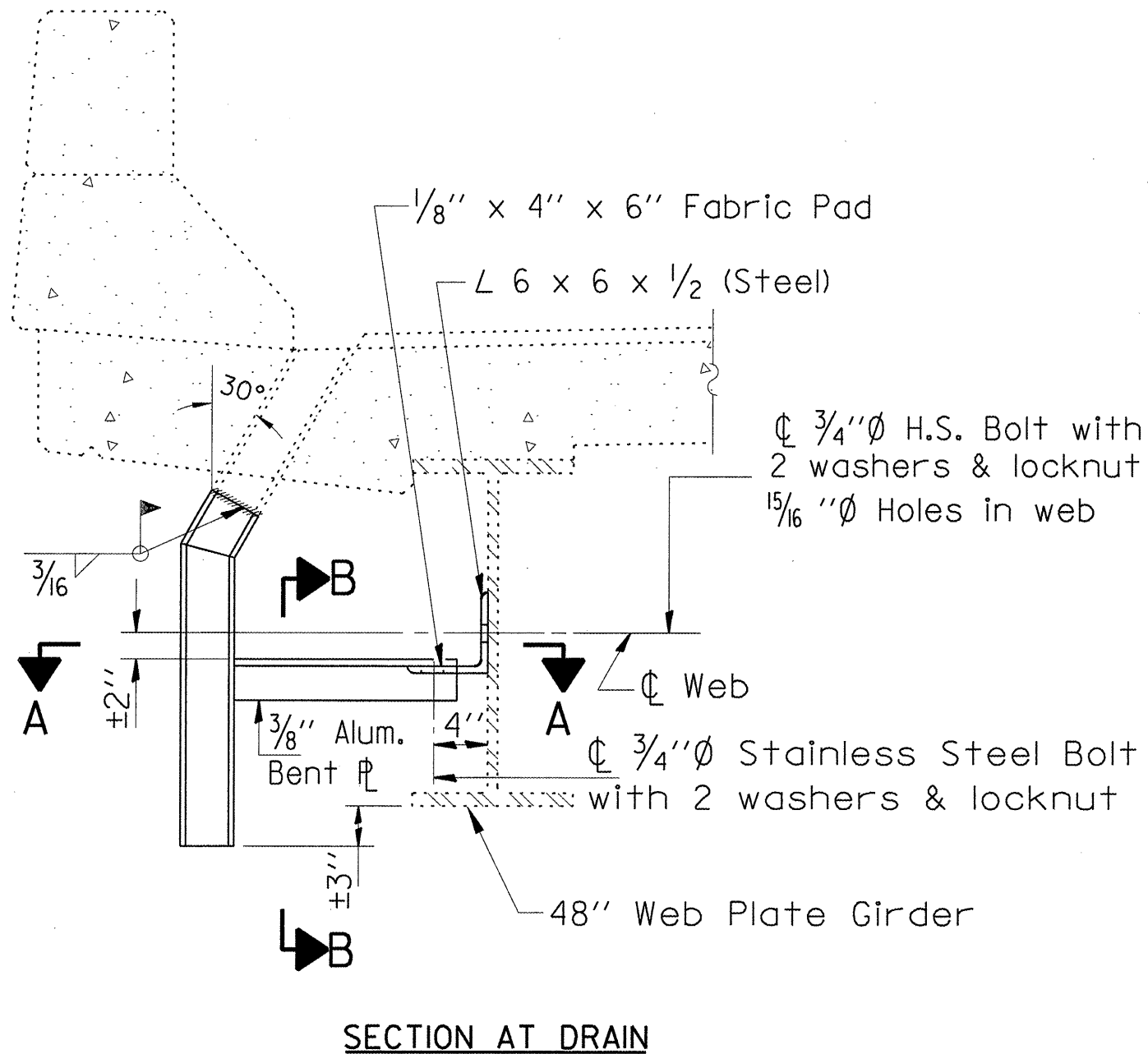


**BRACKET DETAIL**

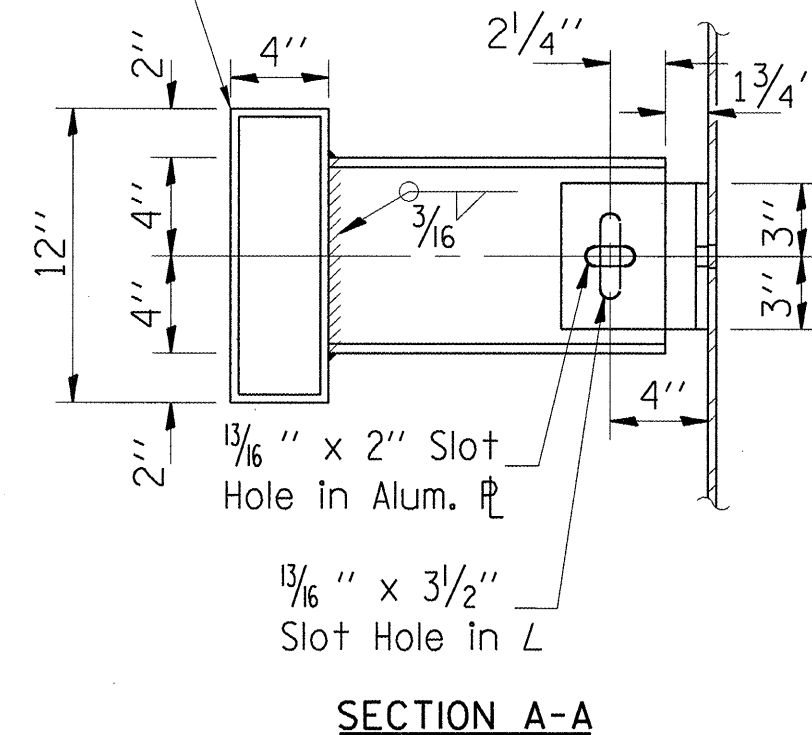
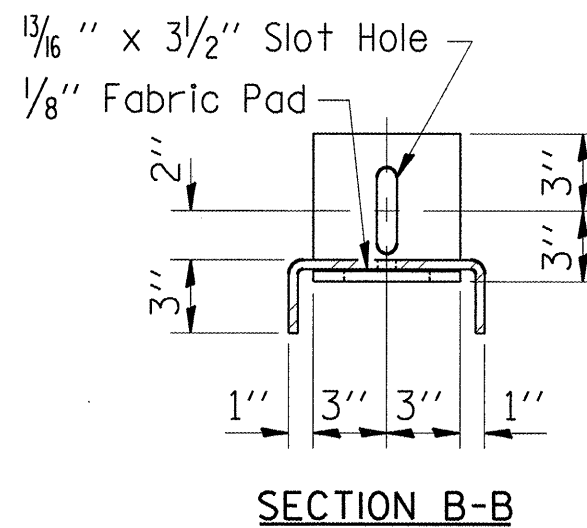
**FLOOR DRAIN EXTENSION**

044-0047  
044-0048

FILE NAME =	USER NAME = gautneyrk	DESIGNED -	REVISED -	<b>STATE OF ILLINOIS DEPARTMENT OF TRANSPORTATION</b>	F.A.I. RTE.	SECTION	COUNTY	TOTAL SHEETS	SHEET NO.
0:\Program Development\Studies and Plan	NDownstairs Design\ZBRIDGE MAINT\CONTRACT	DRAWINGS\78109_DRAINS.dgn	REVISED -		24	09 CM DECK DRAIN EXT FY09-1	JOHNSON MASSACH	16	10
PLOT SCALE = 5.2953' / IN.	CHECKED -	DATE -	REVISED -		<b>CONTRACT NO. 78109</b>				
PLOT DATE = 12/22/2008	DATE -	REVISED -	REVISED -		FED. ROAD DIST. NO. ILLINOIS FED. AID PROJECT				



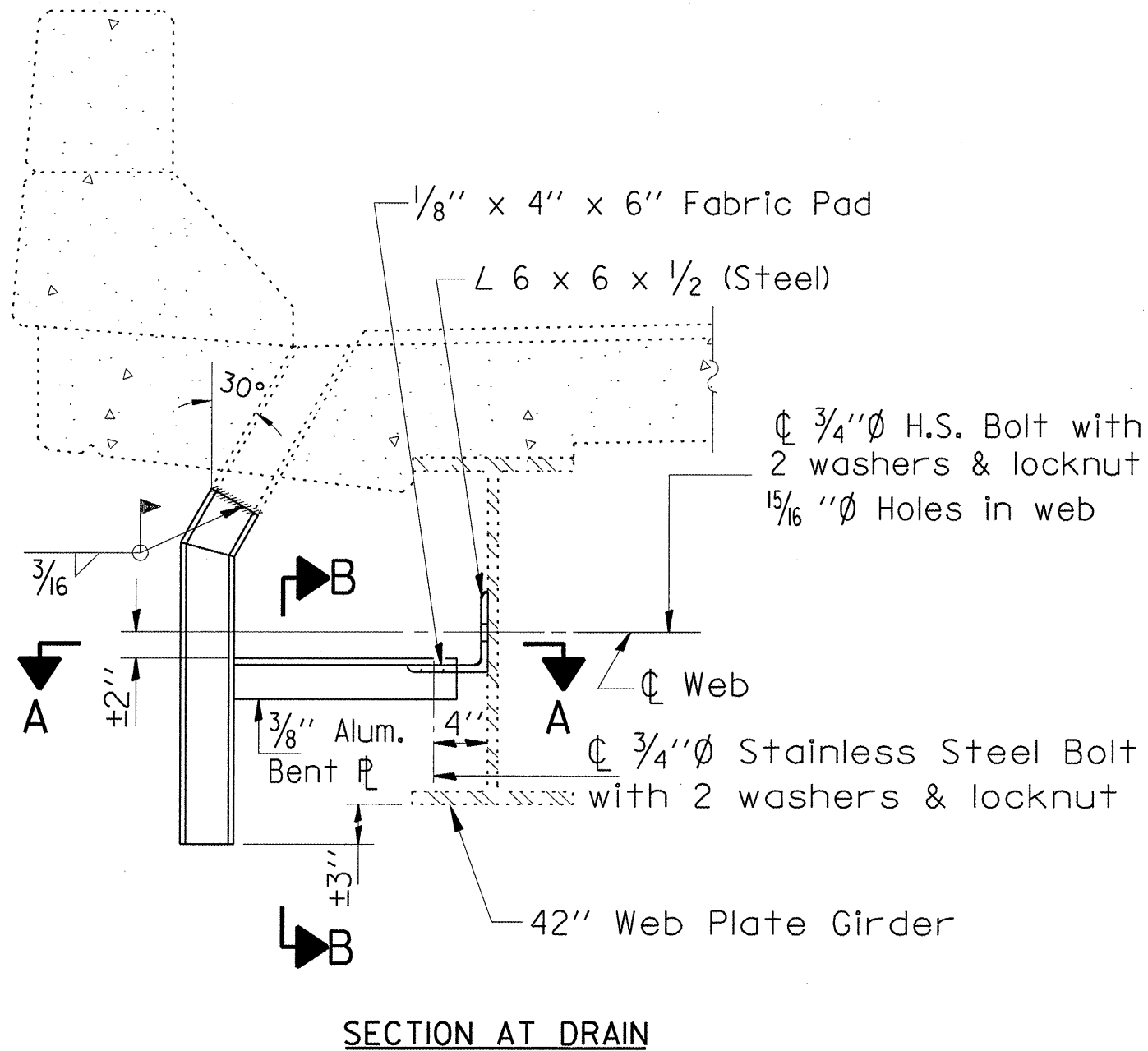
3/16" Aluminum Sheets Welded  
 ASTM: B209 alloy 6061-T6  
 or Aluminum Extrusions  
 ASTM: B221 alloy 6061-T6,



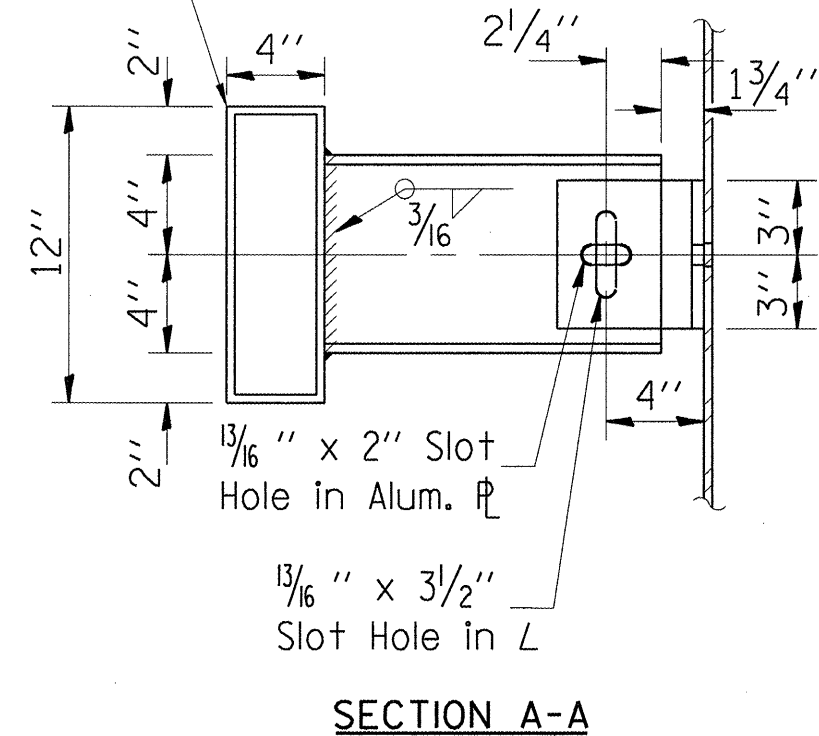
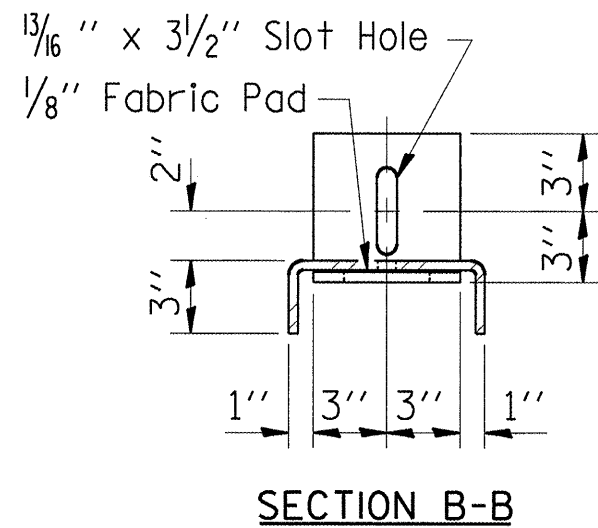
**FLOOR DRAIN EXTENSION DETAIL**  
 20 Locations

**FLOOR DRAIN EXTENSION**  
 064-0016

FILE NAME =	USER NAME = gautneyrk	DESIGNED -	REVISD -	<b>STATE OF ILLINOIS DEPARTMENT OF TRANSPORTATION</b>	SCALE: _____ SHEET NO. _____ OF _____ SHEETS STA. _____ TO STA. _____	F.A.L. RTE.	SECTION	COUNTY	TOTAL SHEETS	SHEET NO.
D:\Program Development\Studies and Plan	\Downstears Design\ZBRIDGE MAINT\CONTRACT	DRAWN IN: 78189_DRAINS.dgn	REVISD -			24	09 CM DECK DRAIN EXT FY09-1	JOHNSON	16	11
PLOT SCALE = 5.2953' / IN.	CHECKED -	REVISD -	CONTRACT NO. 78109							
PLOT DATE = 12/22/2008	DATE -	REVISD -	FED. ROAD DIST. NO. ILLINOIS FED. AID PROJECT							



3/16" Aluminum Sheets Welded  
 ASTM: B209 alloy 6061-T6  
 or Aluminum Extrusions  
 ASTM: B221 alloy 6061-T6,

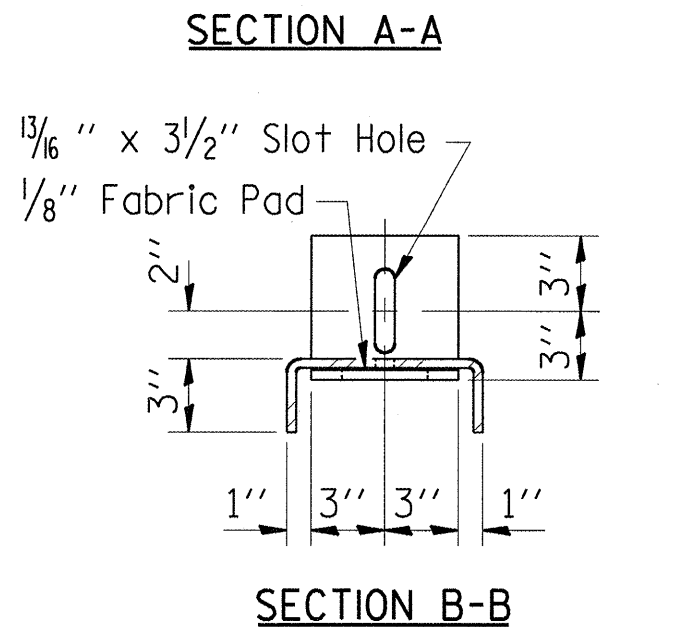
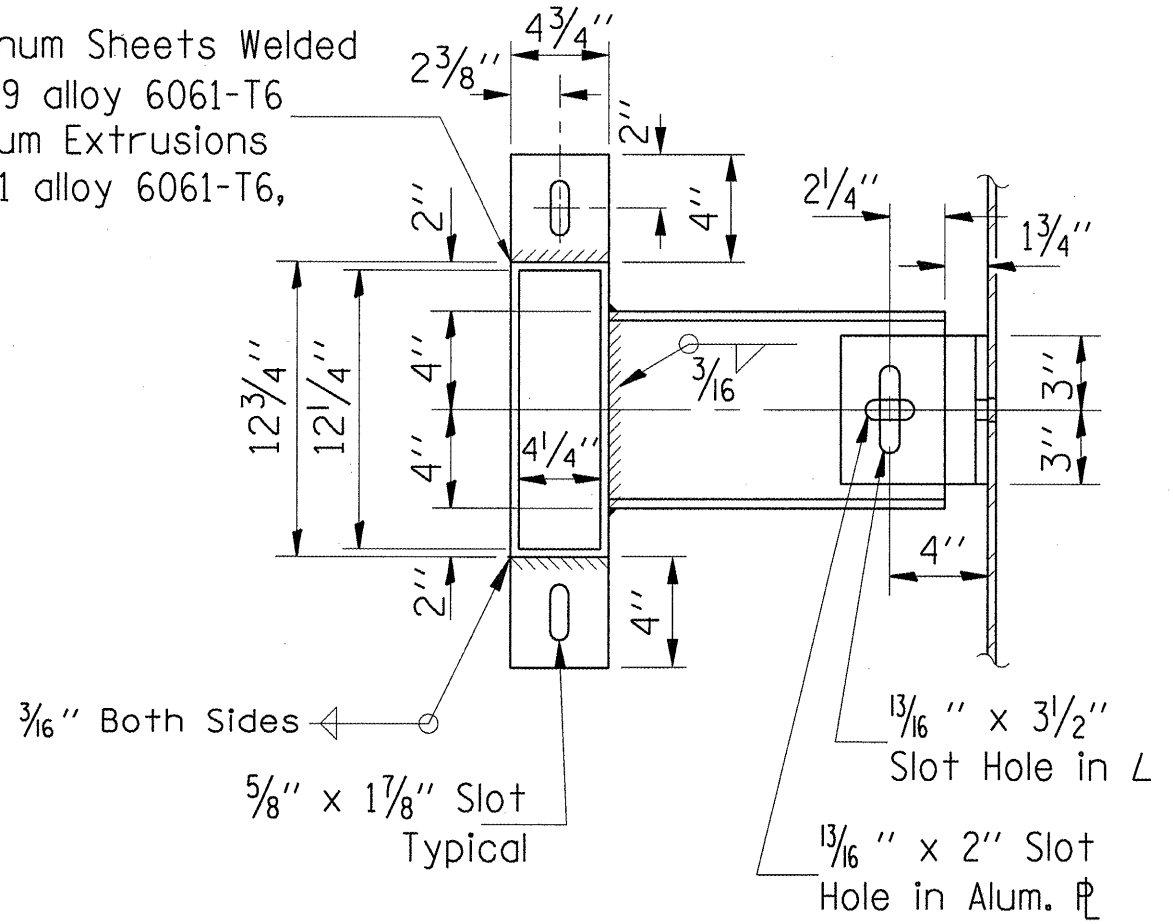
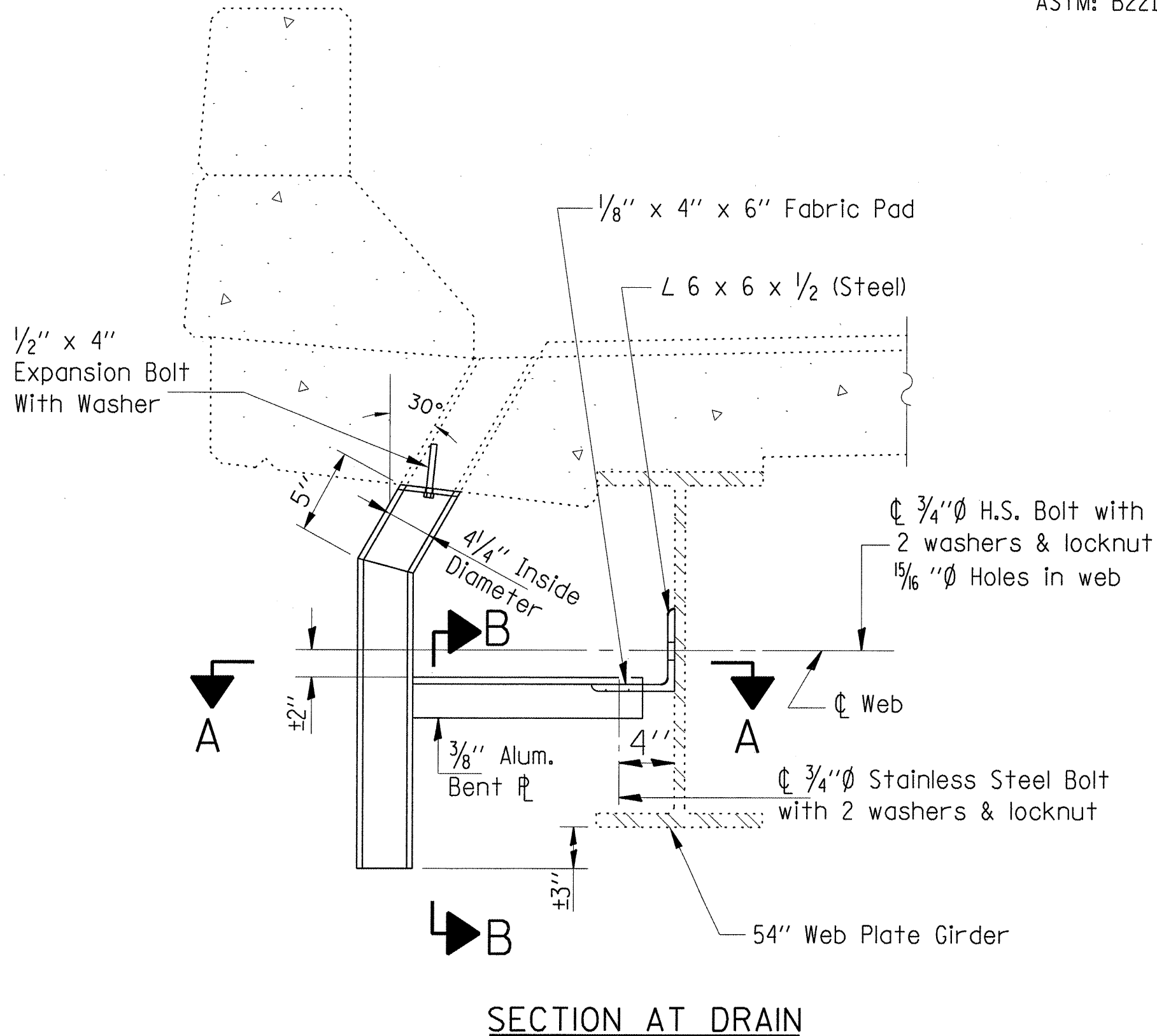


FLOOR DRAIN EXTENSION DETAIL  
 8 Locations

FLOOR DRAIN EXTENSION  
 064-0019

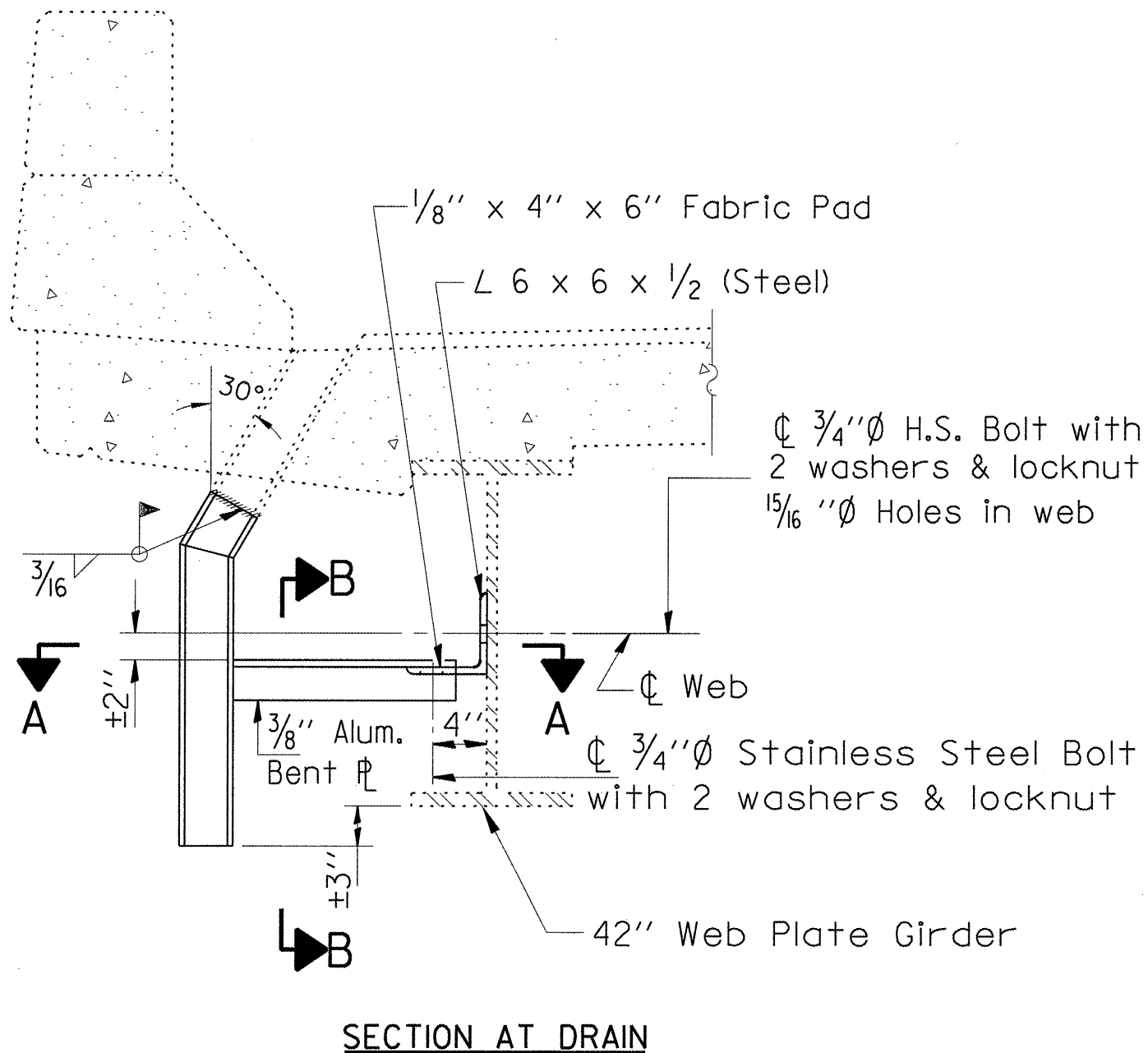
FILE NAME =	USER NAME = gautneyrk	DESIGNED -	REVISD -	<b>STATE OF ILLINOIS DEPARTMENT OF TRANSPORTATION</b>	SCALE: _____ SHEET NO. ____ OF ____ SHEETS STA. _____ TO STA. _____	F.A.I. RTE.	SECTION	COUNTY	TOTAL SHEETS	SHEET NO.	
D:\Program Development\Studies and Plans\Downstairs Design\BRIDGE MAINT\CONTRACT	DRWAIN\76189_DRAIN.dgn	CHECKED -	REVISD -			24	09 CM DECK DRAIN EXT FY09-1	JOHNSON MASSACH	16	12	
PLOT SCALE = 5.2953 / IN.	DATE -	REVISD -	REVISD -			<b>CONTRACT NO. 78109</b>					
PLOT DATE = 12/22/2008	DATE -	REVISD -	REVISD -			FED. ROAD DIST. NO. ILLINOIS FED. AID PROJECT					

3/16" Aluminum Sheets Welded  
 ASTM: B209 alloy 6061-T6  
 or Aluminum Extrusions  
 ASTM: B221 alloy 6061-T6,

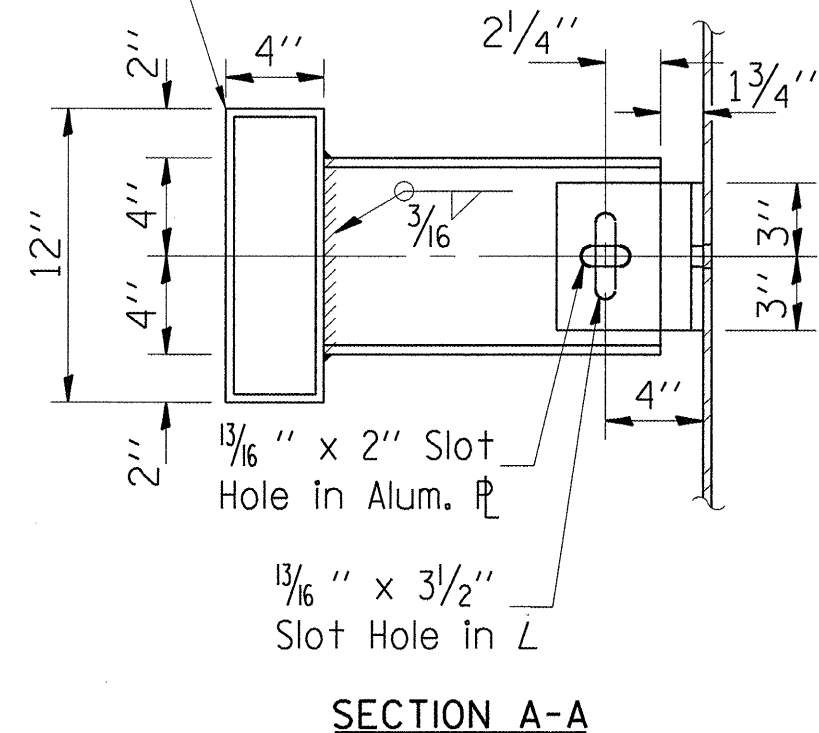
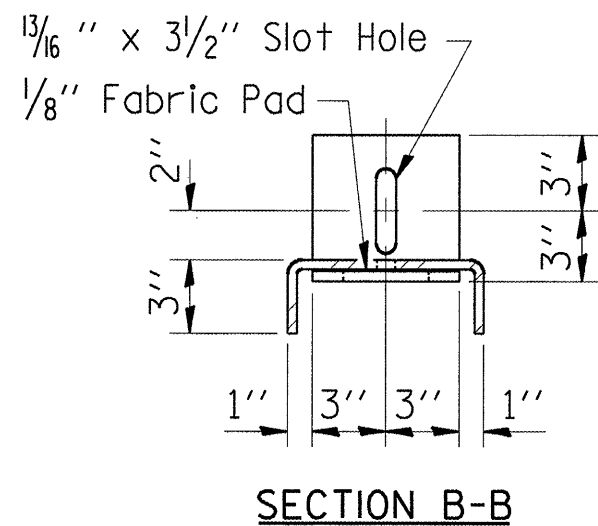


**FLOOR DRAIN EXTENSION DETAIL**  
 32 Locations  
**FLOOR DRAIN EXTENSION**  
 064-0022

FILE NAME =	USER NAME = gautneyrk	DESIGNED	REVISION	<b>STATE OF ILLINOIS</b> <b>DEPARTMENT OF TRANSPORTATION</b>	F.A.I. RTE.	SECTION	COUNTY	TOTAL SHEETS	SHEET NO.
0:\Program Development\Studies and Plan	\Downstairs Design\ZBRIDGE MAINT\CONTRACT	DRAWN	REVISED		24	09 CM DECK DRAIN EXT FY09-1	JOHNSON MASSAC	16	13
PLOT SCALE = 5.2953 / IN.		CHECKED	REVISED		CONTRACT NO. 78109				
PLOT DATE = 12/22/2008		DATE	REVISED		FED. ROAD DIST. NO. ILLINOIS FED. AID PROJECT				



3/16" Aluminum Sheets Welded  
 ASTM: B209 alloy 6061-T6  
 or Aluminum Extrusions  
 ASTM: B221 alloy 6061-T6,



**FLOOR DRAIN EXTENSION DETAIL**  
 8 Locations

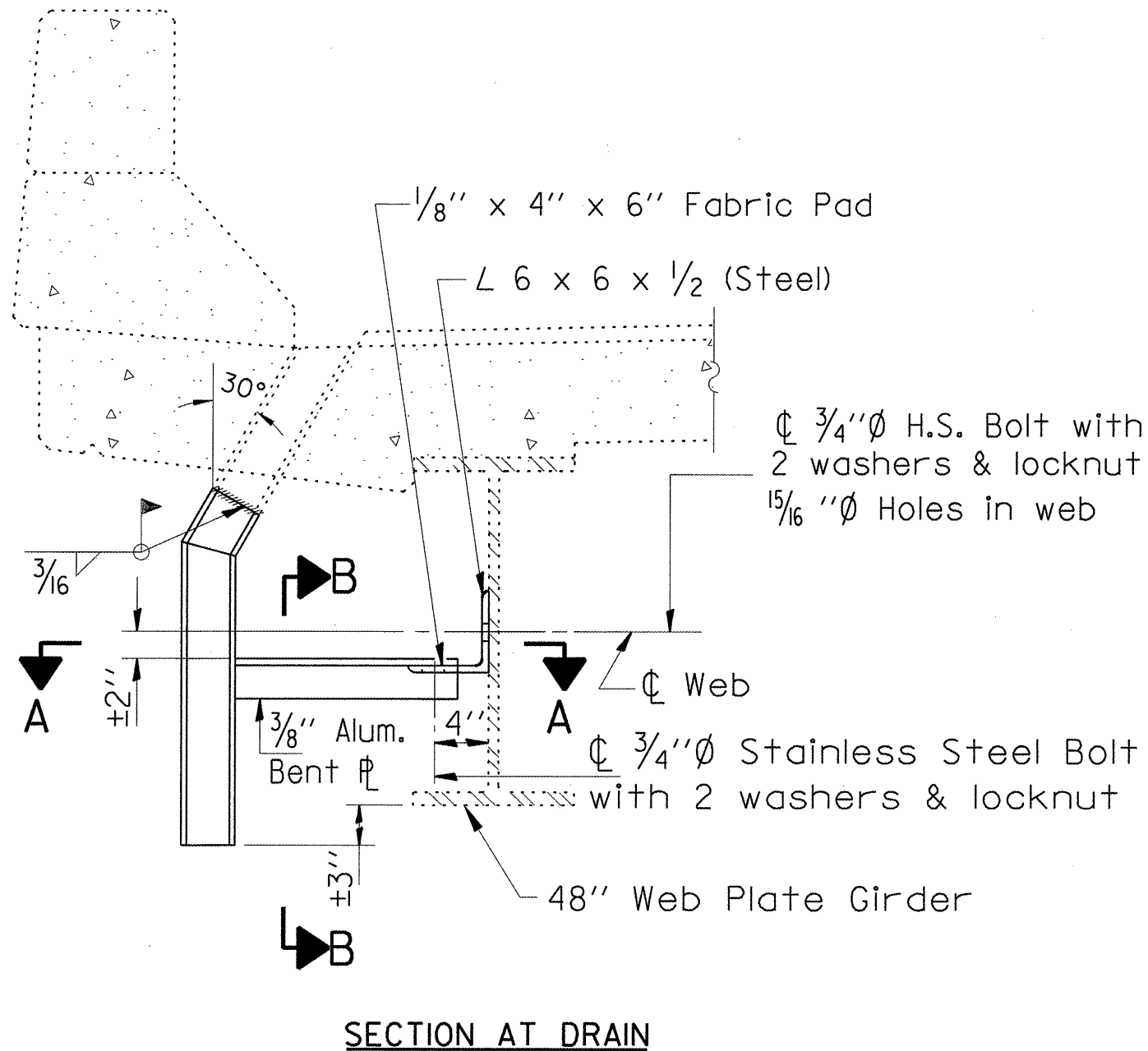
**FLOOR DRAIN EXTENSION**  
 064-0029

FILE NAME =	USER NAME = gautneyrk	DESIGNED -	REVISED -
D:\Program Development\Studies and Plan	NDownstairs Design\ZBRIDGE MAINT\CONTRACT	*DRAWINGS\78109_DRAINS.dgn	REVISED -
PLOT SCALE = 5.2953' / IN.	CHECKED -	REVISED -	REVISED -
PLOT DATE = 12/22/2008	DATE -	REVISED -	REVISED -

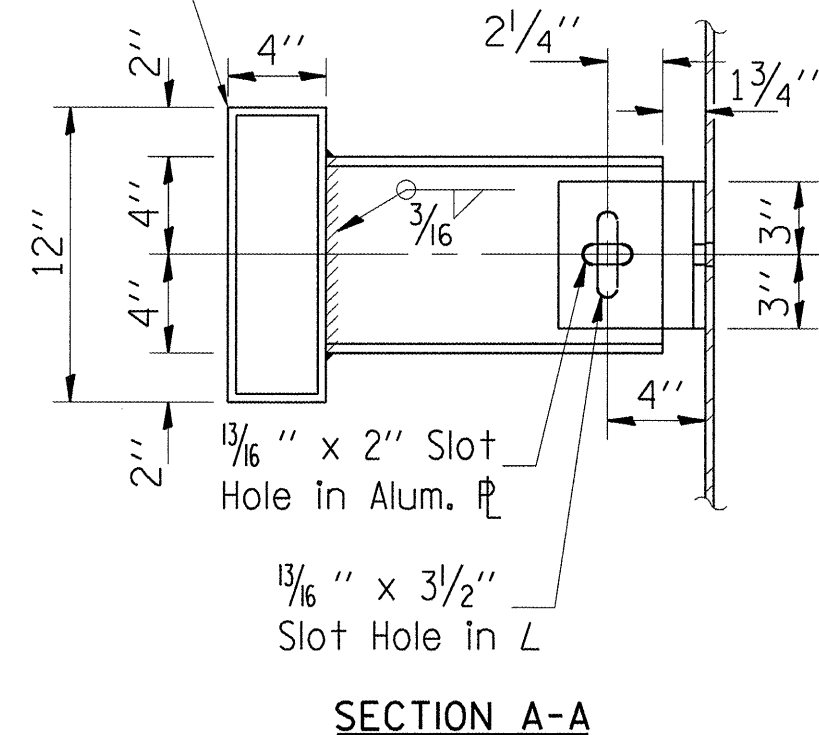
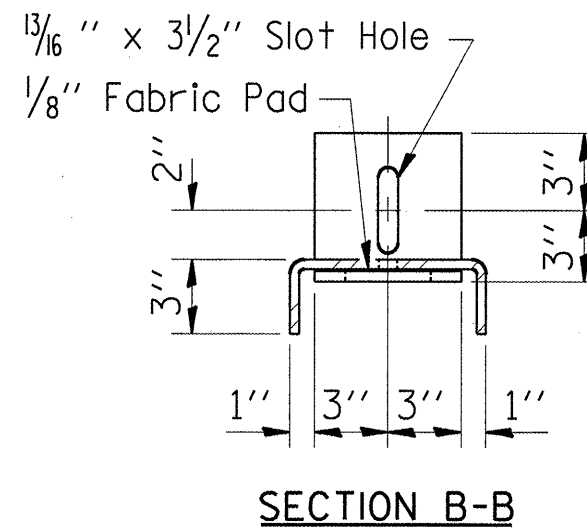
STATE OF ILLINOIS  
 DEPARTMENT OF TRANSPORTATION

SCALE:	SHEET NO. OF SHEETS	STA. TO STA.
--------	---------------------	--------------

F.A.I. RTE.	SECTION	COUNTY	TOTAL SHEETS	SHEET NO.
24	09 CM DECK DRAIN EXT FY09-1	JOHNSON MASSAC	16	14
CONTRACT NO. 78109				
FED. ROAD DIST. NO. ILLINOIS FED. AID PROJECT				



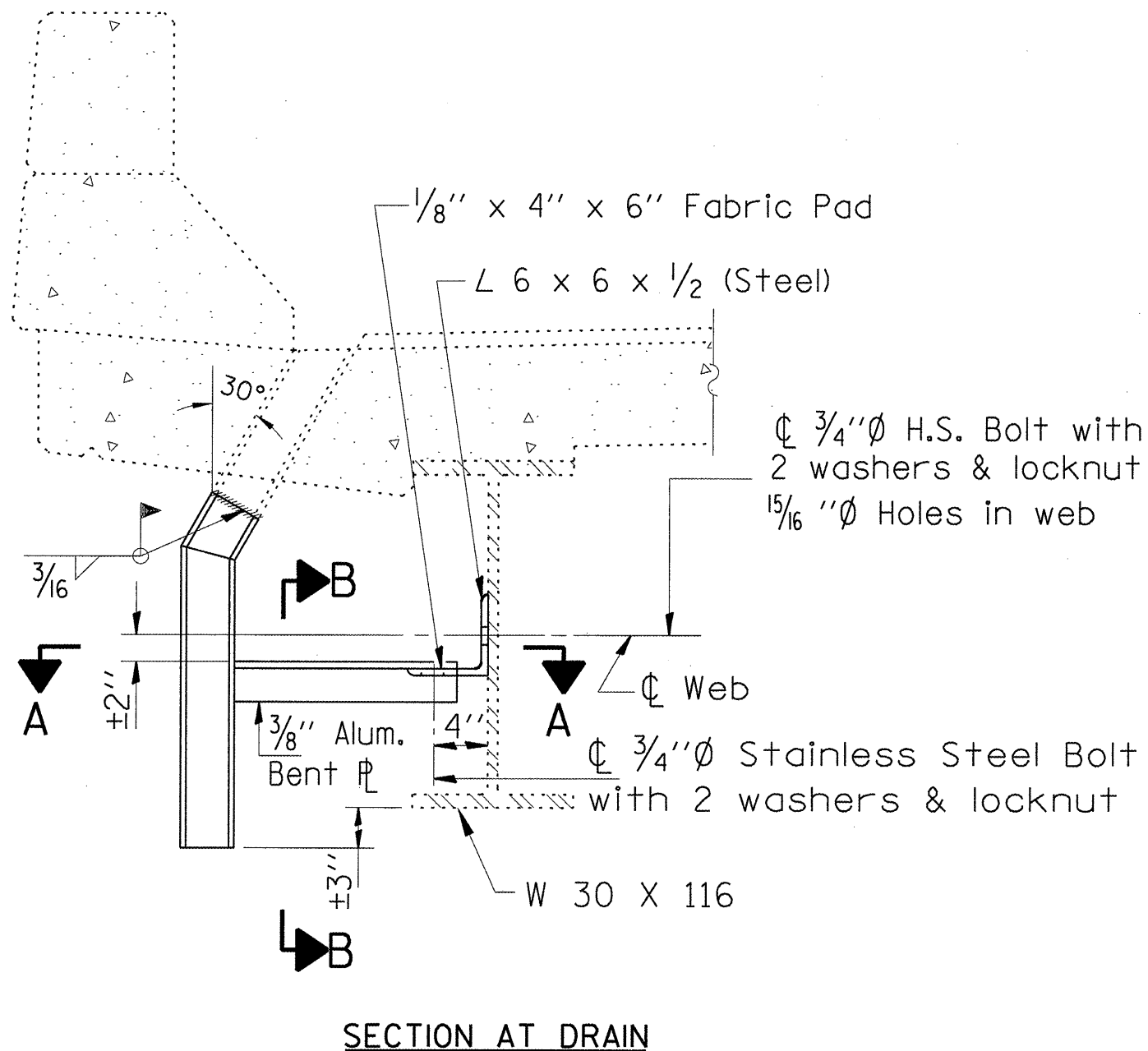
3/16" Aluminum Sheets Welded  
 ASTM: B209 alloy 6061-T6  
 or Aluminum Extrusions  
 ASTM: B221 alloy 6061-T6,



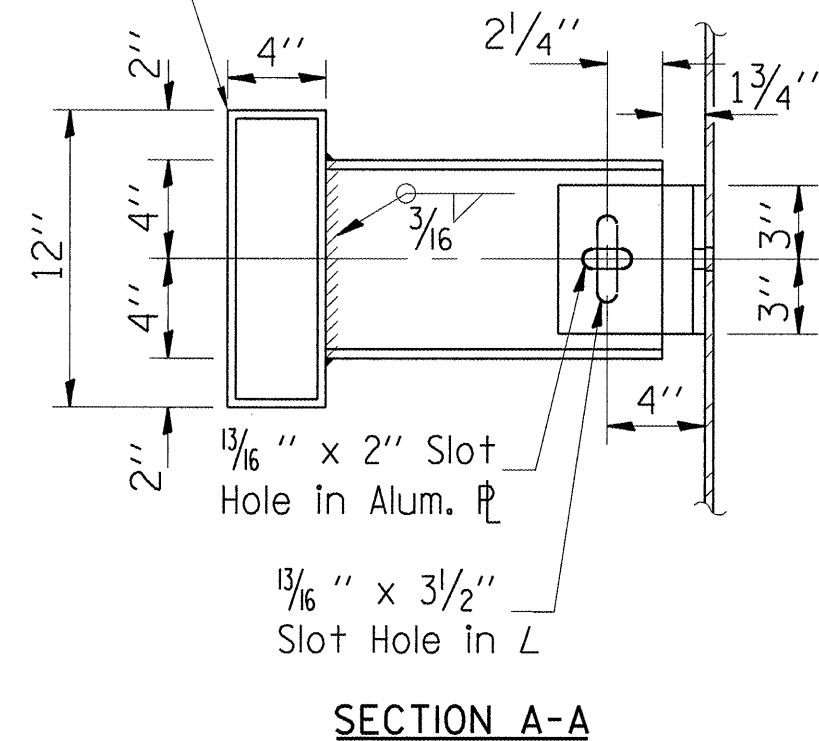
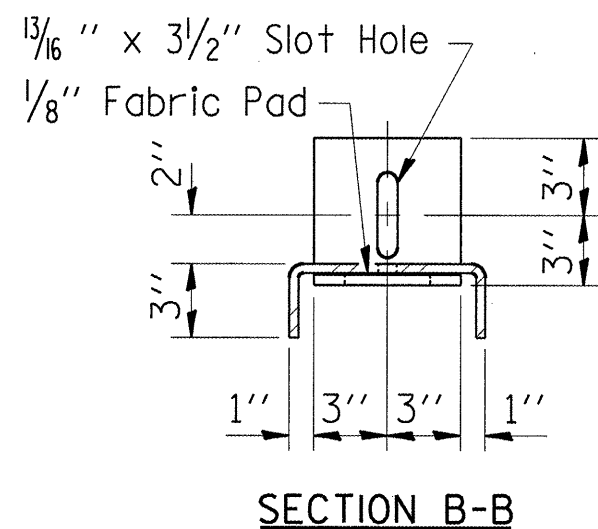
**FLOOR DRAIN EXTENSION DETAIL**  
 13 Locations

**FLOOR DRAIN EXTENSION**  
 064-0037

FILE NAME =	USER NAME = gautneyrk	DESIGNED -	REVISED -	<b>STATE OF ILLINOIS DEPARTMENT OF TRANSPORTATION</b>	SCALE: _____	F.A.I. RTE.	SECTION	COUNTY	TOTAL SHEETS	SHEET NO.	
D:\Program Development\Studies and Plans\Downstairs Design\ZBRIDGE MAINT.CONTRACT	DRAWN: INS\76189_DRAINS.dgn	CHECKED -	REVISED -			24	D9 CM DECK DRAIN EXT FY09-1	JOHNSON MASSAC.	16	15	
PLOT SCALE = 5.2953' / IN.	DATE -	REVISED -	REVISED -			<b>CONTRACT NO. 78109</b>					
PLOT DATE = 12/22/2008	DATE -	REVISED -	REVISED -			FED. ROAD DIST. NO. ILLINOIS FED. AID PROJECT					



3/16" Aluminum Sheets Welded  
 ASTM: B209 alloy 6061-T6  
 or Aluminum Extrusions  
 ASTM: B221 alloy 6061-T6,



FLOOR DRAIN EXTENSION DETAIL  
 10 Locations

FLOOR DRAIN EXTENSION  
 064-0038

FILE NAME =	USER NAME = gautneyrk	DESIGNED -	REVISED -	<b>STATE OF ILLINOIS DEPARTMENT OF TRANSPORTATION</b>	SCALE: _____ SHEET NO. ____ OF ____ SHEETS STA. _____ TO STA. _____	F.A.I. RTE.	SECTION	COUNTY	TOTAL SHEETS	SHEET NO.	
D:\Program Development\Studies and Plan	\Downstairs Design\ZBRIDGE MAINT\CONTRACT	DRAWN	REVISED			24	09 CM DECK DRAIN EXT FY09-1	JOHNSON MASSAC	16	16	
PLOT SCALE = 5.2953' / IN.		CHECKED	REVISED			CONTRACT NO. 78109					
PLOT DATE = 12/22/2009		DATE	REVISED			FED. ROAD DIST. NO. ILLINOIS FED. AID PROJECT					