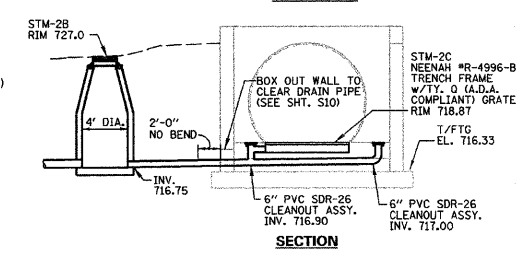
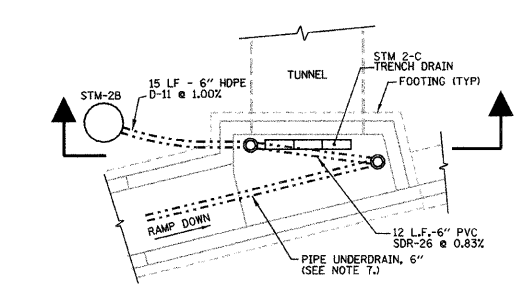


SUMP PUMP LAYOUT
SCALE: 1/8" = 1'-0"



SOUTH RAMP TRENCH DRAIN (STM-2C)
SCALE: 1/8" = 1'-0"

NOTES:

- THIS PLAN DOES NOT SHOW ITEMS PREVIOUSLY REMOVED PER THE SITE PREPARATION PLAN (SHT. C3)
 - THE PLANS SHOW THE LOCATION OF CERTAIN UNDERGROUND AND OVERHEAD UTILITY LINES, WATER MAINS, GAS MAINS, COMMUNICATIONS LINES, SEWERS, ETC. EVERY POSSIBLE MEANS HAS BEEN EMPLOYED TO RESEARCH AND FIELD LOCATE THESE FACILITIES INCLUDING ON-SITE EXPLORATION, J.U.L.I.E. LOCATORS, VILLAGE OF WINFIELD RECORDS, NICOR, AT&T AND COMMONWEALTH EDISON. THE LOCATION OF THE FIBER OPTIC CABLE WAS VERIFIED AT FIELD MEETINGS WITH SPRINT CABLE REPRESENTATIVES. THE CONTRACTOR SHALL BE RESPONSIBLE FOR PROPER PROTECTION FROM DAMAGE TO THESE AND ANY UNFORESEEN FACILITIES DURING ALL PHASES OF CONSTRUCTION.
 - SEE ELECTRICAL PLANS BY POWRTE ENGINEERING FOR UNDERGROUND ELECTRICAL FEED REMOVAL AND RELOCATION, SITE LIGHTING, TUNNEL LIGHTING AND TUNNEL ELECTRICAL CONNECTIONS FOR MECHANICAL EQUIPMENT.
 - ALL PROPOSED STRUCTURES IN PAVED AREAS TO HAVE 6-INCH ADJUSTING RING.
 - A 20 FT. WIDE PERPETUAL LICENSE SHALL BE GRANTED TO THE VILLAGE OF WINFIELD FOR PLACEMENT AND MAINTENANCE OF THE TUNNEL CASING, ELECTRICAL EQUIPMENT AND LIGHTING (SEE SHT. C-4)
 - ALL UNDERGROUND UTILITIES WITHIN 6 FT. EACH SIDE OF THE CENTERLINE OF THE PROPOSED TUNNEL SHALL BE UNCOVERED, SUPPORTED AND PROTECTED DURING THE COURSE OF TUNNELING OPERATION.
 - PIPE UNDERDRAIN SHALL BE PERFORATED CORRUGATED POLYETHYLENE TUBING WITH FILTER SOCK PER I.D.O.T. 1040.04 (SEE STRUCTURAL SHEETS)
- APPROXIMATE LOCATION OF RELOCATED SITE LIGHTING POLE AND FIXTURE (SEE ELECTRICAL DRAWINGS)

This drawing shall not be used nor reproduced either wholly or in part except when authorized by the engineer- Rempe-Sharpe

ACTION	NAME	No.	Date	Revisions	By
Design	J.B.				
Drawn	D.B.E.				
Checked	E.J.				

REMPE-SHARPE CONSULTING ENGINEERS
ILL. P.D.F. LICENSE NO. 184-000895
324 WEST STATE STREET - GENEVA, ILLINOIS 60134
Telephone (630) 232-0827 - Fax (630) 232-1629

PROJECT
PEDESTRIAN UNDERPASS AT METRA STATION WINFIELD, ILLINOIS

SHEET TITLE
OVERALL UTILITY PLAN

SCALE	PROJECT NO.	SHEET
1"=20'	WF-451	No. C8
	DATE	Of C11
	DEC. 19, 2008	

12/18/2008 8:08:52 AM N:\DRAWING\WF451\SHEETS\WF451-C8-UTIL.DWG