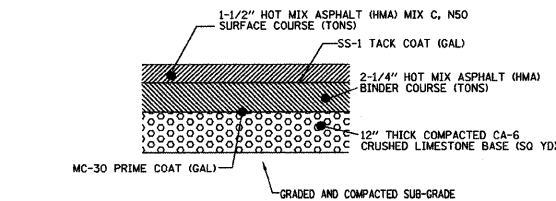


STANDARD B-6.12 CURB AND GUTTER  
REVERSE PITCH B-6.12 CURB AND GUTTER

- NOTES:**
- CONCRETE MATERIAL, CURING AND PROTECTION FOR ALL CURB SHALL MEET THE REQUIREMENTS ARTICLE 1020, 1021, 1022 AND 1023 OF THE STATE OF ILLINOIS "STANDARD SPECIFICATIONS FOR ROAD AND BRIDGE CONSTRUCTION" (SSRBC), LATEST EDITION. MEMBRANE CURING AND CONCRETE SEALING SHALL BE ACCOMPLISHED WITH W.R. MEADOWS VOCOMP-20 CURB AND SEAL OR APPROVED EQUAL. IF THE FORECAST INDICATES TEMPERATURES BELOW 45°, PROTECTION METHODS SHALL BE INSTALLED IN ACCORDANCE WITH SSRBC AND SHALL BE APPROVED BY THE CITY.
  - CONTRACTION JOINTS, TO BE PROVIDED AT 10 FT. (MIN.) ON CENTERS AND SHALL BE SAW CUT TO A MINIMUM DEPTH OF 2 INCHES FROM FRONT TO BACK WITHIN 24 HOURS OF CONCRETE PLACEMENT.
  - EXPANSION JOINTS SHALL BE FORMED WITH A 3/4" THICK PREFORMED EXPANSION JOINT FILLER CONFORMING TO THE EXACT CROSS SECTION OF THE CONCRETE CURB AND GUTTER SHALL BE PLACED AT 100 FOOT (MIN.) INTERVALS, AT P.C.'S AND P.T.'S AND AT THE END OF EACH POUR. TWO NO. 6 SMOOTH DOWEL RODS, 18 INCHES IN LENGTH, AND PROPERLY GREASED, SHALL BE INSTALLED AT EACH OF THESE EXPANSION JOINTS. CUTS INTO THE EXISTING CURB SHALL BE FULL DEPTH WITH FULL EXPANSION JOINTS PER DETAILS.
  - IF THE PAVEMENT SLOPES AWAY FROM THE CURB, THEN THE SLOPE OF THE GUTTER FLAG SHALL MATCH THE PAVEMENT SLOPE. (REVERSE PITCH)
  - CURB TO BE DEPRESSED AT A.D.A. SIDEWALK RAMPS; THE 1 1/2" RISE SHALL BE REDUCED TO 1/2" WHEN CURB IS PLACED ADJACENT TO CURB RAMP ACCESSIBLE TO THE DISABLED.
  - ALL CURBS SHALL HAVE A LIGHT TRANSVERSE BROOM FINISH.



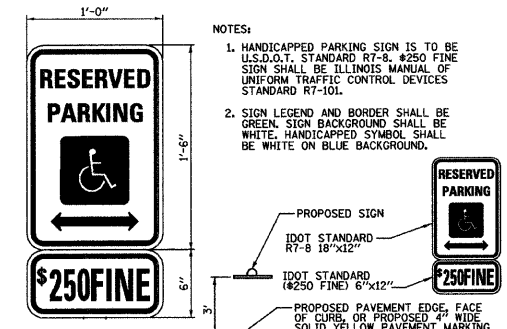
TYPICAL PAVEMENT SECTION  
NOT TO SCALE

**HOT MIX ASPHALT MIXTURE REQUIREMENT**

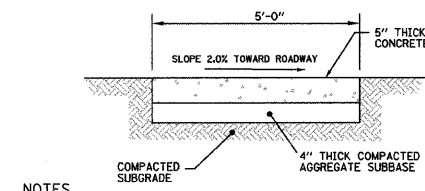
MIXTURE TYPE	AC TYPE	VOIDS
DRIVEWAYS, AISLES & PARKING AREAS		
HMA SURFACE COURSE, MIX C, NSO (11.9 mm) 1-1/2"	PG 64-22	4% @ 50 GYR
HMA BASE COURSE, (HMA BINDER 1L-19 mm) 2-1/4"	PG 64-22*	4% @ 50 GYR

THE UNIT WEIGHT USED TO CALCULATE ALL HMA SURFACE MIXTURE QUANTITIES IS 112 LBS/50-YD<sup>3</sup>  
\* WHEN RAP EXCEEDS 20%, THE ASPHALT BINDER IN THE MIX SHALL BE PG 58-22

PARKING AREA CURB & GUTTER DETAILS  
NOT TO SCALE

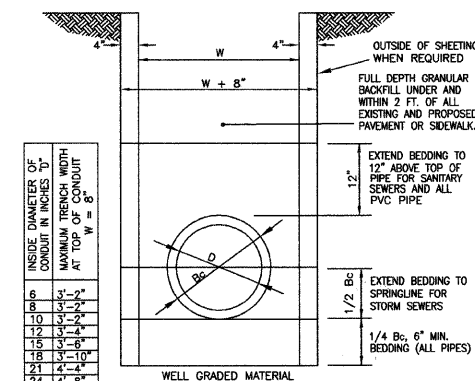


- NOTES:**
- HANDICAPPED PARKING SIGN IS TO BE U.S.D.O.T. STANDARD R7-8. #250 FINE SIGN SHALL BE ILLINOIS MANUAL OF UNIFORM TRAFFIC CONTROL DEVICES STANDARD R7-101.
  - SIGN LEGEND AND BORDER SHALL BE GREEN. SIGN BACKGROUND SHALL BE WHITE. HANDICAPPED SYMBOL SHALL BE WHITE ON BLUE BACKGROUND.

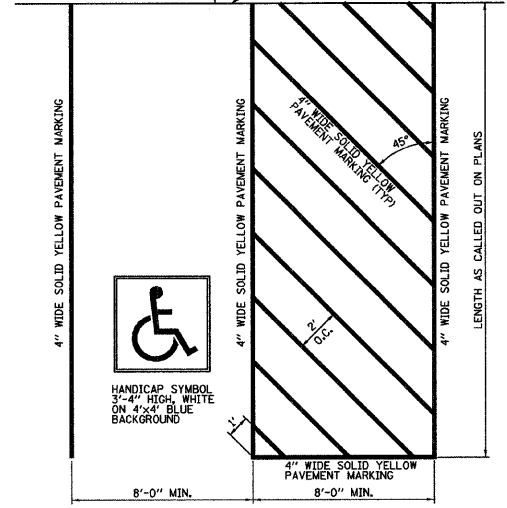


TYPICAL SIDEWALK  
NOT TO SCALE

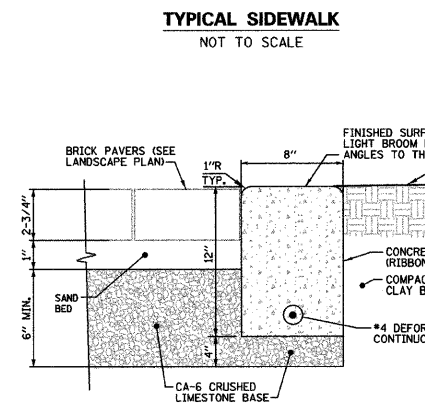
- NOTES:**
- CONCRETE SHALL BE CLASS "SI". MEMBRANE CURING SHALL BE APPLIED AS SPECIFIED IN SECTION 722 OF THE STATE OF ILLINOIS "STANDARD SPECIFICATIONS FOR ROAD AND BRIDGE CONSTRUCTION", LATEST EDITION. W.R. MEADOWS VOCOMP-20 CURB & SEAL, OR APPROVED EQUAL, SHALL BE USED PER MANUFACTURER'S SPECIFICATIONS.
  - FINISHED SURFACE TO RECEIVE A LIGHT BROOM FINISH AT RIGHT ANGLES TO THE EDGES OF THE SIDEWALK.
  - EXPANSION JOINTS OF 3/4" FULL DEPTH BITUMINOUS FIBER MATERIAL ARE REQUIRED WHERE PROPOSED SIDEWALK ABUTS CURBS, BUILDINGS, POLES, ETC. AND EXPANSION JOINTS SHALL BE PROVIDED 30'-0" ON CENTER.
  - TRAVERSE CONTRACTION JOINTS SHALL BE PROVIDED AT FIVE FOOT (5') INTERVALS ACROSS THE FULL WIDTH OF THE SIDEWALK.
  - SIDEWALK RAMPS SHALL BE CONSTRUCTED PER I.D.O.T. STANDARD DETAIL 424001-02. RAMP TEXTURE SHALL BE APPLIED A MINIMUM OF EIGHTEEN INCHES (18") UP FROM THE BACK OF CURB WHERE SHOWN ON THE PLANS.



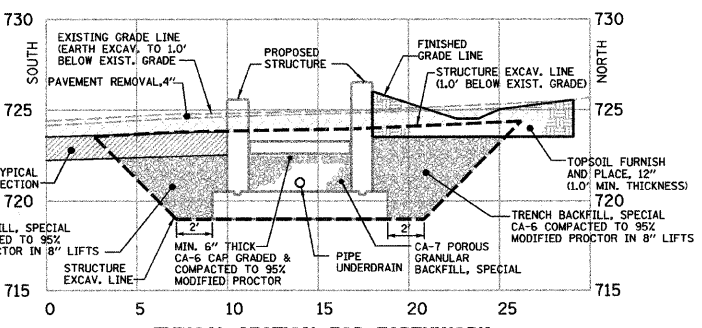
TYPICAL SEWER TRENCH SECTION  
NOT TO SCALE



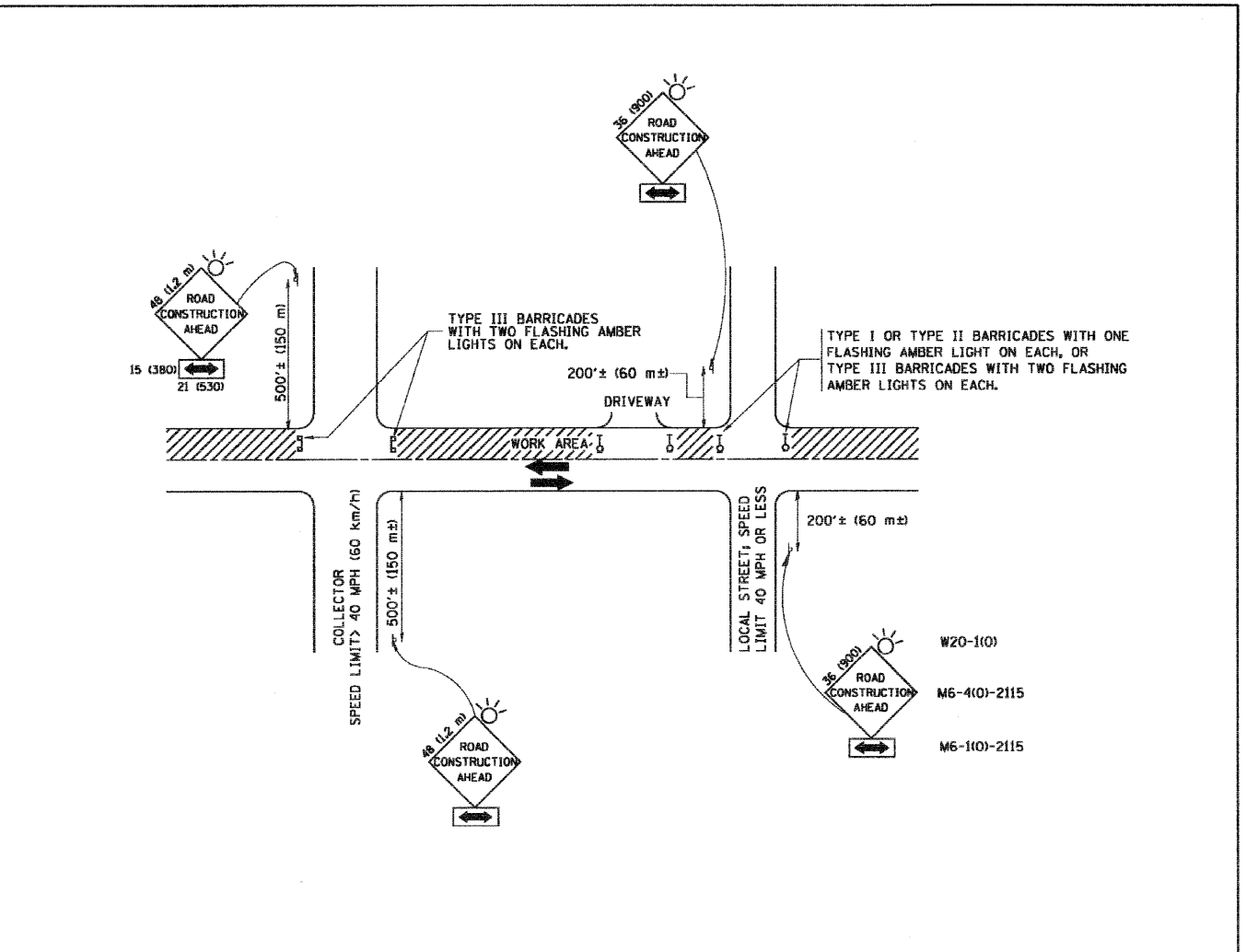
ACCESSIBLE PARKING STALL  
NOT TO SCALE



TYPICAL SECTION THROUGH RIBBON CURB AND BRICK PAVERS  
NOT TO SCALE



TYPICAL SECTION FOR EARTHWORK AND BACKFILL  
SOUTH RAMP (REF. SECT 2)  
SCALE: 1" = 5' V&H



TRAFFIC CONTROL AND PROTECTION FOR SIDE ROADS, INTERSECTIONS, AND DRIVEWAYS

- NOTES:**
- FOR NO LANE RESTRICTION ON THE SIDE ROAD OR DRIVEWAYS:
    - SIDE ROAD WITH A SPEED LIMIT OF 40 MPH (60 km/h) OR LESS AS SHOWN ON THE DRAWING AND AS DIRECTED BY THE ENGINEER:
      - ONE ROAD CONSTRUCTION AHEAD SIGN 36 x 36 (900x900) WITH A FLASHER AND FLAG MOUNTED ON IT APPROXIMATELY 200' (60 m) IN ADVANCE OF THE MAIN ROUTE.
      - THE CLOSED PORTION OF THE MAIN ROUTE SHALL BE PROTECTED BY BLOCKING WITH TYPE I, TYPE II OR TYPE III BARRICADES, 1/3 OF THE CROSS SECTION OF THE CLOSED PORTION.
    - SIDE ROAD WITH A SPEED LIMIT GREATER THAN 40 MPH (60 km/h) AS SHOWN ON THE DRAWING AND AS DIRECTED BY THE ENGINEER:
      - ONE ROAD CONSTRUCTION AHEAD SIGN 48 x 48 (1.2 m x 1.2 m) WITH A FLASHER MOUNTED ON IT APPROXIMATELY 500' (150 m) IN ADVANCE OF THE MAIN ROUTE.
      - THE CLOSED PORTION OF THE MAIN ROUTE SHALL BE PROTECTED BY BLOCKING WITH TYPE III BARRICADES, 1/2 OF THE CROSS SECTION OF THE CLOSED PORTION.
  - FOR A LANE CLOSURE ON A SIDE ROAD OR DRIVEWAY:
    - USE APPLICABLE PORTIONS OF THE TYPICAL APPLICATION OF TRAFFIC CONTROL DEVICES (STD. 701501, STD. 701606 OR THE APPROPRIATE STANDARD). THE SPACING OF SIGNS AND BARRICADES SHALL BE ADJUSTED FOR FIELD CONDITIONS AS DIRECTED BY THE ENGINEER. THE DIRECTIONAL ARROW SHALL BE COVERED OR REMOVED WHEN NO LONGER CONSISTENT WITH THE SIDE ROAD LANE CLOSURE.
    - ADVANCE WARNING SIGNS ARE TO BE OMITTED ON DRIVEWAY UNLESS OTHERWISE NOTED.
    - THE TRAFFIC CONTROL AND PROTECTION FOR SIDE ROADS, INTERSECTIONS, AND DRIVEWAYS SHALL BE INCIDENTAL TO THE COST OF SPECIFIED TRAFFIC CONTROL STANDARDS OR ITEMS.
- All dimensions are in millimeters (inches) unless otherwise shown.

REVISIONS	
NAME	DATE
L.H.A.	6/89
T. RAMMACHER	09/08/94
J. OBERLE	10/18/95
A. HOUSEH	03/06/96
A. HOUSEH	10/15/96
T. RAMMACHER	01/06/00

ILLINOIS DEPARTMENT OF TRANSPORTATION  
TRAFFIC CONTROL AND PROTECTION FOR SIDE ROADS, INTERSECTIONS, AND DRIVEWAYS

SCALE: NONE DRAWN BY: \_\_\_\_\_ CHECKED BY: \_\_\_\_\_

This drawing shall not be used nor reproduced either wholly or in part except when authorized by the engineer - Rempe-Sharpe

ACTION	NAME	No.	Date	Revisions	By
Design	J.B.				
Drawn	D.B.E.				
Checked	E.J.				

**REMPE-SHARPE**  
CONSULTING ENGINEERS  
IL P.D.F. LICENSE NO. 184-000895  
324 WEST STATE STREET - GENEVA, ILLINOIS 60134  
Telephone (830) 232-0827 - Fax (830) 232-1629

PROJECT: PEDESTRIAN UNDERPASS AT METRA STATION WINFIELD, ILLINOIS

SHEET TITLE: SITE CONSTRUCTION DETAILS

SCALE	PROJECT NO.	SHEET
NONE	WF-451	No. C9
	DATE	Of C11
	DEC. 19, 2008	

2/10/2009 9:27:44 AM N:\DGN\WF\451\SHEETS\WF451-C9-DET.LLDGN