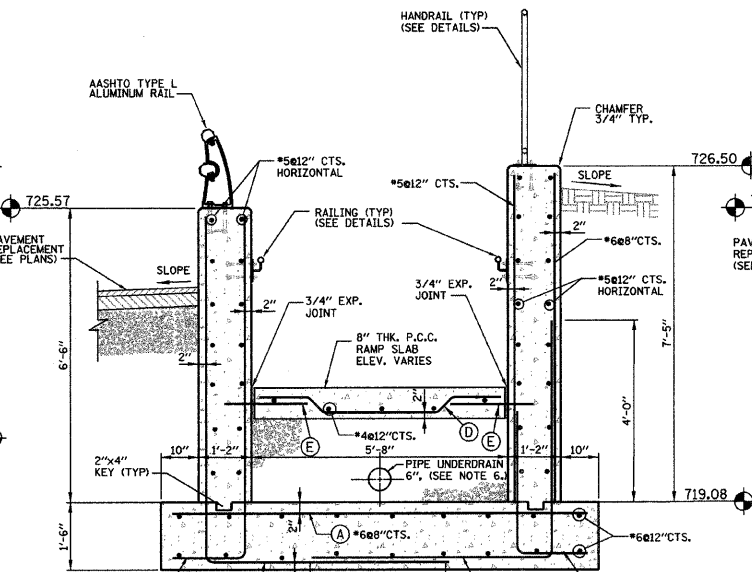
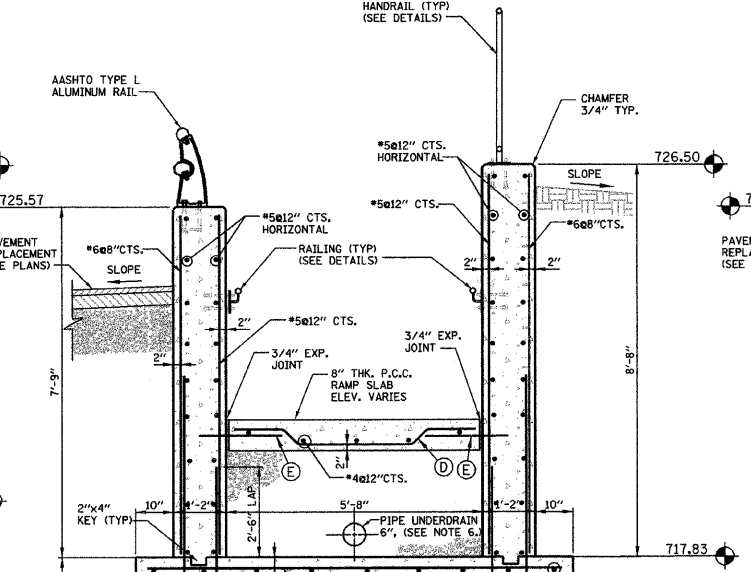


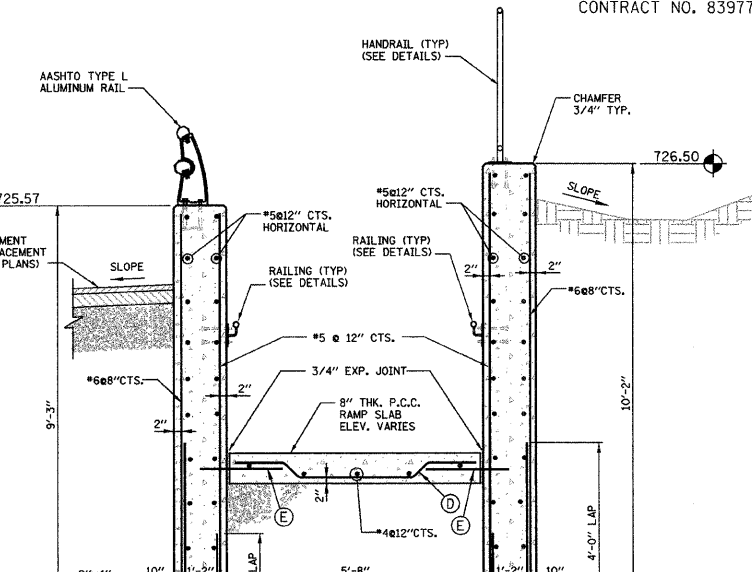
SECTION 2
 SCALE: 1/2" = 1'-0"
 S2



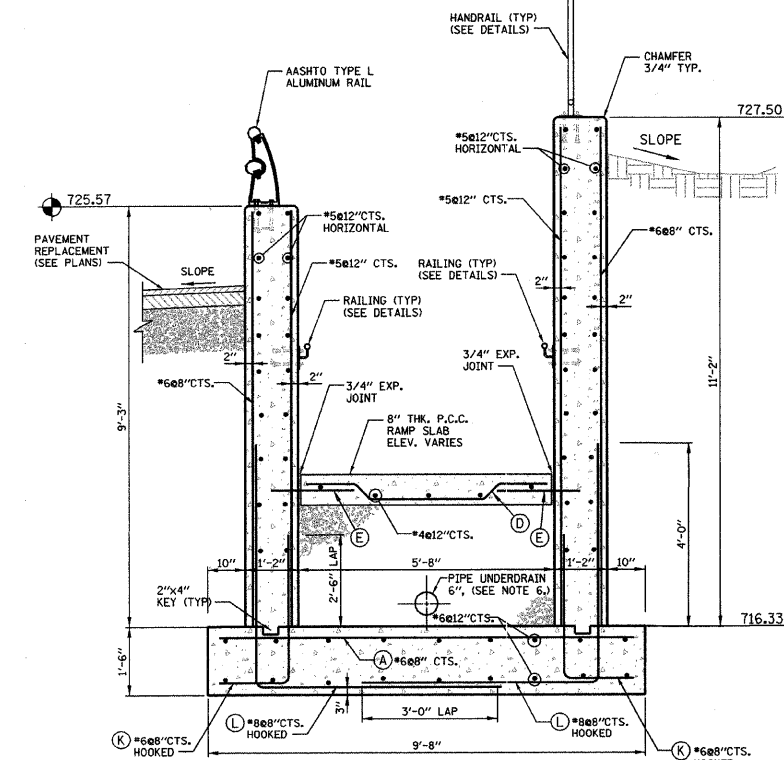
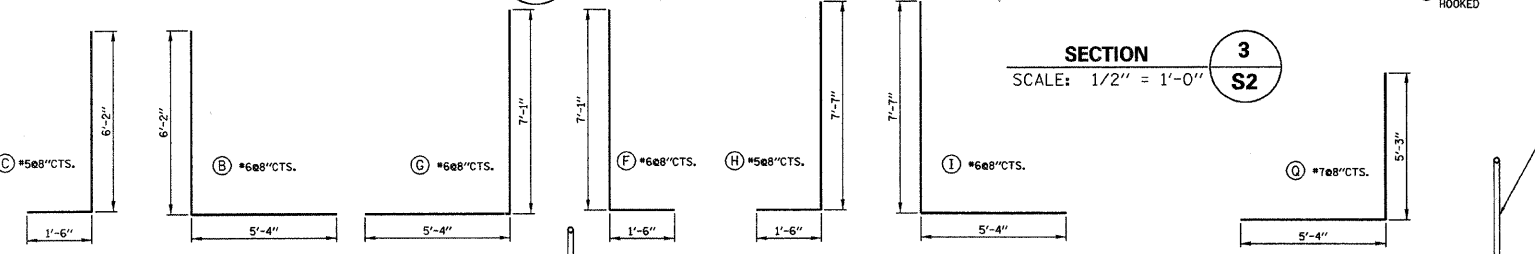
SECTION 3
 SCALE: 1/2" = 1'-0"
 S2



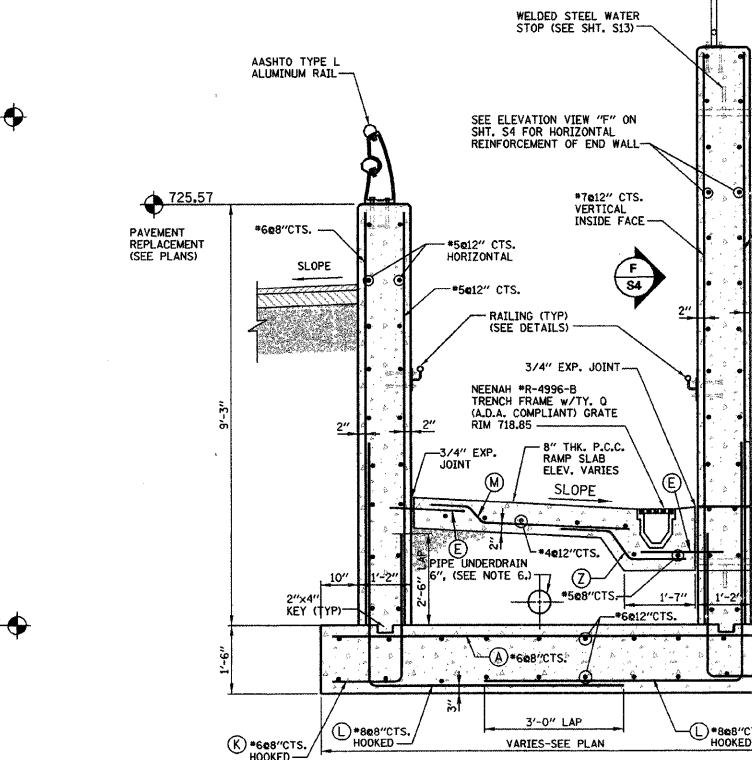
SECTION 4
 SCALE: 1/2" = 1'-0"
 S2



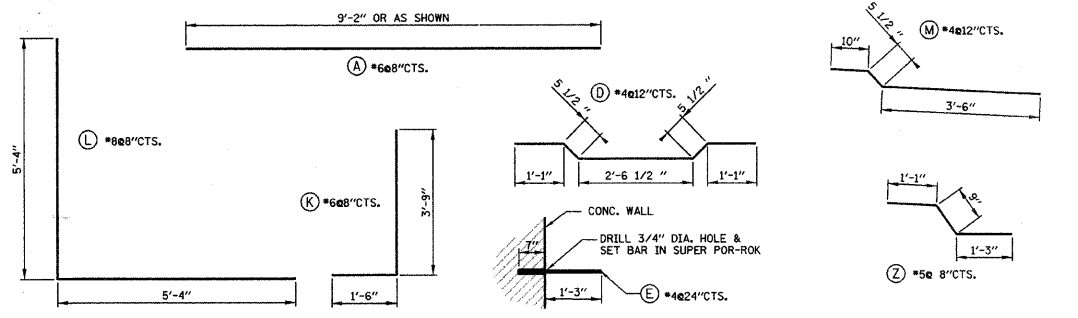
SECTION 5
 SCALE: 1/2" = 1'-0"
 S2



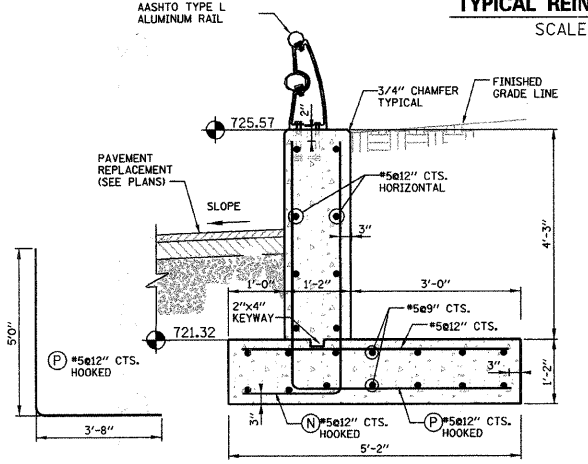
SECTION 6
 SCALE: 1/2" = 1'-0"
 S2



SECTION 7
 SCALE: 1/2" = 1'-0"
 S2



TYPICAL REINFORCEMENT DETAILS
 SCALE: 1/2" = 1'-0"



NOTE: ALL REBAR CLEARANCE DIMENSIONS ARE CLEAR COVER (NOT TO THE CENTER OF THE BAR).

TYPICAL SECTION THROUGH CONCRETE RETAINING WALL
 SCALE: 1/2" = 1'-0"
 S2

- NOTES:**
- ALL CONCRETE SHALL BE CLASS "SI".
 - ALL REBAR CLEARANCE DIMENSIONS ARE CLEAR COVER (NOT TO THE CENTER OF THE BAR).
 - ALL CONCRETE WALL SURFACES TO BE EXPOSED IN THE FINAL CONDITION SHALL HAVE VOIDS FILLED WITH NON-SHRINK GROUT AND BE RUBBED SMOOTH. EXPOSED WALL SURFACES SHALL THEN BE FINISHED WITH A GLOSS EPOXY LIGHT GRAY PROTECTIVE COATING (TNEC OR APPROV. EQUAL) ACCORDING TO THE SPECIFICATIONS TO A HEIGHT OF SIX INCHES BELOW THE FINISHED GRADE ELEVATION.
 - ALL CONCRETE SURFACES THAT WILL BE IN CONTACT WITH EARTH BACKFILL AND / OR PAVEMENT SHALL BE PROVIDED WITH WATERPROOF TAR COATING ON EXTERIOR OF CONCRETE WALLS TO A HEIGHT OF 6 INCHES BELOW THE FINISHED GRADE ELEVATION.
 - RAMP SURFACES AND TUNNEL FLOOR: MEMBRANE CURING SHALL BE APPLIED AS SPECIFIED IN SECTION 722 OF THE STATE OF ILLINOIS "STANDARD SPECIFICATIONS FOR ROAD AND BRIDGE CONSTRUCTION", LATEST EDITION. W.R. MEADOWS VOCOMP-20 CURE & SEAL, OR APPROVED EQUAL, SHALL BE USED PER MANUFACTURER'S SPECIFICATIONS. FINISHED SURFACES SHALL RECEIVE A LIGHT BROOM FINISH AT RIGHT ANGLES TO THE EDGES OF THE RAMP. EXPANSION AND CONTRACTION JOINTS SHALL BE CONSTRUCTED PER I.D.O.T. STD. 42001-07 WHERE SHOWN ON TH PLANS.
 - PIPE UNDERDRAIN SHALL BE PERFORATED CORRUGATED POLYETHYLENE TUBING WITH FILTER SOCK PER I.D.O.T. 1040.04
 - SEE SHT. S4 FOR SOUTH RAMP BILL OF MATERIALS.

This drawing shall not be used nor reproduced either wholly or in part except when authorized by the engineer - Rempe-Sharpe

ACTION	NAME	No.	Date	Revisions	By
Design	J.B.				
Drawn	D.B.E.				
Checked	S.S.				

REMPE-SHARPE
 CONSULTING ENGINEERS
 IL P.D.F. LICENSE NO. 184-000895
 324 WEST STATE STREET - GENEVA, ILLINOIS 60134
 Telephone (630) 232-0827 - Fax (630) 232-1629

PROJECT
**PEDESTRIAN UNDERPASS
 AT METRA STATION
 WINFIELD, ILLINOIS**

SHEET TITLE
**SOUTH RAMP
 SECTIONS AND DETAILS**

SCALE	PROJECT NO.	SHEET
NOTED	WF-451	No. S3
	DATE	Of S16
	DEC. 19, 2008	