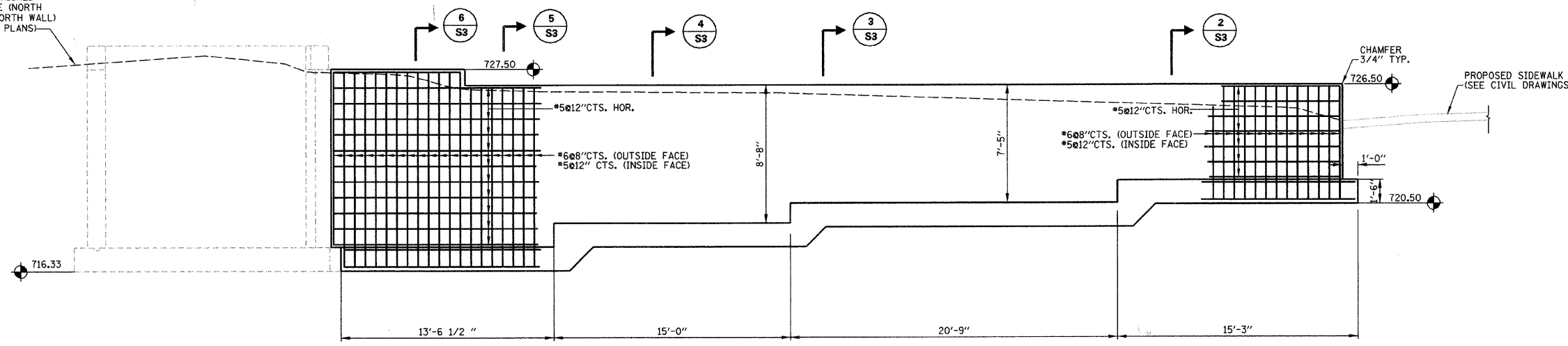
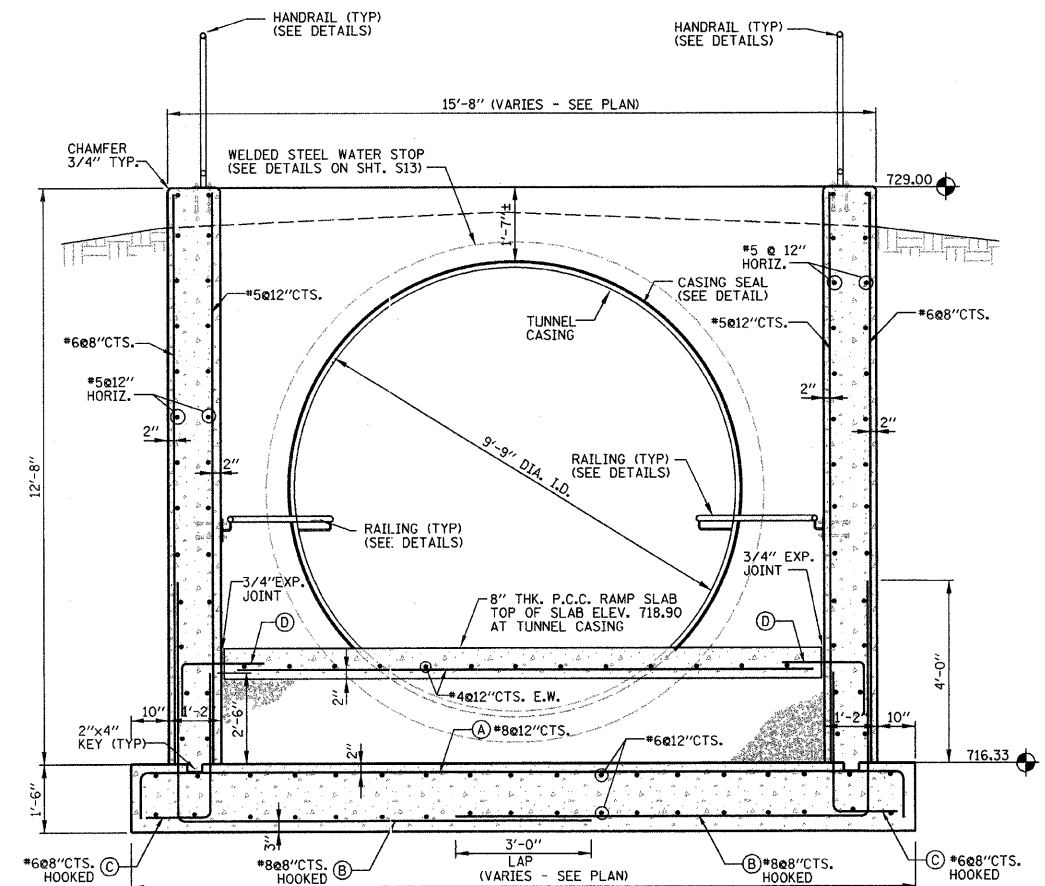


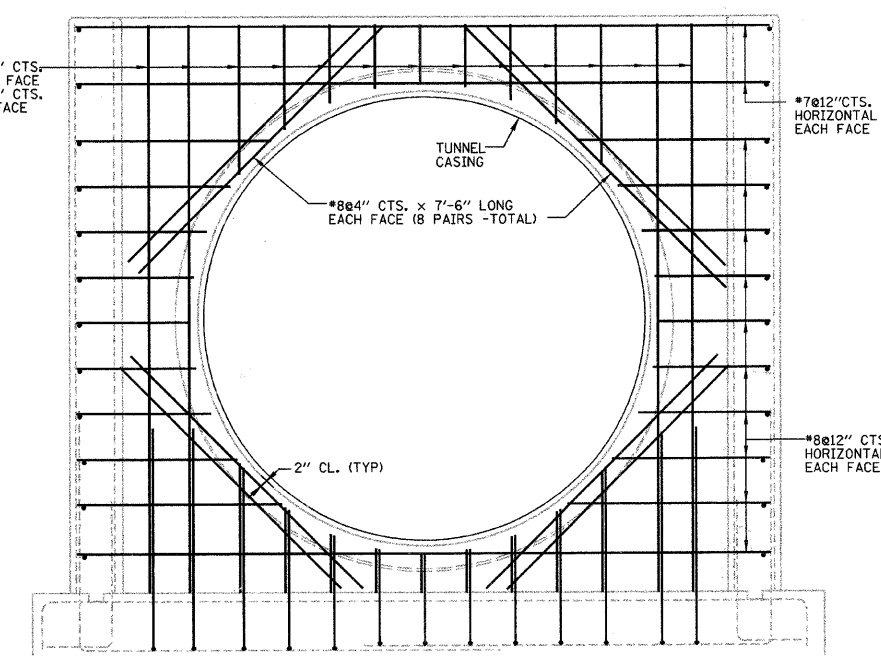
APPROX. FINISHED GRADE LINE (NORTH FACE OF NORTH WALL) (SEE CIVIL PLANS)



E NORTH WALL ELEVATION
S2 SCALE: 1/4" = 1'-0"



SECTION 8
S2 SCALE: 1/2" = 1'-0"

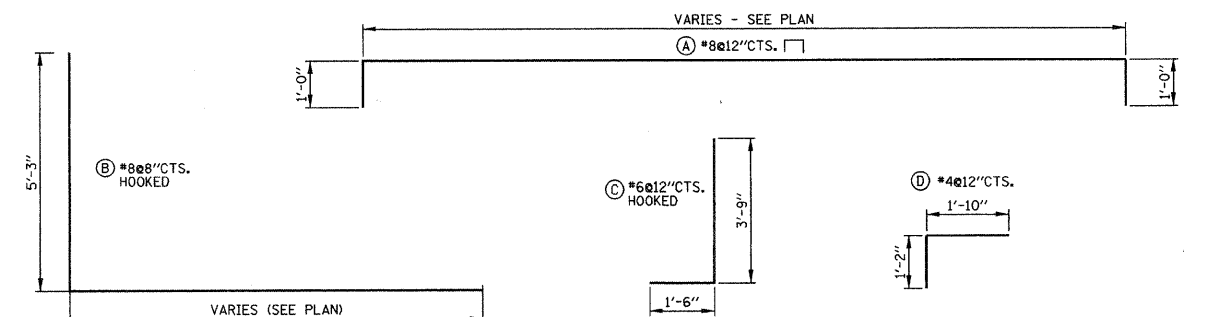


ELEVATION F
S2 SCALE: 1/2" = 1'-0"

BILL OF MATERIAL - SOUTH RAMP STRUCTURE (SHT. S4)

DESCRIPTION	UNIT	QUANTITY
Steel Sheet Piling (Special)	SQ FT	1,000
Structure Excavation (Special)	CU YD	525
Concrete Structure (Base Slab)	CU YD	55
Concrete Structure (Walls)	CU YD	65
Concrete Structure (8" Thick Ramp)	CU YD	12
Reinforcement Bars	POUND	20,190
Pipe Underdrain 6", Special	FOOT	175
Pipe Underdrain Cleanout Complete	EACH	3
Porous Granular Backfill, Special	CU YD	170
Trench Backfill, Special	CU YD	255
Pedestrian Railing	FOOT	156
Pipe Handrail, Special	FOOT	87
Rubbed Finish	SQ FT	1,700
Painting	SQ FT	1,700
Aluminum Railing, Type L	FOOT	96

- NOTES:**
- ALL CONCRETE SHALL BE CLASS "SI".
 - ALL REBAR CLEARANCE DIMENSIONS ARE CLEAR COVER (NOT TO THE CENTER OF THE BAR).
 - ALL CONCRETE WALL SURFACES TO BE EXPOSED IN THE FINAL CONDITION SHALL HAVE Voids FILLED WITH NON-SHRINK GROUT AND BE RUBBED SMOOTH. EXPOSED WALL SURFACES SHALL THEN BE FINISHED WITH A GLOSS EPOXY LIGHT GRAY PROTECTIVE COATING (TNEC OR APPROV. EQUAL) ACCORDING TO THE SPECIFICATIONS TO A HEIGHT OF SIX INCHES BELOW THE FINISHED GRADE ELEVATION.
 - ALL CONCRETE SURFACES THAT WILL BE IN CONTACT WITH EARTH BACKFILL AND / OR PAVEMENT SHALL BE PROVIDED WITH WATERPROOF TAR EPOXY PAINT COATING ON EXTERIOR OF CONCRETE WALLS TO A HEIGHT OF 6 INCHES BELOW THE FINISHED GRADE ELEVATION.
 - RAMP SURFACES AND TUNNEL FLOOR: MEMBRANE CURING SHALL BE APPLIED AS SPECIFIED IN SECTION 722 OF THE STATE OF ILLINOIS "STANDARD SPECIFICATIONS FOR ROAD AND BRIDGE CONSTRUCTION", LATEST EDITION. W.R. MEADOWS VOCOMP-20 CURE & SEAL, OR APPROVED EQUAL, SHALL BE USED PER MANUFACTURER'S SPECIFICATIONS. FINISHED SURFACES SHALL RECEIVE A LIGHT BROOM FINISH AT RIGHT ANGLES TO THE EDGES OF THE RAMP. EXPANSION AND CONTRACTION JOINTS SHALL BE CONSTRUCTED PER I.D.O.T. STD. 420001-07 WHERE SHOWN ON THE PLANS.



TYPICAL REINFORCEMENT DETAILS
SCALE: 1/2" = 1'-0"

1/6/2009 4:25:51 PM N:\DDM\WF\451\SHS\STRUCTURAL\WF451-S4-SRIMP-SECT-ELEV.DGN

This drawing shall not be used nor reproduced either wholly or in part except when authorized by the engineer - Rempe-Sharpe

ACTION	NAME	No.	Date	Revisions	By
Design	J.B.				
Drawn	D.B.E.				
Checked	S.S.				

REMPE-SHARPE CONSULTING ENGINEERS
IL P.D.F. LICENSE NO. 184-000895
324 WEST STATE STREET - GENEVA, ILLINOIS 60134
Telephone (630) 232-0827 - Fax (630) 232-1629

PROJECT
PEDESTRIAN UNDERPASS AT METRA STATION WINFIELD, ILLINOIS

SHEET TITLE
SOUTH RAMP SECTIONS AND ELEVATIONS

SCALE	PROJECT NO.	SHEET
NOTED	WF-451	No. S4
	DATE	of S16
	DEC. 19, 2008	