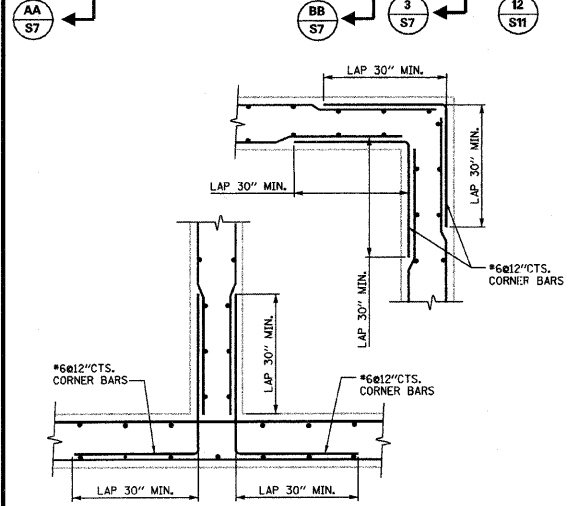
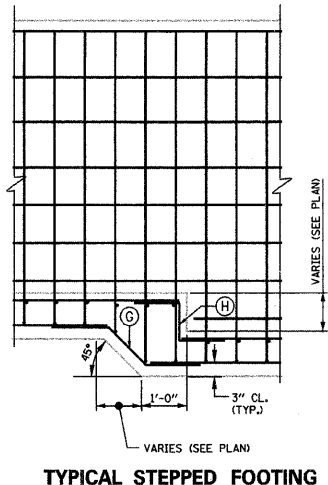


**FOUNDATION PLAN - BELOW TOP SLAB**  
SCALE: 1/4" = 1'-0"

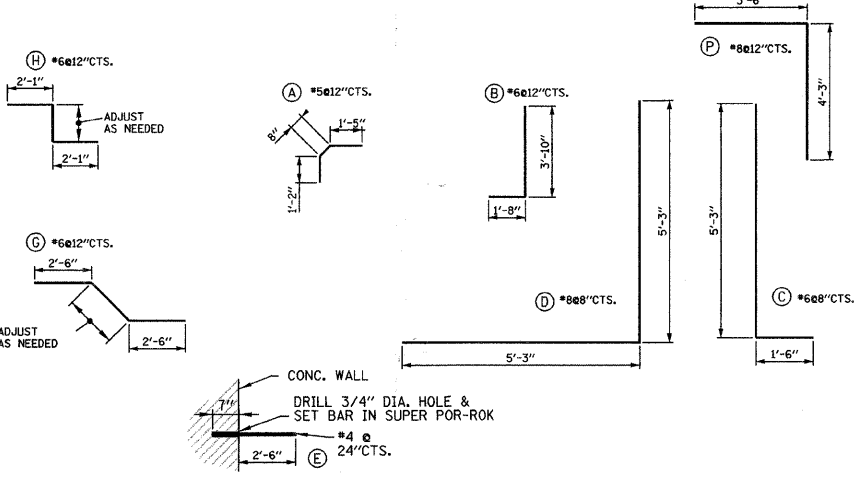
- NOTES:**
1. ALL CONCRETE SHALL BE CLASS "SI".
  2. ALL REBAR CLEARANCE DIMENSIONS ARE CLEAR COVER (NOT TO THE CENTER OF THE BAR).
  3. ALL CONCRETE WALL SURFACES TO BE EXPOSED IN THE FINAL CONDITION SHALL HAVE VOIDS FILLED WITH NON-SHRINK GROUT AND BE RUBBED SMOOTH. EXPOSED WALL SURFACES SHALL THEN BE FINISHED WITH A GLOSS EPOXY LIGHT GRAY PROTECTIVE COATING (TNEC OR APPROV. EQUAL) ACCORDING TO THE SPECIFICATIONS TO A HEIGHT OF SIX INCHES BELOW THE FINISHED GRADE ELEVATION.
  4. ALL CONCRETE SURFACES THAT WILL BE IN CONTACT WITH EARTH BACKFILL AND / OR PAVEMENT SHALL BE PROVIDED WITH WATERPROOF TAR EPOXY PAINT COATING ON EXTERIOR OF CONCRETE WALLS TO A HEIGHT OF 6 INCHES BELOW THE FINISHED GRADE ELEVATION.
  5. RAMP SURFACES AND TUNNEL FLOOR: MEMBRANE CURING SHALL BE APPLIED AS SPECIFIED IN SECTION 722 OF THE STATE OF ILLINOIS "STANDARD SPECIFICATIONS FOR ROAD AND BRIDGE CONSTRUCTION", LATEST EDITION. W.R. MEADOWS VOCOMP-20 CURE & SEAL OR APPROVED EQUAL SHALL BE USED PER MANUFACTURER'S SPECIFICATIONS. FINISHED SURFACES SHALL RECEIVE A LIGHT BROOM FINISH AT RIGHT ANGLES TO THE EDGES OF THE RAMP. EXPANSION AND CONTRACTION JOINTS SHALL BE CONSTRUCTED PER I.D.O.T. STD. 42001-07 WHERE SHOWN ON THE PLANS.
  6. PIPE UNDERDRAIN SHALL BE PERFORMED CORRUGATED POLYETHYLENE TUBING WITH FILTER SOCK PER I.D.O.T. 1040.04
  7. SEE SHT. S7 FOR NORTH RAMP BILL OF MATERIALS.
  8. EXP. JT. = 3/4" PREMOULDED EXPANSION JOINT (AT WALLS)  
L.C.J. = LONGITUDINAL CONTRACTION JOINTS PER IDOT STD. 420001-07  
T.C.J. = TRANSVERSE CONTRACTION JOINTS PER IDOT STD. 420001-07.



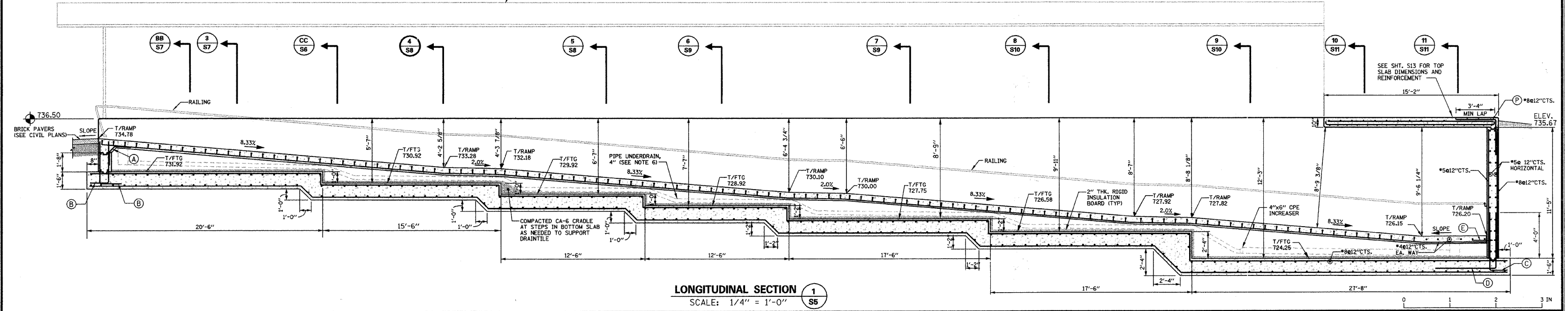
**TYPICAL CORNER REINFORCEMENT**  
SCALE: 1/2" = 1'-0"



**TYPICAL STEPPED FOOTING**  
SCALE: 1/2" = 1'-0"



**TYPICAL REINFORCEMENT DETAILS**  
SCALE: 1/2" = 1'-0"



**LONGITUDINAL SECTION 1**  
SCALE: 1/4" = 1'-0"

This drawing shall not be used nor reproduced either wholly or in part except when authorized by the engineer - Rempe-Sharpe

ACTION	NAME	No.	Date	Revisions	By
Design	J.B.				
Drawn	D.B.E.				
Checked	S.S.				

**REMPE-SHARPE CONSULTING ENGINEERS**  
IL P.D.F. LICENSE NO. 184-000895  
324 WEST STATE STREET - GENEVA, ILLINOIS 60134  
Telephone (630) 232-0827 - Fax (630) 232-1629

PROJECT  
**PEDESTRIAN UNDERPASS AT METRA STATION WINFIELD, ILLINOIS**

SHEET TITLE  
**NORTH RAMP PLAN & DETAILS**

SCALE	PROJECT NO.	SHEET
NOTED	WF-451	No. <b>S5</b>
	DATE	Of <b>S16</b>
	DEC. 19, 2008	

12/19/2008 3:07:34 PM N:\DDN\WF451\SHEETS\STRUCTURAL\WF451-S5-NRAMP-PLAN.DGN