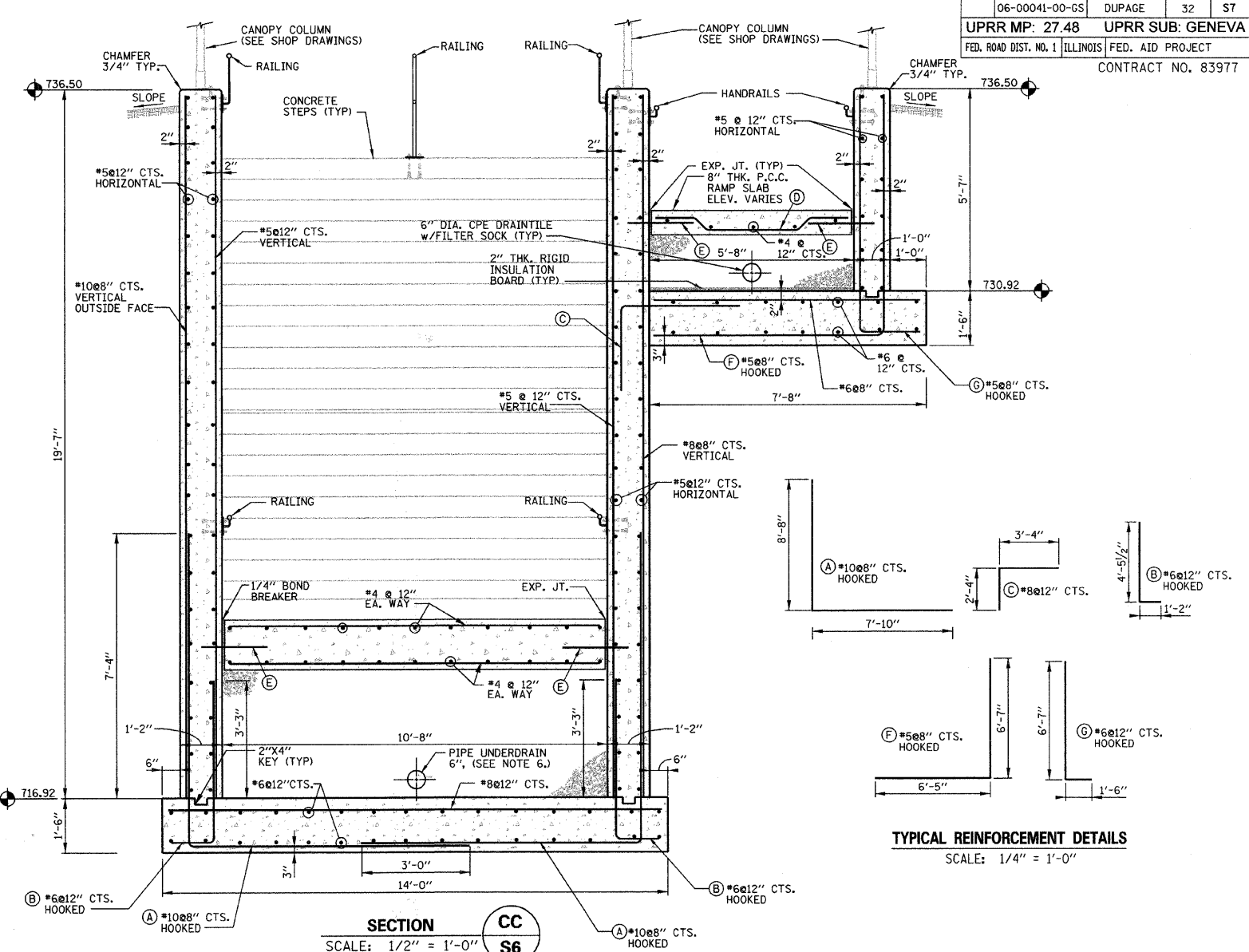
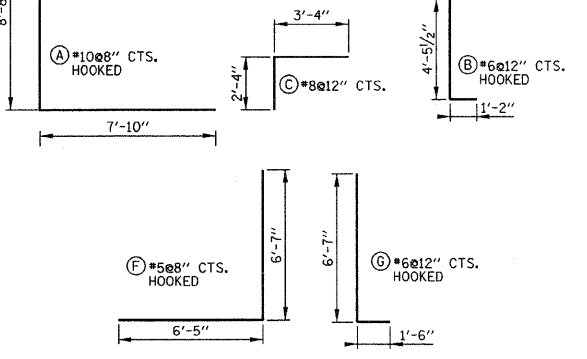


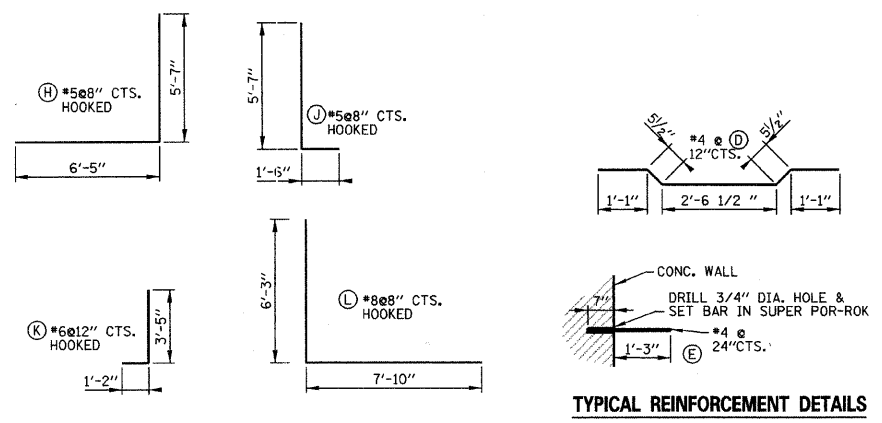
SECTION 3 S6
SCALE: 1/2" = 1'-0"



SECTION CC S6
SCALE: 1/2" = 1'-0"



TYPICAL REINFORCEMENT DETAILS
SCALE: 1/4" = 1'-0"



TYPICAL REINFORCEMENT DETAILS
SCALE: 1/4" = 1'-0"

BILL OF MATERIAL - NORTH RAMP STRUCTURE (SHT. S7)

DESCRIPTION	UNIT	QUANTITY
Steel Sheet Piling (Special)	SQ FT	5,500
Temporary Steel Sheet Piling (Special)	SQ FT	2,200
Structure Excavation (Special)	CU YD	2,010
Concrete Structure (Base Slab)	CU YD	200
Concrete Structure (Walls)	CU YD	265
Concrete Structure (Top Slab)	CU YD	50
Concrete Structure (8" Thick Ramp)	CU YD	40
Concrete Structure (Stairs)	CU YD	22
Reinforcement Bars	POUND	91,650
Insulation	SQ FT	750
Pipe Underdrain 4", Special	FOOT	105
Pipe Underdrain 6", Special	FOOT	180
Underdrain Cleanout, Complete	EACH	5
Porous Granular Backfill, Special	CU YD	275
Trench Backfill, Special	CU YD	635
Pedestrian Railing	FOOT	482
Pipe Handrail, Special	FOOT	34
Rubbed Finish	SQ FT	6,000
Painting	SQ FT	6,000
Prefab Canopy Assembly (11'-10" Wide) Complete	FOOT	32
Prefab Canopy Assembly (6'-8" Wide) Complete	FOOT	106

- NOTES:**
- ALL CONCRETE SHALL BE CLASS "SI".
 - ALL REBAR CLEARANCE DIMENSIONS ARE CLEAR COVER (NOT TO THE CENTER OF THE BAR).
 - ALL CONCRETE WALL SURFACES TO BE EXPOSED IN THE FINAL CONDITION SHALL HAVE Voids FILLED WITH NON-SHRINK GROUT AND BE RUBBED SMOOTH. EXPOSED WALL SURFACES SHALL THEN BE FINISHED WITH A GLOSS EPOXY LIGHT GRAY PROTECTIVE COATING (TNECO OR APPROV. EQUAL) ACCORDING TO THE SPECIFICATIONS TO A HEIGHT OF SIX INCHES BELOW THE FINISHED GRADE ELEVATION.
 - ALL CONCRETE SURFACES THAT WILL BE IN CONTACT WITH EARTH BACKFILL AND / OR PAVEMENT SHALL BE PROVIDED WITH WATERPROOF TAR EPOXY PAINT COATING ON EXTERIOR OF CONCRETE WALLS TO A HEIGHT OF 6 INCHES BELOW THE FINISHED GRADE ELEVATION.
 - RAMP SURFACES AND TUNNEL FLOOR MEMBRANE CURING SHALL BE APPLIED AS SPECIFIED IN SECTION 722 OF THE STATE OF ILLINOIS "STANDARD SPECIFICATIONS FOR ROAD AND BRIDGE CONSTRUCTION", LATEST EDITION. W.R. MEADOWS VOCOMP-20 CURE & SEAL, OR APPROVED EQUAL, SHALL BE USED PER MANUFACTURER'S SPECIFICATIONS. FINISHED SURFACES SHALL RECEIVE A LIGHT BROOM FINISH AT RIGHT ANGLES TO THE EDGES OF THE RAMP. EXPANSION AND CONTRACTION JOINTS SHALL BE CONSTRUCTED PER I.D.O.T. STD. 42001-07 WHERE SHOWN ON TH PLANS.
 - PIPE UNDERDRAIN SHALL BE PERFORATED CORRUGATED POLYETHYLENE TUBING WITH FILTER SOCK PER I.D.O.T. 1040.04
 - SEE SHT. S7 FOR NORTH RAMP BILL OF MATERIALS.

12/19/2008 3:18:46 PM N:\DGN\WF\51\51\STRUCT\STRUCT\WF451-S7-NRAMP-SECT.DGN

This drawing shall not be used nor reproduced either wholly or in part except when authorized by the engineer - Rempe-Sharpe

ACTION	NAME	No.	Date	Revisions	By
Design	J.B.				
Drawn	D.B.E.				
Checked	S.S.				

REMPE-SHARPE CONSULTING ENGINEERS
IL P.D.F. LICENSE NO. 184-000895
324 WEST STATE STREET - GENEVA, ILLINOIS 60134
Telephone (630) 232-0827 - Fax (630) 232-1629

PROJECT
PEDESTRIAN UNDERPASS AT METRA STATION WINFIELD, ILLINOIS

SHEET TITLE
NORTH RAMP SECTIONS AND DETAILS

SCALE	PROJECT NO.	SHEET
NOTED	WF-451	No. S7
	DATE	Of S16
	DEC. 19, 2008	