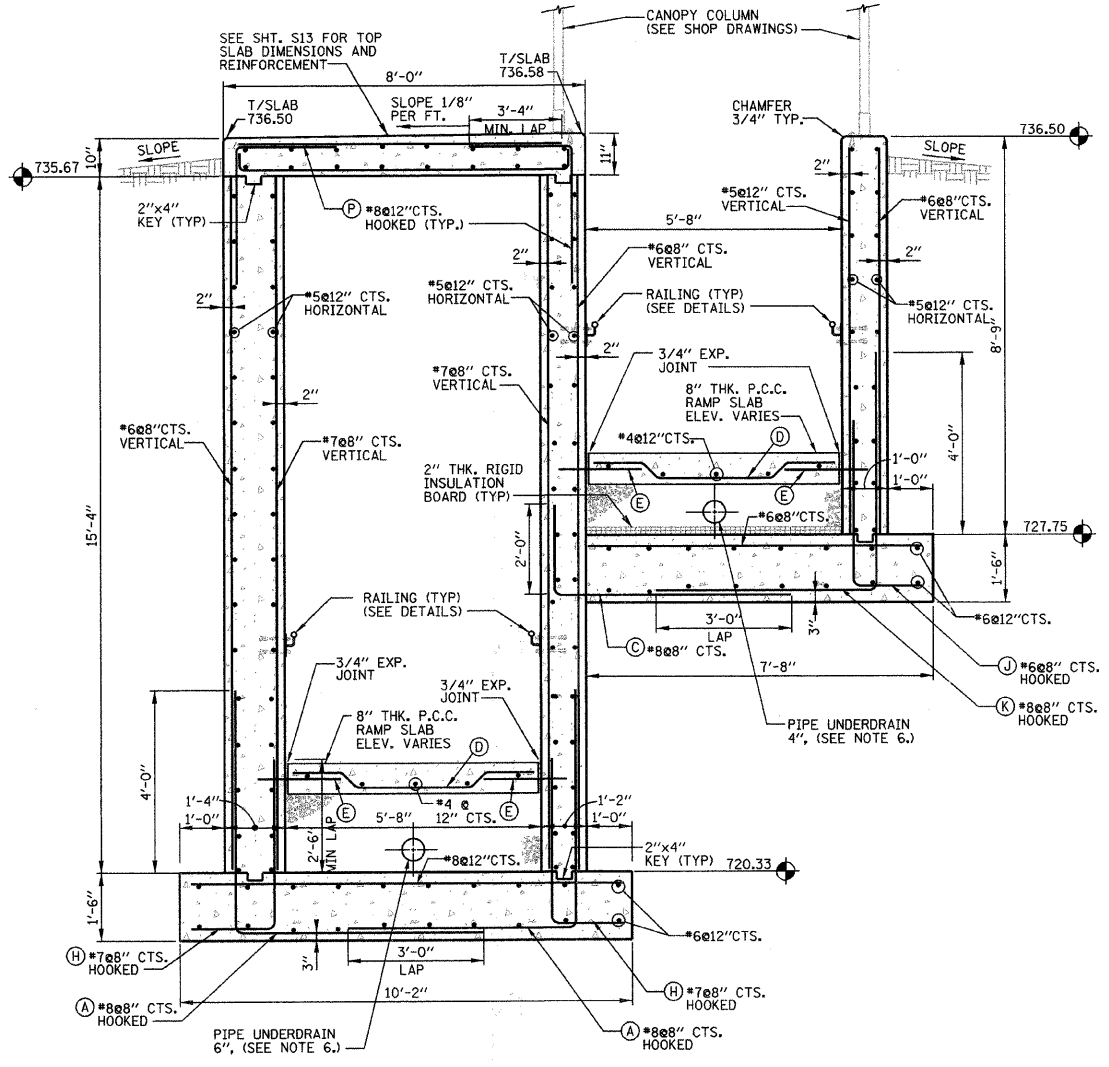
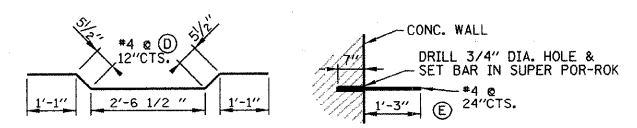


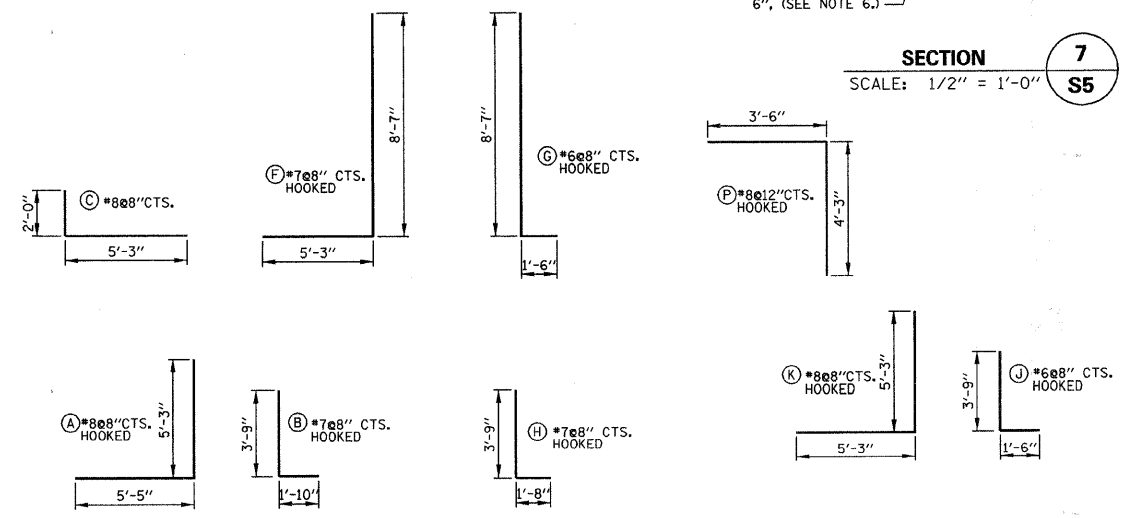
**SECTION 6**  
SCALE: 1/2" = 1'-0"  
S5



**SECTION 7**  
SCALE: 1/2" = 1'-0"  
S5



**TYPICAL REINFORCEMENT DETAILS**  
SCALE: 1/2" = 1'-0"



**TYPICAL REINFORCEMENT DETAILS**  
SCALE: 1/4" = 1'-0"

- NOTES:**
- ALL CONCRETE SHALL BE CLASS "SI".
  - ALL REBAR CLEARANCE DIMENSIONS ARE CLEAR COVER (NOT TO THE CENTER OF THE BAR).
  - ALL CONCRETE WALL SURFACES TO BE EXPOSED IN THE FINAL CONDITION SHALL HAVE Voids FILLED WITH NON-SHRINK GROUT AND BE RUBBED SMOOTH. EXPOSED WALL SURFACES SHALL THEN BE FINISHED WITH A GLOSS EPOXY LIGHT GRAY PROTECTIVE COATING (TNEC OR APPROV. EQUAL) ACCORDING TO THE SPECIFICATIONS TO A HEIGHT OF SIX INCHES BELOW THE FINISHED GRADE ELEVATION.
  - ALL CONCRETE SURFACES THAT WILL BE IN CONTACT WITH EARTH BACKFILL AND / OR PAVEMENT SHALL BE PROVIDED WITH WATERPROOF TAR EPOXY PAINT COATING ON EXTERIOR OF CONCRETE WALLS TO A HEIGHT OF 6 INCHES BELOW THE FINISHED GRADE ELEVATION.
  - RAMP SURFACES AND TUNNEL FLOOR: MEMBRANE CURING SHALL BE APPLIED AS SPECIFIED IN SECTION 722 OF THE STATE OF ILLINOIS "STANDARD SPECIFICATIONS FOR ROAD AND BRIDGE CONSTRUCTION", LATEST EDITION. W.R. MEADOWS VOCOMP-20 CURE & SEAL, OR APPROVED EQUAL, SHALL BE USED PER MANUFACTURER'S SPECIFICATIONS. FINISHED SURFACES SHALL RECEIVE A LIGHT BROOM FINISH AT RIGHT ANGLES TO THE EDGES OF THE RAMP. EXPANSION AND CONTRACTION JOINTS SHALL BE CONSTRUCTED PER I.D.O.T. STD. 420001-07 WHERE SHOWN ON THE PLANS.
  - PIPE UNDERDRAIN SHALL BE PERFORATED CORRUGATED POLYETHYLENE TUBING WITH FILTER SOCK PER I.D.O.T. 1040.04
  - SEE SHT. S7 FOR NORTH RAMP BILL OF MATERIALS.

1/2/2009 4:28:15 PM N:\DGN\WF451\SS\STRUCTURAL\WF451-SS-WRIMP-SECT.DGN

This drawing shall not be used nor reproduced either wholly or in part except when authorized by the engineer - Rempe-Sharp

ACTION	NAME	No.	Date	Revisions	By
Design	J.B.				
Drawn	D.B.E.				
Checked	S.S.				

**REMPE-SHARPE CONSULTING ENGINEERS**  
IL P.D.F. LICENSE NO. 184-000896  
324 WEST STATE STREET - GENEVA, ILLINOIS 60134  
Telephone (630) 232-0827 - Fax (630) 232-1629

PROJECT  
**PEDESTRIAN UNDERPASS AT METRA STATION WINFIELD, ILLINOIS**

SHEET TITLE  
**NORTH RAMP SECTIONS AND DETAILS**

SCALE	PROJECT NO.	SHEET
NOTED	WF-451	No. <b>S9</b>
	DATE	Of <b>S16</b>
	DEC. 19, 2008	