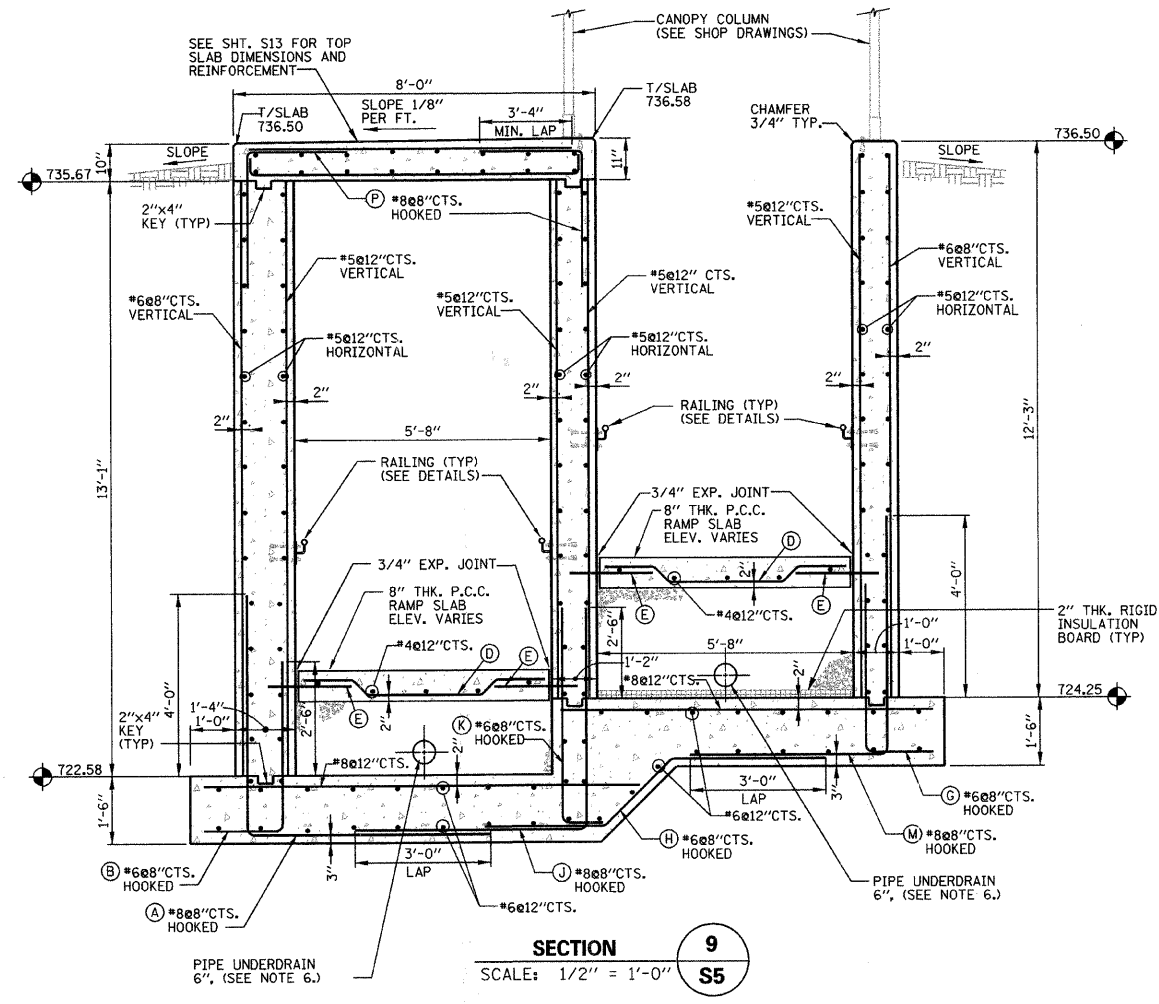
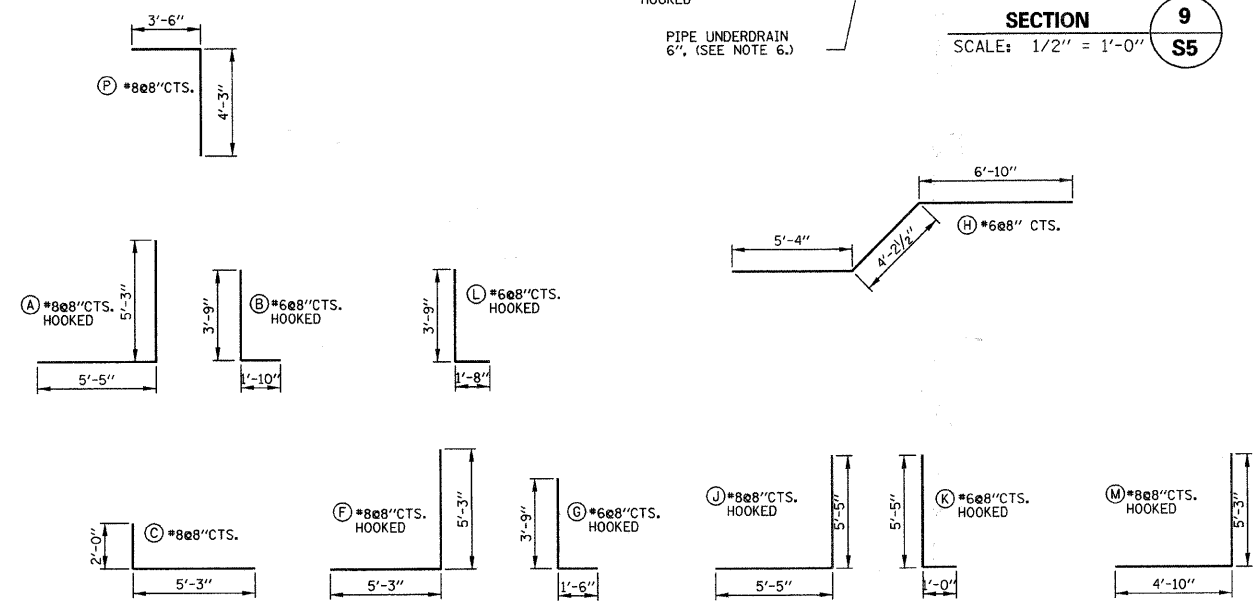
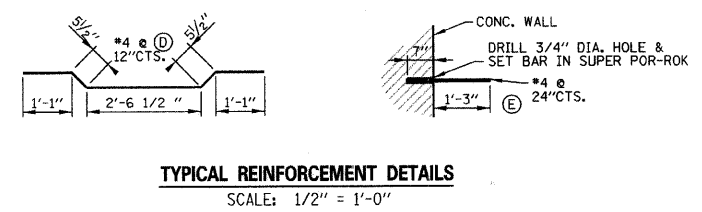


SECTION 8
SCALE: 1/2" = 1'-0"
S5



SECTION 9
SCALE: 1/2" = 1'-0"
S5



- NOTES:**
- ALL CONCRETE SHALL BE CLASS "SI".
 - ALL REBAR CLEARANCE DIMENSIONS ARE CLEAR COVER (NOT TO THE CENTER OF THE BAR).
 - ALL CONCRETE WALL SURFACES TO BE EXPOSED IN THE FINAL CONDITION SHALL HAVE Voids FILLED WITH NON-SHRINK GROUT AND BE RUBBED SMOOTH. EXPOSED WALL SURFACES SHALL THEN BE FINISHED WITH A GLOSS EPOXY LIGHT GRAY PROTECTIVE COATING (NEMEC OR APPROV. EQUAL) ACCORDING TO THE SPECIFICATIONS TO A HEIGHT OF SIX INCHES BELOW THE FINISHED GRADE ELEVATION.
 - ALL CONCRETE SURFACES THAT WILL BE IN CONTACT WITH EARTH BACKFILL AND / OR PAVEMENT SHALL BE PROVIDED WITH WATERPROOF TAR EPOXY PAINT COATING ON EXTERIOR OF CONCRETE WALLS TO A HEIGHT OF 6 INCHES BELOW THE FINISHED GRADE ELEVATION.
 - RAMP SURFACES AND TUNNEL FLOOR: MEMBRANE CURING SHALL BE APPLIED AS SPECIFIED IN SECTION 722 OF THE STATE OF ILLINOIS "STANDARD SPECIFICATIONS FOR ROAD AND BRIDGE CONSTRUCTION", LATEST EDITION. W.R. MEADOWS VOCOMP-20 CURE & SEAL, OR APPROVED EQUAL, SHALL BE USED PER MANUFACTURER'S SPECIFICATIONS. FINISHED SURFACES SHALL RECEIVE A LIGHT BROOM FINISH AT RIGHT ANGLES TO THE EDGES OF THE RAMP. EXPANSION AND CONTRACTION JOINTS SHALL BE CONSTRUCTED PER I.D.O.T. STD. 420001-07 WHERE SHOWN ON THE PLANS.
 - PIPE UNDERDRAIN SHALL BE PERFORMED CORRUGATED POLYETHYLENE TUBING WITH FILTER SOCK PER I.D.O.T. 1040.04
 - SEE SHT. S7 FOR NORTH RAMP BILL OF MATERIALS.

1/8/2009 4:30:06 PM N:\DOR\MP\451\SHEETS\STRUCTURAL\WF451-S10-NRAMP-SECT.DGN

This drawing shall not be used nor reproduced either wholly or in part except when authorized by the engineer - Rempe-Sharp		ACTION	NAME				
Design	J.B.	Drawn	D.B.E.	Checked	S.S.	No. Date	Revisions
							By

REMPE-SHARPE CONSULTING ENGINEERS
IL P.D.F. LICENSE NO. 184-000895
324 WEST STATE STREET - GENEVA, ILLINOIS 60134
Telephone (630) 232-0827 - Fax (630) 232-1629

PROJECT
PEDESTRIAN UNDERPASS AT METRA STATION WINFIELD, ILLINOIS

SHEET TITLE
NORTH RAMP SECTIONS AND DETAILS

SCALE	PROJECT NO.	SHEET
NOTED	WF-451	No. S10
	DATE	Of S16
	DEC. 19, 2008	