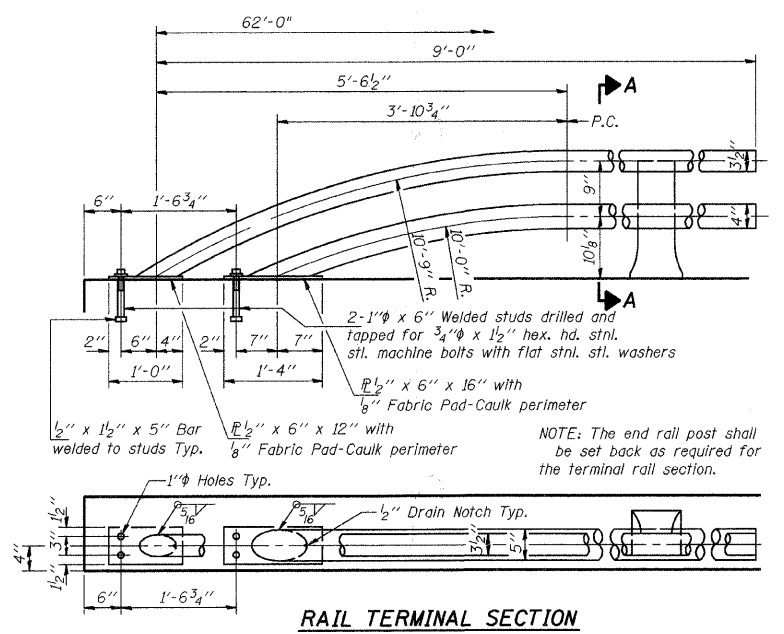
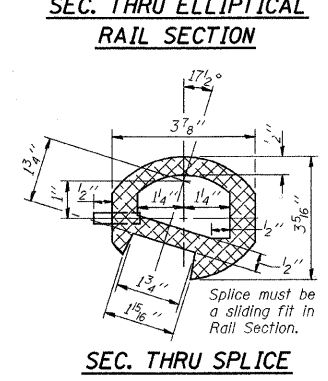
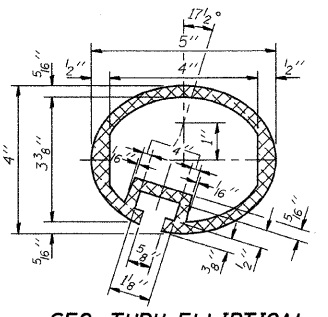
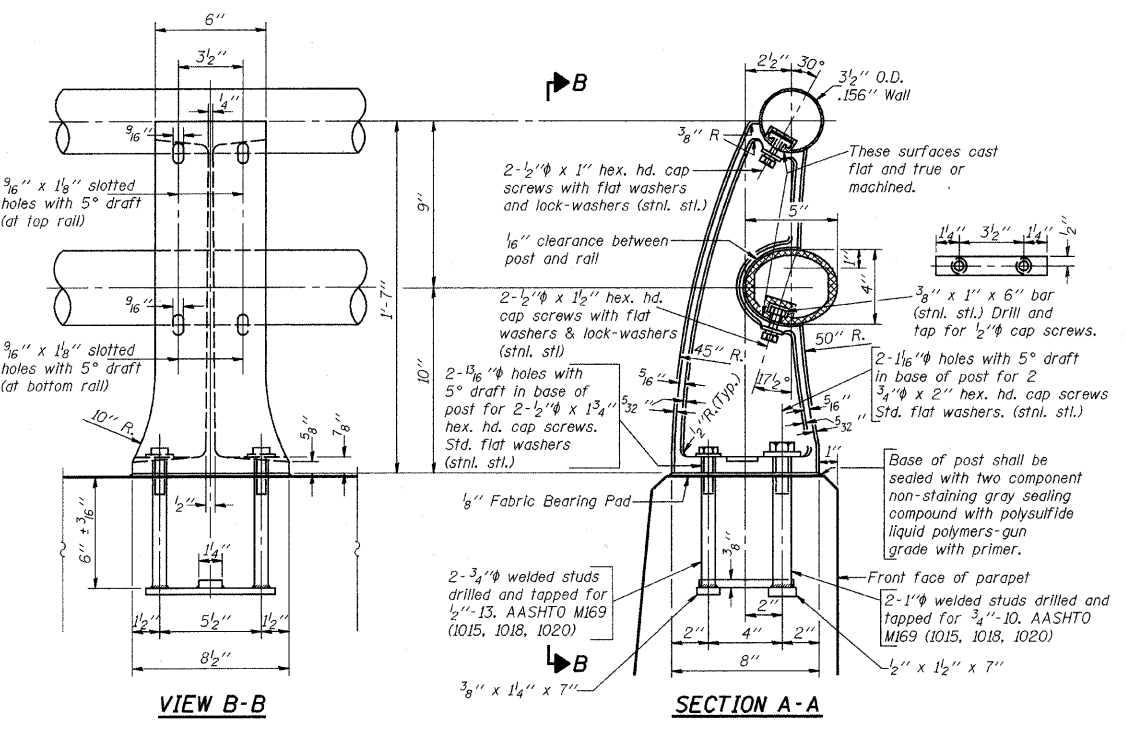
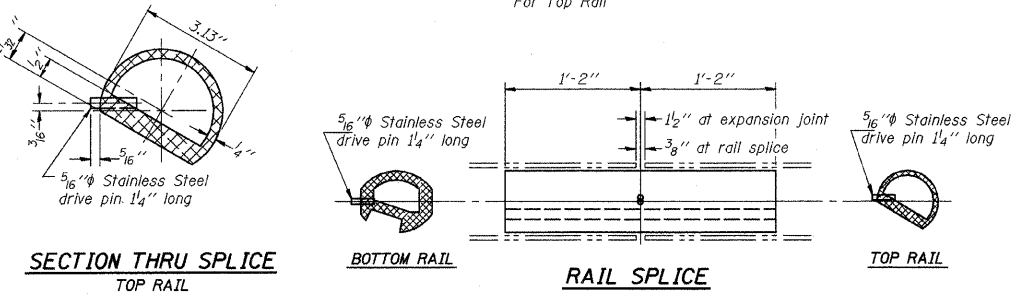
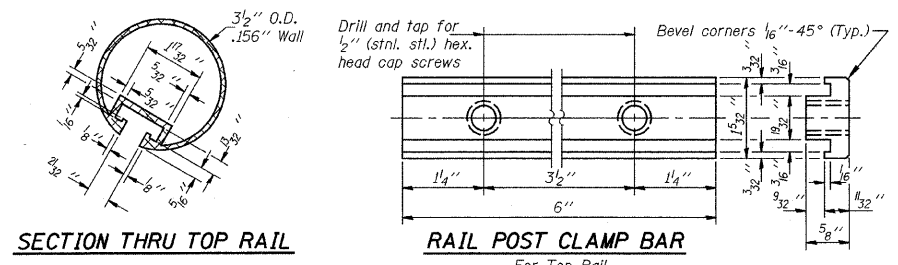


NOTES FOR TYPE L ALUMINUM RAILING

- ALL ALUMINUM ALLOY EXTRUDED RAIL SHALL BE SUPPLIED IN MODULAR LENGTHS OF 30 FEET, EXCEPT AT THE END OF BRIDGE OR OVER OPEN JOINTS IN BRIDGE DECK WHERE THE RAIL SHALL BE ATTACHED TO A MINIMUM OF 2 POSTS.
- ALL JOINTS IN RAIL SHALL BE SPLICED PER DETAIL. PROVIDE 1- 1/8" AND 2- 1/16" ALUMINUM SHIMS FOR 25% OF THE POSTS.
- RAIL ELEMENTS SHALL BE PARALLEL TO THE FINISHED TOP OF WALL. HIGH SPOTS SHALL BE GROUND DOWN AND LOW SPOTS SHALL BE SHIMMED AS REQUIRED.
- RAILING SHALL BE IN ACCORDANCE WITH SECTION 509 OF THE ILLINOIS ROAD AND BRIDGE STANDARD SPECIFICATIONS, EXCEPT AS NOTED, AND WILL BE PAID FOR AT THE CONTRACT UNIT PRICE PER LINEAL FOOT FOR ALUMINUM RAILING, TYPE L.
- ALUMINUM ALLOY RAIL SHALL CONFORM TO ASTM B221 ALLOY 6061-T6 OR 6351-T5 WITH MIN. YIELD 35 KSI, MIN. TENSILE 38 KSI, AND ELONGATION OF 10% IN 2 INCHES.
- SEE SHT. S4 FOR SOUTH RAMP BILL OF MATERIALS.



12/19/2008 3:34:33 PM N:\DGN\WF\451\SHEETS\STRUCTURAL\WF451-S16-DETAILS.DGN

This drawing shall not be used nor reproduced either wholly or in part except when authorized by the engineer- Rempe-Sharpe

ACTION	NAME	No.	Date	Revisions	By
Design	J.B.				
Drawn	D.B.E.				
Checked	S.S.				

REMPE-SHARPE
 CONSULTING ENGINEERS
 IL P.D.F. LICENSE NO. 184-000895
 324 WEST STATE STREET - GENEVA, ILLINOIS 60134
 Telephone (630) 232-0827 - Fax (630) 232-1629

PROJECT
PEDESTRIAN UNDERPASS AT METRA STATION WINFIELD, ILLINOIS

SHEET TITLE
STRUCTURAL DETAILS

SCALE	PROJECT NO.	SHEET
NOTED	WF-451	No. S16
	DATE	Of S16
	DEC. 19, 2008	