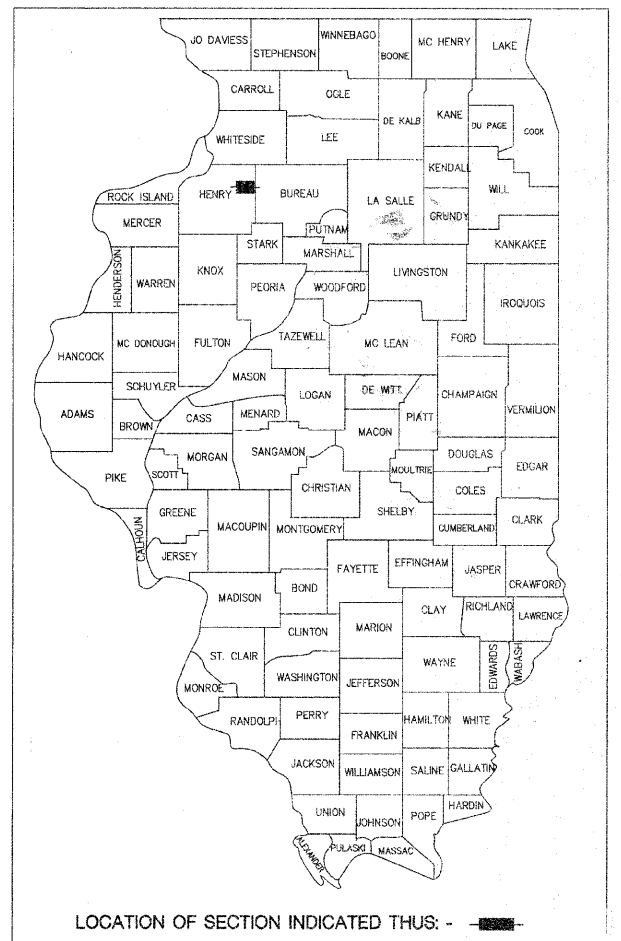


LOCAL RTE.	SECTION	COUNTY	TOTAL SHEETS	SHEET NO.
MS 1040	05-00010-00-PV	HENRY	136	1

STATE OF ILLINOIS DEPARTMENT OF TRANSPORTATION DIVISION OF HIGHWAYS

PROPOSED HIGHWAY PLANS

LOCAL ROUTE M.S. 1040 (LATHROP STREET)
SECTION 05-00010-00-PV
PROJECT NO. HD-HPP- 3644(001)
JOB NO. C-92-054-06
VILLAGE OF ANNAWAN
HENRY COUNTY

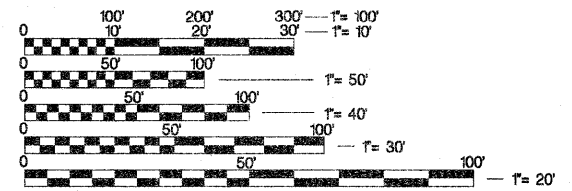
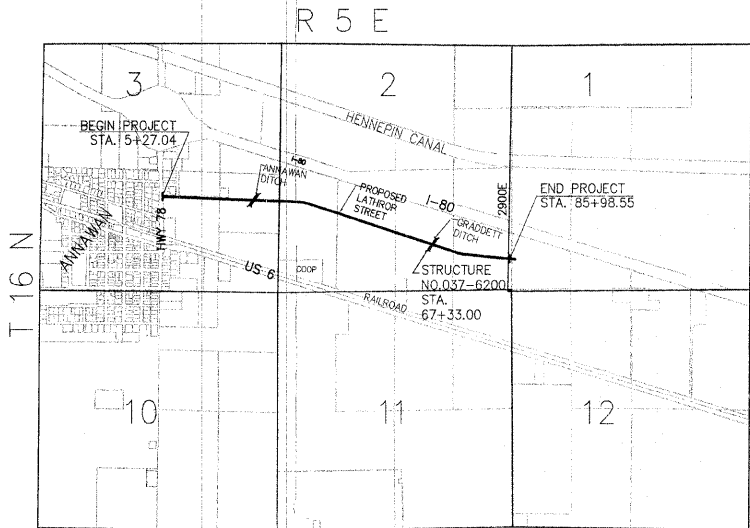


INDEX OF SHEETS

1	COVER SHEET
2	GENERAL NOTES
3-4	SUMMARY OF QUANTITIES
5-8	SCHEDULE OF QUANTITIES
9-11	TYPICAL SECTIONS
12-17	DEMOLITION SHEETS
18-23	PLAN AND PROFILE SHEETS
24-32	SUGGESTED STAGES OF CONSTRUCTION AND TRAFFIC CONTROL
33-38	EROSION AND SEDIMENT CONTROL SHEETS
39-44	DRAINAGE SHEETS - STORM SEWER, CULVERTS
45-50	UTILITY SHEETS - SANITARY SEWER, WATER MAIN
51-53	INTERSECTION DETAILS
54-58	PAVEMENT JOINTING SHEETS
59-61	PAVEMENT MARKING DETAILS
62-66	SOIL BORING SHEETS
67-68	STRUCTURE SHEETS
69-72	DETAIL SHEET
73-122	CROSS SECTIONS
DISTRICT 2	STANDARD DRAWINGS
123	4.1 PC CONCRETE ISLANDS AND MEDIANS ACCESSIBLE TO THE DISABLED
124	25.1 ENTRANCE APPROACHES - URBAN AREA
125	32.1 SEWER AND WATER MAIN CROSSINGS
126	40.1A TRAFFIC CONTROL FOR ROAD CLOSURE WITH SIDE ROAD WITHIN 160'
127-129	41.1 TYPICAL PAVEMENT MARKINGS
130	10.2 INLET SPECIAL
131	13.2 FRAME AND GRATE FOR INLET SPECIAL
	29.2 EROSION CONTROL DETAILS FOR SILT FENCE
132	60.2 DISABLED RAMP DETAIL
133	90.2 MECHANICAL JOINTS FOR CONCRETE PIPE AND BOX CULVERTS
	92.2 THREE CENTER CURVE DATA
134	94.2 TRAFFIC CONTROL AND PROTECTION AT TURN BAYS (TO REMAIN OPEN TO TRAFFIC)
135	21.4 AGGREGATE DITCH FOR FLEXIBLE DITCH LINING
	28.4 SLOPE WALL FOR FIELD TILE OUTLET
	50.4 TYPICAL BENCHING ON EXISTING EMBANKMENT
136	79.4 INLET SPECIAL NO. 3
	79.4D NOSE TYPE FOR INLET TOP SLAB
	79.4E INLET SPECIAL NO. 3, 4, 5, 6 REINFORCEMENT DETAIL
	88.4 DRAIN FOR AGGREGATE BASES IN URBAN AREAS

LIST OF STATE STANDARDS

001001-02	AREAS OF REINFORCEMENT BARS
280001-04	TEMPORARY EROSION CONTROL SYSTEMS
353001-04	PCC BASE COURSE WITH HMA BINDER AND SURFACE COURSE
420001-07	PAVEMENT JOINTS
420101-04	24' (7.2 m) JOINTED PCC PAVEMENT
424001-05	CURB RAMPS FOR SIDEWALKS
542301-02	PRECAST REINFORCED CONCRETE FLARED END SECTION
542401-01	METAL END SECTION FOR PIPE CULVERTS
601101-01	CONCRETE HEADWALL FOR PIPE DRAIN
602401-02	MANHOLE TYPE A
602601-02	PRECAST REINFORCED CONCRETE FLAT SLAB TOP
606001-04	CONCRETE CURB TYPE B AND COMBINATION CONCRETE CURB AND GUTTER
606301-04	PC CONCRETE ISLANDS AND MEDIANS
630001-08	STEEL PLATE BEAM GUARDRAIL
630301-05	SHOULDER WIDENING FOR TYPE 1 (SPECIAL) GUARDRAIL TERMINALS
701001-02	OFF-ROAD OPERATIONS, 2L, 2W, MORE THAN 4.5M (15') AWAY
701301-03	LANE CLOSURE, 2L, 2W SHORT TIME OPERATIONS
701501-05	URBAN LANE CLOSURE, 2L, 2W, UNDIVIDED
701502-03	URBAN LANE CLOSURE, 2L, 2W, WITH BIDIRECTIONAL LEFT TURN LANE
701606-06	URBAN LANE CLOSURE, MULTILANE, 2W WITH MOUNTABLE MEDIAN
701701-06	URBAN LANE CLOSURE, MULTILANE INTERSECTION
701901-01	TRAFFIC CONTROL DEVICES
720001-01	SIGN PANEL MOUNTING DETAILS
720006-02	SIGN PANEL ERECTION DETAILS
720011-01	METAL POSTS FOR SIGNS, MARKERS & DELINEATORS
728001-01	TELESCOPING STEEL SIGN SUPPORT
729001-01	APPLICATIONS OF TYPES A & B METAL POSTS (FOR SIGNS & MARKERS)
780001-02	TYPICAL PAVEMENT MARKINGS
B.L.R. 21-8	TYPICAL APPLICATION OF TRAFFIC CONTROL DEVICES FOR CONSTRUCTION ON RURAL LOCAL HIGHWAYS



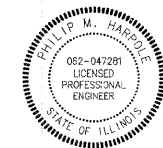
FULL SIZE PLANS HAVE BEEN PREPARED USING STANDARD ENGINEERING SCALES. REDUCED SIZED PLANS WILL NOT CONFORM TO STANDARD SCALES. IN MAKING MEASUREMENTS ON REDUCED PLANS, THE ABOVE SCALES MAY BE USED.

JULIE
JOINT UTILITY LOCATION INFORMATION FOR EXCAVATION
1-800-892-0123

CONTRACT NO. 85428

2007 ADT = 100
2017 ADT = 5250 (ESTIMATED)
2028 ADT = 5400 (ESTIMATED)
S.U. = 10% M.U. = 5%
LOCAL ROAD
45 MPH DESIGN SPEED

PROJECT LENGTH
GROSS LENGTH 8071.51' 1.529 MI
NET LENGTH



Signature *Phillip M. Harpole*
Date 3/11/2009
Exp. Date 11/30/2009

AGENCY RESPONSIBLE FOR LETTING	
APPROVED <i>Kenneth Frank Jr.</i> 3-11-09	20 09
VILLAGE OF ANNAWAN, VILLAGE PRESIDENT	
PASSED <i>Don L. Johnson</i>	MARCH 13 20 09
DISTRICT TWO ENGINEER OF LOCAL ROADS & STREETS	
RELEASING FOR BID BASED ON LIMITED REVIEW	MARCH 13 20 09
DEPUTY DIRECTOR OF HIGHWAYS, REGION TWO ENGINEER	