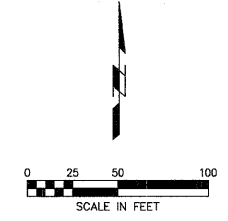


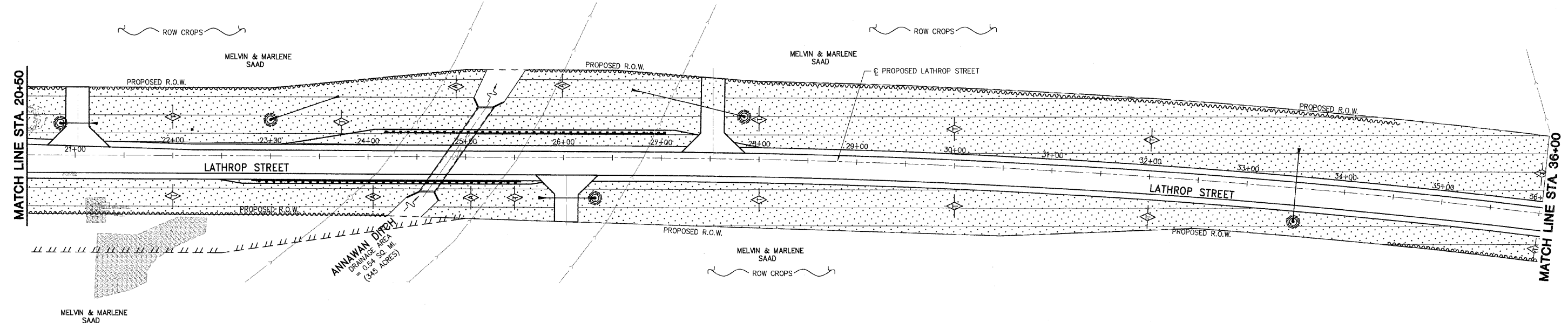
CONTRACT NO. 85428				
LOCAL RTE.	SECTION	COUNTY	TOTAL SHEETS	SHEET NO.
M.S. 1040	05-00010-00-PV	HENRY	136	34
STA. 20+50		TO STA. 36+00		
FED. ROAD DIST. NO.2		ILLINOIS FED. AID PROJECT		

**SHIVE HATTERY**  
 Cedar Rapids, IA • Iowa City, IA • Des Moines, IA  
 Moline, IL • Bloomington, IL • Chicago, IL  
 SHIVE-HATTERY, INC. 1701 RIVER DRIVE, SUITE 200 MOLINE, IL 61265  
 PHONE (309) 764-7650 FAX (309) 764-8616  
 http://www.shive-hattery.com  
 ILLINOIS FIRM NUMBER: 184-000214



PLAN	REVIEWED	DATE
	BY	
	DATE	
	BY	
	DATE	
	BY	
	DATE	
	BY	
	DATE	

PROFILE	REVIEWED	DATE
	BY	
	DATE	
	BY	
	DATE	
	BY	
	DATE	
	BY	
	DATE	

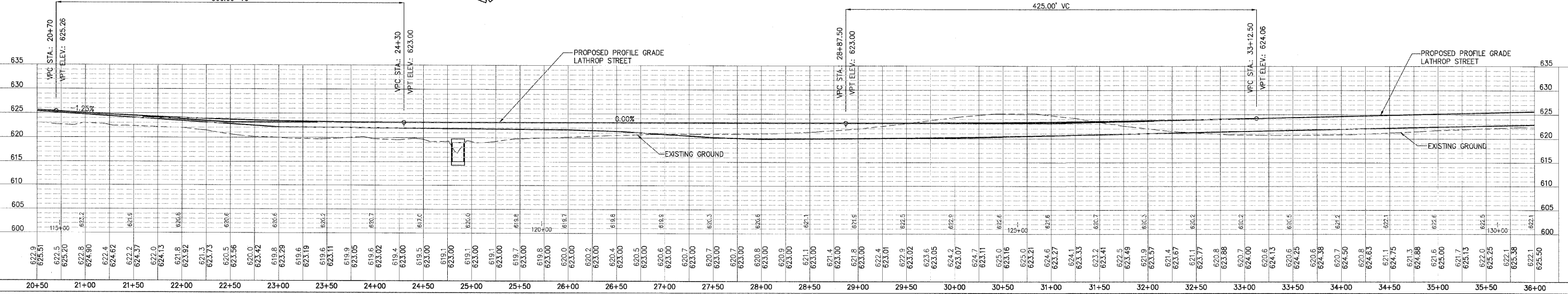


- LEGEND**
- SEEDING CLASS 4A
  - AGGREGATE DITCH CHECK
  - TEMPORARY DITCH CHECK
  - SILT FENCE
  - INLET AND PIPE PROTECTION



LOW POINT ELEV = 623.00  
 LOW POINT STA = 24+30  
 PVI STA = 22+50  
 PVI ELEV = 623.00  
 A.D. = 1.25%  
 K = 286.86  
 360.00' VC

LOW POINT ELEV = 623.00  
 LOW POINT STA = 28+87.50  
 PVI STA = 31+00  
 PVI ELEV = 623.00  
 A.D. = 0.50  
 K = 850.00  
 425.00' VC



PLOT DATE = 8/20/14  
 FILE NAME = 85428.PLT  
 PLOT SCALE = 1/4"=1'-0"  
 USER NAME = JUSER