

| | | | |
|-------------------------------|---------------------------|---------------------------------------|---------------------|
| LOCAL RTE. 1040 | SECTION 05-00010-00-PV | COUNTY HENRY | TOTAL SHEETS 136 |
| STA. FED. ROAD DIST. NO. 2 | | TO STA. ILLINOIS FED. ROAD PROJECT | 72 |

GENERAL NOTES:

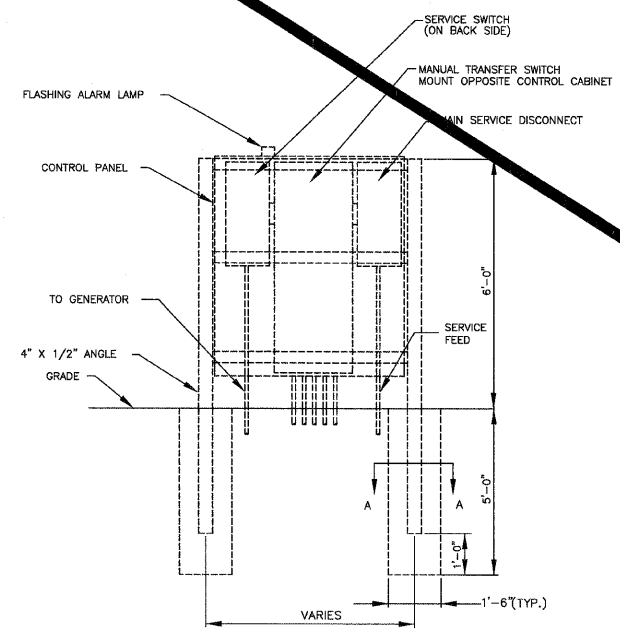
- DRAWINGS ARE DIAGRAMMATIC. ALL DIMENSIONS SHOWN ARE APPROXIMATE. ALL LOCATIONS SHALL BE FIELD VERIFIED.
- ALL WORK SHALL BE IN CONFORMANCE WITH THE NATIONAL ELECTRICAL CODE - LATEST EDITION ADOPTED BY ILLINOIS, THE ILLINOIS AMENDMENTS, LOCAL/MUNICIPAL CODES, AND THE AUTHORITY HAVING JURISDICTION.
- IT IS THE INTENT OF THESE DOCUMENTS TO COMPLY WITH THE APPLICABLE CODES. WHERE DISCREPANCIES OCCUR, NOTIFY THE ENGINEER/ARCHITECT IN WRITING FOR INTERPRETATION. CORRECT ANY INSTALLATION THAT FAILS TO COMPLY WITH THE CODES AND STANDARDS AT NO ADDITIONAL COST TO THE OWNER.
- CONTRACTOR SHALL PROVIDE ALL WORK NECESSARY INCLUDING ALL LABOR, MATERIALS, PERMITS, TAXES, FEES, INSPECTIONS, HARDWARE, AND COST FOR INSTALLATION FOR A COMPLETE AND OPERATIONAL SYSTEM. ALL WORK SHALL BE IN COMPLIANCE WITH LOCAL CODES, ORDINANCES, RULES, AND PUBLIC AUTHORITIES WHICH HAVE JURISDICTION OF THE PERFORMANCE OF THIS WORK.
- COORDINATE ELECTRICAL INSTALLATION WITH ALL TRADES PRIOR TO INSTALLATION. IF ELECTRICAL WORK INSTALLED INTERFERES WITH OTHER TRADES AFTER INSTALLATION, THE CONTRACTOR SHALL MAKE ALL NECESSARY CHANGES TO CORRECT THE CONDITION AT NO ADDITIONAL COST TO THE OWNER.
- FURNISH AND INSTALL METERING PER THE LOCAL UTILITY REQUIREMENTS. CONTRACTOR SHALL INCLUDE IN THEIR BID, ALL CONTRACTOR COST ASSOCIATED WITH PROVIDING UTILITY SERVICE. PROVIDE A COMPLETE AND OPERATIONAL SYSTEM. UTILITY SHALL BILL OWNER DIRECTLY FOR THEIR COST.
- ALL CONNECTIONS TO EQUIPMENT SUBJECT TO MOVEMENT OR VIBRATION SHALL BE LIQUID TIGHT FLEXIBLE METAL CONDUIT, NOT LESS THAN 12" IN LENGTH, NOR GREATER THAN 36" IN LENGTH.
- ALL CONDUIT PENETRATIONS SHALL BE SEALED WITH APPROPRIATE CONDUIT SEALING MATERIAL.
- ALL CABLE SHALL UTILIZE COPPER CONDUCTORS.
- PROVIDE ALL FUSES. PROVIDE A TYPED LABEL INSIDE FUSED DISCONNECTS PROVIDING ALL REPLACEMENT FUSE INFORMATION.
- THESE DRAWINGS SHALL NOT BE SCALED TO OBTAIN DIMENSIONS. IF THE DIMENSIONS CANNOT BE DETERMINED BY THE INFORMATION GIVEN, CONTRACTOR SHALL CONTACT THE ENGINEER FOR REQUIRED INFORMATION.
- PERIODIC SITE OBSERVATION BY THE ENGINEER IS SOLELY FOR THE PURPOSE OF DETERMINING IF THE WORK OF THE CONTRACTOR IS PROCEEDING IN ACCORDANCE WITH THE ELECTRICAL CONTRACT DOCUMENTS. THIS LIMITED SITE OBSERVATION SHOULD NOT BE CONSTRUED AS EXHAUSTIVE OR CONTINUOUS TO CHECK THE QUALITY OR QUANTITY OF THE WORK, BUT RATHER PERIODIC IN AN EFFORT TO GUARD THE OWNER AGAINST DEFECTS OR DEFICIENCIES IN THE WORK OF THE CONTRACTOR.
- THE INFORMATION CONTAINED ON THE ELECTRICAL DRAWINGS IS IN ITSELF INCOMPLETE AND VOID UNLESS USED IN CONJUNCTION WITH ALL OTHER DISCIPLINE DRAWINGS, THE SPECIFICATIONS, TRADE PRACTICES, OR APPLICABLE STANDARDS, CODES, ETC., AND SHALL BE CONSIDERED THE CONTRACT DOCUMENTS AND WITH ALL THE IN BY REFERENCE, WHICH THE CONTRACTOR CERTIFIES KNOWLEDGE OF BY SIGNING THE CONTRACT.
- CONTRACTOR IS TO ASSUME FULL RESPONSIBILITY, UNRELIEVED BY REVIEW OF SHOP DRAWINGS OR PERIODIC OBSERVATION OF CONSTRUCTION, FOR COMPLIANCE WITH THE CONTRACT DOCUMENTS, FOR DIMENSIONS TO BE CONFIRMED AND CORRELATED AT THE JOB SITE AND BETWEEN INDIVIDUAL DRAWINGS OR SETS OF DRAWINGS FOR FABRICATION PROCESSES AND CONSTRUCTION TECHNIQUES (INCLUDING EXCAVATION, SHORING, SCAFFOLDING, BRACING, ERECTION, FORM WORK, ETC.), FOR COORDINATION OF THE VARIOUS TRADES, AND FOR SAFE CONDITIONS ON THE JOB SITE. VARIATIONS IN FIELD CONDITIONS RELATIVE TO THE CONTRACT DOCUMENTS SHALL BE REPORTED TO THE ENGINEER AS SOON AS THEY ARE FOUND. WORK SHALL NOT PROGRESS UNTIL WRITTEN PERMISSION FROM THE ENGINEER IS OBTAINED.

CODED NOTES:

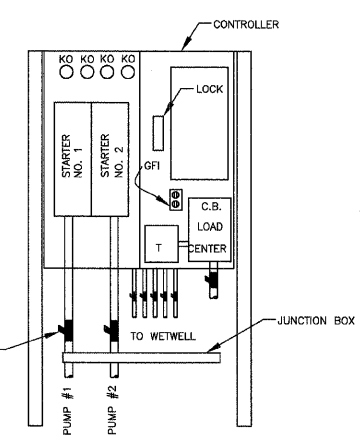
- COORDINATE WITH THE LOCAL UTILITY FOR ELECTRICAL SERVICE. PROVIDE ALL CONDUIT, WIRE, DEVICES, AND CONNECTIONS REQUIRED FOR A FULLY FUNCTIONING ELECTRICAL SERVICE.
- MAKE FINAL ELECTRICAL POWER AND CONTROL CONNECTIONS TO NEW 10 HP. PUMP.
- PROVIDE ACROSS THE LINE STARTER WITH SOLID STATE OVERLOADS FOR 10 HP. PUMPS.
- INTERFACE EQUIPMENT FOR SENSORS TO BE FURNISHED BY OTHERS. PROVIDE CONTROL CONNECTIONS AS RECOMMENDED BY THE SUPPLIER.

SHIVE-HATTERY
 Cedar Rapids, IA • Iowa City, IA • Des Moines, IA
 Moline, IL • Bloomington, IL • Chicago, IL
 SHIVE-HATTERY, INC. 1701 RIVER DRIVE, SUITE 200 MOLINE, IL 61265
 PHONE (309) 764-7650 FAX (309) 764-8616
 http://www.shive-hattery.com
 ILLINOIS FIRM NUMBER: 184-000214

| | |
|-----------|-----------|
| DATE | BY |
| | |
| | |
| | |
| PLAN NO. | NO. |
| SURVEYED | ALIGNED |
| NOTE BOOK | FILE NAME |



NORTH



SOUTH

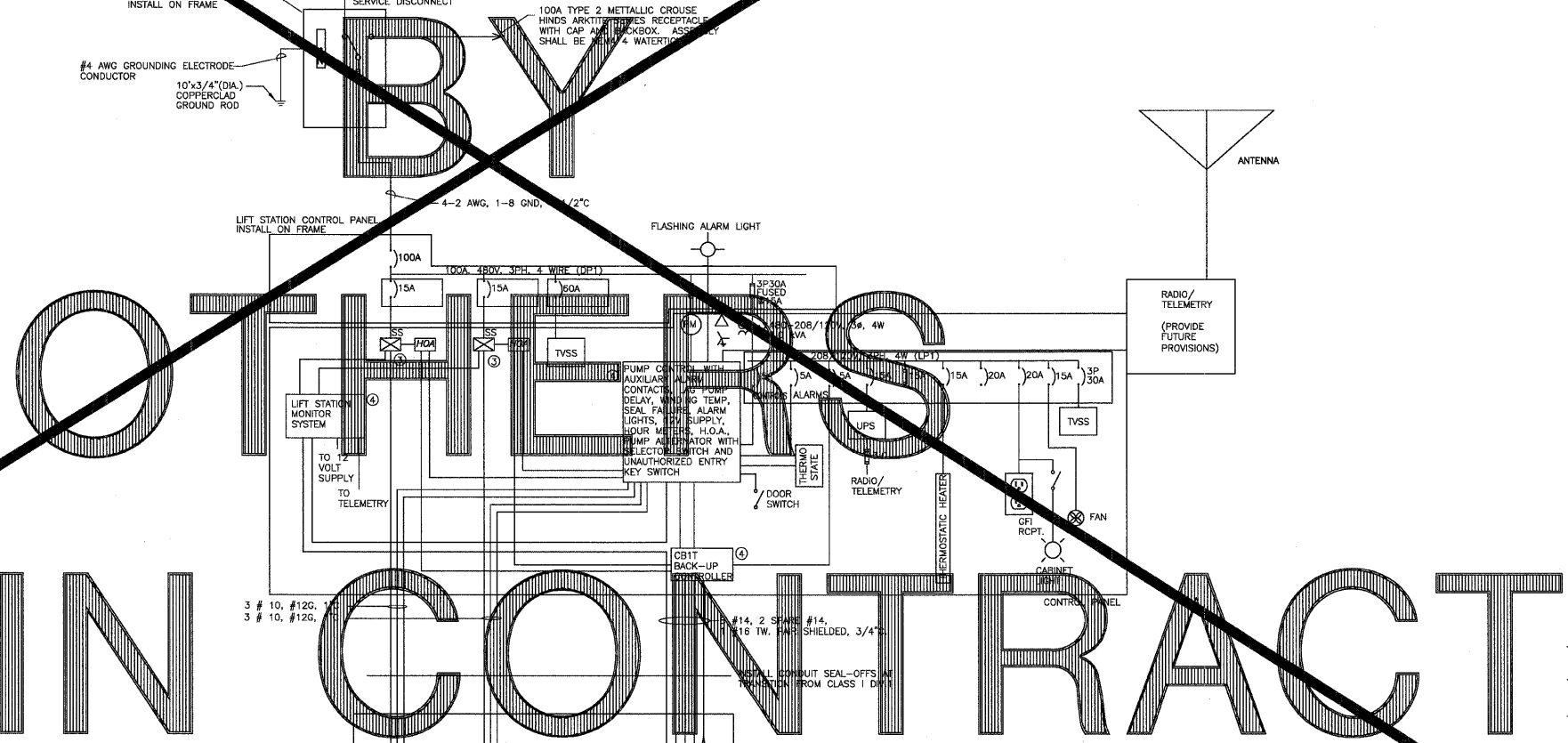
SECTION A-A

- NOTES:**
- COORDINATE EXACT MOUNTING CONFIGURATION, FRAME HEIGHT AND WIDTH WITH COMPONENT SHOP DRAWINGS. PROVIDE SHOP DRAWINGS FOR APPROVAL OF FINAL ARRANGEMENT BY THE ENGINEER.
 - FASTENING HARDWARE SHALL BE 304 STAINLESS STEEL BOLTS AND STEEL ANGLE IRON AS REQUIRED. ALL IRON SHALL BE PRIMED, AND PAINTED WITH GRAY ZINC CHROMATE RUST-RESISTING PAINT.

CONTROL PANEL NORTH & SOUTH ELEVATIONS

SCALE: 1/8" = 1'-0"

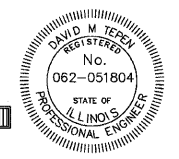
1
E1-01



ONE LINE DIAGRAM

SCALE: NOT TO SCALE

2
E1-01



SIGNATURE
 11/30/2009
 EXPIRATION DATE
 DATE

| REVISIONS | NAME | DATE |
|-----------|------|------|
| | | |
| | | |
| | | |
| | | |

ILLINOIS DEPARTMENT OF TRANSPORTATION
 DETAIL SHEET

SCALE: VERT.
 HORIZ.
 DATE: 03-11-09

DRAWN BY: MAC
 CHECKED BY: DMH