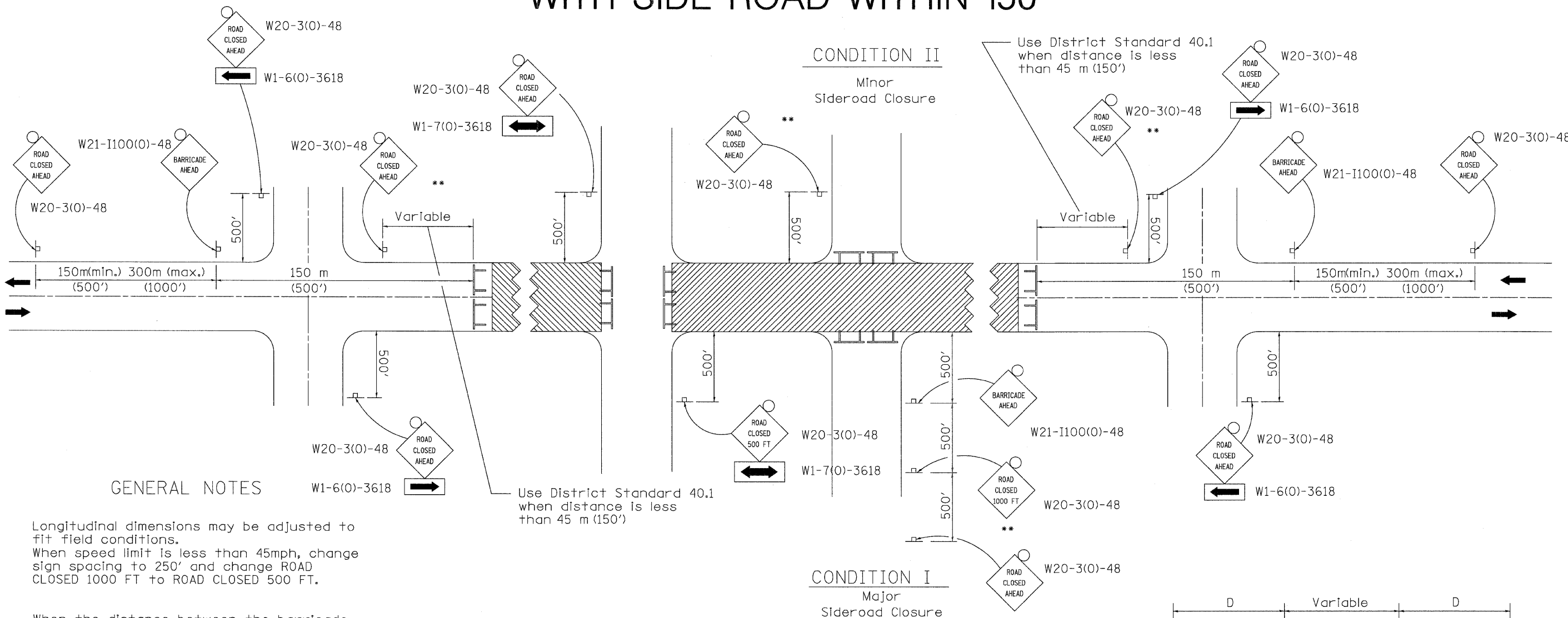


TRAFFIC CONTROL FOR ROAD CLOSURE WITH SIDE ROAD WITHIN 150'



GENERAL NOTES

Longitudinal dimensions may be adjusted to fit field conditions.
When speed limit is less than 45mph, change sign spacing to 250' and change ROAD CLOSED 1000 FT to ROAD CLOSED 500 FT.

When the distance between the barricade and the intersection is between 450 m (1500') and 600 m (2000'), the advance sign shall be placed at the intersection. When the distance between the barricade and the intersection is over 600 m (2000'), an additional sign shall be placed at the intersection. The additional sign shall give the distance to the barricade in miles or fractions of a mile.
Side roads requiring all three signs as shown in CONDITION I (Major Sideroad Closure), shall be listed in the special provision.

** Where local access is to be maintained, barricades are to be set up as shown above in Road Closed to thru traffic.

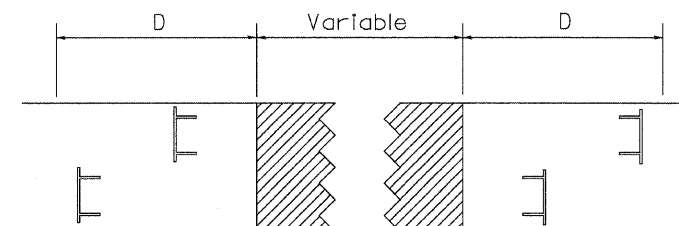
Type III Barricades and R11-2-4830 signs shall be as shown in "Road Closed To All Traffic" detail on Highway Standard 701901.

Use District Standard 40.1 when distance is less than 45 m (150')

SYMBOLS

- Work area
- Type III Barricade with Flashers
- Sign with flashing light

All dimensions are in millimeters (inches) unless otherwise shown.



Type III Barricades and R11-4-4830 signs shall be as shown in "Road Closed To All Thru Traffic" detail on Highway Standard 701901. If the distance "D" exceeds 600 m (2000') an additional set of barricades and R11-4-4830 shall be placed at each end of the work area.

TYPICAL APPLICATION
FOR ROAD CLOSURE
WITH SIDE ROAD WITHIN
150' OF CLOSURE

FILE NAME =	USER NAME = *USER*	DESIGNED - ---	REVISED - 1-11-08	STATE OF ILLINOIS DEPARTMENT OF TRANSPORTATION	REGION 2 / DISTRICT 2 STANDARD	LOCAL RTE. M.S. 1940	SECTION 05-00010-00-PV	COUNTY HENRY	TOTAL SHEETS 136	SHEET NO. 126
*FILE#	PLOT SCALE = *SCALE*	DRAWN - ---	REVISED - ---	SCALE: _____ SHEET NO. 126 OF 136 SHEETS STA. _____ TO STA. _____		FED. ROAD DIST. NO. ILLINOIS FED. AID PROJECT		CONTRACT NO. 85428		