

C.H.	SECTION	COUNTY	TOTAL SHEETS	SHEET NO.
23	06-00414-00 BR	WINNEBAGO	10	1
STA. 14+30		TO STA. 16+67		
FED. ROAD DIST. NO.		ILLINOIS	FED. AID PROJECT	

INDEX OF SHEETS

SHEET NO.	DESCRIPTION
1	TITLE SHEET
2	GENERAL NOTES, SUMMARY OF QUANTITIES, EARTHWORK SCHEDULE AND ALIGNMENT & TIES
3	TYPICAL SECTIONS
4	DETOUR PLAN
5	PLAN AND PROFILE
6	GENERAL PLAN AND ELEVATION
7	FOOTING PLAN AND DETAILS
8-10	CROSS SECTIONS

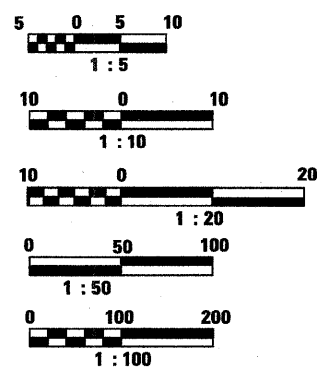
LIST OF STANDARDS

000001-05	STANDARD SYMBOLS, ABBREVIATIONS AND PATTERNS
280001-04	TEMPORARY EROSION CONTROL SYSTEMS
630001-08	STEEL PLATE BEAM GUARDRAIL
630101-08	GUARDRAIL MOUNTED ON EXISTING CULVERTS
630301-05	SHOULDER WIDENING FOR TYPE 1 (SPECIAL) GUARDRAIL TERMINALS
635006-03	REFLECTOR AND TERMINAL MARKER PLACEMENT
701006-03	OFF-ROAD OPERATIONS
701201-03	LANE CLOSURE, 2 LANE, 2 WAY: DAY ONLY, FOR SPEEDS ≥ 45 MPH
701301-03	LANE CLOSURE, 2 LANE, 2 WAY: SHORT TIME OPERATIONS
701306-02	LANE CLOSURE, 2 LANE, 2 WAY: SLOW MOVING OPERATIONS DAY ONLY FOR SPEEDS ≥ 45 MPH
701311-03	LANE CLOSURE, 2 LANE, 2 WAY: MOVING OPERATIONS- DAY ONLY
701901-01	TRAFFIC CONTROL DEVICES
720011-01	METAL POSTS FOR SIGNS, MARKERS AND DELINEATORS
728001-01	TELESCOPING STEEL SIGN SUPPORT
729001-01	APPLICATIONS OF TYPES A & B METAL POSTS (FOR SIGNS AND MARKERS)
780001-02	TYPICAL PAVEMENT MARKINGS
BLR 21-8	TYPICAL APPLICATION OF TRAFFIC CONTROL DEVICES FOR CONSTRUCTION ON RURAL LOCAL HIGHWAYS
BLR 22-6	TYPICAL APPLICATION OF TRAFFIC CONTROL DEVICES FOR CONSTRUCTION ON LOCAL HIGHWAYS (TWO LANE, TWO WAY RURAL TRAFFIC) (ROAD CLOSED TO THRU TRAFFIC)

TRAFFIC DATA

3R GUIDELINES
 HIGHWAY CLASSIFICATION: RURAL COLLECTOR
 ADT: 350 (2008) 1% TRUCKS
 DESIGN SPEED: 40 mph
 CLOSED ROAD ADT: 20

ENGLISH RATIOS



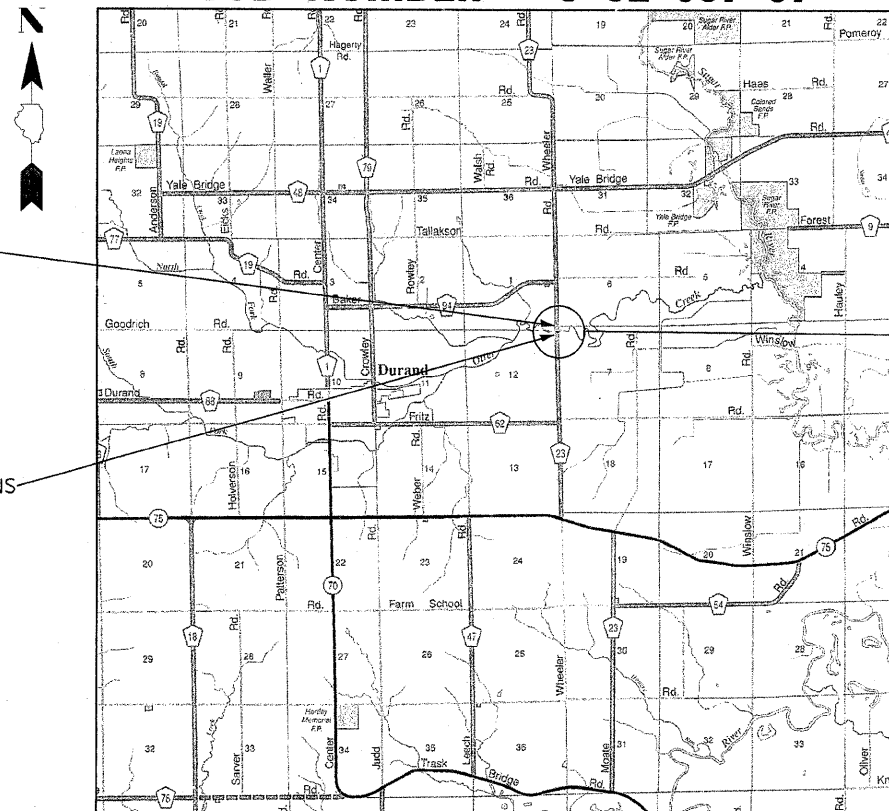
FULL SIZE PLANS HAVE BEEN PREPARED USING STANDARD ENGINEERING SCALES, REDUCED SIZED PLANS WILL NOT CONFORM TO STANDARD SCALES, IN MAKING MEASUREMENTS ON REDUCED PLANS, THE ABOVE SCALES MAY BE USED.

J.U.L.I.E.
 JOINT UTILITY LOCATION INFORMATION FOR EXCAVATION
 1-800-892-0123

STATE OF ILLINOIS
 DEPARTMENT OF TRANSPORTATION
 DIVISION OF HIGHWAYS

**PLANS FOR PROPOSED
 BRIDGE REHABILITATION PROJECT
 (CH 23) WHEELER ROAD
 OVER OTTER CREEK**

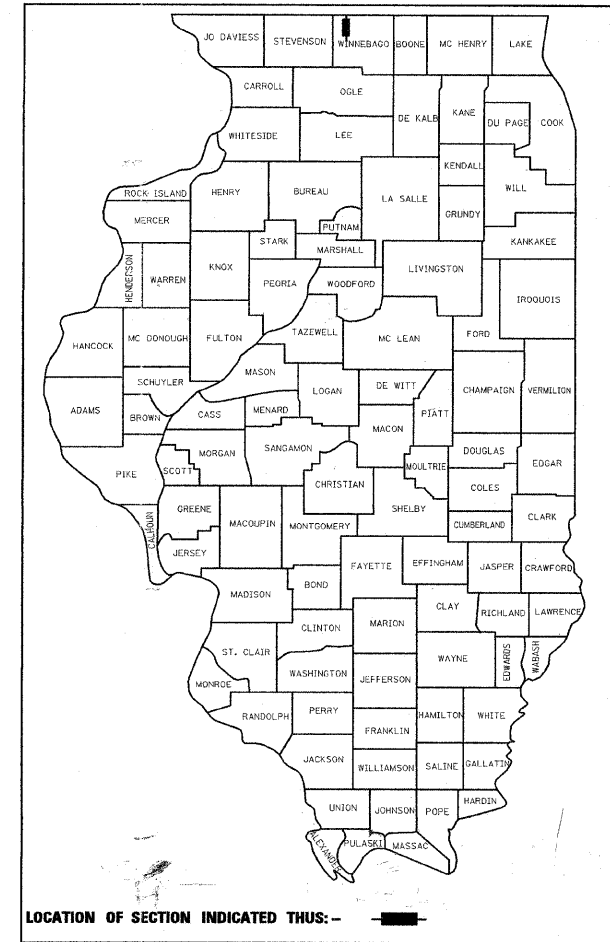
STRUCTURE NO. SN 101-3097
 WINNEBAGO COUNTY
 SECTION NO. 06-00414-00-BR
 PROJECT BROS-201(23)
 JOB NUMBER - C-92-067-07



IMPROVEMENT ENDS
 STATION 16+67

IMPROVEMENT BEGINS
 STATION 14+30

PROPOSED IMPROVEMENT
 3 SIDED CONCRETE
 STRUCTURE
 PRECAST CONCRETE
 WING WALLS
 PRECAST CONCRETE
 SUBSTRUCTURE



LOCATION OF SECTION INDICATED THUS: -

STATE OF ILLINOIS
 DEPARTMENT OF TRANSPORTATION
 DIVISION OF HIGHWAYS

Approved April 11, 2008
 [Signature]
 Local Agency, Position

Passed April 22, 2008
 [Signature]

Releasing for Bid
 Based on Limited
 Review April 22, 2008
 [Signature]
 Deputy Director of Highways, Regional Engineer

**PRINTED BY THE AUTHORITY
 OF THE STATE OF ILLINOIS**

DICK M. TERBERG
 PROFESSIONAL ENGINEER
 062-059236/4-10-08
 ROCKFORD, ILLINOIS
 EXP. 11/30/09

HOMER L.
CHASTAIN & ASSOCIATES
 CONSULTING ENGINEERS

PHONE: 815-489-0050
 FAX: 815-489-0055
 LICENSE NO. 184.001397

WHEELER ROAD NET PROJECT LENGTH 237 FEET (0.045 Mi.)
 WHEELER ROAD GROSS PROJECT LENGTH 237 FEET (0.045 Mi.)

CONTRACT NO. 85433