

GENERAL NOTES

- THE CONTRACTOR SHALL SEED ALL DISTURBED AREAS WITHIN THE PROJECT LIMITS. SEEDING CLASS 2A SHALL BE USED.
- FERTILIZER NUTRIENTS SHALL BE APPLIED AT THE RATE SPECIFIED IN SECTIONS 250 OF THE STANDARD SPECIFICATIONS. THIS SHALL BE INCLUDED IN THE COST OF THE SEEDING.
- REMOVAL OF EXISTING SEAL COAT ROADWAY WILL NOT BE PAID FOR SEPARATELY, BUT SHALL BE PAID FOR AS EARTH EXCAVATION.
- STRUCTURE EXCAVATION WILL BE PERFORMED AS REQUIRED TO THE LINES AND GRADES SHOWN IN THE PLANS. THIS WORK WILL NOT BE PAID FOR SEPARATELY, BUT SHALL BE INCLUDED IN THE UNIT PRICE BID FOR THE STRUCTURE PER ARTICLE 502.13 OF THE STANDARD SPECIFICATIONS.
- ALL EMBANKMENT CONSTRUCTED OF COHESIVE SOIL SHALL BE CONSTRUCTED WITH NOT MORE THAN 110% OF OPTIMUM MOISTURE CONTENT, DETERMINED BY THE STANDARD PROCTOR TEST. COHESIVE SOIL SHALL BE DEFINED AS ANY SOIL WHICH CONTAINS GREATER THAN 10% PARTICLES BY WEIGHT PASSING THE #200 SIEVE. THE 110% OF OPTIMUM MOISTURE LIMIT MAY BE WAIVED OF FREE-DRAINING GRANULAR MATERIAL, WHEN APPROVED BY THE ENGINEER.
- THE NEW NUMBERS FOR THE CULVERT STRUCTURES ARE SN 101-3097 (EX SN 101-3010).
- STEEL PLATE BEAM GUARDRAIL, ATTACHED TO STRUCTURES SHALL BE MOUNTED PER STANDARD 630101-07, GUARDRAIL MOUNTED ON EXISTING CULVERTS.
- THE LOCATIONS OF THOSE BURIED AND ABOVEGROUND UTILITIES SHOWN ARE APPROXIMATE, ARE SHOWN FOR CONTRACTOR INFORMATIONAL USE ONLY, AND ARE NOT TO BE REFERENCED FOR CONSTRUCTION PURPOSES. THE IMPLIED PRESENCE OR ABSENCE OF UTILITIES IS NOT TO BE CONSTRUED BY THE OWNER, ENGINEER, CONTRACTOR, OR SUBCONTRACTORS TO BE AN ACCURATE REPRESENTATION OF UTILITIES THAT MAY OR MAY NOT EXIST ON THE CONSTRUCTION SITE. THE CONTRACTOR SHALL BE RESPONSIBLE FOR PROTECTING UTILITY PROPERTY DURING CONSTRUCTION OPERATIONS AS OUTLINED IN ARTICLE 107.31 OF THE STANDARD SPECIFICATIONS. THE CONTRACTOR SHALL NOTIFY JULIE A MINIMUM OF 48 HOURS BEFORE CONSTRUCTION IS TO BEGIN. THE JULIE NUMBER IS 800-892-0123. THE CONTRACTOR SHALL COORDINATE CONSTRUCTION ACTIVITIES WITH UTILITY COMPANIES.
- THE CONTRACTOR SHALL ONLY USE COUNTY ROUTES AND DETOUR ROUTES FOR HAULING MATERIALS AND EQUIPMENT. THERE WILL BE NO EXCEPTIONS UNLESS WRITTEN PERMISSION IS GIVEN FROM A JURISDICTION, TOWNSHIP OR COUNTY. A RECORD OF THIS AUTHORIZATION SHALL BE GIVEN TO THE RESIDENT ENGINEER.
- THE CONTRACTOR WILL NOT BE ALLOWED TO SET UP A YARD OR FIELD OFFICE ON COUNTY PROPERTY WITHOUT WRITTEN PERMISSION FROM THE DEPARTMENT.
- ALL DIMENSIONS SHOWN ARE IN FEET UNLESS OTHERWISE NOTED. PAVEMENT THICKNESS AND MARKING WIDTHS ARE SHOWN IN INCHES UNLESS NOTED.
- WHERE SECTION OR SUB-SECTION MONUMENTS ARE ENCOUNTERED, THE ENGINEER SHALL BE NOTIFIED BEFORE SUCH MONUMENTS ARE REMOVED. THE CONTRACTOR SHALL PROTECT AND CAREFULLY PRESERVE ALL MONUMENTS OR OTHERWISE REFERENCE THEIR LOCATION. THE CONTRACTOR WILL BE RESPONSIBLE FOR HAVING AN AUTHORIZED SURVEYOR RE-ESTABLISH ANY SECTION OR SUB-SECTION MONUMENTS DESTROYED BY HIS OPERATIONS.
- THE CONTRACTOR SHALL PROTECT ALL TREES FROM DAMAGE DUE TO HIS OPERATIONS. THIS WORK WILL NOT BE PAID SEPARATELY, BUT SHALL BE INCLUDED IN ALL UNIT PRICES BID.
- ALL SAW CUTTING OF EXISTING PAVEMENT SHALL BE CONSIDERED INCLUDED IN EARTH EXCAVATION. THE MINIMUM SAW CUT DEPTH IN THE PAVEMENT SHALL BE FULL DEPTH OF THE EXISTING PAVEMENT TO ASSURE A SMOOTH TRANSITION FROM EXISTING PAVEMENT TO PROPOSED PAVEMENT.
- THE FOLLOWING MIX REQUIREMENTS ARE APPLICABLE FOR THIS PROJECT:

SUMMARY OF QUANTITIES
CONSTRUCTION TYPE CODE: X028-2A

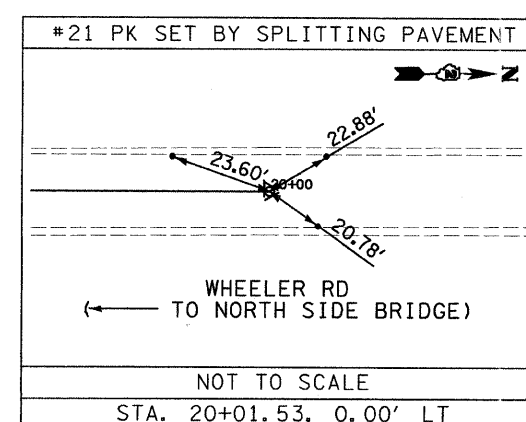
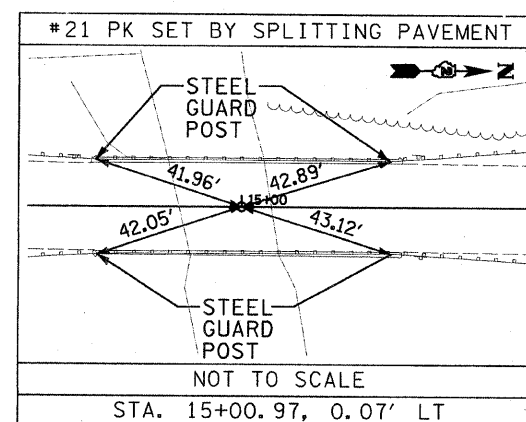
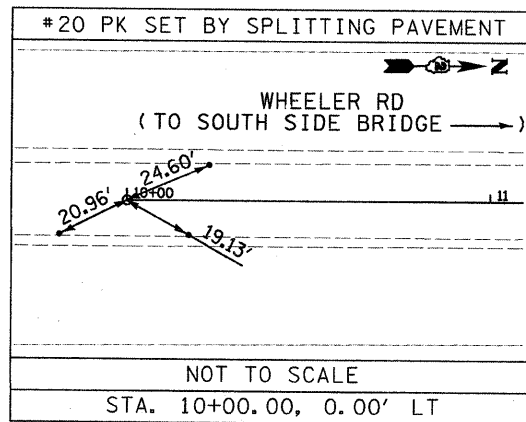
NUMBER	PAY ITEM DESCRIPTION	UNIT	QUANTITY
20200100	EARTH EXCAVATION	CU YD	257
21101615	TOPSOIL FURNISH AND PLACE, 4"	SQ YD	671
25000210	SEEDING, CLASS 2A	ACRE	0.2
25100630	EROSION CONTROL BLANKET	SQ YD	670
28000400	PERIMETER EROSION BARRIER	FOOT	764
35102000	AGGREGATE BASE COURSE, TYPE B 8"	SQ YD	615
40600100	BITUMINOUS PRIME COAT	GAL	542
40603060	HOT-MIX ASPHALT BINDER COURSE, IL-19.0, N50	TON	87
40603310	HOT-MIX ASPHALT SURFACE COURSE, MIX "C", N50	TON	54
48101200	AGGREGATE SHOULDERS, TYPE B	TON	33
50100100	REMOVAL OF EXISTING STRUCTURES	EACH	1
50300225	CONCRETE STRUCTURES	CU YD	74
50600205	REINFORCEMENT BARS, EPOXY COATED	POUND	3320
51201105	FURNISHING METAL SHELL PILES 14"	FOOT	1260
51202305	DRIVING PILES	FOOT	1260
51203200	TEST PILE METAL SHELLS	EACH	3
63000000	STEEL PLATE BEAM GUARD RAIL, TYPE A	FOOT	150
63000025	STEEL PLATE BEAM GUARD RAIL, ATTACHED TO STRUCTURES	FOOT	152
63100167	TRAFFIC BARRIER TERMINAL TYPE 1, SPECIAL (TANGENT)	EACH	4
63200310	GUARDRAIL REMOVAL	FOOT	302
67100100	MOBILIZATION	L SUM	1
70101700	TRAFFIC CONTROL & PROTECTION	L SUM	1
70300100	SHORT TERM PAVEMENT MARKING	FOOT	30
70301000	WORKZONE PAVEMENT MARKING REMOVAL	SQ FT	8
78000200	THERMOPLASTIC PAVEMENT MARKING - LINE 4"	FOOT	534
78200400	GUARDRAIL REFLECTORS	EACH	8
78201000	TERMINAL MARKER - DIRECT APPLIED	EACH	4
X0323330	PRECAST CONCRETE SUBSTRUCTURE	L SUM	1
X003551	THREE-SIDED PRECAST CONCRETE STRUCTURE - 36" SPAN	FOOT	60
X0013798	CONSTRUCTION LAYOUT	L SUM	1

* SPECIALTY ITEMS

SURVEY DATA

SITE CONTROL POINTS & BENCHMARKS (WINNEBAGO COUNTY HORIZONTAL AND VERTICAL CONTROL DATUM, US FT.)				
NO.	NORTHING	EASTING	ELEVATION	DESCRIPTION
A99	2107761.503	2534772.512	746.488	COUNTY MONUMENT WIN 21.1N-05.5W A
100	2106933.402	2534834.22	749.65	IR W/CAP
101	2106253.457	2534826.602	747.63	IR W/CAP
20	2106503.082	2534835.977		NAIL IN CL PAVEMENT
21	2107003.769	2534819.099		NAIL IN CL PAVEMENT
22	2107504.044	2534802.377		NAIL IN CL PAVEMENT
BM10			750.23	"CHISELED BOX" ON TOP OF CONCRETE HEADWALL +/-3' SOUTH OF NORTHEAST CORNER OF BRIDGE, OTTER CREEK OVER WHEELER RD.
BM11			745.76	RR SPIKE IN WEST FACE OF UTILITY POLE, +/-15' NORTH OF OTTER CK. BRIDGE AND +/-55' EAST OF CL WHEELER RD.

RECOVERY TIES

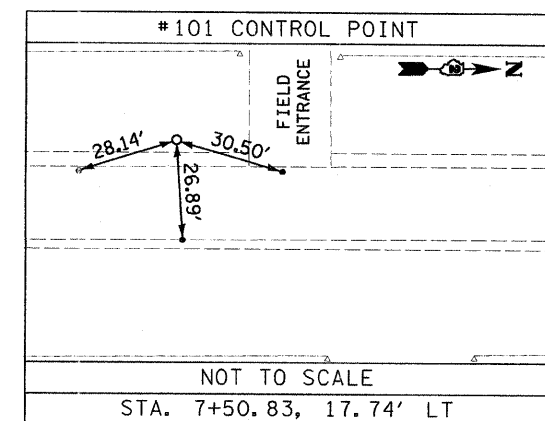
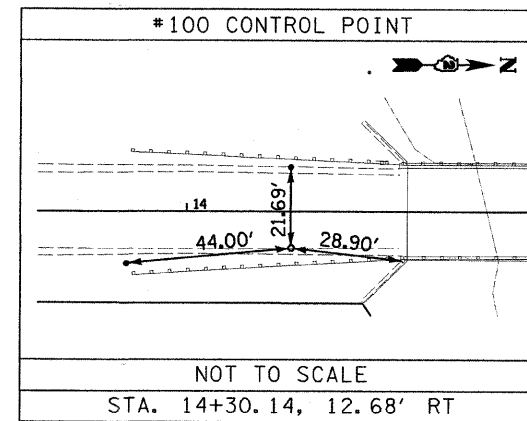


BITUMINOUS MIXTURE DESCRIPTION		
MIX USES	SURFACE COURSE	BINDER COURSE
PG	58-28	58-28
DESIGN AIR VOIDS(%)	3.0 AT N50	3.0 AT N50
MIXTURE COMPOSITION	IL 9.5L OR IL 9.5	IL 19.0
FRICTION AGGREGATE	C	N/A

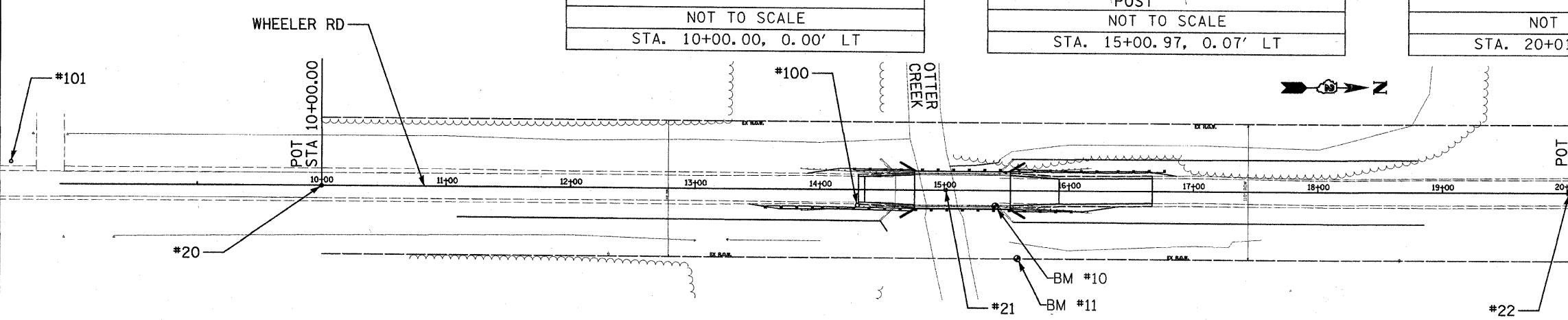
EARTHWORK SCHEDULE

STATION	EARTH EXCAVATION			EARTH EXCAVATION TO BE USED AS EMBANKMENT ADJUSTED FOR SHRINKAGE			EMBANKMENT			EARTHWORK BALANCE WASTE (+) OR SHORTAGE (-)
	END AREA	AVG OF END AREAS	TOTALS	END AREA	AVG OF END AREAS	TOTALS	END AREA	AVG OF END AREAS	TOTALS	
13+50.00	0.0	0.0	0.0	0.0	0.0	0.0	0.0	0.0	0.0	0.0
14+00.00	50.00	0.0	0.0	0.0	0.0	0.0	1.7	0.9	0.0	-0.8
14+48.00	48.00	27.3	13.7	24.3	20.6	27.2	14.5	25.7	-5.1	-0.5
14+50.00	2.00	28.8	27.1	2.0	1.7	31.8	29.5	2.2	-0.5	-31.6
14+80.00	10.66	0.0	13.4	5.3	4.5	151.0	91.4	36.1	-11.6	-46.4
14+88.30	5.64	0.0	0.0	0.0	0.0	293.3	222.3	46.4	-46.4	-42.9
14+77.10	7.80	0.0	0.0	0.0	0.0	3.6	148.5	42.9	-42.9	0.0
15+42.00	0.0	0.0	0.0	0.0	0.0	0.0	1.8	0.0	0.0	0.0
15+42.00	248.8	124.3	0.0	0.0	0.0	0.0	0.0	0.0	0.0	54.1
15+50.00	7.02	240.8	244.7	63.6	54.1	0.0	0.0	0.0	0.0	12.9
15+51.39	1.39	348.0	294.4	15.2	12.9	0.0	0.0	0.0	0.0	23.6
15+55.00	3.61	71.9	210.0	28.1	23.9	3.8	1.9	0.3	23.6	16.1
15+64.38	12.99	32.0	52.0	25.9	21.2	17.6	10.7	5.1	16.1	34.2
16+00.00	45.00	37.7	34.9	58.1	49.4	0.6	9.1	15.2	34.2	28.7
16+50.00	50.00	0.0	18.9	34.9	29.7	0.5	0.6	1.0	28.7	-0.5
17+00.00	50.00	0.0	0.0	0.0	0.0	0.0	0.3	0.5	-0.5	43
TOTALS:			257	218			176		43	

EXISTING HORIZONTAL CONTROL



PLOT DATE: 4/9/2008



COMMITMENTS:
THE ILLINOIS DEPARTMENT OF NATURAL RESOURCES HAS DETERMINED WETLANDS TO BE ADJACENT TO THE PROJECT LIMITS. THEY ARE LOCATED APPROXIMATELY 13 FEET FROM THE EDGE OF THE ROADWAY NORTH AND SOUTH OF OTTER CREEK. PERIMETER EROSION BARRIER WILL BE INSTALLED ON THIS LINE AND ALL WORK MUST BE PERFORMED INSIDE THESE LIMITS.

REVISIONS	
NAME	DATE

WINNEBAGO COUNTY HIGHWAY DEPARTMENT
WHEELER ROAD (CH 23)
SECTION 06-00414-00-BR
WINNEBAGO COUNTY
GENERAL NOTES
SUMMARY OF QUANTITIES
EARTHWORK SCHEDULE
ALIGNMENT & TIES
DRAWN BY: HLC