

**STATE OF ILLINOIS
DEPARTMENT OF TRANSPORTATION
PLANS FOR PROPOSED
LOCAL AGENCY IMPROVEMENT
FEDERAL-AID HBP PROJECT
HIGHWAY BRIDGE PROGRAM
FAS 60 (CEDARVILLE ROAD)
SECTION 07-00172-00-BR/ STEPHENSON COUNTY
PROJECT BRS-60(121)
JOB NO. C-92-012-08
CONTRACT NO. 85436
2008**

INDEX OF SHEETS

- 1 = COVER SHEET
- 2 = GENERAL NOTES & SCHEDULES
- 3 = SCHEDULES
- 4 = TYPICAL SECTIONS & ENTRANCE DETAILS
- 5-7 = PLAN AND PROFILE
- 8-9 = EROSION CONTROL PLAN
- 10 = GENERAL PLAN AND ELEVATION
- 11 = RIPRAP AND PILE LAYOUT
- 12 = TOP OF SLAB ELEVATIONS
- 13 = FRAMING PLAN
- 14 = SUPERSTRUCTURE
- 15 = DIAPHRAGM DETAILS
- 16 = WEST ABUTMENT
- 17 = PIER DETAILS
- 18 = EAST ABUTMENT
- 19-20 = PRESTRESSED BEAM DETAILS
- 21 = STEEL RAILING, TYPE SM
- 22 = BAR SPLICER ASSEMBLY DETAILS
- 23 = METAL SHELL PILE DETAILS
- 24-30 = ROADWAY CROSS SECTIONS
- 31 = CHANNEL CROSS SECTIONS

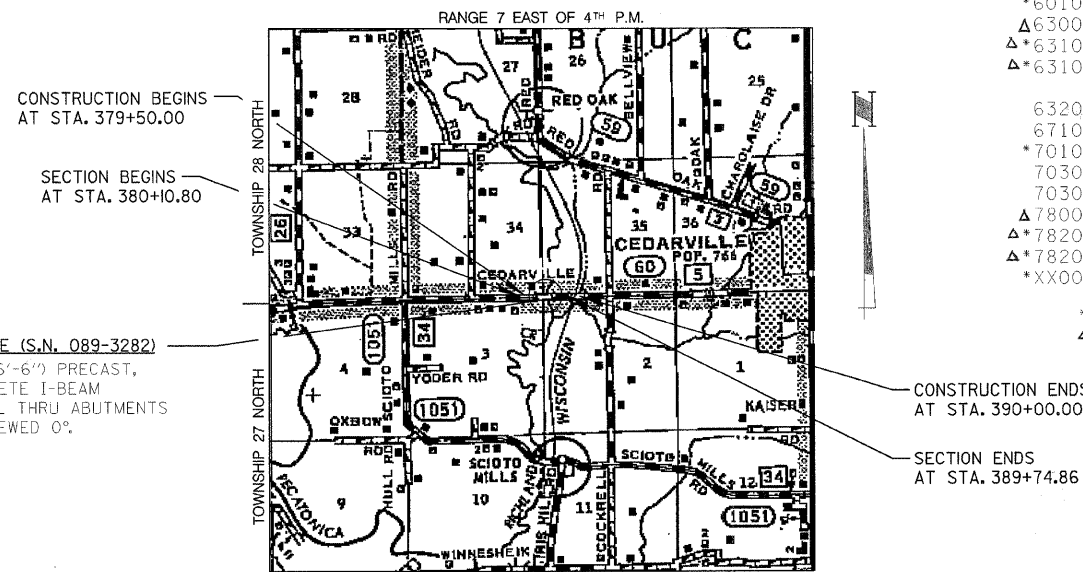
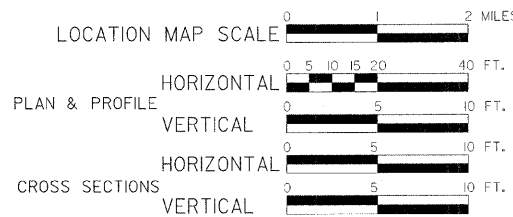
STANDARDS

- 000001-05 STANDARD SYMBOLS, ABBREVIATIONS AND PATTERNS
- 280001-04 TEMPORARY EROSION CONTROL SYSTEMS
- 420401-07 BRIDGE APPROACH PAVEMENT
- 515001-03 NAME PLATE FOR BRIDGES
- 542401-01 METAL END SECTION FOR PIPE CULVERTS
- 542406-01 METAL END SECTIONS FOR PIPE ARCHES
- 601101-01 CONCRETE HEADWALL FOR PIPE DRAIN
- 630001-08 STEEL PLATE BEAM GUARDRAIL
- 630301-05 SHOULDER WIDENING FOR GUARDRAIL TYPE I (SPECIAL) GUARDRAIL TERMINALS
- 631032-04 TRAFFIC BARRIER TERMINAL, TYPE 6A
- 635006-03 REFLECTOR AND TERMINAL MARKER PLACEMENT
- 635011-02 REFLECTOR MARKER AND MOUNTING DETAILS
- 701006-03 OFF-RD OPERATIONS, 2L, 2W, 4.5m (15') TO 600 mm (24") FROM PAVEMENT EDGE
- 701201-03 LANE CLOSURE, 2L, 2W, DAY ONLY, FOR SPEEDS >= 45 MPH
- 701301-03 LANE CLOSURE, 2L, 2W, SHORT TIME OPERATIONS
- 701311-03 LANE CLOSURE 2L, 2W MOVING OPERATIONS - DAY ONLY
- 701901-01 TRAFFIC CONTROL DEVICES
- 720011-01 METAL POSTS FOR SIGNS, MARKERS & DELINEATORS
- 728001-01 TELESCOPING STEEL SIGN SUPPORT
- 729001-01 APPLICATIONS OF TYPES A & B METAL POSTS (FOR SIGNS & MARKERS)
- 780001-02 TYPICAL PAVEMENT MARKING
- BLR-21-8 TYPICAL APPLICATION OF TRAFFIC CONTROL DEVICES FOR CONSTRUCTION ON RURAL LOCAL HIGHWAYS
- BLR-22-6 TYPICAL APPLICATION OF TRAFFIC CONTROL DEVICES FOR CONSTRUCTION ON RURAL LOCAL HIGHWAYS

SUMMARY OF QUANTITIES

PAY CODE	QUANTITY	UNIT	ITEM
20100110	662	Unit	Tree Removal (6 to 15 Units Diameter)
20100210	565	Unit	Tree Removal (Over 15 Units Diameter)
20200100	2,064	Cu. Yd.	Earth Excavation
20300100	1,844	Cu. Yd.	Channel Excavation
20400800	31	Cu. Yd.	Furnished Excavation
*20700400	122	Cu. Yd.	Porous Granular Embankment (Special)
*25001000	1.96	Acre	Seeding, Class 2 (Special)
25100630	9,488	Sq. Yd.	Erosion Control Blanket
28000300	11	Each	Temporary Ditch Checks
28000400	662	Foot	Perimeter Erosion Barrier
28100107	1,232	Sq. Yd.	Stone Riprap, Class A4
28200200	1,232	Sq. Yd.	Filter Fabric
*31101000	1,054	Ton	Sub-Base Granular Material, Type B
*35100100	495	Ton	Aggregate Base Course, Type A
40200800	90	Ton	Aggregate Surface Course, Type B
40603080	972	Ton	Hot-Mix Asphalt Binder Course, IL-19.0, N50
40603310	277	Ton	Hot-Mix Asphalt Surface Course, Mix "C", N50
40600100	795	Gallon	Bituminous Materials (Prime Coat)
42001165	200	Sq. Yd.	Bridge Approach Pavement
48101200	113	Ton	Aggregate Shoulders, Type B
50100100	1	Each	Removal of Existing Structures
50200100	103	Cu. Yd.	Structure Excavation
50300225	60.2	Cu. Yd.	Concrete Structures
50300255	179.4	Cu. Yd.	Concrete Superstructures
50300260	546	Sq. Yd.	Bridge Deck Grooving
50300300	585	Sq. Yd.	Protective Coat
50401005	867.5	Foot	Furnishing & Erecting PPC I-Beams, 48"
50800205	41,230	Pound	Reinforcement Bars, Epoxy Coated
50800515	62	Each	Bar Splicers
Δ50901050	351	Foot	Steel Railing, Type SM
51200958	464	Foot	Furnishing Metal Shell Piles 14" x 0.250"
51202305	464	Foot	Driving Piles
51203200	3	Each	Test Pile Metal Shells
51500100	1	Each	Name Plates
54200640	54	Foot	Pipe Culverts, Type 1, Corrugated Steel or Aluminum Culvert Pipe 15"
54205929	48	Foot	Pipe Culverts, Type 1, Corrugated Steel, Equivalent Round-Size 54"
54213870	2	Each	Steel End Sections 15"
54215169	2	Each	Steel End Sections, Equivalent Round-Size 54"
59100100	48	Sq. Yd.	Geocomposite Wall Drain
60100060	4	Each	Concrete Headwall for Pipe Drains
*60109580	134	Foot	Pipe Underdrains for Structures 4"
Δ63000000	462.5	Foot	Steel Plate Beam Guard Rail, Type A
Δ*63100087	4	Each	Traffic Barrier Terminal, Type 6A
Δ*63100167	4	Each	Traffic Barrier Terminal, Type 1, Special (Tangent)
63200310	178	Foot	Guardrail Removal
67100100	1	L. Sum	Mobilization
*70101700	1	L. Sum	Traffic Control & Protection
70300100	184	Foot	Short Term Pavement Marking
70301000	62	Sq. Ft.	Work Zone Pavement Marking Removal
Δ78001110	2,370	Foot	Paint Pavement Marking - Line 4"
Δ*78200410	41	Each	Guardrail Markers, Type A
Δ*78201000	4	Each	Terminal Marker - Direct Applied
*XX005970	1	L. Sum	Underwater Structure Excavation Protection

NET LENGTH 1,050 FT. = 0.199 MILES



LOCATION MAP

NAME AND ADDRESS OF UTILITIES	TYPE
MEDIACOM Attn: Darin W. Dean 3033 Asbury Road Dubuque, IA, 52001 (563) 584-0589	CABLE
COMED Attn: Mike Lenox 123 Energy Avenue Rockford, IL, 61109 (815) 490-2320	ELECTRIC
VERIZON NORTH, INC. Attn: Kolin Hinshaw 112 North Elm Sycamore, IL 60178 (615) 895-1515	TELEPHONE



Brian K. Converse
 DATE: MAY 27, 2008
 EXPIRES 11/30/09

* See Special Provisions
 Δ Specialty Items

STATE OF ILLINOIS DEPARTMENT OF TRANSPORTATION DIVISION OF HIGHWAYS	
APPROVED	6-4-08 2008 <i>Chris Z. Jeldt</i> STEPHENSON COUNTY ENGINEER
PASSED	July 10 2008 <i>John T. Johnson</i> DISTRICT 2 ENGINEER OF LOCAL ROADS & STREETS
RELEASING FOR BID BASED ON LIMITED REVIEW	July 10 2008 <i>Maura F. Puryear</i> DEPUTY DIRECTOR OF HIGHWAYS, REGION 2 ENGINEER

HIGHWAY CLASSIFICATION: MAJOR COLLECTOR (NON-URBAN)
 DESIGN SPEED: 50 MPH
 ADT = 1,950 (2028) 2% TRUCKS
 RURAL RECONSTRUCTION GUIDELINES
 CLOSED ROAD ADT = <50



Plans Prepared By:
WILLET, HOFMANN & ASSOCIATES, INC.
 CONSULTING ENGINEERS
 Land Surveying - Transportation - Structural
 Environmental - Architecture
 809 East Second Street, Dixon, Illinois 61021
 Phone: 815-294-3361 Fax: 815-294-3365
 Design Firm #184-00018
 www.willett-hofmann.com
 WHA # 1106D07